



**Yucheng Hongri Machinery Manufacture Co., Ltd.**

**禹城市红日机械制造有限公司**

山东省德州禹城市十里望工业园区

Wechat : 15165936190 Tel. : 0534-2123000 Fax. :0534-2123000  
 Website : [www.chinahongri.cn](http://www.chinahongri.cn) Email : [lyna@hongri-machinery.com](mailto:lyna@hongri-machinery.com)

## 单向圆盘犁 Disc Plough

单向圆盘犁系列产品主要适用于熟地或荒地的耕翻作业，特别适用于耕翻高产绿肥田及稻、麦茬的回田。犁的通过性能、入土性能良好，翻土、覆盖质量能满足农业生产技术要求，且有耕作阻力小，操作调整方便等优点。

The one-way disc plough is suitable for ploughing up the cultivated land as well as virgin land, especially on high yield's manure land, wheat and rice stubble fields. Good pass ability and penetration, complete inversion and coverage. Moreover, the plough has the merits of less working resistance and easy to operate and adjust, etc.

型号 Type	1LYQ-220	1LYQ-320	1LYQ-420	1LY-322	1LY-422	1LY-225	1LY-325	1LY-425	1LY-525	1LY-625
耕幅 Working width (mm)	400	600	800	660	880	500	750	1000	1250	1500
耕深 Working depth (mm)	180-200			200-220		250-300				
圆盘数量 No. of disc (pc)	2	3	4	3	4	2	3	4	5	6
圆盘直径 Dia. of disc (mm)	510	510	510	560	560	660	660/710	660/710	660/710	660/710
整机重量 Weight (kg)	160	180	200	210	260	290	410	470	530	750
挂接形式 Linkage	三点悬挂 Three point mounted					II类三点悬挂 Type II three point mounted				
配套马力 Matched power (hp)	18-20	25-30	35-50	35-40	40-45	35-50	55-65	65-80	100-110	110-120



红日农机



追求创新



结合实际



服务三农



型号 Type	1LYZ-325	1LYZ-425	1LYZ-525	1LYZ-625
耕幅 Working width (mm)	750	1000	1250	1500
耕深 Working depth (mm)	250-300			
圆盘数量 No. of disc (pc)	3	4	5	6
圆盘直径 Dia. of disc (mm)	660/710	660/710	660/710	660/710
整机重量 Weight (kg)	530	590	650	800
挂接形式 Linkage	II类三点悬挂 Type II three point mounted			
配套马力 Matched power (hp)	60-80	80-100	90-120	120-160



## 管子犁 Tube disc plough

圆盘犁与拖拉机全悬挂连接配套，作业时犁片旋转运动，对土壤进行耕翻作业，特别适用于杂草丛生，茎秆直立，土壤比阻较大，土壤中有砖石碎块等复杂农田的耕翻作业。具有不缠草，不阻塞、不壅土，能够切断作物茎秆和克服土壤的砖石碎块、工作效率高、作业质量好、调整方便、坚固耐用等特点。

The 1LYX disc plough is completely mounted with tractor. In the operation process, the disc is rotating to turn the soil. Particularly, it is suitable for operation on the field with grasses, straw and stems of crops or plants, big soil resistance and with many stones and break brickbat, etc. In the field, it is good at cutting grasses and straw, free from stopped by the grasses, soil or stones. etc. It is efficient in the work. It is of good quality during operation. It is easy to adjust and strong and durable.

型号 Type	1LYX-230	1LYX-330	1LYX-430	1LYX-530	1LYX-630
耕幅 Working width (mm)	600	900	1200	1500	1800
耕深 Working depth (mm)	250-300				
圆盘数 No. of disc (pc)	2	3	4	5	6
圆盘直径 Dia of disc (mm)	660/710				
整机重量 Weight (kg)	320	400	490	650	750
挂接形式 Linkage	三点悬挂 Three point mounted				
配套马力 Matched power (hp)	40-50	60-80	80-100	100-120	120-160



型号 Type	1LY-2	1LY-3	1LY-4	1LY-5
耕副 Working width (mm)	600	900	1200	1500
耕深 Working depth (mm)	250~300			
圆盘数量 No. of disc (pc)	2	3	4	5
圆盘直径 Dia. Of disc (mm)	660/710			
整机重量 Total weight (kg)	350	406	470	560
配套动力 Matched power (hp)	40	60	80	120
挂接形式 Linkage	II 类三点悬挂 Three-point suspension II type			



## 液压双向圆盘犁 Hydraulic Two way disc plough

双向圆盘犁系列产品主要适用于旱作区熟地生荒地的耕翻作业，不仅具有普通圆盘犁的操作性能，还具有地头空行程短、生产率高、省油等特点，特别适用于梯地和小块耕作区的作业。

Two-way disc plough products are mainly used for tillage on dry cultivated or fallow land. They not only have the function of ordinary disc plough, but also have the characteristics of short idle distance of travel on the edge of fields, high productivity, low oil consumption etc. They are also suitable for working on terraced fields and small piece of farming land.

型号 Type	1LY(SX)-325	1LY(SX)-425	1LY(SX)-525
耕幅 Working width (mm)	750	1000	1250
耕深 Working depth (mm)	250-300		
圆盘数 No. of disc (pc)	3	4	5
圆盘直径 Dia. of disc (mm)	660/710		
整机重量 Weight (kg)	650	750	850
挂接形式 Linkage	II类三点悬挂 Type II three point mounted		
配套马力 Matched power (hp)	65-80	80-100	100-120



红日农机



追求创新



结合实际

服务三农

## 水旱两用圆盘犁 Disc plough for dry & paddy field

这种农用拖拉机圆盘犁是专门为稻田设计的。这台机器也可以适合旱地耕作。当它在稻田里工作时，使土壤变得更细、更平整。小麦、水稻茬和黄芪等根茎作物被翻到，埋在地里;这样它们更容易腐烂，变成有机肥料，让土壤变肥沃。它还具有节约劳动、高效工作、低成本等优点。

This agricultural tractor disc plough for sale is designed specifically for paddy field. The machine can also fit for dry-land. When it works in paddy-field it turns up soil to make soil upturned, in lines and level. Wheat and rice stubble and Chinese milk vetch are turned down and buried in the field; they are easy to rotten and increasing the organic fertilizer of the filed. It also has advantages of saving labor, working efficiently and low cost etc.

型号 Type	1LY-524	1LY-624	1LY-724	1LY-824
耕副 Working width (mm)	1200	1440	1680	1920
耕深 Working depth (mm)	200-250			
犁片直径 Diameter of plow disc (mm)	610			
犁片数量 No. Of disc (pc)	5	6	7	8
整机重量 Weight (kg)	400	430	450	480
配套马力 Matched power (hp)	55-60	60-75	70-85	80-95
挂接方式 Linkage	Three-pointed mounted			



## 驱动圆盘犁 Drive disc plough

这种农用拖拉机圆盘犁是专门为稻田设计的。当它在稻田里工作时，使土壤变得更细、更平整。小麦、水稻茬和黄芪等根茎作物被翻到，埋在地里；这样它们更容易腐烂，变成有机肥料，让土壤变肥沃。它还具有节约劳动、高效工作、低成本等优点。

This agricultural tractor disc plow for sale is designed specifically for paddy field. When it works in paddy-field it turns up soil to make soil upturned, in lines and level. Wheat and rice stubble and Chinese milk vetch are turned down and buried in the field; they are easy to rotten and increasing the organic fertilizer of the filed. It also has advantages of saving labor, working efficiently and low cost etc.

型号Type	1LYQ-320	1LYQ-420	1LYQ-520	1LYQ-522	1LYQ-622	1LYQ-722	1LYQ-822
耕幅Working width (mm)	600	800	1000	1100	1320	1540	1760
犁片直径Dia.of disc (mm)	510	510	510	560	560	560	560
耕深Working depth (mm)	12-20						
输出轴转速Output speed (rpm/min)	540-740						
行进速度Working speed (km/h)	3-4						
重量 Weight(kg)	230	250	280	330	360	390	420
配套动力Matched power (hp)	20-30	25-30	25-35	35-45	40-55	55-65	65-75
架子形式 Frame type	圆梁Circular beam						
挂接方式 Linkage	三点悬挂传动轴连接 3-pointedmounted with PTO shaft						



型号Type	1LYQ-722	1LYQ-822	1LYQ-922	1LYQ-822	1LYQ-922	1LYQ-1022	1LYQ-825	1LYQ-925	1LYQ-1025
耕幅Working width (mm)	1540	1760	1980	1760	1980	2200	2000	2250	2500
犁片直径Dia.of disc (mm)	560	560	560	560	560	560	610	610	610
耕深Working depth (mm)	12-20			12-20			14-22		
输出轴转速Output speed (rpm/min)	540-740			540-740			540-740		
行进速度Working speed (km/h)	3-4			3-4			3-4		
重量 Weight(kg)	600	650	700	700	750	800	850	900	950
配套动力Matched power (hp)	80-100	80-100	90-120	90-120	100-120	100-120	110-150	110-150	110-150
架子形式 Frame type	方梁 square beam			方梁 square beam			重型方梁 heavy square beam		
变速箱形式 Gearbox type	单侧变速箱传动 single gearbox drive			双侧变速箱传动 double gearbox drive			双侧变速箱传动 double gearbox drive		
挂接方式 Linkage	三点悬挂传动轴连接 3-pointedmounted with PTO shaft								





## 圆盘耙（悬挂式轻型） Mounted Light-duty Disc Harrow

1BQX 系列悬挂轻耙主要适用于农田的耕后碎土、播前整地、疏松土壤、土肥混合和轻质土壤的灭茬作业。该机具有结构合理、坚固耐用、使用方便、保养易行、碎土能力强、耙后地表平整的特点。

This series are used for crushing clods after tillage, preparing soil before seeding, loosening the soil, combining the soil and fertilizer, and cleaning away stubble of plants in light soil field. With reasonable structure, strong ability to rake, durable, easy to use and maintain, etc.

型号 Model	1BQX-1.1	1BQX-1.3	1BQX-1.5	1BQX-1.7	1BQX-1.9	1BQX-2.2	1BQX-3.4
耕幅 Working Width (mm)	1100	1300	1500	1700	1900	2200	3400
耕深 Working depth (mm)	100-140						
耙片数量 No. of disc (pcs)	12	14	16	18	20	24	42
耙片直径 Diameter Of disc	460mm / 18inch						
重量 Weight (kg)	200	220	240	260	290	350	1100
挂接形式 Linkage	三点悬挂 Three-pointed mounted						牵引式 Trailed
配套动力 Matched power (hp)	12-15	15-18	25-30	30-35	35-40	55-60	80-100



## 圆盘耙（悬挂式对置轻型） Mounted Opposed Light-duty Disc Harrow

1BQDX 系列对置轻耙适用于耕后碎土、播前整地、疏松土壤、土肥混合和轻质土壤的灭茬作业。该机具有结构合理、坚固耐用、使用方便、保养易行、入土碎土能力好，耙后地表平整能满足精耕细作的农艺要求。

This series harrow used for crushing clods after tillage ,seedbed preparation , loosening the soil , mixing soil and fertilizer before saving , and cleaning away stubble of plants in light soil field .

With reasonable structure, strong ability to rake, durable, easy to use.

型号 Model	1BQDX-1.3	1BQDX-1.6	1BQDX-2.2	1BQDX-2.6	1BQDX-3.0	1BQDX-3.4
耕幅 Working width(mm)	1400	1800	2200	2600	3000	3400
耕深 Working depth(mm)	100-140					
耙片直径 Diameter of disc	460mm / 18inch					
耙片厚度 Thickness of disc(mm)	3					
耙片数量 No. Of disc(pcs)	16	20	24	28	32	36
重量 Weight(kg)	340	390	440	490	495	530
配套动力 Matched power(hp)	30-35	35-45	45-55	60-75	75-80	80-95
挂接形式 Linkage	Three-pointed mounted with tractor					



## 圆盘耙（悬挂式中型） Mounted Middle-duty Disc Harrow

1BJX 系列悬挂中耙适用于耕后碎土、播前整地、疏松土壤、土肥混合和轻中质土壤的灭茬作业。该机具有结构简单、坚固耐用、使用方便、保养易行、入土碎土能力好，耙后地表平整能满足精耕细作的农艺要求。

1BJX series hanging middle harrow : it is used for crushing clods after tillage ,seedbed preparation , loosening the soil , mixing soil and fertilizer before saving , and cleaning away stubble of plants in light soil field .With reasonable structure, strong ability to rake, durable, easy to use and maintenance ,etc.

型号 Model	1BJX-1.4	1BJX-1.6	1BJX-1.8	1BJX-2.0	1BJX-2.2	1BJX-2.4	1BJX-2.5
耕幅 Working width(mm)	1400	1600	1800	2000	2200	2400	2500
耕深 Working depth(mm)	140-160						
耙片直径 Diameter of disc	560mm / 22"						
耙片厚度 Thickness of disc(mm)	4						
耙片数量 No. Of disc(pcs)	12	14	16	18	20	22	24
重量 Weight	330	370	400	440	463	520	760
配套马力 Matched power	35-40	40-45	45	50	55-60	65	75
挂接方式 Linkage	Three-pointed mounted with tractor						



1BJ 系列液压折翼偏置中耙适用于粘重土壤的耕后碎土以及轻中质土壤的“以耙代耕”耕前灭茬。该机具有结构合理、作业效率高、入土碎土能力强、水平折翼、宽幅作业、窄幅运输等特点。

1BJ series folding wings in hydraulic pressure offset middle harrow : it is used for crushing clods after tillage in sticky heavy fields, the plough up, the scarification before seeding and cleaning away stubble of plants before tillage in the light soils , This harrow is featured by reasonable structure , high working efficiency ,strong capability into the soil and scarification , horizontal hinge, wide width task and narrow width transportation.

型号 Model	1BJ-2.0	1BJ-4.4	1BJ-4.8	1BJ-5.3	1BJ-6.0
耕幅 Working width(mm)	2000	4400	4800	5300	6000
耕深 Working depth(mm)	160-180				
耙片直径 Diameter of disc	560mm / 22”				
耙片厚度 Thickness of disc(mm)	4				
耙片数量 No. Of disc(pcs)	18	40	44	48	56
重量 Weight(kg)	860	1850	1950	2300	2600
配套马力 Matched power(hp)	45-65	75-100	100-120	140-150	140-160
挂接方式 Linkage	液压牵引 Hydraulic trailed with tractor				



## 圆盘耙（悬挂式对置中型） Mounted Opposed Middle-duty Disc Harrow

1BJDX 系列对置中耙适用于耕后碎土、播前整地、疏松土壤、土肥混合和轻中质土壤的灭茬作业。该机具有结构合理、坚固耐用、使用方便、保养易行、入土碎土能力好，耙后地表平整能满足精耕细作的农艺要求。

This series harrow used for crushing clods after tillage ,seedbed preparation , loosening the soil , mixing soil and fertilizer before saving , and cleaning away stubble of plants in light soil field .

With reasonable structure, strong ability to rake, durable, easy to use.

型号 Model	1BJDX-2.6	1BJDX-3.0	1BJDX-3.6	1BJDX-4.0
耕幅 Working width(mm)	2600	3000	3600	4000
耕深 Working depth(mm)	140-160			
耙片直径 Diameter of disc	560mm / 22inch			
耙片厚度 Thickness of disc(mm)	4			
耙片数量 No. Of disc(pcs)	24	28	32	36
重量 Weight(kg)	780	860	950	1050
配套动力 Matched power(hp)	55-60	60-75	75-85	80-90
挂接形式 Linkage	三点悬挂 Three-pointed mounted with tractor			



## 圆盘耙（液压牵引重型） Hydraulic trailed heavy-duty harrow

1BZ 系列液压偏置重耙具有作业效率高，入土能力强、耙后土壤松碎、对粘重土壤、荒地和杂草多的地块具有较强的适应能力。该耙采用焊接方形管为主体的整体式耙架、结构简单，钢性好，并装有液压起落的运输胶轮，转移方便，回转半径小，大大提高了耙的生产效率和使用寿命。

1BZ series hydraulic offset heavy duty disc harrow has the high working efficiency , strong capability into the soil, and after plough loosen soil. This harrow can highly adapt to the sticky heavy soil, uncultivated field and those plots of many weeds. It is made of square tubes welded together which ensures simple structure and good rigidity. The harrow is also equipped with hydraulic lifting rubber wheels for convenient transportation and small turning radius, thus the production efficiency and lifetime of the harrow is dramatically improved.

型号 Model	1BZ-1.8	1BZ-2.0	1BZ-2.2	1BZ-2.5	1BZ-3.0	1BZ-3.4	1BZ-3.8	1BZ-4.2	1BZ-5.3
耕幅 Working width(mm)	1800	2000	2200	2500	3000	3400	3800	4200	5300
耕深 Working depth(mm)	200-250								
耙片直径 Diameter of disc	660mm / 26inch								660mm / 26inch
耙片厚度 Thickness of disc (mm)	5								6
耙片数量 No. Of disc(pcs)	16	18	20	24	28	32	36	40	48
重量 Weight (kg)	1150	1250	1350	1500	1600	1800	2100	2300	3750
配套动力 Matched power (hp)	60-70	70-80	80-90	90-100	100-110	110-120	130-140	150-160	160-180
挂接方式 Linkage	液压牵引 Hydraulic trailed with tractor								



## 圆盘耙（对置液压牵引重型） Hydraulic trailed opposed heavy-duty harrow

1BZD 系列液压对置重耙适用于荒地、沼泽灌木地、粘重土壤及熟地耕前灭茬、耕后耙碎、疏松土壤，在熟地上可以代替犁进行首次作业，以耙代耕。

1BZD series hydraulic pressure heavy duty harrow are used for breaking up the soil and loosening of wasteland , shrub swamp ,heavy soil .It can rake the land instead of plough .

型号 Model	1BZD-2.6	1BZD-3.0	1BZD-3.3	1BZD-4.0	1BZD-4.4	1BZD-4.8	1BZDF-4.5
耕幅 Working width(mm)	2600	3000	3300	4000	4400	4800	4500
耕深 Working depth(mm)	200-250						250
耙片直径 Diameter of disc	660mm / 26inch						660mm / 26inch
耙片厚度 Thickness of disc (mm)	5						6mm
耙片数量 No. Of disc(pcs)	16	18	20	24	28	32	40
重量 Weight (kg)	1150	1250	1350	1500	1600	1800	3200
配套动力 Matched power (hp)	60-70	70-80	80-90	90-100	100-110	110-120	150-160
挂接方式 Linkage	液压牵引 Hydraulic trailed with tractor						液压牵引折翼 hydraulic trailed folding



## 联合整地机 Combined Land Preparation Machine

联合整地机能一次完成耕后碎土、疏松土壤、土肥混合、播前整平、镇压等作业，直接备好平坦苗床，可以提高效率，降低作业成本，而且，根茬粉碎还田以后，可以提高土壤有机质含量，改善土壤结构，起到培肥地力、提高粮食产量的作用。

Combined Land Preparation Machine can complete the pulverizer, soil transporting, soil mixing, leveling before sowing, repression, and can be directly prepared fl at seedbed, they can improve the efficacy, reduce the cost. After stubble ploughing, the organic soil quality contents rise, soil structure improves, the yield improves.

型号 Type	1ZL-3.0	1ZL-3.6	1ZL-4.5	1ZL-5.5
最大耕幅 Max. Working width (mm)	3000	3600	4500	5500
耕深 Working depth (mm)	80-140			
耙片数量 No. Of disc (pc)	32	40	48	60
耙片直径 Dia. of disc (mm)	460/510			
耙片间距 Disc spacing (mm)	170	170	170	170
重量 Weight (kg)	2350	2750	3200	3500
挂接形式 Linkage	牵引式 Trailed			
配套马力 Matched power (hp)	100-120	120-140	140-170	180-230





## 3Z 系列中耕机 3Z SERIES OF CULTIVATOR

3Z 系列中耕机可适用于玉米、大豆、棉花、薯类等作物的田间中耕作业，能够一次完成中耕、深松、开沟、起垄等农田作业，具有行距调整方便、深度控制灵活、起垄宽度调整便捷、适应范围广等特点。

3Z series of cultivator can be suitable for cultivating in the field of corn, soybean , cotton and sweet potato etc, and can also complete cultivator ,soil deep-loosening ,furrowing ,and ridging ,etc at the same. It has features on conveniently adjusted row spacing , flexible depth control ,simple and convenient ridging width adjustment ,wide applying range and so on.

型号 Models	单位 Unit	3Z-2	3Z-3	3Z-4
工作宽度 Working width	mm	1500	2900	3700
犁尖齿数 No. of plow tips	pcs	3	4	5
中耕行数 Cultivation rows	rows	3	4	5
起垄行数 Ridge rows	rows	2	3	4
适应垄距 Ridging rows	mm	450-600		
配套动力 Matched power	hp	20-30	35-45	45-55
整机重量 Total weight	kg	95	115	140
挂接方式 Linkage		三点悬挂 Three-pointed mounted linkage		



## 3ZS 系列中耕机 3ZS SERIES OF CULTIVATOR

该系列中耕机可以执行准备苗床、土壤通风、除草等多种田间作业。该机采用 S 型弹齿，具有弹性好、强度高、适应性强等特点。

This series cultivator can work to prepare seedbeds, soil ventilation, weeding and other farm work. It adopts S-type spring tine, with good elasticity, high strength, strong adaptability features and so on.

型号 Models	单位 Unit	3ZS-1.5	3ZS-1.8	3ZS-2.1
工作宽度 Working width	mm	1500	1800	2100
齿数 No. of S-tines	pcs	9	11	13
整机重量 Total weight	kg	120	140	170
挂接方式 Linkage		三点悬挂 Three-pointed mounted		



## 3ZT 系列弹簧中耕机 3ZT SERIES OF SPRING CULTIVATOR

3ZT 系列双弹簧中耕机是我公司根据国际市场的需求而研制开发的新型中耕机，该机采用双弹簧拉紧装置，当中耕机在工作过程中犁尖遇到障碍物时能自动弹起，越过后迅速恢复原来工作状态，从而起到保护犁尖的作用。该机具有行距调整方便、深度调整易行的特点。可适应于玉米、棉花、豆类的中耕松土作业。

The 3ZT series of spring cultivator is developed by our company according to the demand of foreign market.. This machine adopts double-spring tension device which enables the tines bounce automatically during operation when meet with obstacles and return to normal working quickly after over them ,by which the tines are protected .It has advantage of row spacing to be conveniently adjusted and the depth to be easily controlled. The machine is suitable for cultivating and loosening soil in the corn ,cotton ,and beans field.

型号 Models	单 位 Unit	3ZT-1.0	3ZT-1.4	3ZT-1.8	3ZT-2.2	3ZT-2.6	3ZT-3.0
工作宽度 Working width	mm	1000	1400	1800	2200	2600	3000
犁尖数量 No. of plowbody	pcs	5	7	9	11	13	15
工作深度 Working depth	mm	100-200					
整机重量 Total weight	kg	260	300	350	420	490	580
配套动力 Matched power	hp	25	30-40	40-50	50-70	70-90	80-100
挂接方式 Linkage		三点悬挂 Three-pointed mounted					



红日农机



追求创新



结合实际

服务三农

## 3ZY 系列中耕机 3ZY SERIES OF CULTIVATOR

该机可适用于玉米、棉花、豆类、番薯类等作物的田间中耕、深松、除草、起垄作业。具有行距可调，深松、起垄更换方便的特点。

It can be used to cultivate, subsoil, weed, ridge in the field of corn, cotton, beans, potato and so on. It has the advantages of adjustable row spacing, conveniently changeable between deep loosening and ridging.

型号 Model	Unit 单位	3ZY-1.2	3ZY-2.0	3ZY-2.8
耕幅 Working width	mm	1200	2000	2800
犁腿数 No. of legs		2	3	4
耕深 Working depth	mm	100-240		
行距 Row spacing	mm	500-800		
重量 Total weight	kg	150	210	290
配套动力 Matched power	hp	25	40	50-60
挂接方式		三点悬挂 Three-pointed mounted		



## 3S 系列深耕机 3S SERIES OF SUBSOILER

3S 系列深耕机主要适用于薯类、豆类、棉花的田间深耕作业，具有破除地表土壤板结、疏松土壤、保持地下水分、灭茬的作用。具有深度可调、适应范围广、挂接方便等特点。

3S series of subsoiler is mainly suitable for subsoiling in the field of potato ,beans ,cotton and can break surface soil harden, loosen soil, retain water underground ,and clean stubble. It has advantages of adjustable depth ,wide range of applying ,convenient suspension and so on.

型号 Model	单 位 Unit	3S-1.0	3S-1.4	3S-1.8	3S-2.1	3S-2.6
工作宽度 Working width	mm	1000	1400	1800	2100	2600
犁体数量 No. of plowbody	pcs	5	7	9	11	13
工作深度 Working depth	mm	100-240				
整机重量 Total weight	kg	240	280	320	370	450
配套动力 Matched power	hp	25-30	30-40	50-60	70-80	80-90
挂接方式 Linkage		三点悬挂 Three-pointed mounted				



## 1LS 系列直面铲深松机

型号 Model	单 位 Unit	1LS-5	1LS-7	1LSX-5	1LSX-7
工作宽度 Working width	mm	2200	3200	2200	3200
矩形管尺寸 Size of frame	mm	120*80*8		140*140*8	
腿子高度 Height of leg	mm	740		840	
犁体数量 No. of plowbody	pcs	5	7	5	7
工作深度 Working depth	mm	300-400		350-500	
整机重量 Total weight	kg	580	700	650	880
配套动力 Matched power	hp	90-120	120-150	100-140	120-180
挂接方式 Linkage		三点悬挂 Three-pointed mounted			



## 1XPJ 系列深松整地机 DEEP LOOSEN MACHINE

该机一次作业可以完成深松、碎土、起垄、镇压作业，与传统分段作业相比，具有一次完成整地全过程、深松打破犁底层、深松后土壤松软、碎土效果好、行成的垄形好且耕后不散墒，保水保墒性好等特点。

The machine once completed homework can deep loosening, broken soil, ridging and repression, compared with the traditional segmentation operation, has a complete, deep loosening break the plough the soil preparation process, deep loosening soil loose, break soil effect is good, good ridge shape and form on the farm after do not come loose quantity, good water keep moisture.

型号 Model	单位 Unit	1XPJ-2.5
工作宽度 Working width	mm	2500
犁体数量 No. of plowbody	pcs	9
工作深度 Working depth	mm	300-400
整机重量 Total weight	kg	1350
配套动力 Matched power	hp	100-120
挂接方式 Linkage		三点悬挂 3-pointed mounted
镇压轮/碎土辊		可定制



## 箱式平地机 Box scraper

箱式平地机是一种利用刮刀平整地面的土方机械。刮刀装在机械前后轮轴之间，能升降、倾斜、回转和外伸。动作灵活正确，操纵方便，平整场地有较高的精度，适用于构筑路基和路面、修筑边坡、开挖边沟、也可搅拌路面混合料、扫除积雪、推送散粒物料以及进行土路和碎石路的养护工作。Use scraper fitted between front back rear wheels to unknot land,can lift,slope,revolve and extend.Flexible and accurate,easy to use.This series are used for construction of roadbed and road surface,side ditch,mixing road mixtures,removing snow,transporting grain materials,maintenance of dirt roads and gravel roads,etc.

型号 Model	单位 Unit	SBX-4	SBX-5	SBX-6	SBX-7	SBX-8	SBX-9	SBX-10
耕幅 working width	mm	1220	1530	1830	2135	2440	2800	3150
耕刀数量 No.of blade	pcs	4	5	6	7	8	9	10
箱刀深度 Box knife depth	mm	547						
配套动力 matched power	hp	18-25	20-25	25-40	35-50	45-60	50-75	60-90
重量 weight	kg	170	210	250	300	350		





## 平地机 Land scraper

HRGB 系列平地机适用于构筑路基和路面，修筑边坡，开挖边沟，也可搅拌路面混合料，扫除积雪，推送散粒物料以及进行土路和碎石路的养护工作。

Grader is suitable for the construction, the road bed and slop, digging ditches, also can mix pavement hybrid, cleaning snow, transporting the grain materials, as well as the dirt and gravel road maintenance.

型号 Model	单位 Unit	HRGB-4	HRGB-5	HRGB-6	HRGB-7	HRGB-8
耕幅 working width	mm	1200	1500	1800	2100	2400
箱刀深度 overall depth	mm	550				
配套动力 matched power	hp	20	25	30	40	50
重量 weight	kg	85	95	105	125	145
挂接形式 linkage		三点悬挂 three-point mounted				



## 可调式起垄机 Adjustable Ridger

3Z 系列可调式起垄机主要用于农田更厚起垄作业。该机采用方管焊接整体式刚性机械加为主，配以角度调试圆盘起垄器。圆盘犁片采用优质 65Mn 钢板，经热处理加工制成。该机具有结构合理，坚固耐用，运输方便，便于调整，使用维修方便等特点。

3Z adjustable ridger is mainly used for making ridge in the field after tillage. The main frame is made of rectangular tube welded together, assembled with the angle adjustable disc ridging unit. The discs are made of qualified 65Mn steel plate with heat treatment. The machine is steady and durable, convenient for transport and easy to adjust, operate and maintenance.

型号 Model	单位 Unit	3Z -80	3Z -120	3Z-140	3Z-160	3Z-180	3Z-260
耕幅 Working width	mm	800	1200	1400	1600	1800	2600
起垄宽度 Ridger width	mm	200-450	200-450	200-450	300-500	300-50	300-500
起垄高度 Ridger height	mm	150-240	150-240	150-300	150-300	150-300	150-300
配套动力 Matched power	hp	20	25-30	30-40	50	50-70	70-90
整机重量 Total weight	kg	135	150	165	180	200	350
挂接形式 Linkage		三点悬挂 Three-pointed mounted					



## 3QL 系列起垄犁 3QL series ditching ridger

它主要适用于土豆，豌豆，蔬菜等农作物的田间中耕，深松，除草，起垄作业。具有行距可调，深松，起垄等更换方便等特点。

It is mainly used for riding in the field of potato ,beans ,vegetables after tillage, It has the advantages of convenient adjustment in riding spacing ,riding height ,riding rows and angle,wide range of matched tractors ,good ability of adaption and so on .

型号 Models	单位 unit	3QL-1	3QL-2	3QL-3	3QL -4
犁头个数 No.of plow body	Pcs	2	3	4	5
工作宽度 Working width	mm	500	1200	2000	2800
工作深度 Working depth	mm	100-240			
行距 Row spacing	mm	500-800	500-800	500-800	500-800
整机重量 Total weight	kg	110	150	210	290
配套动力 Matched power	Hp	20	25	40	50-60
挂接方式 Linkage		三点悬挂 3-pointed mounted with tractor			



## 2BYSF 系列精密玉米施肥播种机 PRECISION CORN FERTILIZATION SEEDER

该系列精密玉米施肥播种机是为 15-100 马力拖拉机配套种植机械，适用于平原和丘陵地区的小麦播种。具有通用性能好，适用范围广，播种均匀等特点。

This series of corn fertilization seeder can be mounted with 15-100hp tractors. It is applicable to the plains and hilly areas of maize seed and fertilizer. It has advantages of favorable universality, wide range of applying, even seeding and so on.

型号 Model	单位 Unit	2BYSF-2	2BYSF-3	2BYSF-4	2BYSF-5	2BYSF-6
整机尺寸 Overall dimension	Mm	1440*1150*980	1440*1500*980	1440*1950*980	1440*2250*980	1440*2600*980
行数 Rows	Row	2	3	4	5	6
行距 Row spacing	Mm	428-630	428-600	428-570	428-540	428-510
株距 Plant spacing	Mm	140/173/226/280				
开沟深度 Ditching depth	Mm	60-80				
施肥深度 Fertilization depth	Mm	60-80				
播种深度 Sowing depth	Mm	30-50				
化肥箱容积 Capacity of fertilizer tank	L	42	68	86	86	86
种箱容积 Capacity of seed box	L	8.5*2	8.5*3	8.5*4	8.5*5	8.5*6
重量 Weight	Kg	140	190	270	300	350
挂接形式 Linkage		三点悬挂 Three-pointed mounted				
配套动力 Matched power	hp	12-18	15-25	25-40	40-50	50-60



红日农机



追求创新



结合实际



服务三农

## 2BFX 系列小麦施肥播种机 2BFX SERIES WHEAT FERTILIZER SEEDER

该系列小麦播种机是为 15-100 马力拖拉机配套种植机械，适用于平原和丘陵地区的小麦播种。具有通用性能好，适用范围广，播种均匀等特点。  
This series of wheat fertilization seeder can be mounted with 15-100hp tractor. It is applicable to the plains and hilly areas of wheat seed and fertilizer. It has advantages of favourable universality, wide range of applying, even seeding and so on.

型号 Models	单位 Unit	2BFX-9	2BFX-12	2BFX-14	2BFX-16	2BFX-18	2BFX-24
配套动力 Matched power	Hp	15-18	15-30	18-30	50	60-80	70-100
净重 Net weight	Kg	220	285	310	650	680	1080
播种耕幅 Seeding width	Mm	1350	1800	2100	2400	2700	3600
播种行数 Seeding rows	Row	9	12	14	16	18	24
基本行距 Row spacing	Mm	150	150	150	150	150	150
播种深度 Seeding depth	mm	40-80					
挂接方式 Linkage		三点悬挂 Three-pointed mounted					



## 2CM 系列马铃薯种植机 Potato planter

2CM 型马铃薯种植机系引进国外生产马铃薯机械的先进技术,同四轮拖拉机配套,集开沟、施肥、播种、覆土、震压为一体,可一次完成施肥、播种作业。

The 2cm series potato planter ,introducing the advanced technology for producing potato planter aboard ,match the 20-90hp four-wheel tractor and combine ditch,manuring ,sowing,casing soil together,it can complete manung and sowing aimultaneously.

型号 Models	单位 Unit	2CM-1	2CM-2	2CM-2A	2CM-4	2CMF-1	2CMF-2	2CMF-2A
重量 Total weight	Kg	180	200	350	560	195	220kg	440kg
垄距 Ridger spacing	Cm	单垄	50-85	50-100	50-80	单垄 single ridger	单垄 single ridger	双垄 50-85cm
行数 No. Of row	pcs	单行	双行	四行	四行	单行	双行	四行
株距 Planting distance	Cm	18-35, 可调 Adjustable						
工作效率 Working efficiency	m <sup>2</sup> /h	0.4-0.6		0.6-1	0.8-1.2	0.5-0.7	0.5-0.7	0.8-1.1
种箱容量 Seed tank capacity	m <sup>3</sup>	0.24*1	0.24*2	0.24*2	0.24*4	0.24*1	0.24*2	0.24*2
肥箱容量 Manure tank capacity	m <sup>3</sup>	0.08*1		0.08*2	0.08*2	0.08*1	0.08*2	0.08*2
配套动力 Matched power	hp	20-35	20-35	50-90	80-100	20-35	22-35	35-70
挂接方式 Linkage		三点悬挂 3-pointed mounted						
备注 Remark						喷药,覆膜; 覆膜宽度: 90-100cm	覆膜,喷药,旋耕 机起垄,需要传动 轴带动,覆膜宽 度: 100-120cm	可以覆膜,可以喷 药,覆膜宽度: 100-120cm



## 4U 系列马铃薯收获机 4U series potato harvest

该产品性能好、效率高。主要适用于收获土豆、大蒜、地瓜、花生等地下根茎农作物。具有收获效率高、破损低、运转轻快无振动、不堵草、漏土快、结构简洁、使用寿命长等特点。

This product is mainly used for harvesting potato ,garlic ,sweet potato ,peanut and other underground rhizome crops .It has the high harvest efficiency,the low breakage rate,the revolution vividly does not have the vibration ,It never stops up by the grass ,leaks the soil quickly .The structure is simple and the service life is longer .

型号 Model	4U-1	4U-1A	4UZ-1	4U-2	4U-2B	4U-3
行数 Row number	单行 Single row(casting)	单行 Single row(casting)	单行 Single row(casting)	双行 Double row(Casting)	双行集堆 Double row(Self-loading)	联合自装车 Double row(Self-loading)
行距 (cm)	55-80	50-60	55-80	55-80	55-80	55-80
生产率(mu/hr)Productivity(mu/hr)	1-3	3-5		5-8		8-15
重量(kg)Total weight(Kg)	180	100	160	700	800	1200
配套动力(hp)Matching power(HP)	22-35	8-15	22-35	50-80	50-80	70-120
工作深度(cm)Working depth(cm)	25	20	25	25	25	25
工作宽度(m)Working width(m)	0.65	0.60	0.60	1.65	1.65	1.65
明薯率(%)Potato-exposing rate(%)	≥96					
破皮率(%)Breakage rate(%)	≤2					
动力输出轴转速(rpm)REV of power take-off shaft(RPM)	560/1250	1000	560/1250	560	560	560
外形尺寸(cm)Overall dimension(cm)	180*100*98	90*70*70	120*100*75	230*220*100	280*220*100	330*390*310
包装尺寸(cm)Packing dimension(cm)	165*85*45	85*70*65	150*90*70	220*190*45	220*190*45	260*220*100



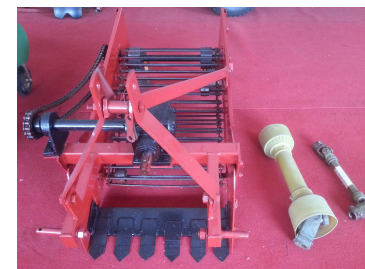
红日农机



追求创新



结合实际



服务三农

## 撒播机 Spreader

撒播机是用来进行高质量、大面积、高效播种作业的设备，主要用于农田耕前撒播底肥、耕后播种及草场、牧场的种肥混合撒播、雪后融雪剂的撒播等作业。该机配套 12-100HP 四轮拖拉机后置悬挂使用。适用与农、林、牧区平坦耕地、草场、坡地、丘陵等不同条件的地区播种与施肥。该机具有机动性好，结构简单、操作方便、撒播均匀、使用可靠等特点。

This type seeding machine is used for high quality, large area, high efficient planting operation of equipment, mainly used for farmland tillage seeding also recommended before, till after farming and pasture, pasture seed manure mixed seeding, snowmelt agent after seeding and other assignments. It is equipped with 12-100hp four-wheel tractor rear suspension. It is suitable for planting and fertilizing in areas with different conditions such as agricultural, forestry, grazing land, grassland, slope and hilly. This machine has the characteristics of good maneuverability, simple structure, easy operation, uniform seeding and reliability.

型号 Model	单位 unit	CDR-250	CDR-400	CDR-600	CDR-1000	CDR-1200	CDR-1400
工作幅宽 Working width	m	5-6		6-8	8-12	10-16	10-16
肥箱容积 Capacity of fertilizer box	L	250	400	600	1000	1200	1400
肥箱装肥重量 Weight of fertilizer box	Kg	100-150	150-190	160-200	400-500	500-600	600-700
PTO 转速 PTO Rotation speed	r/min	540					
PTO 花键 PTO spline		六键 6 spline/八键 8 spline					
整机重量 Total weight	kg	65	80	90	95	105	110
配套动力 Matched power	hp	18-30	30-40	35-90	35-90	35-90	35-90
挂接方式 Linkage		三点悬挂 Three-point suspension					



型号 Model	单位 unit	2FX-700	2FX-800	2FX-1000	2FX-1500
工作幅宽 Working width	m	20-28			

红日农机

追求创新

结合实际

服务三农



肥箱容积 Capacity of fertilizer box	L	600	700	1000	1500
肥箱装肥重量 Weight of fertilizer box	Kg	700	800	500-750	750
肥箱材质 Material of box		不锈钢 Stainless steel		铁板 Q235 steel	
PTO 转速 PTO Rotation speed	r/min	540			
PTO 花键 PTO spline		六键 6 spline/八键 8 spline			
整机重量 Total weight	kg	120	130	300	360
配套动力 Matched power	hp	35-60	40-65	55-90	60-100
挂接方式 Linkage		三点悬挂 Three-point suspension			



型号 Model	单位 unit	ATV-260	ATV-400	ATV-600
工作幅宽 Working width	m	6-8		
肥箱容积 Capacity of fertilizer box	L	260	400	600
肥箱装肥重量 Weight of fertilizer box	Kg	50-100	100-150	150-200
肥箱材质 Material of box		普通铁板 Q235 Steel		
整机重量 Total weight	kg	85	95	110
配套动力 Matched power	hp	15-18	15-20	18-25
挂接方式 Linkage		ATV 车球头牵引连接 Trailed with ATV car		



## DFC 系列撒肥车 DFC series of fertilizer spreader

DFC 系列牵引式多功能撒播机，是由框架，行走轮，料箱，传动装置所构成。肥料，沙土或盐通过料箱底部的传动装置被输送到固定在尾部的螺旋设备上，物料落在撒播盘然后通过旋转撒播出去，螺旋设备和撒播设备通过万向接头与拖拉机相连接。本实用新型设备可直接连接到各种拖拉机上，分散均匀，省力，大大减轻劳动强度。

DFC series traction type multifunctional spreader, it is composed by the frame, walking wheel, container, transmission components. Fertilizer, sand or salt by the container at the bottom of the transmission device to hold the tail propeller on a chip, fall on the blades, rotating scattering, propeller and scattering machine connected to the front by the universal connector. The utility model can be directly connected to the various types of tractor, dispersed evenly, can save labor and greatly reduce the labor intensity.

型号 Model	单位 UNIT	DFC-2500	DFC-5500	DFC-12000
长度 Overall size (L)	mm	3600	4120	6250
宽度 Overall size (W)	mm	1750	1870	2250
高度 Overall size (H)	mm	1650	1750	2370
容积 Loading capacity	m <sup>3</sup>	1.4	2.3	7
载重 Loading weight	Kg	2500	5500	12000
自重 Total weight	Kg	1000	1300	2500
播幅 Spreading width	m	7-14	7-16	7-25
轮胎型号 Standard tires		750*16	750*16	125/80*18
配套动力 Tractor HP required	HP	60-65	70-80	≥100



红日农机

追求创新



结合实际

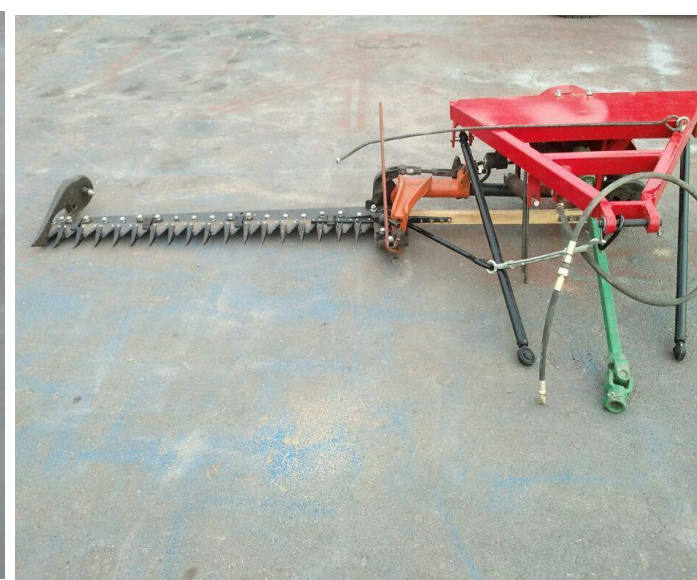
服务三农

## 9GB 往复式割草机 reciprocating mower

9GB-1.4/1.6/1.8/2.1 型悬挂往复式割草机配套 12-35 马力四轮拖拉机使用，该机利用偏置式曲柄连杆机构，驱动割刀进行作业，适用于农/牧区平坦草场和山地、丘陵地草场，用于收割天然和种植牧草、紫花苜蓿、芦苇、青储饲料等。拖拉机动力输出轴驱动割刀，三点悬挂控制机具的起落，操纵拖拉机动力输出机构实现个刀的运动或停止。提升机构分油缸和提升架结构两种形式。该机性能好，遇有障碍物时可通过拖拉机的液压装置提升割刀。该机具具有结构简单、操作方便、割刀切割有力、割茬低且整齐、使用可靠等特点。

Model 9GB-1.4/1.6/1.8/1.9/2.1 mower of matches with four wheeled tractor range from 12~35 hp It is suitable to be used in agricultural and pasturing area to cut the grass. It can be matched with PTO of tractors with good performance, easy pass, easy operation, strong cutting and so on.

型号 Model	单位 Unit	9GB-1.4	9GB-1.6	9GB-1.8	9GB-2.1
悬挂方式 Linkage		三点悬挂 three-point mounted			
配套动力 Matched power	hp	12-35			
割幅 Cutting width	m	1.4	1.6	1.8	2.1
割茬高度 Cutting height	mm	60-80			
生产效率 Working efficiency	Ha/h	1.1	1.2	1.3	1.4
整机质量 weight	kg	180	195	210	230

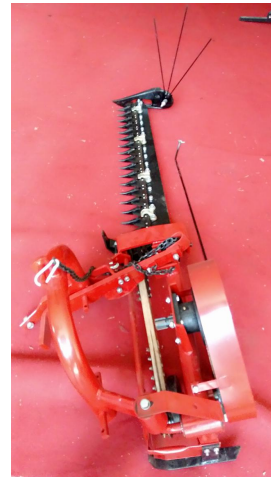


## 9GB 往复式割草机 reciprocating mower

9GB 型（圆管）往复式割草机可用于农林牧区在丘陵、坡地、小面积等不同条件下收割天然牧草或种植牧草作业的需求。机具由拖拉机手一人操作，有较好的使用性，越障时可依靠拖拉机液压系统将割草机整机提起。

9GBseries reciprocating mower is used for reaping the grass at the farm,forest or as ture land.It works at the hill,sloping field or small field.It controls by the tractor driver and it has the good working performance,the whole mower can be lifted by hydraulic pressure system when the tractor crosses the barrier.

型号 Model	单位 Unit	9GB-1.4	9GB-1.6	9GB-1.8	9GB-2.1
割幅 Cutting width	mm	1400	1600	1800	2100
割茬高度 Cutting height	mm	600-800			
重量 weight	kg	125	130	135	145
挂接方式 Linkage		三点悬挂 Standard Three point mounted			
配套动力 Matched power	hp	18-20	18-25	20-25	20-35



## 9G 系列甩刀割草机

9G-1.0、9G-1.5、9G-1.8、9G-2.1 型割草机，主要适用于草地、灌木林地的割草作业、清理，以及地表不平整牧场的更新、改造等作业，机具机构合理、坚固耐用，适用方便，保养易行，割茬高低可调，作业性能良好，是较理想的割草、清理牧场的农业机械。

Model 9G-1.0、9G-1.5、9G-1.8、9G-2.1 rotary slasher are suitable for cleaning and slashing in bush and grassland, As well as improving uneven ranch.

The machine is scientific in design, durable in service, easy to operate and maintain, adjustable in cutting height and has excellent working performance, they are more ideal agricultural machines for grass slashing and ranch cleaning.

型号 Model		9G-1.0	9G-1.5	9G-1.8	9G-2.1
外型尺寸 Overall Dimensions	长 Length (mm)	2570	2850	3160	3460
	宽 Width (mm)	1400	1660	1960	2260
	高 Height (mm)	1100	1100	1100	1100
重量 Weight (kg)		253	335	442	620
割幅 Cutting Width (mm)		1000	1500	1800	2100
割茬高度 Cutting Height (mm) (可调)		≤50	≤50	≤50	≤50
配套动力 Fitted Power (HP)		18-20	25-50	45-65	80-120
挂接方式 Manner Of Linkage		三点半式悬挂 Three Point Semi mounted			



## 搂草机 hay rake

9L 系列搂草机适用于装配小型四轮拖拉机，并用于收集收割后的牧草。此机具采用液压转向，弹簧钢弹尺及其他部件。工作的同时，液压转向机构能够立即让耙尺整体入土并卸载牧草。

9L series of hay rake is equipped with the small four wheel tractors and the machine is used for collecting grass after cutting. The machine adopts hydraulic turning, the spring steel tines and other components. During the time of work, the hydraulic turning mechanism can make the tine turn whole and unload the pasture grass immediately.

型号 Model	单位 Unit	9L-1.4	9L-1.6	9L-1.8	9L-2.1
搂幅 raking width	mm	1400	1600	1800	2100
配套动力 matched power	hp	18-20	20-25	25	25-30
工作效率 productivity	Ha/h	15-20			
重量 weight	kg	110	140	150	160
挂接方式 Linkage		三点悬挂 Three-pointed mounted			



## 9GBL 系列割草机 9GBL series of cutting and raking machine

9GBL 系列割草机利用偏置式曲柄连杆机构驱动割刀进行割草作业的同时搂草机构将草搂集在一起。主要是用于农牧区草场，山地、丘陵草场的天然牧草和种植牧草的收割及收集作业。

The structure of the lawn mower is simple; they can save physical labor and be of high efficiency. They are fit to gather up the herbage of mature grazing grounds.

The series of mower takes the advantage of the offset crank link mechanism to drive the cutter blade to the mow grass, and it is adequate for cutting the natural and planted grasses in ranch, mountain and hilly area.

The structure of the machine is compact, the operation is easy and reliable and the residues is low after cutting. Widely, durability and easy maintenance make the series sell well.

型号 Model	单位 Unit	9GBL-1.4	9GBL-1.6	9GBL-1.8	9GBL-2.1
割幅 cutting width	m	1.4	1.6	1.8	2.1
搂草宽度 raking width	m	1.4	1.6	1.8	2.1
割茬高度 stubble height	cm	5-6			
重量 weight	kg	360	380	400	420
配套动力 matched power	hp	18	20	25	30
挂接形式 linkage		牵引 trailed			



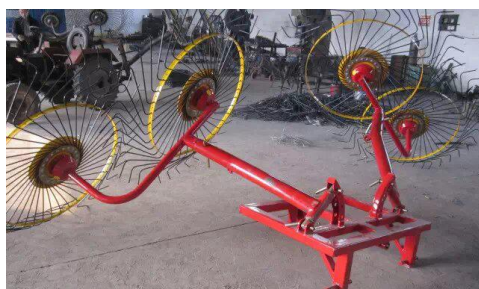


## 指盘搂草机 Finger wheel rake

9LZ 系列搂草机，采用了传统的双面结构设计，是一款性价比很高的机型，运输折叠十分轻便简单，非常适合小型草场作业。草条宽度调节简单迅速，完美适应打捆宽度。坚固的悬挂机架，可满足更多的配套马力，通过加密搂齿可以搂集稀松的牧草，残余的作用秸秆，以及土壤中的残膜。

Finger plate machine series, suitable for hanging in the three wheeled tractor suspension device, working parts with tine refers to disc machine on the disk, sequentially to a finger, until the formation of loose ventilation grass strip. Change refers to disc to adjust the angle of SWATH width. Tooth for tooth comb grass of spring steel, the effect is good, copying performance is strong, tooth form a radial configuration on the hub, which can eliminate the wind effect, convenient dust by. Finger pressure on the ground by a tension spring control, according to crop and ground conditions, adjust the pressure by stretching the adjustment plate. Transport can be a wheel to the rear part of the tractor. The machine has the advantages of simple structure, convenient operation, reliable operation, less failure, high efficiency, good operation quality. Simple maintenance, power good matching performance. And not only can rake, and can carry out the tedding operation (can be integrated a grass strip around to spread out). This machine and the machine supporting the use of my factory production, the cutting width is formed of three grass strip around into a homogeneous grass strip, facilitate the subsequent bundling operation.

型号 Model	单位 Unit	9LZ-3.0	9LZ-4.0	9LZ-4.8
工作宽度 working width	mm	3000	4000	4800
重量 weight	kg	260	380	450
配套动力 matched power	hp	20	30	40
盘子数量 No.of wheel	pcs	4	6	8
草条宽度 swath width	mm	800-1500		
运输状态机具宽度 overall width in transport position	mm	3200		
运输状态机具高度 overall height in transport position	mm	2300	3000	3800
机组工作速度 working speed	Km/h	5-15	10-15	10-15
生产率 productivity	Hm <sup>2</sup> /h	1-3	2-5	4-6
挂接方式		三点悬挂 3-pointed mounted		



红日农机



追求创新

结合实际

服务三农

## 铧式犁 Furrow plough

本系列铧犁为全悬挂式铧式犁，适用于土壤、沙壤土地区熟地旱田耕作。它具有结构简单，耕作适应范围大，作业质量好，地表平整，碎土性能好，墒沟小等特点。

This series is fully suspended plow plow for soil, sandy loam area foxglove upland farming. It has a simple structure, large farming adaptation range, good quality work, smooth surface, good pulverizer performance, Ditches and other small features.

型号 Type	IL-220	IL-320	IL-420	IL-520	IL-620	IL-225	IL-325	IL-425	IL-525	IL-625	IL-725
单犁体耕幅 Single ploughbody working width (mm)	200					250					
最大耕幅 Max. working width (mm)	400	600	800	1000	1200	500	750	1000	1250	1500	1750
耕深 Working depth	18-25										
配套马力 Matched power (hp)	12-20	25-35	30-35	40-50	55-70	25-35	30-45	40-50	55-80	80-100	90-120
重量 Weight (kg)	65	75	160	185	230	120	158	195	255	340	390
挂接形式 Linkage	标准三点悬挂 Standard three point mounted										



型号 Type	IL-227	IL-327	IL-427	IL-527	IL-627	IL-727	IL-230	IL-330	IL-430	IL-530	IL-630	
单犁体耕幅 Single ploughbody working width (mm)	270						300					
最大耕幅 Max. working width (mm)	540	810	1080	1350	1620	1890	600	900	1200	1500	1800	
最大耕深 Max. working depth (mm)	150-240						200-350					
配套马力 Matched power (hp)	25-35	30-45	40-50	55-80	80-100	90-120	40-50	50-80	60-80	90-120	130-160	
重量 Weight (kg)	120	158	195	260	360	400	195	260	360	470	590	
挂接形式 Linkage	标准三点悬挂 Standard three point mounted											

型号 Type	IL-235	IL-335	IL-435	IL-535	IL-635
单犁体耕幅 Single ploughbody working width (mm)	350				
最大耕幅 Max. working width (mm)	700	1050	1400	1750	2100
最大耕深 Max. working depth (mm)	200-350				
配套马力 Matched power (hp)	40-50	55-80	60-80	90-120	130-160
重量 Weight (kg)	195	320	410	550	690
挂接形式 Linkage	标准三点悬挂 Standard three point mounted				



## 液压翻转犁 Hydraulic furrow plough

本系列翻转犁适用于土壤、沙壤土地区熟地旱田耕作。它具有结构简单，耕作适应范围大，作业质量好，地表平整，碎土性能好，墒沟小等特点。  
Applicable for dry sand soil. With whole hanging, simple structure, wide application, good working, etc.

型号 Type	1LF-325	ILF-425	ILF-525	ILF-625	ILF-725	ILF-327	ILF-427	ILF-527	ILF-627	ILF-727
单犁体耕幅 Single ploughbody working width(mm)	250					270				
最大耕幅 Max. working width (mm)	750	1000	1250	1500	1750	810	1080	1350	1620	1890
最大耕深 Max. working depth (mm)	150-240									
配套马力 Matched power (hp)	30-50	40-80	55-90	80-120	90-140	30-50	40-80	55-90	80-120	90-140
重量 Weight (kg)	420	520	720	840	980	420	520	720	840	980
挂接形式 Linkage	标准三点悬挂 Standard three point mounted									

型号 Type	ILF-230	ILF-330	ILF-430	ILF-530	ILF-630	ILF-730	ILF-235	ILF-335	ILF-435	ILF-535	ILF-635	ILF-735
单犁体耕幅 Single ploughbody working width (mm)	300						350					
最大耕幅 Max. working width (mm)	600	900	1200	1500	1800	2100	700	1050	1400	1750	2100	2450
最大耕深 Max. working depth (mm)	200-350											
配套马力 Matched power (hp)	40-50	50-80	60-80	90-120	130-160	160-200	40-50	50-80	80-100	120	130-155	160-200
重量 Weight (kg)	480	630	880	1200	1500	1850	480	650	880	1200	1550	1900
挂接形式 Linkage	标准三点悬挂 Standard three point mounted											



## 自走式喷药机 Self-propelled Sprayer

高地隙喷杆喷药机配套 28 马力单缸柴油机，四轮四驱，轮距可调，液压升降伸展喷杆、喷幅 12 米、药箱容积 1000 升，每分钟最少可喷 1 亩地。该产品性能好，效率高。可对各种农作物进行早、中、晚期病虫害及化控药剂喷洒。

1. 实心轮胎和充气轮胎两种定制款，客户可根据自己的要求选择
2. 实心轮胎，宽度 8cm，优势：防止压苗，伤苗
3. 充气轮胎，宽度 12cm，优势：减震效果好
4. 您也可以同时选择两种轮胎，想用实心款用实心，想用充气用充气
5. 柴油机可以根据客户要求匹配，28、32、43 马力柴油机
6. 轮距有 30cm，左右各 15cm 的可调节度，轮距宽度可以定制，1.2-1.5，1.5-1.8，1.7-2.0 米（常规）通高度最度可达 1.5 米，给玉米高秆作业打药足够，低可以到 60cm，客户可以根据自己种植情况定制。

Highland gap spray rod spraying machine with 28 horsepower single-cylinder diesel engine and four-wheel all-wheel-drive, track width adjustable, hydraulic lifting stretching rod spraying, spray, tank volume is 1000 litre, 12 meters high at least can spray 1 mu per minute. The product has good performance and high efficiency. All kinds of crops can be used early, medium, late diseases and insect pests and chemical control agents spraying.

1. Both solid tire and inflatable tyres can be customized according to their own requirements
2. Solid tire, width 8cm, advantage: prevent pressure seedling, injury seedling
3. Inflatable tire, width 12cm, advantage: the cushioning effect is good
4. You can also choose two types of tires at the same time. You want to use the solid money to use the solid, and you want to inflate it with air
5. Diesel engine can match according to customer requirements, 28, 32, 43 HP diesel engine

There are about 30 cm, 6. Track width adjustable degree to 15 cm, wheel track width can be customized, 1.2-1.5, 1.5, 1.8, 1.7-2.0 meters (conventional) the degree of 1.5 meters high, spray insecticide enough to corn growing homework, can lower to 60 cm, customers can customize according to grow their own situation.

型号 Model	单位 Unit	3WZC-1000
药筒容积 Capacity	L	1000
喷幅 Spraying width	m	12
喷射高度 Spraying height	m	0.5-1.7
喷头个数 No.of nozzle	pcs	24, made of German
离地间隙 Ground clearance	cm	100-120
轮胎型号 Type of tyres		1230*80mm, 实心轮胎, 可以更换充气轮胎
轮距 Spacing of tyre	m	1.7-2.0, 可调 adjustable
喷杆设置 Spray lance setting		喷杆前置, 五段, 液压伸缩升降

		Spray lance in the front, has 5pcs, Hydraulic Telescopic Lifting
动力 Power		28 马力单缸柴油机 28hp Single Cylinder Diesel Engine
自重 Weight	kg	1600



### 3W 悬挂式喷雾器 Mounted boom sprayer

新型的杆式喷药机适用于轮式拖拉机，3W 系列悬挂式杆式喷药机有很多优势，使用灵活，操作简单，便于农作物的灭虫、施肥和除草。该机器管道采用特殊防腐材质，有优良的耐腐蚀性能。另外，机器采用双缸隔膜泵的流体泵，压力稳定，喷杆的高度要以根据需要调节，操作便利。

As a utility model rod-spray machine hung onto roller tractor, this 3W Series suspended type rod spray machine owns many advantages, such as flexible use, simplified operation and alike, so it is suitable for the extermination of disease and insect pest of crops, foliar nutrient and weedicide spray. For the pipelines of machine, adopt special anti-corrosive material so that an excellent corrosion-resistance performance, in addition, adopt double-cylinder membranous pump for fluid pump in order to acquire stable working pressure and even spray, also the height of spray-rod can be regulated as required so that it is convenient for driver to operation.

型号 Models	单位	3W-200	3W-300	3W-400	3W-500	3W-600	3W-700	3W-800	3W-1000
药箱容量 Tank capacity	L	200	300	400	500	600	700	800	1000
喷幅 Spray width	M	6			10				
喷头数量 No. of spray nozzle	PCS	12	12	12	20	20	20	20	20
配套动力 Matched power		20-30	30-40	40-50	50-55	55-60	60-75	75-80	80-100
整机重量 Total weight	KG	210	225	240	260	270	290	310	330
压力泵型号 Type of pump		MB90	MB90	MB90	MB110	MB110	MB110	MB110	MB4115
挂接方式 Linkage		三点悬挂 Three-pointed mounted							
喷头产地 Spray nozzle origin		德国 German							

型号 Models	单位 Unit	3W-500	3W-700	3W-800	3W-1000	3W-1000	3W-1000
药箱容量 Tank capacity	L	500	700	800	1000	1000	1000
喷幅 Spray width	M	12				14	16
喷头数量 No.of spray nozzle	PCS	24	24	24	24	28	32
配套动力 Matched power		55-60	60-75	80-90	80-100	80100	90-110
整机重量 Total weight	KG	270	300	320	340	350	360
压力泵型号 Type of pump		MB110	MB110	MB110	MB4115	MB4115	MB4115
挂接方式 Linkage		三点悬挂 Three-pointed mounted					
喷头产地 Spray nozzle origin		德国 German					





## 果园弥雾机 Orchard mist sprayer

3MZ 系列果园弥雾机主要用于果园防治病虫害叶面施肥、蔬菜蔬菜、林业防治病虫害、大田播前喷洒除草剂以及城市绿化等喷洒作业。该机具有弥雾均匀，生产效率高，穿透力度强，劳动强度小，药液覆盖面大，附着性好等特点。

1. 风扇喷洒头德国制造。
2. 我们的产品设计时有释放压力回流和负压回收设备，以确保在喷射管液体回流到容器的管道关闭，减少了液体浪费和环境污染。
3. 容器中有混合喷射装置，以便药液混合均匀。

型号 Model	单位 Unit	3MZ-200	3MZ-300	3MZ-400	3MZ-500	3MZ-600	3MZ-800	3MZ-1000
容积 Capacity	L	200	300	400	500	600	800	1000
垂直射程 Vertical Firing distance	m	4.5	4.5	4.5	4.5	4.5	4.5	4.5
工作效率 Working efficiency	ha/h	0.6-1	0.6-1	0.6-1	0.6-1	0.6-1	0.6-1	0.6-1
配套动力 Matched power	hp	18	22	25	25	35	55	75
重量 Weight	kg	160	170	185	200	215	240	270
挂接方式 Linkage		三点悬挂 Three-pointed mounted						



## 1GQN 系列轻型旋耕机 1GQN series Light duty rotary tiller

1GQN 系列旋耕机采用中间齿轮传动结构，是为 15-160 马力拖拉机配套的耕作机械。该机质量可靠，性能优良，能适合旱地和水田操作。有强农时、省劳力、作业质量高、成本低等特点。

1GQN series rotary tiller with middle gear transmission, it can be mounted with the tractor 15-160hp. We can't see the wheel tracks on the soil after it worked. The quality of the rotary tiller is good and the function very well. It is suited to dry land and paddy field. It can save time, labor and money etc.

型号 Models	1GQN-80	1GQN-100	1GQN-125	1GQN-140	1GQN-150	1GQN-160	1GQN-180	1GQN-200	1GQN-220	1GQN-250	1GQN-300
配套动力 Matched power (hp)	15-20	18-22	20-25	25-30	25-30	30-40	50-60	55-75	60-80	75-80	90-120
耕幅 Working width (mm)	700	900	1200	1300	1400	1500	1650	1850	2150	2350	2850
耕深 Working depth (cm)	10-18	10-18	10-18	10-18	10-18	12-20	12-20	12-20	12-20	12-20	12-20
刀片数量 No. of knife (pcs)	18	22	26	30	34	38	42	46	50	58	70
刀片型号 Type of knife	IT225						IT245				
整机重量 Total weight(kg)	175	180	190	200	210	230	350	380	390	420	480
挂接方式 Linkage	三点悬挂 Three-pointed mounted										



红日农机



追求创新



结合实际

服务三农

## 1GLN 侧传旋耕机 1GLN side-drive rotary tiller

1GLN 欧洲系列旋耕机与半轴齿轮传动;1GLN 系列旋耕与侧齿轮传动, 它可安装在拖拉机 12-100 马力。工作后可以覆盖全部轨迹。该机质量可靠, 性能良好。它适合于旱地和水田, 有节省时间, 人力和金钱等特点。

1GLN series European rotary tiller with side gear transmission. 1GLN series rotary tiller with side gear transmission, it can be mounted with the tractor 12-100 hp. We can't see the wheel tracks on the soil after it worked. The quality of the rotary tiller is good and the function very well. It is suited to dry land and paddy field. It can save time, labor and money etc. strong point.

型号 Models	1GLN-85	1GLN-105	1GLN-125	1GLN-140	1GLN-150	1GLN-150	1GLN-160	1GLN-180	TM-180	TM-200	TGLN-200	TGLN-220	TGLN-240
配套动力 Matched power(hp)	20	20-25	25-30	25-30	40	40-50	40-50	50-55	55-70	55-75	60-80	65-80	70-80
耕幅 Working width(mm)	850	1045	1245	1345	1495	1500	1550	1750	1750	1950	1950	2150	2350
耕深 Working depth(mm)	120-140						120-160			120-200			
刀片数量 No. of knife (pcs)	16	20	24	28	32	32	36	40	40	40	40	44	48
转速 PTO Input speed	540rpm/min								540rpm/min				
整机重量 Total weight(kg)	200	220	240	260	280	310	320	350	440	460	560	590	620
挂接形式 Linkage	标准三点悬挂 Standard three point mounted								标准三点悬挂 Standard three point mounted				



红日农机



追求创新



结合实际



服务三农

## SGTN 旋耕灭茬机 SGTN Rotary tillage stubble cleaner

SGTN 系列旋耕机采用中间齿轮传动结构，是为 12-80 马力拖拉机配套的耕作机械。该机采用宽耕幅、对称悬挂使轮迹全部覆盖。该机质量可靠，性能优良，能适合旱地和水田操作。有省时、省力、作业质量高成本低等特点。

SGTN series rotary tiller is adopted middle gear transmission system, mounted with the tractor of 12-80HP. Tractor wheel tracks are completely covered after tillage as the working width is much wider. The quality is reliable and the performance is well. So it can be used on dry and paddy field. It can reduce the time, laboring, and cost, etc. during operation.

型 号 Models	SGTN-10	SGTN-12	SGTN-14	SGTN-15	SGTN-16	SGTN-18	SGTN-20	SGTN-22	SGTN-25
	0	5	0	0	0	0	0	0	0
配套动力 Matched power(hp)	18-22	20-25	25-30	25-30	30-40	50-60	55-75	60-80	75-90
耕幅 Working width(cm)	90	120	135	140	150	170	185	205	240
耕深 Working depth(cm)	8-16	8-16	8-16	8-16	8-16	8-16	8-16	8-16	8-16
刀片数量 No. of knife(pcs)	24	24	24	24	24	32	32	40	40
刀片型号 Type of knife	L type								
整机重量 Total weight(kg)	200	210	220	230	250	370	390	410	440



## 1W 系列挖坑机 1W SERIES POST HOLE DIGGER

该挖坑机配套四轮拖拉机，后动力输出。该机具结构紧凑，性能优良，易于操作，通过更换钻头可以实现多规格的挖坑作业。适用于植树造林、立桩等挖坑作业。

该机具有如下特点：

1. 挖坑工作靠机械动力下挖，负荷能力强、效率高。
2. 钻挖平稳，成坑质量好，挖出的土壤堆在坑边附近。
3. 该机结构紧凑，耐用性强，保养方便。

This post hole digger matched with four wheels tractor, rear power output . This machine structure is compact, good performance, easy to operate, through the bit change can realize many specifications of dig a hole operation. Suitable for afforestation, made pile and dig a hole operation .

This machine has the following feature:

1. Dig a hole work by mechanical power dig under, load ability, high efficiency.
2. Drill dig smooth , into the pit of good quality , digging out the soil pile in the pit near side .
3. This machine structure is compact , durability strong ,maintenance is convenient.

型号 Models	单位 Unit	1W-400	1W-500	1W-600	1W-700	1W-800
钻头直径 Drill Diameter	mm	400	500	600	700	800
工作深度 Working depth	mm	400-700	500-800			500-1000
配套动力 Matched power	KW	22-53	22-53	36.7-55	36.7-55	36.7-55
重量 Weight	kg	230	240	251	260	270
挂接形式 Linkage		三点悬挂 Three- pointed mounted				
工作效率 Productivity	Caves/hour	60-120	60-120	60-120	60-120	60-120
运输间隙 Transport clearance	mm	>300				



红日农机

追求创新

结合实际

服务三农

## 犁耙片 Plough / Harrow Disc Blade

我们选用锰钢和硼钢属性的弹簧钢，作为原材料。根据材料的不同，在经过不同的热处理工艺后，达到理想化的硬度值。锰钢材质硬度：45-48HRC；硼钢材料硬度：45-48HRC。我们将根据您的要求，选用不同的材质。

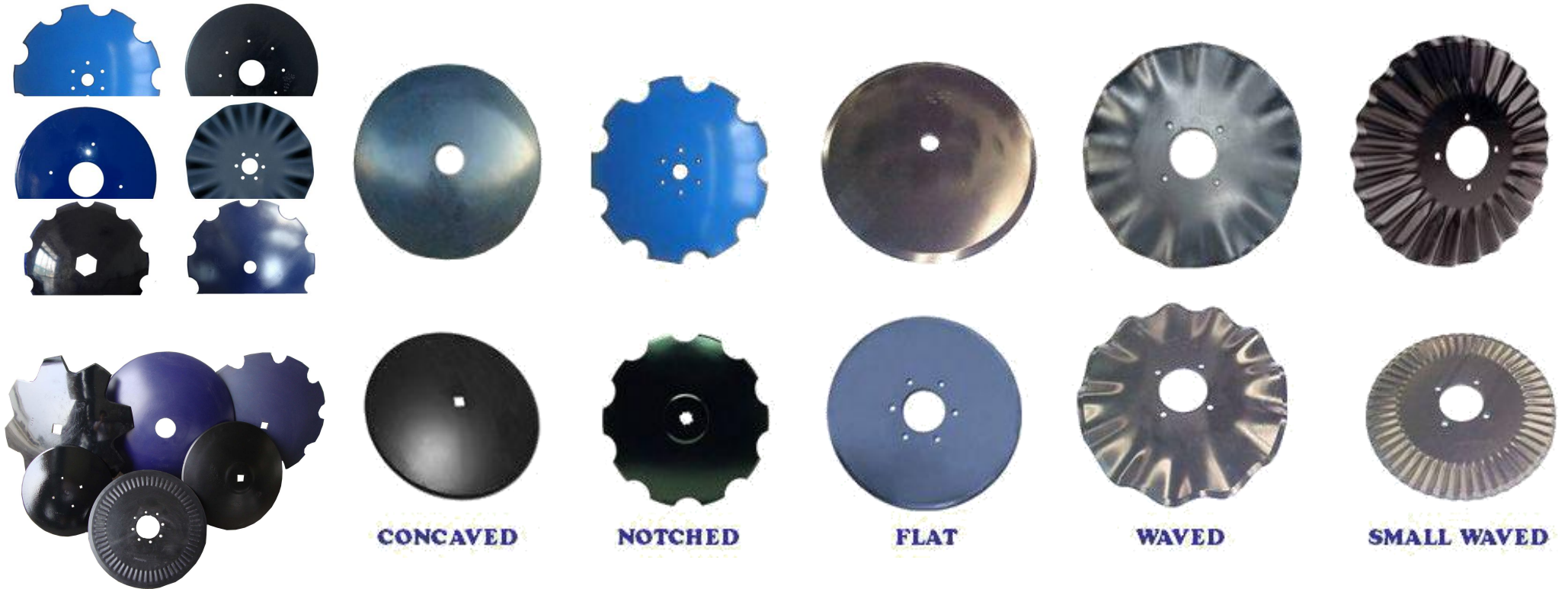
可生产的直径范围是 12" -40" (300-1010mm)，可生产厚度为 3-12mm。外形有缺口的，圆盘的，平面的，波纹的等等。如果您需要新型的，我们可以根据您的图纸或样品生产。

我们的月产量为 5000-8000 片/月。

Our disk material has manganese steel and boron steel two kinds. Heat treatment hardness is different, for material manganese hardness is 38-45HRC, for boron material boron steel hardness is 45-48HRC. We will following your requirements using different material.

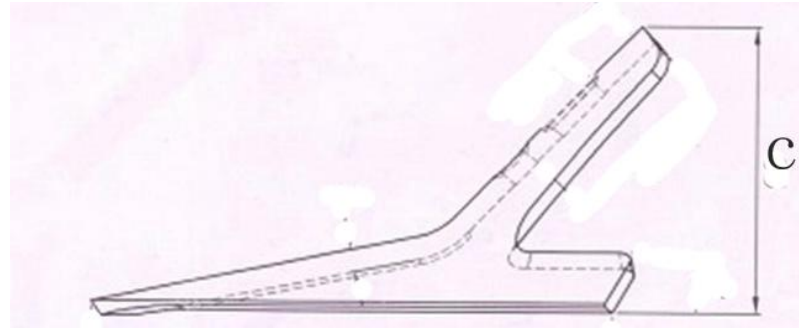
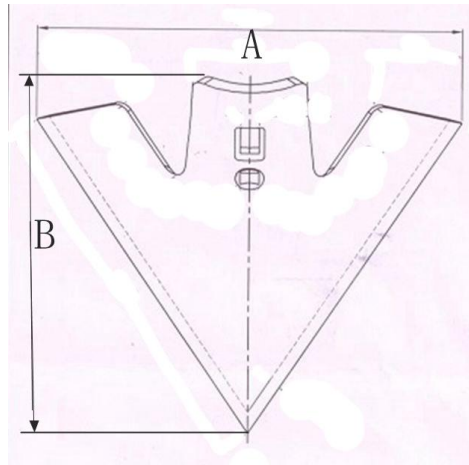
We are able to machining disk diameter from 12" to 40", thickness from 3mm to 12mm. The form has notched, smoothed, flat, waved and so on. If you have drawing, we are able to following your drawing to machining.

Our production capacity is 5,000-8,000pcs/month.



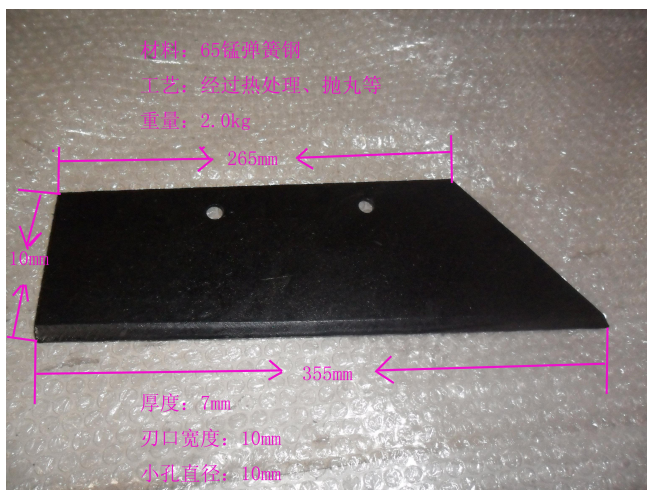
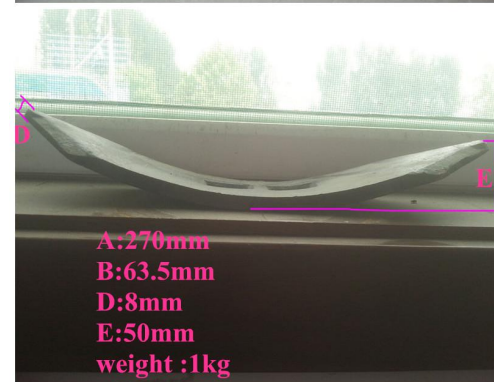
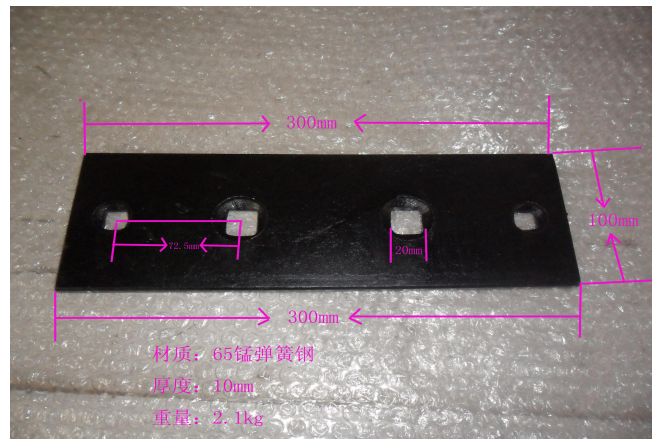
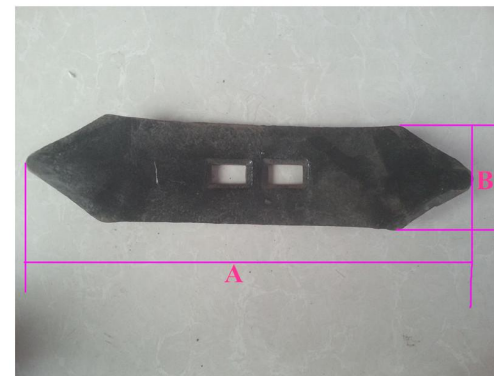
序号 Item	规格 Diameter * Thickness	重量 Weight (kg)		序号 Item	规格 Diameter * Thickness	重量 Weight (kg)
1	10''*2.65mm	1.1		28	26''*5mm	14.5
2	12''*3mm	1.77		29	26''*6mm	17
3	14''*3mm	2.4		30	26''*7mm	19.5
4	14''*3.5mm	2.79		31	26''*8mm	23
5	14''*4mm	3.19		32	28''*6mm	20
6	14''*5mm	3.99		33	28''*8mm	27
7	16''*3mm	3		34	28''*10mm	33
8	16''*3.5mm	3.6		35	30''*10mm	38
9	16''*4mm	3.86		36	30''*12mm	46
10	16''*4.5mm	4.6		37	32''*10mm	44
11	18''*3mm	4.2		38	32''*12mm	52
12	18''*3.5mm	4.6		39	36''*12mm	65
13	18''*4mm	5.5		40	38''*10mm	64
14	18''*4.5mm	6.2		41	38''*12mm	80
15	18''*5mm	7.3		42	42''*12mm	100
16	20''*3mm	4.9		43	46''*12mm	120
17	20''*3.5mm	5.8				
18	20''*4mm	6.6				
19	20''*4.5mm	7.3				
20	20''*5mm	8.2				
21	20''*6mm	9.54				
22	22''*4mm	8				
23	22''*4.5mm	9				
24	22''*5mm	10				
25	22''*6mm	11				
26	24''*5mm	11.5				
27	24''*6mm	15				

## 松土铲 Cultivator Sweep

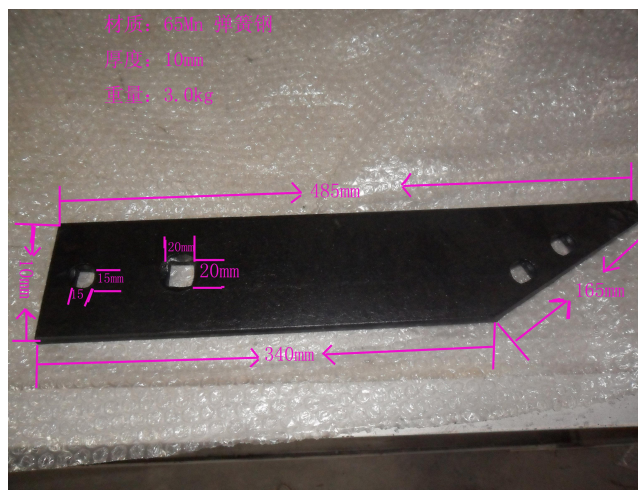


长度(mm) Length	宽度(mm) Width	高度(mm) Height	厚度(mm) Thickness
A	B	C	
310	280	50	4
300	230	110	5
250	210	110	6
260	240	160	5
180	220	100	5
500	400	160	6
200	155	80	4
550	420	160	6
185	230	120	5
185	150	100	5





红日农机

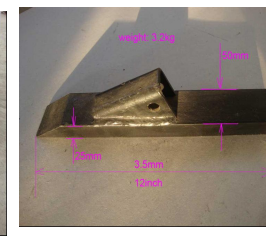
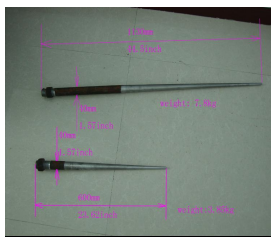
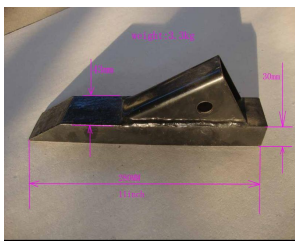
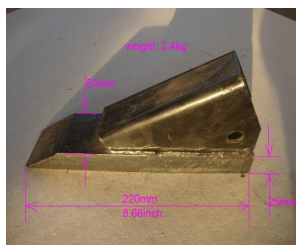
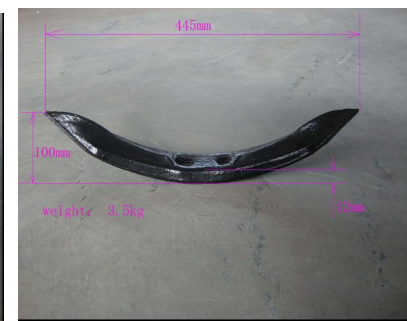
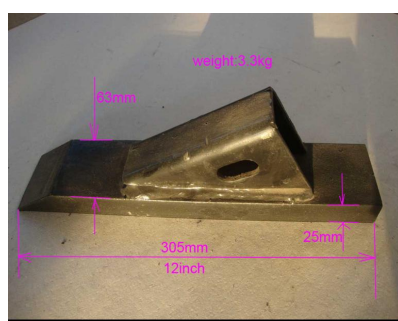
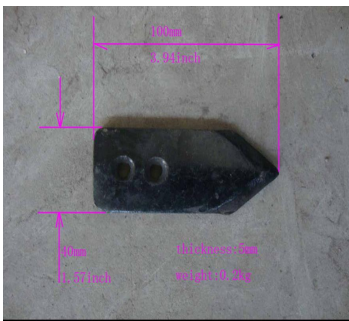
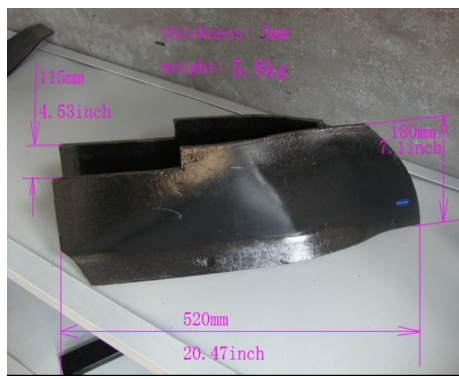


追求创新

结合实际



服务三农



红日农机

追求创新

结合实际

服务三农

## 拖车 Trailer

7C 系列农用拖车有 0.5-15 吨多个规格，该产品结构合理，外形美观，经济耐用，可与多种型号的拖拉机配套。7C 系列农用拖车分为挂式和半挂式，自卸和非自卸等多种形式，可与 8-120 马力各种型号拖拉机配套，适用于公路和田间运输。

The 7C series farm trailer has various types from 0.5T to 15T. The product has reasonable structure; beautiful appearance, economic and durable and can match various types of tractors. The 7C series agriculture divide into the suspension type and half suspension type with the trailer, self-discharging and not self-discharging and so on. The load-carrying capacity matching with each kind of 8-120 horsepower tractor is suitable for road and the field transportation.

型号 Model	单位 Unit	7CX-0.5 手扶拖车 0.5T Handle farm trailer	7C-1 手扶拖车 1T Handle farm trailer	7C-1.5 / 7CX-1.5	7C-2A / 7CX-2A
车厢尺寸 Carriage dimension	mm	1360*860*330	1800*900*320	2000*1000*450	2400*1200*450
外形尺寸 Overall dimension	mm	2670*960*1140	2800*1300*1400	3060*1450*1700 / 3060*1450*1780	3500*1600*1660 / 3500*1600*1750
载重 Rated weight	kg	500	100	1500	2000
自重 Dead weight	kg	132	198	335 / 450	365 / 469
轮胎型号和数量 Tyre size/quantity		4.00-12/2	6.00-16/2	6.50-16/2	7.00-16/2
自卸方式 Unload form		Manual assistance(back dump) 人工辅助自卸	NO 非自卸	NO 非自卸 / Hydraulic dump(back) 液压后翻	NO 非自卸 / Hydraulic dump(back) 液压后翻
刹车方式 Brake form		Machanical brake 机械刹车	Machanical brake 机械刹车	Impact/Air brake 撞刹/气刹	Impact/Air brake 撞刹/气刹
配套动力 Matched power	hp	8-12	8-12	12-15	15-18
40 尺普柜装箱数量 Quantity /GP	set	150/HQ	90	70	50 / 40



型号 Model	单位 Unit	7C-2B / 7CX-2B	7C-2.5 / 7CX-2.5	7C-3 / 7CX-3	7C-3 / 7CX-3	7C-3.5 / 7CX-3.5	7C-4 / 7CX-4
车厢尺寸 Carriage dimension	mm	2100*1500*460	2500*1500*460	3000*1600*460	3400*1700*460	3200*1800*460	3120*1920*460
外形尺寸 Overall dimension	mm	3320*1600*1750 / 3320*1600*1860	3660*1600*1830 / 3660*1600*1860	4200*1700*1850 / 4200*1700*1950	4750*1800*1950 / 4750*1800*2060	4450*1900*1850 / 4450*1900*1950	4450*2000*1450 / 4450*2000*1450
载重 Rated weight	kg	2000	2500	3000	3000	3500	4000
自重 Dead weight	kg	430 / 495	480 / 600	550 / 695	844 / 1099	630 / 770	820 / 945
轮胎型号和数量 Tyre size/quantity		7.00-16/2	7.50-16/2	7.50-16/2	7.00-16/4	7.50-16/2	8.25-16/2
自卸方式 Unload form		NO 非自卸 / Hydraulic dump(back) 液压后翻	NO 非自卸 / Hydraulic dump(back) 液压后翻	NO 非自卸 / Hydraulic dump(back) 液压后翻	NO 非自卸 / Hydraulic dump ( left & right ) 左右自卸	NO 非自卸 / Hydraulic dump(back) 液压后翻	NO 非自卸 / Hydraulic dump(back) 液压后翻
刹车方式 Brake form		Impact/Air brake 撞刹/气刹	Impact/Air brake 撞刹/气刹	Air brake 气刹	Air brake 气刹	Air brake 气刹	Air brake/ Hand brake 气刹加手刹
配套动力 Matched power	hp	15-18	18-25	18-25	20-25	25-35	35-40
40 尺普柜装箱数量 Quantity /GP	set	35 / 35	25 / 25	24 / 24	18 / 15	24 / 20	24 / 20



红日农机

追求创新



结合实际



服务三农

型号 Model	单位 Unit	7C-4 / 7CX-4	7C-5 / 7CX-5	7CX-5	7C-6 / 7CX-6	7C-8 / 7CX-8	7CX-8
车厢尺寸 Carriage dimension	mm	3800*1700*460	4000*2150*550	4000*2150*550	4500*2150*550	5500*2150*550	4000*2150*550
外形尺寸 Overall dimension	mm	5250*1800*2050 / 5250*1800*2150	5780*2250*2200 / 5780*2250*2320	5780*2250*2320	6300*2250*2380 / 6300*2250*2500	7300*2250*2380 / 7500*2250*2380	5780*2250*2380
载重 Rated weight	kg	4000	5000	5000	6000	8000	8000
自重 Dead weight	kg	1155 / 1450	1457 / 1750	1880	1670 / 2060	2180 / 2730	2096
轮胎型号和数量 Tyre size/quantity		7.50-16/4	8.25-16/4	8.25-16/4	9.00-16/4	7.50-16/8	7.50-16/8
自卸方式 Unload form		NO 非自卸 / Hydraulic dump( left & right )左 右自卸	NO 非自卸 / Hydraulic dump( left & right )左 右自卸	Hydraulic dump(left,right and back) 三向液压自卸	NO 非自卸 / Hydraulic dump( left & right )左 右自卸	NO 非自卸 / Hydraulic dump( left & right )左 右自卸	Hydraulic dump(left,right and back) 三向液压自卸
刹车方式 Brake form		Air brake 气刹	Air brake 气刹	Air brake 气刹	Air brake 气刹	Air brake 气刹	Air brake 气刹
配套动力 Matched power	hp	35-40	40-50	45-55	50-65	60-80	60-80
40 尺普柜装箱数量 Quantity /GP	set	15 / 15	10 / 10	10	10	10	10



型号 Model	单位 Unit	7C-10 / 7CX-10	7C-12 / 7CX-12	High hurdle trailer-5T 高栏拖车	Flat trailer-6T(1) 平板拖车	Flat trailer-10T(1) 平板拖车	Flat trailer-10T(2) 平板拖车
车厢尺寸 Carriage dimension	mm	6000*2150*550	6500*2150*550	4700*2150*1500	6000*2200	6500*2250	6500*2400
外形尺寸 Overall dimension	mm	7800*2250*2500 / 7800*2250*2650	8600*2250*2650 / 8600*2250*2800	6500*2200*2700	7800*2200*1110	8300*2250*1100	8300*2400*800
载重 Rated weight	kg	10000	12000	5000	6000	10000	10000
自重 Dead weight	kg	2400 / 3000	2850 / 3400	2150	1750	2050	1850
轮胎型号和数量 Tyre size/quantity		8.25-16/8	8.25-16/8	8.25-16/4	8.25-16/4	8.25-16/8	7.00-9 实心
自卸方式 Unload form		NO 非自卸 / Hydraulic dump( left & right )左 右自卸	NO 非自卸 / Hydraulic dump( left & right )左右 自卸	NO 非自卸	NO 非自卸	NO 非自卸	NO 非自卸
刹车方式 Brake form		Air brake 气刹	Air brake 气刹	Air brake 气刹	Air brake 气刹	Air brake 气刹	NO 无刹车
配套动力 Matched power	hp	80-90	80-100	40-50	50-60	80-90	80-90
40 尺普柜装箱数量 Quantity /GP	set	8 / 8	5 / 4	8	6	6	6



红日农机

追求创新

结合实际

服务三农

型号 Model	单位 Unit	Flat trailer-11T 平板拖车	7CX-20	7CX-1(E)	7CX-1.5(E)	7CX-2(E)	7CX-3(E)
车厢尺寸 Carriage dimension	mm	6000*2400	8000*2500*1300	2000*1000*330	2000*1000*360	2500*1500*460	3100*1600*460
外形尺寸 Overall dimension	mm	7850*2400*900	9800*2620*2800	2970*1100*970	2970*1100*1070	3700*1600*1400	4300*1700*1400
载重 Rated weight	kg	11000	20000	1000	1500	2000	3000
自重 Dead weight	kg	2350	5800	305	350	650	990
轮胎型号和数量 Tyre size/quantity		8.25-16/8	9.00-20/8	ST175/80D13	185R14C	10.0/75-15.3	10.0/75-15.3 14PR/2
自卸方式 Unload form		NO 非自卸	Hydraulic dump( left & right )左右自卸	Hydraulic dump(back) 液压后卸	Hydraulic dump(back) 液压后卸	Hydraulic dump(back) 液压后卸	Hydraulic dump(back , left & right ) 三向自卸
刹车方式 Brake form		Air brake 气刹	Air brake 气刹	Air brake 气刹	Air brake 气刹	Air brake/ Hand brake 气刹加手刹	Air brake 气刹
配套动力 Matched power	hp	80-90	80-100	12-18	12-18	18-24	24-30
40 尺普柜装箱数量 Quantity /GP	set			40	40	25	16



红日农机



追求创新



结合实际

服务三农

型号 Model	单位 Unit	7CX-3(E)	7CX-3(E)	7CX-4(E)	7CX-5(E)	7CX-5(E)
车厢尺寸 Carriage dimension	mm	3400*1700*460	3400*1700*(460+460)	3400*2000*(460+460)	3700*1900*(460+460)	3700*1900*(460+460)
外形尺寸 Overall dimension	mm	4900*1820*1360	4900*1820*1810	4900*1820*1860	5020*1990*1855	5020*1990*1855
载重 Rated weight	kg	3000	3000	4000	5000	5000
自重 Dead weight	kg	1150	1160	1325	1350	1420
轮胎型号和数量 Tyre size/quantity		10.0/75-15.3 16PR/2	10.0/75-15.3 16PR/2	11.5/80-15.3 16PR/2	400/60-15.5 14PR/2	400/60-15.5 14PR/2
自卸方式 Unload form		Hydraulic dump(back , left & right ) 三向自卸	Hydraulic dump(back) 液压后卸	Hydraulic dump(back , left & right ) 三向自卸	Hydraulic dump(back) 液压后卸	Hydraulic dump(back , left & right ) 三向自卸
刹车方式 Brake form		Air brake/ Hand brake 气刹加手刹	Air brake/ Hand brake 气刹加手刹	Air brake/ Hand brake 气刹加手刹	Air brake/ Hand brake 气刹加手刹	Air brake/ Hand brake 气刹加手刹
配套动力 Matched power	hp	24-30	24-30	24-30	40-50	40-50
40 尺普柜装箱数量 Quantity /GP	set	16	16	16	16	16



红日农机



追求创新

结合实际



服务三农



型号 Model	单位 Unit	7CX-5(E)	7CX-5(E)	7C-7(E)	7CX-7(E)	7CX-8(E)
车厢尺寸 Carriage dimension	mm	4100*2100*550	4100*2100*(550+550)	4100*2100*(460+460)	4100*2100*(460+460)	4100*2100*(550+550)
外形尺寸 Overall dimension	mm	5830*2200*1715	5830*2200*2265	5830*2200*2050	5830*2200*2050	5830*2200*2260
载重 Rated weight	kg	5000	5000	7000	7000	8000
自重 Dead weight	kg	1950	2165	1700	2100	2315
轮胎型号和数量 Tyre size/quantity		11.5/80-15.3 10PR/4	11.5/80-15.3 10PR/4	10.0/75-15.3 16PR/4	10.0/75-15.3 16PR/4	11.5/80-15.3 16PR/4
自卸方式 Unload form		Hydraulic dump(back , left & right ) 三向自卸	Hydraulic dump(back , left & right ) 三向自卸	NO 非自卸	Hydraulic dump(back , left & right ) 三向自卸	Hydraulic dump(left and right ) 左右自卸
刹车方式 Brake form		Air brake 气刹	Air brake 气刹	Air brake 气刹	Air brake 气刹	Air brake 气刹
配套动力 Matched power	hp	50-60	50-60	50-60	50-60	60-80
40 尺普柜装箱数量 Quantity /GP	set	10	10	10	10	10



红日农机



追求创新



结合实际

服务三农

禹城市红日机械制造有限公司

可以来图来样加工

我们是工厂

我们自己生产

我们对产品负责，用质量取胜

欢迎您来参观我们的工厂



红日农机

追求创新

结合实际

服务三农