



Jzz Auto

Exhaust Parts



**EXHAUST TIPS
MUFFLER**

**RESONATOR
OEM MUFFLER AND
CATALYSIS**

S/STEEL TAIL PIPES _____ P1-34

UNIVERSAL MUFFLER _____ P35-49

RESONATOR MUFFLERS _____ P50-51

**DIRECT FIT EXHAUST SYSTEM,
CATALYTIC CONVERTER, TAIL PIPE** _____ P52-78

**FLEXIBLE PIPE, FLANGES, HANGER,
X Y PIPE, ELLOWS, EXHAUST WRAP, CLAMP** _____ P79-80

O2 CEL FIX ADAPTER _____ P81

UNIVERSAL CATALYTIC CONVERTER _____ P82

EXHAUST VALVE _____ P83-84



CODE	IN	OUT	LEN
DJ1013a	63(2.5")	138*76	213
DJ1013b	51(2")	138*76	186



CODE	IN	OUT	LEN
DJ1013d	63(2.5")	138*76	213
DJ1013e	51(2")	138*76	186



DJ1013 without mesh

IN	63 (2.5")
OUT	138*76
LEN	213



DJ1013c

IN	63 (2.5")
OUT	138*76
LEN	213



DJ1013f

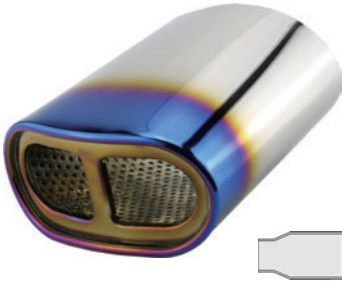
IN	57 (2 1/4")
OUT	100*68
LEN	153



DJ1018

IN	88*133
OUT	138*67
LEN	161





DJ1018a

IN	133*88
OUT	138*67
LEN	161



Technology polishing and manufacturing process make excellent product.



DJ1023

IN	63 (2.5")
OUT	138*76
LEN	213



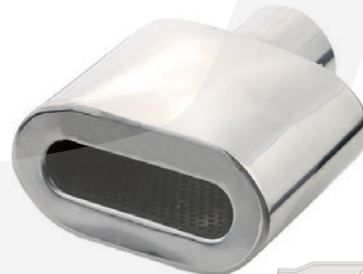
DJ1023a

IN	63 (2.5")
OUT	138*67
LEN	228



DJ1023b

IN	63 (2.5")
OUT	138*76
LEN	390



DJ1023c

IN	57 (2.25")
OUT	143*68
LEN	158



DJ1023d

IN	51 (2")
OUT	130*80
LEN	140



DJ1023e

IN	63 (2")
OUT	138*76
LEN	213



DJ1027

IN 63 (2.5")

OUT 100*75

LEN 180



DJ1028

IN 77*94

OUT 91*88

LEN 121



DJ1028a

IN 73 (2 4/5")

OUT 96*86

LEN 136



DJ1028b

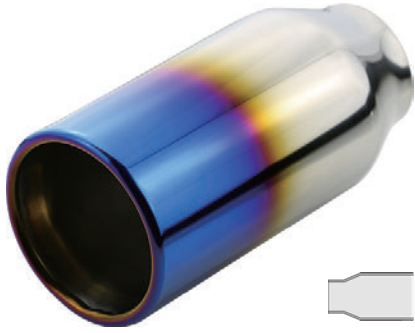
IN 77*94

OUT 96*72

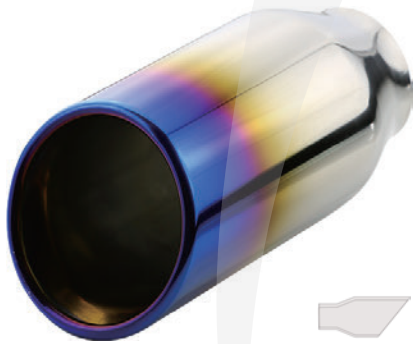
LEN 135



HAVE FAITH IN YOURSELF



CODE	IN	OUT	LEN
DJ2017e	51(2")	76(3")	150
DJ2017f	51(2")	89(3.5")	155
DJ2017g	51(2")	102(4")	155
DJ2017h	51(2")	114(4.5")	155



CODE	IN	OUT	LEN
DJ2027e	51(2")	76(3")	150
DJ2027f	51(2")	89(3.5")	155
DJ2027g	51(2")	102(4")	155
DJ2027h	51(2")	114(4.5")	155



DJ2027m

IN	63 (2.5")
OUT	89 (3.5")
LEN	180



DJ2027z

IN	63 (2.5")
OUT	102(4")
LEN	150



CODE	IN	OUT	LEN
DJ2013	51(2")	102(4")	145
DJ2013a	51(2")	114(4.5")	145



CODE	IN	OUT	LEN
DJ2023d	51(2")	102(4")	145
DJ2023e	51(2")	114(4.5")	145



DJ2023

IN	63 (2.5")
OUT	89 (3.5")
LEN	155



DJ2023a

IN	63 (2.5")
OUT	89 (3.5")
LEN	155



DJ2023b

IN	63 (2.5")
OUT	89 (3.5")
LEN	155



DJ2023c

IN	76 (3")
OUT	102 (4")
LEN	176



CODE	IN	OUT	LEN
DJ2017i	102(4")	114(4.5")	344
DJ2017j	76(3")	100(4")	257



CODE	IN	OUT	LEN
DJ2027j	102(4")	114(4.5")	270
DJ2027k	76(3")	89(3.5")	218



CODE	IN	OUT	LEN
DJ2027o	89(3.5")	102(4")	230
DJ2027p	89(3.5")	102(4")	303
DJ2027q	89(3.5")	102(4")	353
DJ2027r	89(3.5")	102(4")	410
DJ2027s	89(3.5")	102(4")	506





CODE	IN	OUT	LEN
------	----	-----	-----

DJ2018	57(2 1/4")	57(2 1/4")	110
--------	------------	------------	-----

DJ2018a	67(2 3/5")	67(2 3/5")	117
---------	------------	------------	-----



DJ2018c

IN	76 (3")
----	---------

OUT	76 (3")
-----	---------

LEN	113
-----	-----



DJ2017k

IN	89 (3.5")
----	-----------

OUT	102 (4")
-----	----------

LEN	500
-----	-----



DJ2017

IN	100 (4")
----	----------

OUT	114 (4.5")
-----	------------

LEN	184
-----	-----



DJ2017a

IN	51 (2")
----	---------

OUT	76 (3")
-----	---------

LEN	131
-----	-----



DJ2017b

IN	76 (3")
----	---------

OUT	89 (3.5")
-----	-----------

LEN	160
-----	-----



DJ2017c

IN	76 (3")
----	---------

OUT	102 (4")
-----	----------

LEN	212
-----	-----



DJ2023f

IN	130 (5 1/5")
OUT	177 (7")
LEN	380



DJ2023g

IN	71 (2 4/5")
OUT	102 (4")
LEN	120



DJ2023h

IN	63 (2.5")
OUT	127 (5")
LEN	570



DJ2027

IN	51 (2")
OUT	63 (2.5")
LEN	112



DJ2027a

IN	49 (1 9/10")
OUT	76 (3")
LEN	93



DJ2027b

IN	63 (2.5")
OUT	76 (3")
LEN	150



DJ2027c

IN	70 (2 4/5")
OUT	76 (3")
LEN	188



DJ2027d

IN	63 (2.5")
OUT	76 (3")
LEN	150





DJ2017l

IN	57 (2 1/4")
OUT	102 (4")
LEN	203



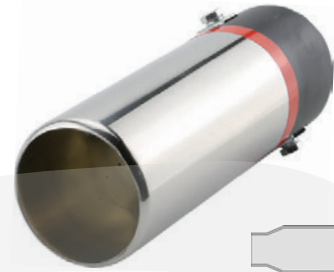
DJ2017m

IN	51 (2")
OUT	63 (2.5")
LEN	112



DJ2017n

IN	70 (2 4/5")
OUT	76 (3")
LEN	155



DJ2018b

IN	63 (2.5")
OUT	63 (2.5")
LEN	170



DJ2027i

IN	76 (3")
OUT	102 (4")
LEN	225



DJ2027l

IN	63 (2.5")
OUT	89 (3.5")
LEN	198



DJ2027n

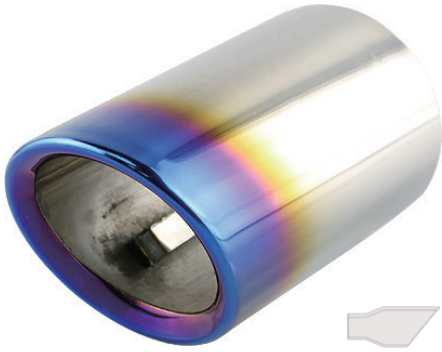
IN	57 (2 1/4")
OUT	89 (3.5")
LEN	230



DJ2027t

IN	100 (4")
OUT	114(4.5")
LEN	184





CODE	IN	OUT	LEN
DJ2028	70(2.8")	70(2.8")	137
DJ2028a	76(3")	76(3")	137



DJ2017d

IN	60 (2 2/5")
OUT	80 (3 1/5")
LEN	183



DJ2027u

IN	60 (2 2/5")
OUT	89 (3.5")
LEN	168



DJ2027v

IN	60 (2 2/5")
OUT	82*78
LEN	176



DJ2027w

IN	60 (2 2/5")
OUT	76 (3")
LEN	181



DJ2027x

IN	152 (6")
OUT	160(6 1/4")
LEN	290



DJ2027y

IN	57 (2 1/4")
OUT	67 (2.6")
LEN	147



DJ2028b

IN	76 (3")
OUT	76 (3")
LEN	120



DJ2028c

IN	63 (2.5")
OUT	76 (3")
LEN	143



DJ2028d

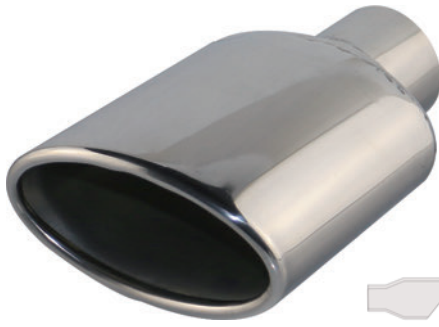
IN	102 (4")
OUT	102 (4")
LEN	193



DJ2028e

IN	152 (6")
OUT	152 (6")
LEN	201





CODE	IN	OUT	LEN
------	----	-----	-----

DJ3027	57(2 1/4")	125*75(5"*3")	200
--------	------------	---------------	-----

DJ3027c	57(2 1/4")	125*75(5"*3")	170
---------	------------	---------------	-----



DJ3023

IN	60 (2 2/5")
OUT	100*76 (4"*3")
LEN	128



DJ3023a

IN	51 (2")
OUT	114*85 (4.5"*3.5")
LEN	152



DJ3023b

IN	54 (2 1/10")
OUT	125*75 (5"*3")
LEN	165



DJ3023d

IN	63 (2.5")
OUT	105*79 (4"*3")
LEN	160



DJ3023e

IN	63 (2.5")
OUT	105*79 (4"*3")
LEN	160



DJ3023f

IN	63 (2.5")
OUT	114*85 (4.5"*3.5")
LEN	230



DJ3023g

IN	71 (2 4/5")
OUT	110*95
LEN	120



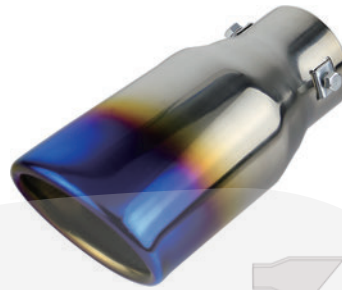
DJ3027a

IN	51 (2")
OUT	125*75 (5"*3")
LEN	213



DJ3027b

IN	60 (2 2/5")
OUT	82*72
LEN	179



DJ3027d

IN	63 (2.5")
OUT	100*80 (4"*3 1/5")
LEN	195



DJ3027e

IN	67 (2 3/5")
OUT	110*95
LEN	185



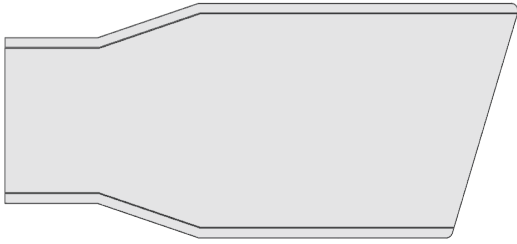
DJ3028

IN	63/70 (2.5" 2 4/5")
OUT	105*85 (4"*3.5")
LEN	140



DJ3029m

IN	65 (2.5")
OUT	85*67
LEN	140



IN 63 (2.5")

OUT 85*67

LEN 140



DJ3029



DJ3029a



DJ3029b



DJ3029c



DJ3029d



DJ3029e



DJ3029f



DJ3029g



DJ3029h



DJ3029i



DJ3029j



DJ3029k



DJ3029l



CODE	IN	OUT	LEN
DM2017a	51(2")	76(3")	150
DM2017b	51(2")	89(3.5")	155
DM2017f	63(2.5")	89(3.5")	155
DM2017g	76(3")	89(3.5")	155
DM2017c	60(2 2/5")	102(4")	155
DM2017h	63(2.5")	102(4")	155
DM2017d	63(2.5")	114(4.5")	155



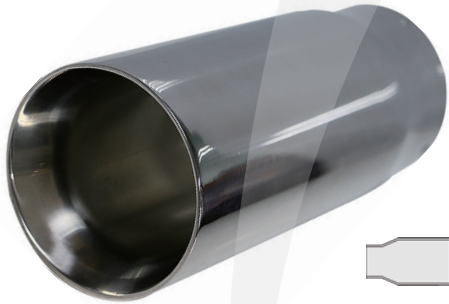
CODE	IN	OUT	LEN
DM2027a	51(2")	76(3")	150
DM2027b	51(2")	89(3.5")	155
DM2027l	63(2.5")	89(3.5")	155
DM2027m	76(3")	89(3.5")	155
DM2027c	60(2 2/5")	102(4")	155
DM2027d	63(2.5")	114(4.5")	155



Tips: We can customize various logos



CODE	IN	OUT	LEN
DM2023	63(2.5")	89(3.5")	170
DM2023a	63(2.5")	114(4.5")	150
DM2023b	63(2.5")	102(4")	150
DM2023c	63(2.5")	127(5")	150



CODE	IN	OUT	LEN
DM2017e	76(3")	80(3 1/5")	148
DM2017i	76(2")	80(3 1/5")	190



CODE	IN	OUT	LEN
DM2027e	76(3")	102(4")	177
DM2027f	63(2.5")	114(4.5")	230
DM2027g	63(2.5")	127(5")	250

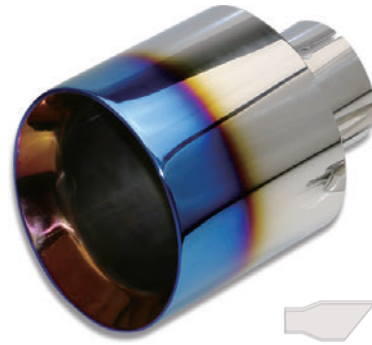


DM2013

IN 63 (2.5")

OUT 89 (3.5")

LEN 165



DM2027h

IN 63 (2.5")

OUT 114 (4.5")

LEN 152

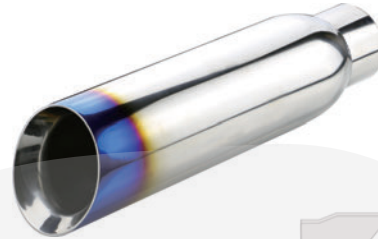


DM2027i

IN 102 (4")

OUT 150 (6")

LEN 385



DM2027j

IN 76 (3")

OUT 102 (4")

LEN 600



DM2027k

IN 51 (2")

OUT 102(4")

LEN 150



DM2027n

IN 67 (2 3/5")

OUT 102 (4")

LEN 240

DM2027o

IN 67 (2 3/5")

OUT 89 (3.5")

LEN 140



DM2028

IN 63 (2.5")

OUT 89 (3.5")

LEN 150



CODE	IN	OUT	LEN
DW2013	63(2.5")	89(3.5")	180
DW2013a	63(2.5")	102(4")	180



CODE	IN	OUT	LEN
DW2017	51(2")	76(3")	145
DW2017a	51(2")	89(3.5")	160
DW2017b	51(2")	102(4")	170



CODE	IN	OUT	LEN
DW2013b	63(2.5")	79(3 1/10")	175
DW2013c	63(2.5")	89(3.5")	175
DW2013d	63(2.5")	102(4")	175



CODE	IN	OUT	LEN
DW2018a	63(2.5")	79(3 1/10")	125
DW2018b	63(2.5")	89(3.5")	125
DW2018c	63(2.5")	102(4")	125





CODE	IN	OUT	LEN
DW2023a	63(2.5")	76(3")	155
DW2023b	63(2.5")	89(3.5")	155
DW2023c	63(2.5")	102(4")	155
DW2023d	63(2.5")	114(4.5")	155
DW2023t	51(2.5")	89(3.5")	155



CODE	IN	OUT	LEN
DW2023e	63(2.5")	76(3")	165
DW2023f	63(2.5")	89(3.5")	165
DW2023g	63(2.5")	102(4")	165
DW2023h	63(2.5")	114(4.5")	165
DW2023r	76(3")	114(4.5")	165



CODE	IN	OUT	LEN
DW2023n	63(2.5")	89(3.5")	160
DW2023o	63(2.5")	102(4")	160
DW2023p	63(2.5")	114(4.5")	160





DW3023

IN	63 (2.5")
OUT	105*78 (4"*3")
LEN	145



DW2023u

IN	63 (2.5")
OUT	89 (3.5")
LEN	155



DW2023v

IN	71 (2 4/5")
OUT	101 (4")
LEN	120



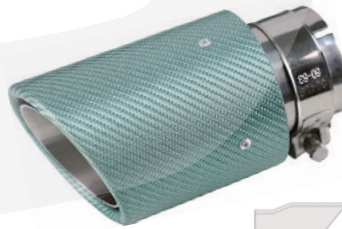
DW2023m

IN	63 (2.5")
OUT	89 (3.5")
LEN	160



DW2023i

IN	63 (2.5")
OUT	89 (3.5")
LEN	165



DW2023j

IN	63 (2.5")
OUT	89 (3.5")
LEN	165



DW2023k

IN	63 (2.5")
OUT	102 (4")
LEN	160

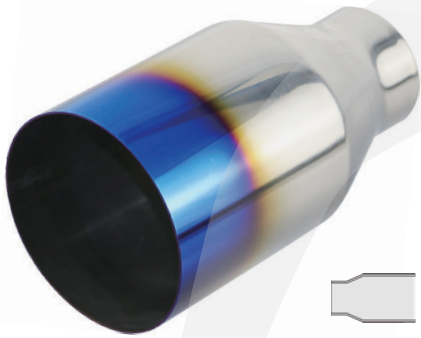


DW2023l

IN	63 (2.5")
OUT	102 (4")
LEN	160



CODE	IN	OUT	LEN
DQ2017	63(2.5")	76(3 ")	120
DQ2017a	76(3")	80(3 1/5")	148
DQ2017b	76(3")	80(3 1/5")	190



CODE	IN	OUT	LEN
DQ2017c	63(2.5")	102(4")	175
DQ2017d	63(2.5")	114(4.5")	175



CODE	IN	OUT	LEN
DQ2027	63(2.5")	102(4")	175
DQ2027a	63(2.5")	114(4.5")	175



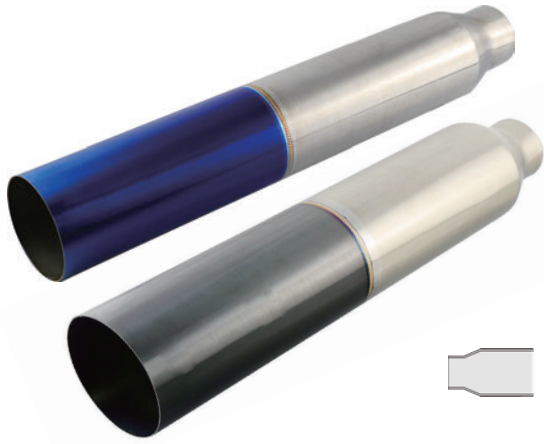
DQ1027

IN	63 (2.5")
OUT	76 (3")
LEN	150

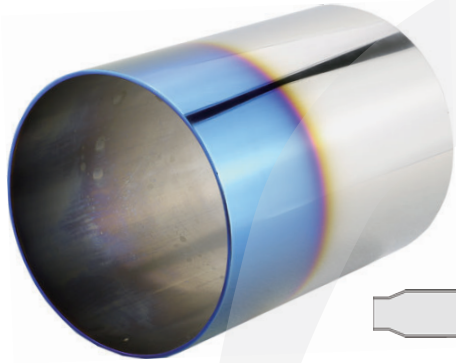


DQ2023

IN	127 (5")
OUT	165 (6.5")
LEN	965



CODE	IN	OUT	LEN
DQ2017e	63(2.5")	89(3.5")	520
DQ2017f	63(2.5")	102(4")	520

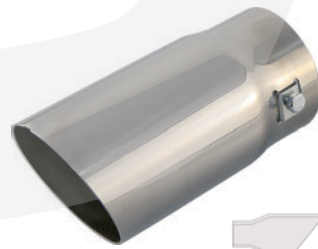


CODE	IN	OUT	LEN
DQ2018	89(3.5")	89(3.5")	127
DQ2018b	102(4")	102(4")	152
DQ2018c	114(4.5")	114(4.5")	152



DQ2027b

IN	102 (4")
OUT	134 (5 1/4")
LEN	230



DQ2027j

IN	70 (2 4/5")
OUT	76 (3")
LEN	155



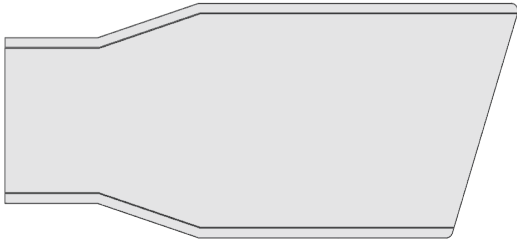
DQ2027k

IN	107 (4 1/5")
OUT	102 (4")
LEN	350



DQ2028

IN	102 (4")
OUT	102 (4")
LEN	230



IN 63 (2.5")

OUT 76 (3")

LEN 150



DQ2027c



DQ2027d



DQ2027e



DQ2027f



DQ2027g



DQ2027h



DQ2027i





Straight Type

CODE	IN	OUT	LEN
EJ20111a	51 (2")	76 (3")	200
EJ20111b	63 (2.5")	89 (3.5")	240



EJ20111c	51 (2")	76 (3")	200
EJ20111d	63 (2.5")	89 (3.5")	240



EJ20111f	63 (2.5")	89 (3.5")	7.5"
----------	-----------	-----------	------



Slant Type

CODE	IN	OUT	LEN
EJ20211a	51 (2")	76 (3")	200
EJ20211b	63 (2.5")	89 (3.5")	240



EJ20211c	51 (2")	76 (3")	200
EJ20211d	63 (2.5")	89 (3.5")	240
EJ20211i	51 (2")	89 (3.5")	240
EJ20211j	63 (2.5")	76 (3")	240
EJ20211k	57 (2 ⁶ / ₂₅ "	89 (3.5")	240



CODE	IN	OUT	LEN
------	----	-----	-----

EJ20111e	76 (3")	102 (4")	250
----------	---------	----------	-----



EJ20211g	76 (3")	102 (4")	250
----------	---------	----------	-----



CODE	IN	OUT	LEN
------	----	-----	-----

EJ20211e	63 (2.5")	76 (3")	245
----------	-----------	---------	-----

EJ20211f	57 (2 6/25")	89 (3.5")	250
----------	--------------	-----------	-----



EJ20111

IN	57 (2 6/25")
----	--------------

OUT	89 (3.5")
-----	-----------

LEN	250
-----	-----



EJ20211I

IN	63 (2.5")
----	-----------

OUT	89 (3.5")
-----	-----------

LEN	250
-----	-----



EJ20113

IN	57 (2 6/25")
----	--------------

OUT	89 (3.5")
-----	-----------

LEN	200
-----	-----



EJ20113a

IN	57 (2 6/25")
----	--------------

OUT	89 (3.5")
-----	-----------

LEN	200
-----	-----



EJ20211

IN	63 (2.5")
OUT	89 (3.5")
LEN	250



EJ20211h

IN	50 (2")
OUT	89 (3.5")
LEN	220



EJ10211

IN	63 (2.5")
OUT	128*80(5"*3 3/20")
LEN	250



EJ20212b

IN	54 (2 ³ / ₂₅ "")
OUT	89 (3.5")
LEN	248



EJ20212c

IN	63 (2.5")
OUT	89 (3.5")
LEN	245



EJ20212d

IN	57 (2 ⁶ / ₂₅ "")
OUT	89 (3.5")
LEN	250



EJ20213

IN	63 (2.5")
OUT	89 (3.5")
LEN	260



EJ2028

IN	56 (2 1/5")
OUT	76 (3")
LEN	180



EJ10212

IN	63 (2.5")
OUT	95*75 (3 3/4"*3)
LEN	240



EJ20112

IN	63 (2.5")
OUT	76 (3")
LEN	225



EJ10116a

IN	63 (2.5")
OUT	70 (2 3/4")
LEN	155



EJ10116b

IN	63 (2.5")
OUT	70 (2 3/4")
LEN	170



EJ20112a

IN	51 (2")
OUT	89 (3.5")
LEN	294



EJ2018

IN	63 (2.5")
OUT	63 (2.5")
LEN	175



EJ2019

IN	63 (2.5")
OUT	63 (2.5")
LEN	168



EJ2019a

IN	63 (2.5")
OUT	63 (2.5")
LEN	168



EJ20212

IN	63 (2.5")
OUT	76 (3")
LEN	222



EJ20212a

IN	63 (2.5")
OUT	63 (2.5")
LEN	213



EJ20213a

IN	63 (2.5")
OUT	63 (2.5")
LEN	183



EJ30214

IN	63 (2.5")
OUT	115*85 (4.5"*3 7/20")
LEN	190



EM20112

IN	51 (2")
OUT	63 (2.5")
LEN	294



EM20212j

IN	51 (2")
OUT	63 (2.5")
LEN	210

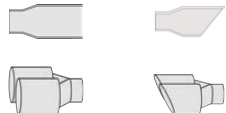


EW20112

IN	63 (2.5")
OUT	76 (3")
LEN	215



Tips:



straight

slant



left and right

same length





EQ10214

IN 67 (2 16/25")

OUT 102*50 (")

LEN 210



EQ20111

IN 63 (2.5")

OUT 76 (3")

LEN 255



EQ20111a

IN 76 (3")

OUT 102 (4")

LEN 235



EQ20212

IN 63 (2.5")

OUT 54 (2 3/25")

LEN 250



EQ20212a

IN 51 (2")

OUT 76 (3")

LEN 200



EQ20212b

IN 57 (2 6/25")

OUT 73 (3 4/5")

LEN 215



EQ20215

IN 60 (2 9/25")

OUT 76 (3")

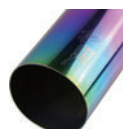
LEN 335



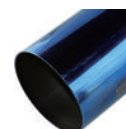
Tips:Color?? No Problem!!



Black



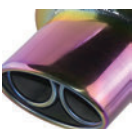
Rainbow



Blue



Gold



Purple



CODE	IN	OUT	LEN
EM20111a	51 (2")	76 (3")	200
EM20111b	63 (2.5")	89 (3.5")	240



EM20111c	51 (2")	76 (3")	200
EM20111d	63 (2.5")	89 (3.5")	240



CODE	IN	OUT	LEN
EM20211a	51 (2")	76 (3")	200
EM20211a	63 (2.5")	89 (3.5")	240



EM20211c	51 (2")	76 (3")	200
EM20211d	63 (2.5")	89 (3.5")	240





Straight Type

CODE	IN	OUT	LEN
EM20112a	51 (2")	76 (3")	200
EM20112b	63 (2.5")	89 (3.5")	240



EM20112c	51 (2")	76 (3")	200
EM20112d	63 (2.5")	89 (3.5")	240



Slant Type

CODE	IN	OUT	LEN
EM20212a	51 (2")	76 (3")	200
EM20212b	63 (2.5")	89 (3.5")	240



EM20212c	51 (2")	76 (3")	200
EM20212d	63 (2.5")	89 (3.5")	240





EM20212g

IN	57 (2 6/25")
OUT	89 (3.5")
LEN	191



EM20212h

IN	76 (3")
OUT	102 (4")
LEN	570



CODE	IN	OUT	LEN
------	----	-----	-----

EM20212e	51 (2")	76 (3")	200
EM20212f	63 (2.5")	89 (3.5")	240
EM20212i	63 (2.5")	102 (4")	240



CODE	IN	OUT	LEN
------	----	-----	-----

EW20111d-AK	51 (2")	76 (3")	190
EW20111f-AK	51 (2")	89 (3.5")	190



EW20111d	51 (2")	76 (3")	190
EW20111f	51 (2")	89 (3.5")	190



EW20111g

IN	51 (2")
OUT	89 (3.5")
LEN	190



We definitely do not use inferior carbon fiber materials.



EJ30211

IN	54 (2 3/25")
OUT	125*75
LEN	255



EJ30212

IN	58 (2 7/25")
OUT	115*85
LEN	250



EJ30213

IN	63 (2.5")
OUT	115*85
LEN	250



EJ30213a

IN	63 (2.5")
OUT	125*75
LEN	250



EJ30213b

IN	63 (2.5")
OUT	115*85
LEN	250





CODE	IN	OUT	LEN
------	----	-----	-----

EW20211a	63 (2.5")	76 (3")	240
----------	-----------	---------	-----

EW20211b	63 (2.5")	89 (3.5")	240
----------	-----------	-----------	-----

EW20211c	63 (2.5")	102 (4")	240
----------	-----------	----------	-----



CODE	IN	OUT	LEN
------	----	-----	-----

EW20111a	63 (2.5")	79 (3 1/10")	250
----------	-----------	--------------	-----

EW20111b	63 (2.5")	89 (3.5")	250
----------	-----------	-----------	-----

EW20111c	63 (2.5")	102 (4")	250
----------	-----------	----------	-----



CODE	IN	OUT	LEN
------	----	-----	-----

EW20211e	63 (2.5")	76 (3")	240
----------	-----------	---------	-----

EW20211f	63 (2.5")	89 (3.5")	240
----------	-----------	-----------	-----

EW20211g	63 (2.5")	102 (4")	240
----------	-----------	----------	-----



CODE	IN	OUT	LEN
------	----	-----	-----

EW20213a	63 (2.5")	76 (3")	240
----------	-----------	---------	-----

EW20213b	63 (2.5")	89 (3.5")	240
----------	-----------	-----------	-----

EW20213c	63 (2.5")	102 (4")	240
----------	-----------	----------	-----

EW20211h

IN	63 (2.5")
----	-----------

OUT	89 (3.5")
-----	-----------

LEN	240
-----	-----



EW20211j

IN	63 (2.5")
----	-----------

OUT	89 (3.5")
-----	-----------

LEN	240
-----	-----



CODE	IN	OUT	BODY
YZ401d	63 (2.5")	76 (3")	102 (4")*300
YZ401e	51 (2")	76 (3")	102 (4")*200
YZ451	51 (2")	89 (3.5")	114 (4.5")*300
YZ451a	51 (2")	76 (3")	114 (4.5")*260
YZ451c	51 (2")	89 (3.5")	114 (4.5")*250
YZ451d	63 (2.5")	89 (3.5")	114 (4.5")*300
YZ501	63 (2.5")	102 (4")	127 (5")*300
YZ501a	63 (2.5")	114 (4.5")	127 (5")*300
YZ501b	76 (3")	102 (4")	127 (5")*300
YZ501c	76 (3")	114 (4.5")	127 (5")*300
YZ501h	63 (2.5")	102 (4")	127 (5")*260
YZ501i	51 (2")	102 (4")	127 (5")*300
YZ601	63 (2.5")	102 (4")	152 (6")*350
YZ601a	76 (3")	102 (4")	152 (6")*350

I heard that his products are of good quality and affordable.

whaaaat???





Back Pressure Type



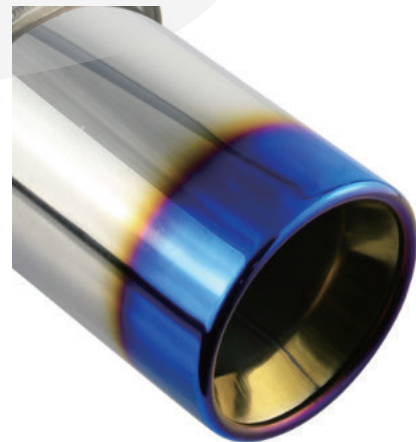
YX521

IN	51 (2")
OUT	102 (4")
BODY	130 (5.2")*300
LEN	500

YX521a

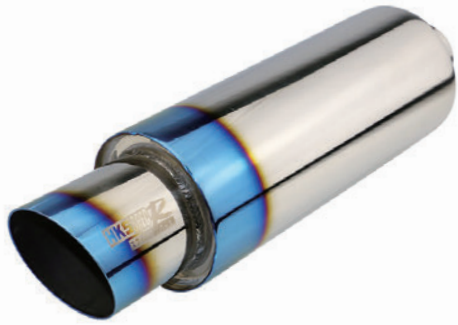
IN	51 (2")
OUT	102 (4")
BODY	130 (5.2")*300
LEN	500

Outlet different

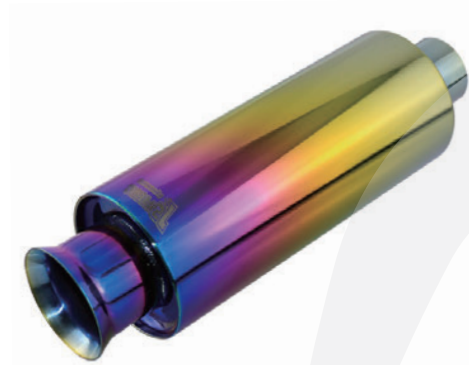


YG451

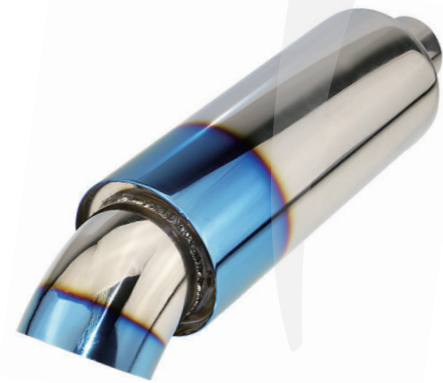
IN	51 (2")
OUT	89(3")
BODY	114 (4.5")*260
LEN	450



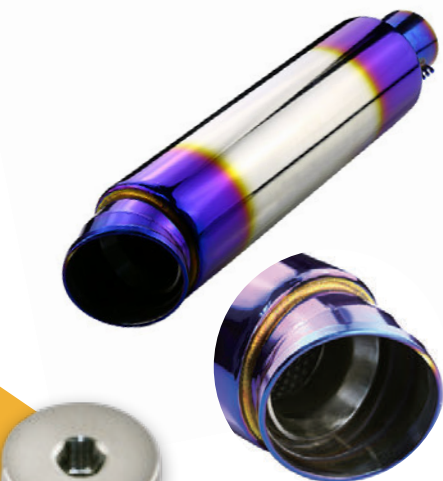
CODE	IN	OUT	BODY
YZ401	51 (2")	76 (3")	102 (4")*250
YZ451b	51 (2")	89 (3.5")	114 (4.5")*300
YZ501f	63 (2.5")	102 (4")	127 (5")*300



CODE	IN	OUT	BODY
YZ401b	51 (2")	76 (3")	102 (4")*250
YZ401g	51 (2")	76 (3")	102 (4")*200



CODE	IN	OUT	BODY
YZ401a	51 (2")	76 (3")	102 (4")*250
YZ401f	51 (2")	76 (3")	102 (4")*200
YZ501g	51 (2")	76 (3")	127 (5")*300
YZ501j	63 (2.5")	76 (3")	127 (5")*300



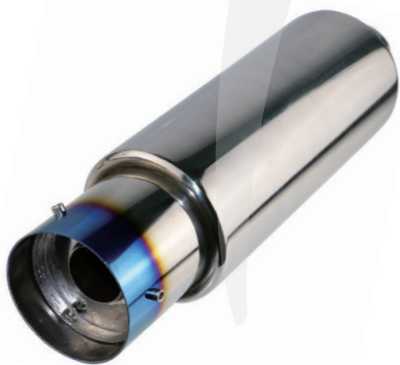
CODE	IN	OUT	BODY
YZ353	54 (2.2")	76 (3")	89 (3.5")*300
YZ401h	51 (2")	76 (3")	102 (4")*250



CODE	IN	OUT	BODY
YZ455	51 (2")	89 (3.5")	114 (4.5")*260
YZ505	63 (2.5")	102 (4")	127 (5")*300
YZ555	76 (3")	114 (4.5")	141 (5.5")*320



CODE	IN	OUT	BODY
YZ603	63 (2.5")	102 (4")	152 (6")*350
YZ603a	76 (3")	102 (4")	152 (6")*350
YZ603c	63 (2.5")	114 (4.5")	152 (6")*350



YZ502

IN	63 (2.5")
OUT	102 (4")
BODY	127 (5")*260
LEN	450



YZ552

IN	63 (2.5")
OUT	102 (4")
BODY	141 (5.5")*300
LEN	500



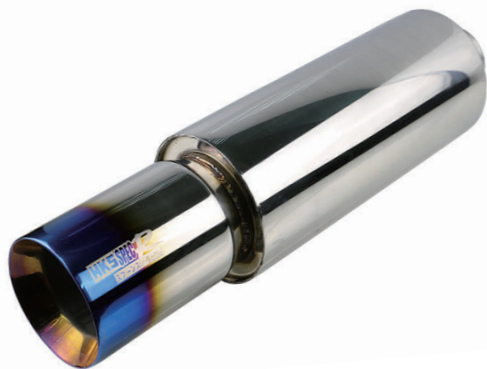
YZ452i

IN	63 (2.5")
OUT	89 (3.5")
BODY	114 (4.5")*300
LEN	450

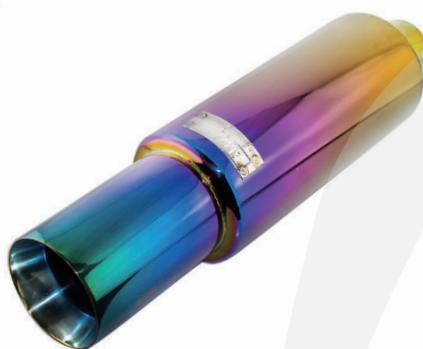


YZ502a

IN	51 (2")
OUT	102 (4")
BODY	127 (5")*350
LEN	530



CODE	IN	OUT	BODY
YZ501d	51 (2")	102 (4")	127 (5")*300
YZ501e	63 (2.5")	102 (4")	127 (5")*300



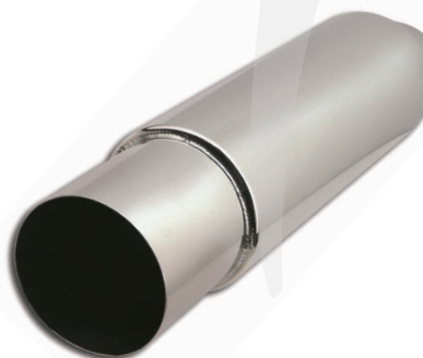
YZ503d

IN	63 (2.5")
OUT	102 (4")
BODY	127 (5")*300
LEN	530



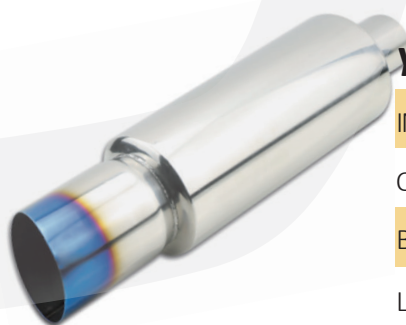
YZ452f

IN	51 (2")
OUT	89 (3.5")
BODY	114 (4.5")*260
LEN	450



YZ453

IN	63 (2.5")
OUT	102 (4")
BODY	114 (4.5")*260
LEN	450



YZ503

IN	63 (2.5")
OUT	102 (4")
BODY	127 (5")*320
LEN	530



YZ503a

IN	51 (2")
OUT	102 (4")
BODY	127 (5")*320
LEN	550



YZ503b

IN	51 (2")
OUT	102 (4")
BODY	127 (5")*320
LEN	550





CODE	IN	OUT	BODY
YZ452	51 (2")	102 (4")	114 (4.5")*260
YZ452j	63 (2.5")	102 (4")	114 (4.5")*260



YZ452h	51 (2")	102 (4")	114 (4.5")*260
--------	---------	----------	----------------



IN	51 (2")
OUT	76 (3")
BODY	114 (4.5")*260
LEN	450



IN	51 (2")
OUT	76 (3")
BODY	114 (4.5")*260
LEN	450

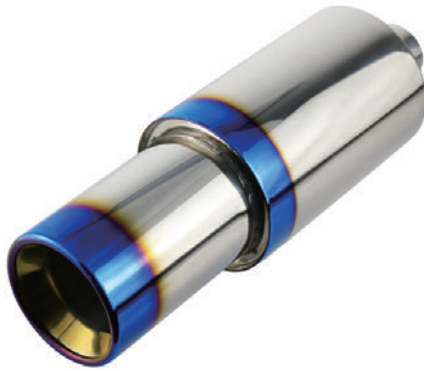


IN	51 (2")
OUT	89 (3.5")
BODY	114 (4.5")*260
LEN	450



IN	51 (2")
OUT	76 (3")
BODY	114 (4.5")*260
LEN	450





YZ501l

IN	51 (2")
OUT	102 (4")
BODY	127 (5")*300
LEN	500



YZ401c

IN	51 (2")
OUT	89 (3.5")
BODY	102 (4")*300
LEN	500



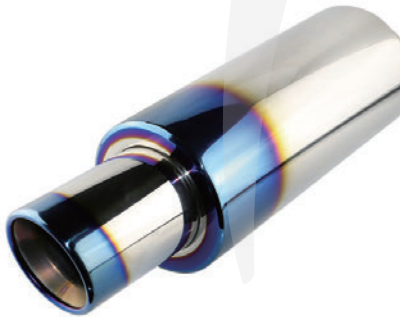
YZ553

IN	63 (2.5")
OUT	102 (4")
BODY	141 (5.5")*300
LEN	500



YZ503f

IN	63 (2.5")
OUT	102 (4")
BODY	127 (5")*300
LEN	500



YZ603b

IN	63 (2.5")
OUT	102 (4")
BODY	152 (6")*350
LEN	550



YZ673

IN	63 (2.5")
OUT	114 (4.5")
BODY	168 (6.7")*350
LEN	580



YZ673a

IN	63 (2.5")
OUT	102 (4")
BODY	168 (6.7")*350
LEN	580



YZ452e

IN	51 (2")
OUT	138*76 (6.5"*3")
BODY	114 (4.5")*300
LEN	550

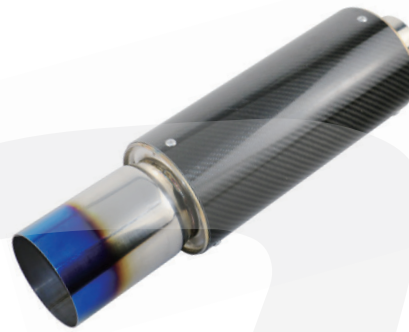


CODE	IN	OUT	BODY
SZ802	51 (2")	89 (3")	200 (8")*300
SZ802a	63 (2.5")	89 (3")	200 (8")*300
SZ802b	51 (2")	89 (3")	152 (6")*240



YZ503c

IN	63 (2.5")
OUT	102 (4")
BODY	127 (5")*300
LEN	500



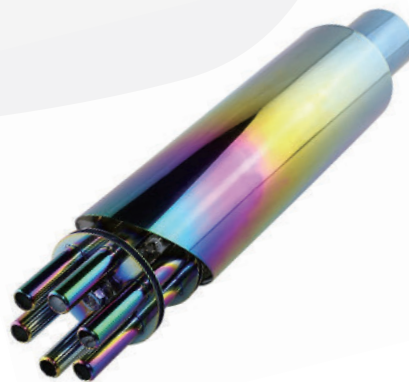
YZ501k

IN	63 (2.5")
OUT	102 (4")
BODY	127 (5")*300
LEN	500



YZ501m

IN	63 (2.5")
OUT	102 (4")
BODY	127 (5")*300
LEN	500



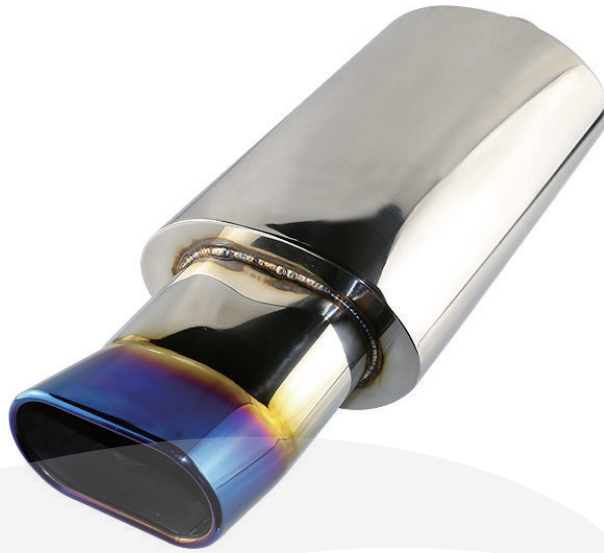
TZ401

IN	63 (2.5")
OUT	102 (4")
BODY	102 (4")
LEN	513



BZ80503

IN	63 (2.5")
OUT	138*76 (5.5"*3")
BODY	200*130 (8"*5")
LEN	550



BZ80503a

IN	63 (2.5")
OUT	89 (3.5")
BODY	200*130 (8"*5")
LEN	550*530



BZ80503b

IN	63 (2.5")
OUT	76 (3")
BODY	200*130 (8"*5")
LEN	550



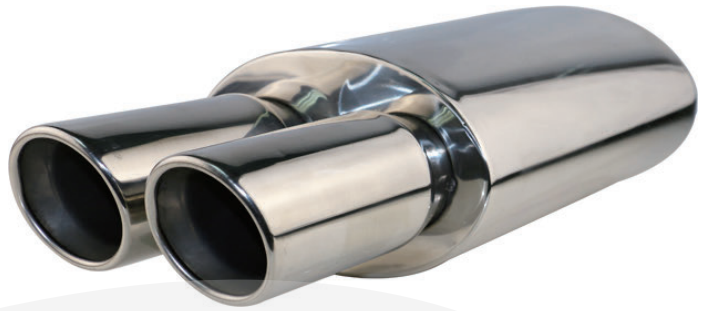
BZ80503c

IN 63 (2.5")

OUT 76 (3")

BODY 200*130 (8"*5")

LEN 520*500



BZ80503d

IN 63 (2.5")

OUT 76 (3")

BODY 200*130 (8"*5")

LEN 520

BZ80503e

IN 63 (2.5")

OUT 76 (3")

BODY 200*130 (8"*5")

LEN 550



BZ80503f

IN	63 (2.5")
OUT	138*76 (5.5"*3")
BODY	200*130 (8"*5")
LEN	550



BZ80503g

IN	63 (2.5")
OUT	138*76 (5.5"*3")
BODY	200*130 (8"*5")
LEN	550



BZ80503h

IN	63 (2.5")
OUT	76 (3")
BODY	200*130 (8"*5")
LEN	520*500





CODE	IN	OUT	BODY	LEN
BZ60403	63(2.5")	75*105	102*150(4"*6")	425
BZ60403a	76(3")	75*105	102*150(4"*6")	425



BZ55301

IN	51 (2")
OUT	75*140
BODY	75*140(3"*5.5")
LEN	390



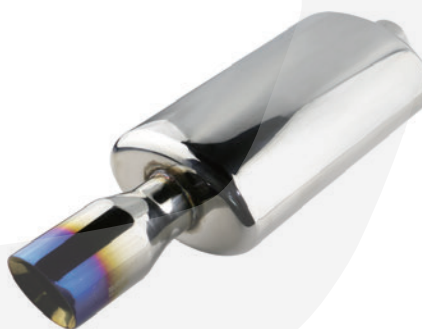
BZ60403b

IN	63 (2.5")
OUT	75*105
BODY	102*150(4"*6")
LEN	425



BZ80502

IN	63 (2.5")
OUT	135*70
BODY	200*130(8"*5")
LEN	550



BZ80502b

IN	63 (2.5")
OUT	89 (3.5")
BODY	200*130(8"*5")
LEN	550*530



BZ80502c

IN	51 (2")
OUT	51 (2")
BODY	200*130(8"*5")
LEN	550



BZ80506

IN	63 (2.5")
OUT	76 (3")
BODY	200*130(8"*5")
LEN	580*560





VAV01

VAV03

CODE	IN	OUT	BODY	LEN
BX80506	63 (2.5")	63 (2.5")	215*152 (8.5"*6")	660
BX80506a	76 (3")	76 (3")	215*152 (8.5"*6")	660



BZ85606

IN	63 (2.5")
OUT	89 (3.5")
BODY	213*153(8.5"*6")
LEN	500



BZ90403b

IN	63 (2.5")
OUT	102 (4")
BODY	230*102(9"*4")
LEN	580



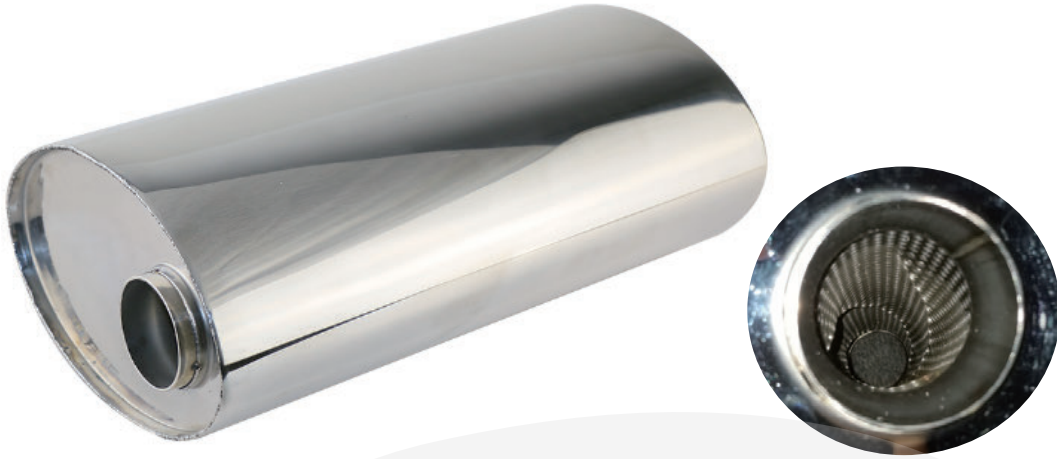
BZ110701

IN	63 (2.5")
OUT	89 (3.5")
BODY	275*170(11"*7")
LEN	550

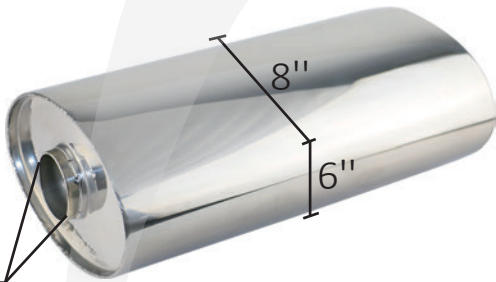


BZ110701a

IN	63 (2.5")
OUT	89 (3.5") Rolled
BODY	275*170(11"*7")
LEN	550

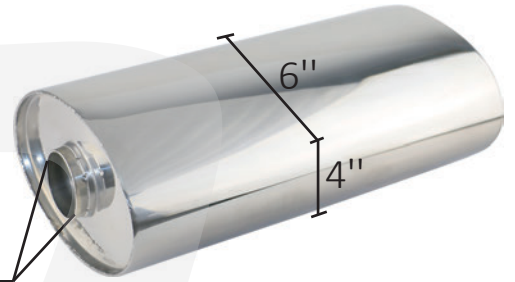


51 (2")
63 (2.5")
76 (3")

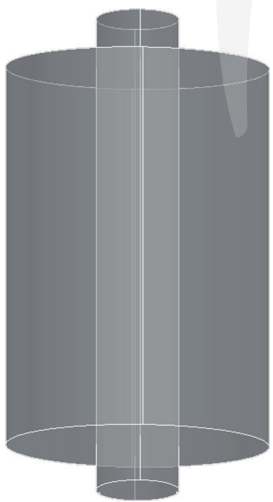


BL80501

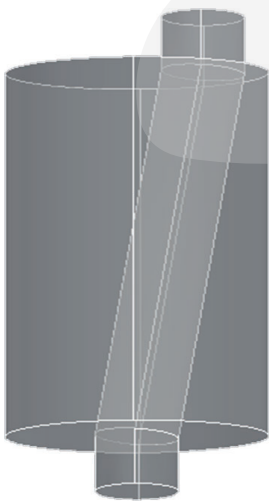
51 (2")
63 (2.5")
76 (3")



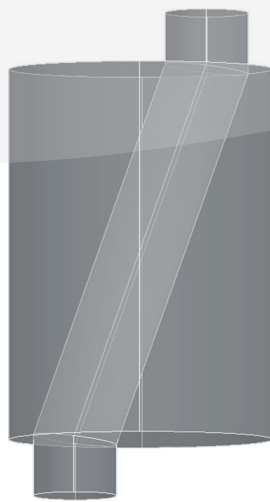
BL60401



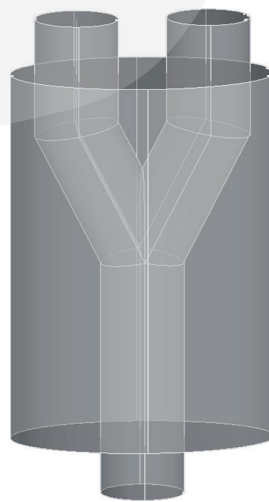
a



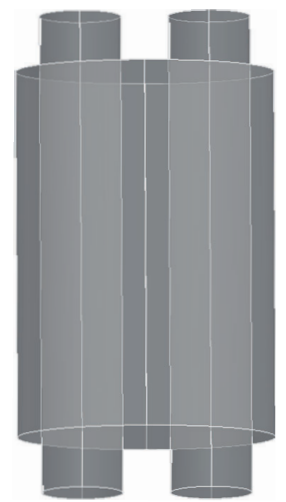
b



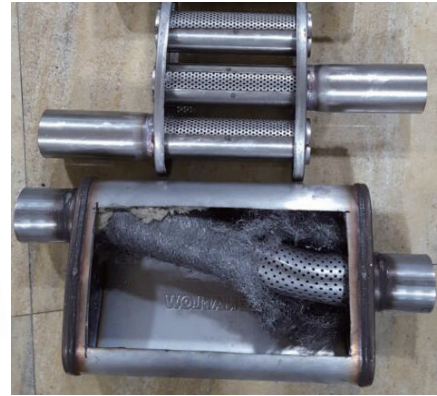
c



d



e



CODE	IN	OUT	BODY	LEN
-------------	-----------	------------	-------------	------------

BZ90401	63 (2.5")	63 (2.5")	230*105 (9"*4")	500
BZ90401a	76 (3")	76 (3")	230*105 (9"*4")	500



CODE	IN	OUT	BODY	LEN
-------------	-----------	------------	-------------	------------

BZ90403	63 (2.5")	63 (2.5")	230*105 (9"*4") L:400	500
BZ90403a	63 (2.5")	63 (2.5")	230*105 (9"*4") L:200	500



CODE	IN	OUT	BODY	LEN
-------------	-----------	------------	-------------	------------

BZ65453	51(2")	51(2")	114*160(4.5"*6.5")	130
BZ65453a	63(2.5")	63(2.5")	114*160(4.5"*6.5")	210



CODE	IN	OUT	BODY
ZZ401	51 (2")	51 (2")	102 (4")*300
ZZ401a	51 (2")	51 (2")	102 (4")*200
ZZ401b	51 (2")	51 (2")	102 (4")*350
ZZ401c	63 (2.5")	63 (2.5")	102 (4")*110
ZZ401d	63 (2.5")	63 (2.5")	102 (4")*160
ZZ401e	63 (2.5")	63 (2.5")	102 (4")*300
ZZ451	51 (2")	51 (2")	114 (4.5")*300
ZZ451a	63 (2.5")	63 (2.5")	114 (4.5")*300
ZZ451b	76 (3")	76 (3")	114 (4.5")*300
ZZ501	76 (3")	76 (3")	127 (5")*300
ZZ501a	63 (2.5")	63 (2.5")	127 (5")*300



CODE	IN	OUT	BODY
ZZ407	63 (2.5")	63 (2.5")	102 (4")*480
ZZ407a	63 (2.5")	63 (2.5")	102 (4")*325
ZZ407b	51 (2")	51 (2")	102 (4")*275
ZZ407c	63 (2.5")	63 (2.5")	102 (4")*275





ZL401

IN	63 (2.5")
OUT	63 (2.5")
BODY	102 (4")*300
LEN	400 (16")



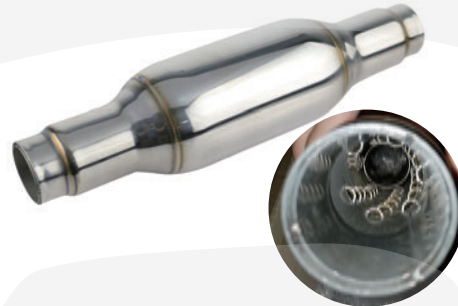
ZL402

IN	58 (2.25")
OUT	58 (2.25")
BODY	102 (4")*300
LEN	400 (16")



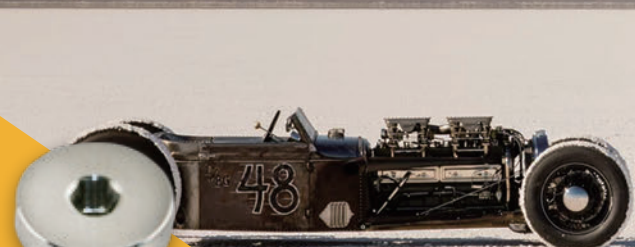
ZL407

IN	51 (2")
OUT	51 (2")
BODY	102 (4")*200
LEN	400 (16")



ZL407a

IN	51 (2")
OUT	51 (2")
BODY	102 (4")*250
LEN	450 (18")



Mercedes-Benz Catalytic Converter
CLA 250



Mercedes-Benz Catalytic Converter
GLE 320



Mercedes-Benz Catalytic Converter
ML400-CLASS

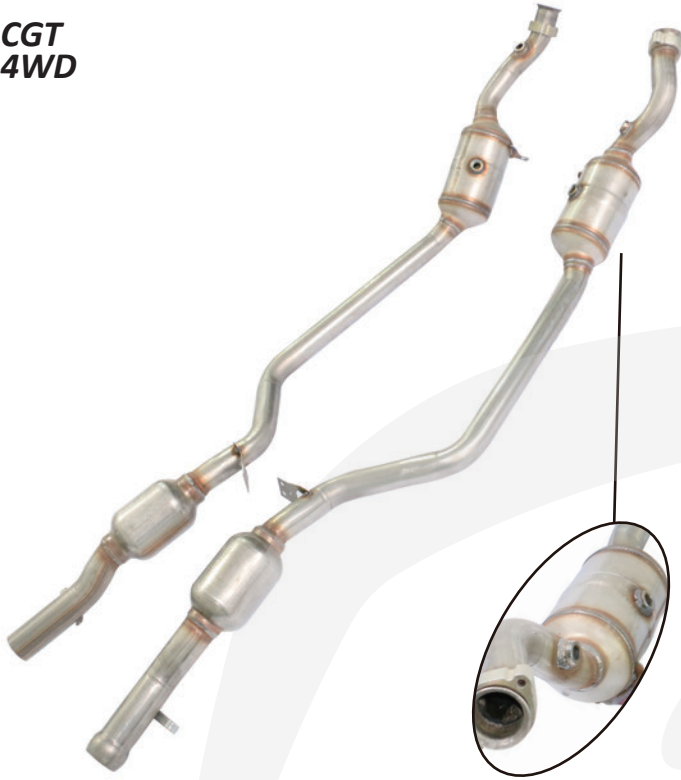


Mercedes-Benz Catalytic Converter
GLS 218



Mercedes-Benz Catalytic Converter

CGT
4WD



Mercedes-Benz Catalytic Converter

E260,E200,C260,C200



Mercedes-Benz Catalytic Converter

4 DOOR SEDAN W212
E350
E550 SPORT



Mercedes-Benz Catalytic Converter

Viano



Mercedes-Benz Catalytic Converter

ML 350 164 Chassis



Mercedes-Benz Catalytic Converter

GL350 3.0L V6
W164 Chassis
Diesel Oil



Mercedes-Benz Catalytic Converter

GL-Class W166
GLE W166
Diesel Oil



Mercedes-Benz Catalytic Converter

M-Class W166
GLE W166



Mercedes-Benz Catalytic Converter

**S350 W221
4WD**



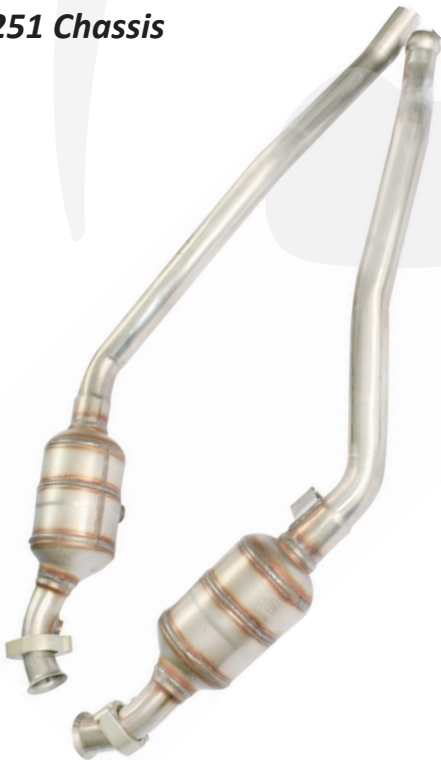
Mercedes-Benz Catalytic Converter

**S-KLASSE W221
S500 W216 CL**



Mercedes-Benz Catalytic Converter

R350 251 Chassis



Mercedes-Benz Catalytic Converter

R500 251 Chassis



Mercedes-Benz Catalytic Converter
S-Klasse W221



Mercedes-Benz Catalytic Converter
ML450,G500



Mercedes-Benz Catalytic Converter
SPRINTER 313 DPF Diesel Oil



Mercedes-Benz Exhaust Tips
Brabus



BMW Catalytic Converter
F30,328i



BMW Catalytic Converter
1 3 SERIES 16i 18i 20i F20 F21 F30 F31



BMW Catalytic Converter
F22 F23 F30 F32 F33 F34 F36



BMW Catalytic Converter
M2



BMW Catalytic Converter
M2 335i



BMW Catalytic Converter
F30 320i



BMW Catalytic Converter
E60



BMW Catalytic Converter
E60



BMW Catalytic Converter

525,740 F18(China) Chassis
300cell(Modification)



BMW Catalytic Converter

750i, 750Li, 750xi, 750lxi.
550i, 550xi. 550i GT.
X6. X5. 4.4L



BMW Catalytic Converter

760Li



BMW Catalytic Converter

1,2,3,4,7 Series



BMW Catalytic Converter
MINI



BMW Catalytic Converter
E84 F25 F26 X1



BMW Catalytic Converter
Active Hybrid 535i



BMW Catalytic Converter
X5 E70 Chassis



BMW Catalytic Converter

135i series E88/E82
335i series E90/E92/E93



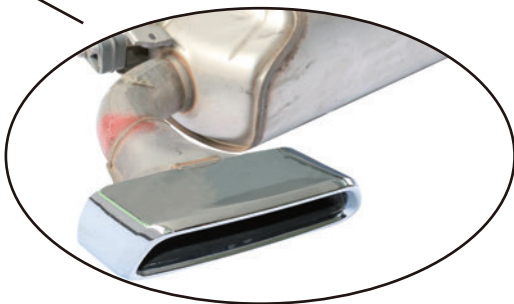
BMW Pipe

F30 320i



BMW End Silencer

530i 530iX W/M Sport



BMW End Silencer

X1
Modified into 2 Outlets



BMW End Silencer

X5
Modified into ///M



BMW Silencer

5 Series
(Modification)



BMW Silencer

730
Modified into 740i, 740li, 740Li xDrive



BMW Exhaust tips

5 Series
F10 535i /535i xDrive 3.0L
F11 F18 550i 560i



BMW Exhaust tips

7 Series
740i F01 4 Door
750



BMW Exhaust tips

X1



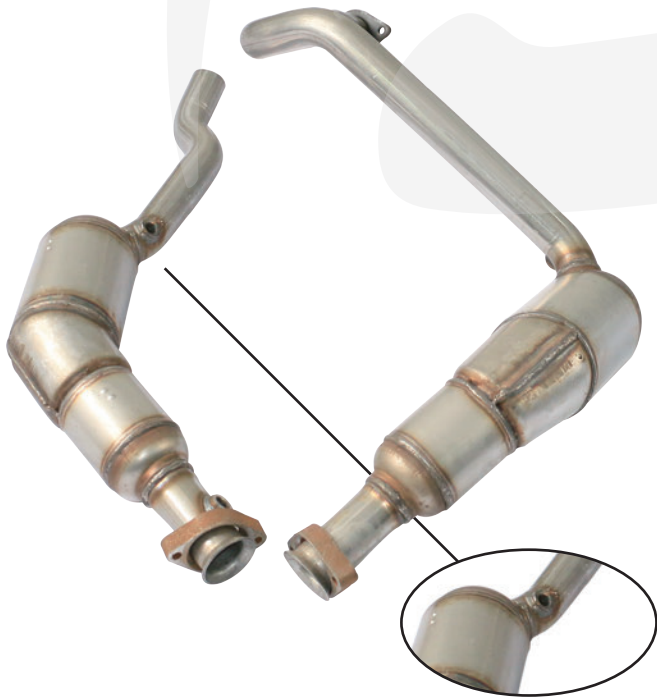
Land Rover Catalytic Converter
LR4. 3.0L V6 - Gas



Land Rover Catalytic Converter
5.0L V8 Front



Discovery Catalytic Converter
3,4



Discovery Catalytic Converter
5.0t (US)



Range Rover Catalytic Converter
HSE 5.0L V8 - Gas



Range Rover Catalytic Converter
5.0t (US)



Range Rover Catalytic Converter
Sport L494 3.0L V6



Discovery Catalytic Converter
Sport 2.0T,
Freelander LR2 HSE 2.0L L4
Evoque 2.0L L4



Range Rover Catalytic Converter

**Vogue 4 L405
Diesel Oil**



Range Rover Catalytic Converter

Diesel Oil



Range Rover Exhaust Tips

(2017)



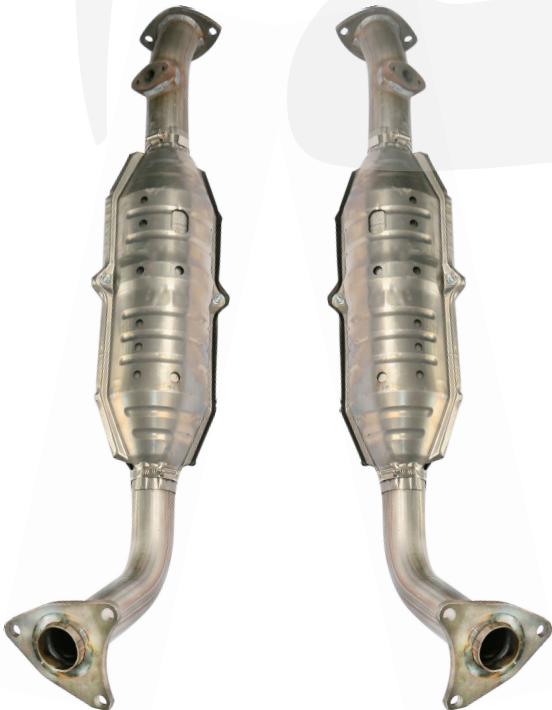
Toyota Catalytic Converter
Highlander



Toyota Catalytic Converter
Camary 2.4L
Middle



Toyota Catalytic Converter
Lexus Lx470 、 2004 Toyota Land Cruiser



Toyota Silencer
RAV 4 II
Middle



Toyota Silencer
Camry HV(NAP)



Toyota(GAC) Rear muffler
Highlander 2.0t



Toyota Middle Silencer
RAV 4



Toyota Middle Silencer
RAV 4 III 2.0
4WD



Toyota Middle Silencer
RAV 4 III 2.5



Toyota Middle Silencer
Land Cruiser Prado
2TRFE TRJ150W, TRJ150, TRJ150L



Toyota Middle Silencer
Land Cruiser Prado
1GRFE GRJ150, GRJ150L,
GRJ150W, GRJ151, GRJ151W



Toyota Middle Silencer
Land Cruiser 4500(4.5)



Toyota Middle Silencer
Land Cruoser 4700CC



Toyota Middle Silencer
*Land Cruoser Prado
1GRFE,GRJ125 1GRFE,GRJ125,
4FC 1GRFE,GRJ125,5FC*



Toyota Middle Silencer
Land Cruoser 4700



Toyota Middle Silencer
Sequioa



Toyota Middle Silencer
Tundra



Toyota Middle Silencer
Lexus LX450d,LX460,LX570, Land Cruiser



Toyota Middle Silencer
Lexus LX450d,LX460,LX570, Land Cruiser



Toyota Rear muffler
Camry



Toyota Rear Muffler
RAV 4



Toyota Rear Muffler
RAV 4 III 2.0
4WD



Toyota Rear Muffler
RAV 4, ASA42, ASA44, ASA42W
(2013)



Toyota Rear Muffler
Land Cruiser Prado 4000CC



Toyota Rear Muffler
4700



Toyota Rear muffler
Land Cruiser 100
4200CC,4500CC,4700CC,
Lx470 4700CC



Toyota End Pipe
Land Cruiser Prado 2.7



Toyota End Pipe
Tundra



Audi
S3

Catalytic Converter



Audi
A6L
(2016-2018)

Exhaust Tip



Audi
A3

Catalytic Converter



Volkswagen Catalytic Converter

GOLF VII 5G1, BE1, BE2, BQ1, BA5



Volkswagen Catalytic Converter

GOLF VII 5G1, BE1, BE2, BQ1, BA5

Audi A3

Seat Leon 5F1, 5F_, 5F8

Skoda Octavia III 5E3, 5E5



Volkswagen Catalytic Converter

Sagitar 1.4t



Volkswagen Catalytic Converter

Tiguan L



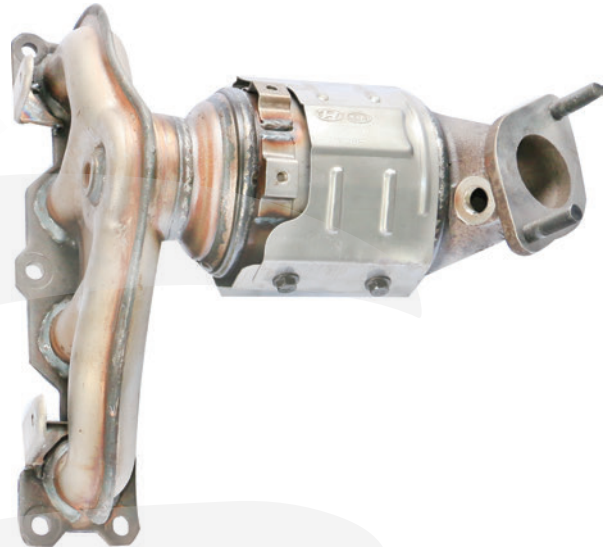
HYUNDAI Catalytic Converter

IX35,Santa Fe&Sorento
Middle
(RUSSIA)



HYUNDAI Catalytic Converter

IX35,Santa Fe&Sorento
Front
(RUSSIA)

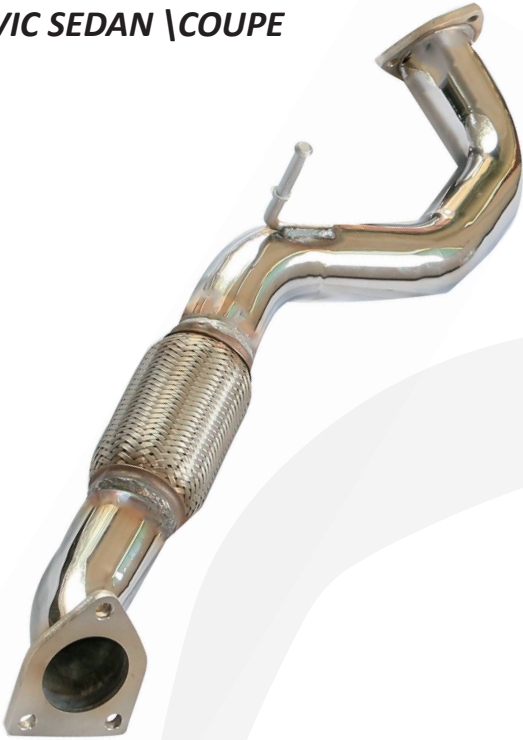


HYUNDAI Catalytic Converter

IX35,Santa Fe&Sorento
Front & Middle
(RUSSIA)



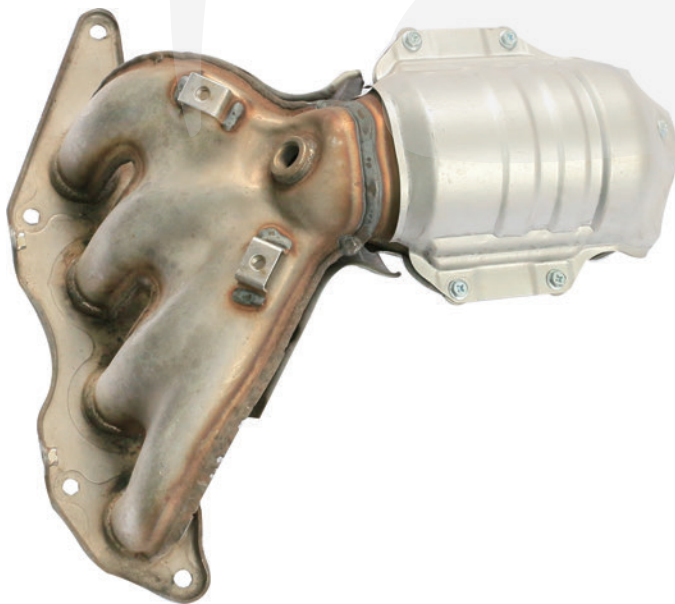
Honda End Pipe
CIVIC SEDAN \ COUPE



Chevrolet Silencer
Captiva Middle



MITSUBISHI Catalytic Converter
Galant



Ford Catalytic Converter
Mondeo 1.6T



KIA Rear muffler
Sportage



Daewoo Rear muffler
Nexia 114



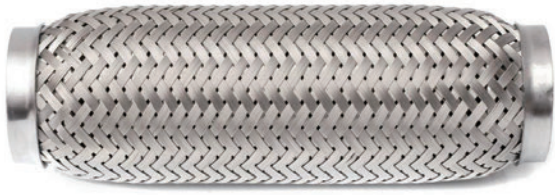
LANDWIND Rear muffler
Fashion



Dongfeng Rear muffler
Joyear



Flexible pipe



Tri Flange



Oval Flange



Donut Flange



Muffler Hanger



Basalt Fiber Exhaust Wrap



X-Pipe & Y-Pipe



Elbows





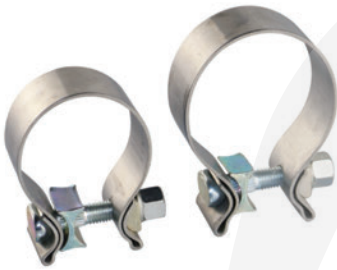
Clamp



T-Clamp



U-Clamp



O-Clamp



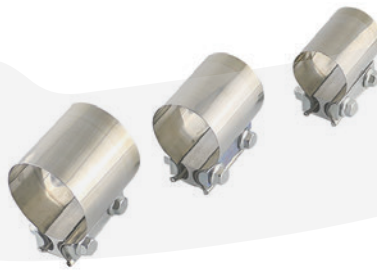
V-Clamp



M-Clamp



P-Clamp



P-Clamp



Before installing

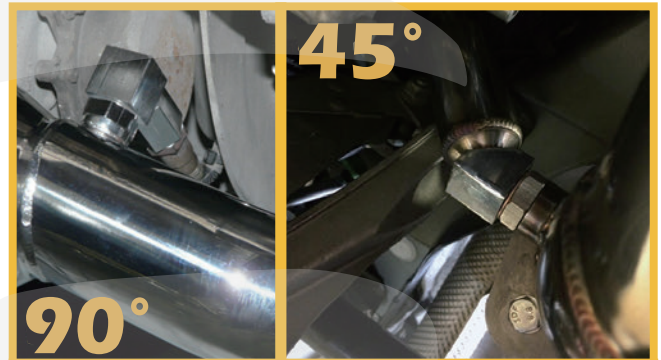


After Installing



45 degree

with catalytic



90°

with catalytic



180°

with catalytic



SS04



SS05



SS01



SS02

without catalytic

matel catalytic ✓

ceremic catalytic ✗

bung and plug fitting



SS08



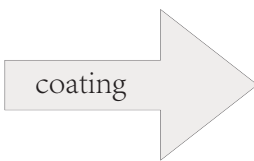
SS09



SS10



SS11



Empty Catalytic

Precious metal coated

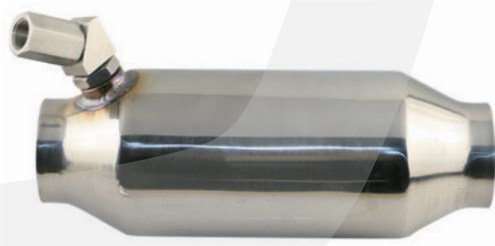
We can make Euro 2,3,4,5 and mesh 200cpsi,300cpsi,400cpsi,as you wish



CODE	IN	OUT	BODY	LEN	
MC02	63(2.5")	63(2.5")	102(4")	260	Euro 2
MC03	63(2.5")	63(2.5")	102(4")	260	Euro 3
MC05	63(2.5")	63(2.5")	102(4")	260	Euro 5

MC03 nut

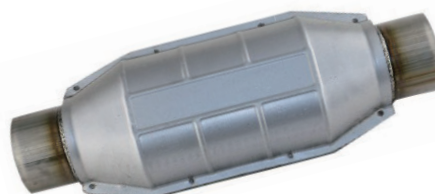
IN	63 (2.5")
OUT	63 (2.5")
BODY	102(4")
LEN	270



Ceramic catalytic

UC01

IN	68 (2 3/5")
OUT	68 (2 3/5")
BODY	114*130(4.5"*5")
LEN	376



Ceramic catalytic

OUC01

IN	82 (3 1/5")
OUT	82 (3 1/5")
BODY	162*100
LEN	400



Ceramic catalytic

UC02

IN	54 (2 1/10")
OUT	54 (2 1/10")
BODY	114*130(4.5"*5")
LEN	376



Ceramic catalytic

UC03

IN	54 (2 1/10")
OUT	54 (2 1/10")
BODY	104*130(4"*5")
LEN	354

VAV01



VAV02



VAV03



VAV04



VAV05



VAV06



VAV07

