

# Air pump



25 ( L ) \* 5.6 ( M ) \* 4.7 ( H ) CM

# Specifications

Specifications				Product configuration
Product name	Electric portable inflator	Product item	P001	1. Inflatable tube*1  2. Pump mouth*1  3. Adapter  4. Data cable/cigarette lighter cable*1 (optional)  5. Bag*1
Product material	ABS	Car power input	12V 3A	
Display screen	HD LCD color screen display	Input voltage	Charger 5V/2A	
Product size	25*5.6*4.7cm	Working current	1-5A	
Color box size	28.3*8.5*7.2cm	Maximum current	≤5A	
Outer carton size	45*33*30cm	No-load current	≤2A	
Product weight	700g	battery capacity	1200Am 12.4V	
Gross weight	13.1kg	Operating temperature	-20℃~70℃	
Packing QTY	20pcs	charging method	Micro USB	
Style/color	Black	Charging time	About 2 hours	
Cylinder	15 single cylinder	Emergency lighting	80 LM for 10 hours	
Air efficiency	Charge 1.95 mountain tires for 2 minutes; car inflates from 0-2.5bar for 15 minutes			
Accessible pressure	150PSI/10.3BAR/990KPA/10.5KG/CM			
Product function	Car, bicycle, motorcycle tires, balls, inflatable toys, etc., night lighting			

## Steps for usage

1. Long press the power button, the LCD screen starts to display
2. Press the U key to switch the four units of PSI, BAR, KAP, KG/CM, and select the unit you want
3. Press "+" and "-" to set the required air pressure value, the pressure value will flash for 2 seconds, and it will be set automatically, or press the power switch to start inflation
4. When the inflation pressure reaches the pressure value you set, the smart inflator will automatically stop the inflation work immediately, but the LED light is still on, and then press the power switch to turn the light off.
5. Long press U key: turn on the light

Note: You need to pause for a while before inflating for 10 minutes.



## charging method

Fully charge the battery through the USB cable. When the battery level shows a red light, it means it needs to be charged, and a green light shows it is full.

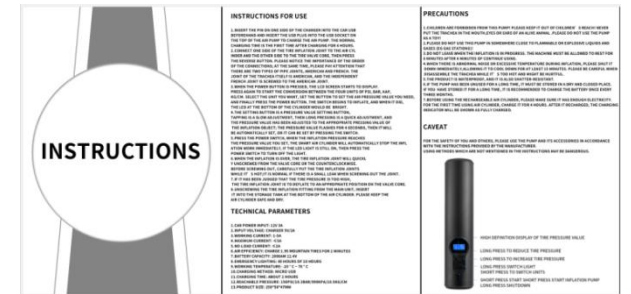
# Parts list

The product has the following 2 specifications:

- **Wireless model (built-in battery, 1200MA battery)**
- **Wired model (with cigarette lighter cord, without battery)**



Optional



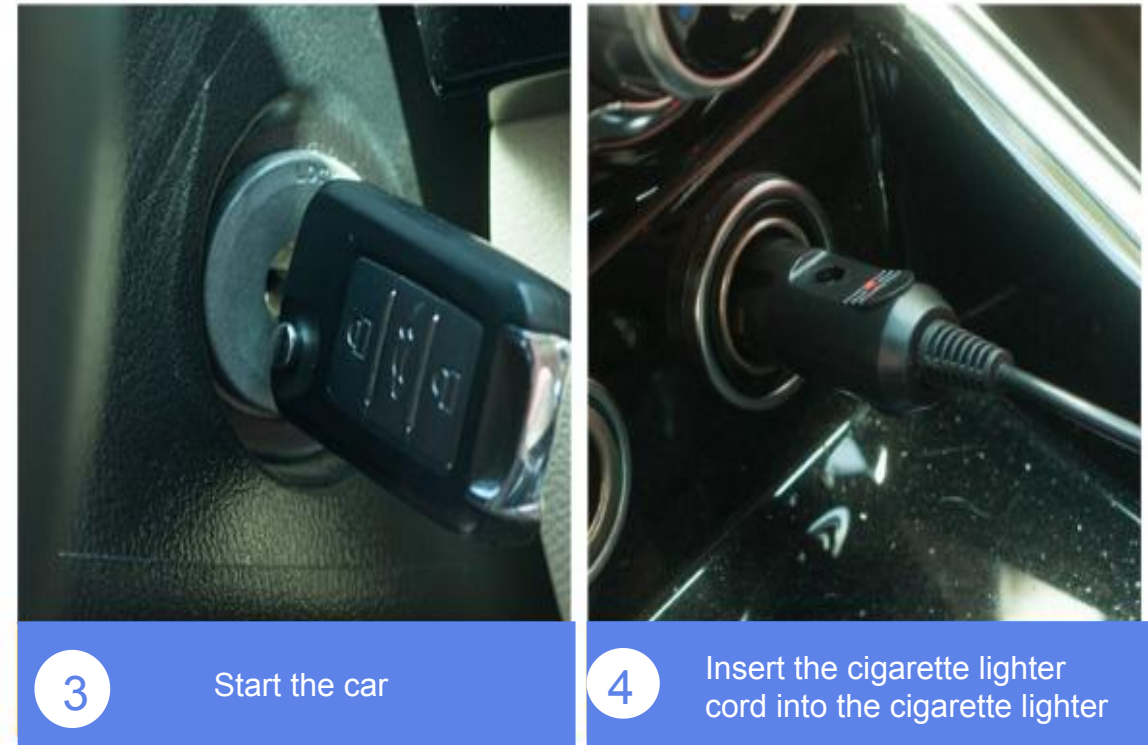
# How to use

## How to use wireless models



Built-in battery: 1200MA

## How to use wired models



Model without battery: Take electricity directly from the cigarette lighter port

## Scenes used



Car emergency pump



Pump up the motorboat



Inflatable sofa, etc.



Ready to pump at any time



Car tires



Inflatable ball



Swimming ring/motorboat



Bicycle tires



Motorcycle/Electric Vehicle Tires



Children's inflatable toys

It is suitable for inflating such as tires, balls, children's toys, etc.



## Digital tire pressure

Screw the valve onto the car valve, the tire pressure can be monitored when the machine is powered on



## Preset tire pressure

Set the required tire pressure in advance, automatically stop when full, no need to stare at the tire pressure gauge



## Wireless inflatable

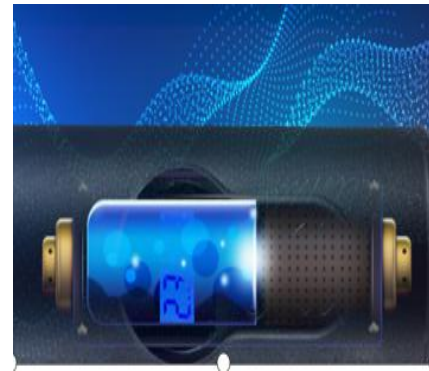


## Bottom heat dissipation design

More stable use and longer service life



## Blu-ray night vision



## Built-in battery

High-performance 18650 battery, Same as Tesla



## With lighting

6 bright light beads, the air pump with COB to solve your emergency needs

# Compare with tradition

## Traditional



Heavy, need to bring power cord, not convenient to carry

## P001 Air pump



6 cores

Digital tire pressure 、 Wireless inflatable 、 Blu-ray night vision、  
Preset pressure 、 With battery、 Small and portable



# Delivery time

Quantity	Delivery time
1-1000 Sets	1天 < 100 sets: 1 days 0.5K-1K: 3 days
1000-2000 Sets	6 days
3000-5000 Sets	10 days
10,000 or more	20 days

Reminder: The above delivery period is the estimated delivery period, The actual delivery date of the following order shall prevail.