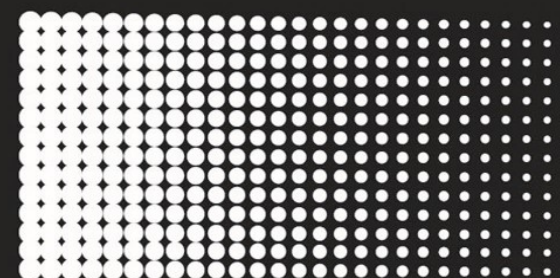


 ENGINEERED IN USA



**Flamingo**  
NOTHING BUT THE BEST



PROFESSIONAL  
CAR CARE  
PRODUCT MANUAL  
2019-2020





Wechat ID



**FLAMINGO CAR CARE TECH CO., LIMITED**

 ADD: RM521, Building No.3, Greenland CloudMetropolis, No.135 Huangyuan Road,  
Baiyun District, Guangzhou, China

 TEL: 0086-20-86215220  FAX: 0086-20-86215230

 [www.flamingocarcare.com](http://www.flamingocarcare.com)  [sales@flamingocarcare.com](mailto:sales@flamingocarcare.com)

# ABOUT US

Established in 2006, Flamingo Car Care Tech Co., Ltd is a professional manufacturer and exporter which co-founded by Guangdong Hosen New Material Industrial Co.,Ltd. and Flamingo Car Care Tech Inc., engaged in researching, producing and selling of car care products, spray paint, special coating, industrial cleaning and surface treating agent.

Through 12 years of precipitation and accumulation, Flamingo owns the profound understanding of car care products, world's leading research and development ability, excellent planning team and manufacturing experience for nearly a century, which prosper the selling of Flamingo car care products in North America. To make more car lovers around the world to recognize and use Flamingo products, Flamingo Car Care Tech Inc. collaborates with Guangdong Hosen New Material Industrial Co., Ltd for the establishment of research and production

base,promoting the Flamingo car care products to all over the world.

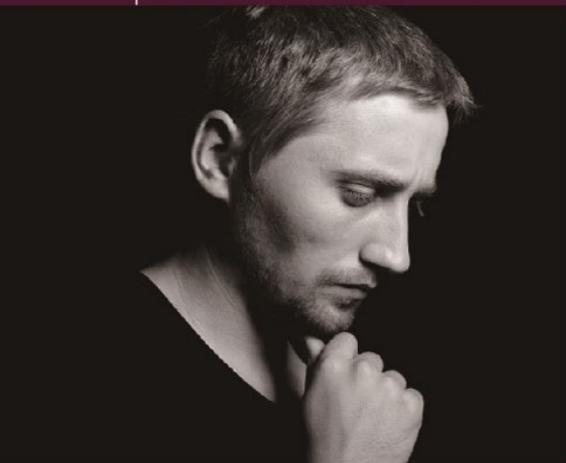
The new production base is located in Wengyuan, Guangdong. With beautiful environment and convenient transportation, it covers an area of nearly 30,000 square meters, equipped with advanced experimental and production equipment specially introduced from USA, German and Switzerland. At present it owns 6 fully-automatic production line for aerosol, 1 for paste filling,1 for liquid filling and 1 for emulsifying wax, with an daily production capacity of 150,000 cans. The production base has obtained the qualification for aerosol production in China, and passed the ISO9001 quality system certification and ISO14001 environment system certification. Owing leading USA technical standard and large production capacity, the base produces the Flamingo car care products, at the same maintains long-term friendly cooperative relations with many international well-known companies, and provides them with professional, complete OEM and ODM service.

## COMPANY PRINCIPLE

Innovation, Professional, Reliable,  
To Create Value for Customers!

[www.flamingocarcare.com](http://www.flamingocarcare.com)

# CERTIFICATION







# RUBBER SPRAY



### PEEL COAT

500MLX12PCS/5.88KGS/0.014CBM  
Product Code:F001

### RUBBER SPRAY

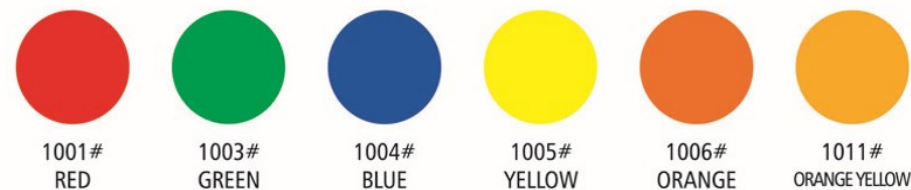
450MLX24PCS/10.44KGS/0.024CBM  
Product Code:F023



### COLOR SELECTION



### FLUORESCENT SELECTION





SPRAY PROTECTION



# SPRAY PROTECTION

39# BLACK	313# LIGHT RED	21# MEDIUM BLUE
33# BEIGE	31# SANDY BEIGE	37# FRESH GREEN
40# WHITE	1380# GRASS GREEN	89# GREY
305# LIGHT GREEN	?# CUSTOMIZATION	?# CUSTOMIZATION

SPRAY PROTECTION

500MLX12PCS/5.28KGS/0.014CBM  
Product Code:F2098



39# BLACK	6# ORANGE RED	21# MEDIUM BLUE
33# BEIGE	36# SILVER	27# LEAF GREEN
40# WHITE	5# PURPLE	41# CANARY YELLOW
?# CUSTOMIZATION	?# CUSTOMIZATION	?# CUSTOMIZATION

AUTO CLOTHES

500MLX12PCS/7.08KGS/0.017CBM  
Product Code:F064





CAR WAX

# CAR WAX



**Car Polish Wax**

230GX12PCS/4.20KGS/0.016CBM  
Product Code:F041



**Diamond Hard Wax**

180GX12PCS/3.60KGS/0.016CBM  
Product Code:F042



**Rubbing Compound**

230GX12PCS/4.20KGS/0.016CBM  
Product Code:F043



**Rubbing Compound**

946MLX12PCS/13.03KGS/0.023CBM  
Product Code:F050



**Polishing Glaze**

946MLX12PCS/12.79KGS/0.023CBM  
Product Code:F051



**Premium Coating Film**

946MLX12PCS/12.24KGS/0.023CBM  
Product Code:F052



**Headlight Restorer**

300MLX12PCS/3.70KGS/0.007CBM  
Product Code:F097



**Scratch Remover**

300MLX12PCS/3.70KGS/0.007CBM  
Product Code:F099



**Carnauba Car Wax**

300MLX12PCS/3.70KGS/0.007CBM  
Product Code:F103



**Hard Wax**

180GX12PCS/3.60KGS/0.016CBM  
Product Code:F087



**Crystal Liquid Wax**

473MLX12PCS/6.80KGS/0.01CBM  
Product Code:F040



**Spray Polish Wax**

450MLX24PCS/9.16KGS/0.024CBM  
Product Code:F044



# AIR FRESHENER



### Peach Perfume

330MLX24PCS/6.55KGS/0.019CBM  
Product Code:F011P



### Jasmine Perfume

330MLX24PCS/6.55KGS/0.019CBM  
Product Code:F011J



### Rose Perfume

330MLX24PCS/6.55KGS/0.019CBM  
Product Code:F011R



### Lemon Perfume

330MLX24PCS/6.55KGS/0.019CBM  
Product Code:F011L



### Strawberry Perfume

330MLX24PCS/6.55KGS/0.019CBM  
Product Code:F011S



### Apple Perfume

330MLX24PCS/6.55KGS/0.019CBM  
Product Code:F011A



### Air Freshener

50MLX144PCS/10.5KGS/0.03CBM  
Product Code:F102O

- F102O
- F102V
- F102P
- F102J
- F102S
- F102L





# INTERIOR & EXTERIOR

### Shines & Protects Protectant

118MLX24PCS/3.72KGS/0.008CBM  
Product Code:F025



### Shines & Protects Protectant

118MLX24SETS/4.86KGS/0.037CBM  
Product Code:F026



### Shines & Protects Protectant

295MLX24PCS/8.56KGS/0.016CBM  
Product Code:F027



### Shines & Protects Protectant

295MLX12SETS/5.34KGS/0.030CBM  
Product Code:F028



### Leather Polish

500MLX12PCS/7.34KGS/0.019CBM  
Product Code:F029



### Silicon Spray

450MLX24PCS/9.16KGS/0.024CBM  
Product Code:F090



INTERIOR & EXTERIOR

**Dashboard Polish**

450MLX24PCS/9.16KGS/0.024CBM

Product Code: **F004L**  
 F004S  
 F004P  
 F004J



**Dashboard Polish**

220MLX24PCS/4.60KGS/0.014CBM

Product Code: **F024P**  
 F024J  
 F024R  
 F024A  
 F024S  
 F024L



**Foam Cleaner**

650MLX12PCS/8.23KGS/0.018CBM

Product Code: **F002**



**Pitch Cleaner**

450MLX24PCS/9.16KGS/0.024CBM

Product Code: **F012**



**Sticker Remover**

450MLX24PCS/9.16KGS/0.024CBM

Product Code: **F013**



**Car Wash Shampoo**

500MLX24PCS/14.28KGS/0.025CBM

Product Code: **F030**



**Furniture Polish**

450MLX24PCS/9.16KGS/0.024CBM

Product Code: **F019**



**Foam Stop Fire**

500MLX12PCS/6.30KGS/0.019CBM

Product Code: **F018R**



**Wash Wax**

500MLX24PCS/14.28KGS/0.025CBM

Product Code: **F031**



**Car Wash Shampoo**

2LX6PCS/13.38KGS/0.023CBM

Product Code: **F068**



**Glass Cleaner**

500MLX12PCS/7.21KGS/0.019CBM

Product Code: **F086**



**Windshield Washer**

500MLX24PCS/14.28KGS/0.025CBM

Product Code: **F032**



**Wash Wax**

2LX6PCS/13.38KGS/0.023CBM

Product Code: **F069**



**Multi-Purpose Degreaser**

500MLX12PCS/7.21KGS/0.019CBM

Product Code: **F089**





# TIRE & WHEEL CARE



### Tire Foam

650MLX12PCS/7.73KGS/0.017CBM  
Product Code:F003



### Tire Care

650MLX12PCS/7.73KGS/0.017CBM  
Product Code:F003W



### Tire Shine

500MLX12PCS/5.88KGS/0.014CBM  
Product Code:F010



### Wheel & Rim Cleaner

500MLX12PCS/5.88KGS/0.014CBM  
Product Code:F014



### Tire Sealant & Inflator

450MLX24PCS/9.20KGS/0.022CBM  
Product Code:F015



### Tire Shine

500MLX12PCS/7.72KGS/0.019CBM  
Product Code:F085



### Tire Gel

500MLX24PCS/14.3KGS/0.025CBM  
Product Code:F035W



### Enhanced Tire Gel

500MLX24PCS/13.56KGS/0.025CBM  
Product Code:F035O



### Tire Gel Set

500MLX12SETS/8.68KGS/0.031CBM  
Product Code:F036



CAR PARTS CARE

**Carburetor & Choke Cleaner**

450MLX24PCS/9.64KGS/0.024CBM  
Product Code:F005



**Injector & Choke Cleaner**

220MLX24PCS/5.49KGS/0.014CBM  
450MLX24PCS/9.64KGS/0.024CBM  
Product Code:F088/F006



**Brake Cleaner**

450MLX24PCS/9.16KGS/0.024CBM  
Product Code:F016



**Engine Degreaser**

650MLX12PCS/8.21KGS/0.017CBM  
Product Code:F008



**Engine Degreaser (No Foam)**

500MLX12PCS/5.88KGS/0.014CBM  
Product Code:F009



**Starting Fluid**

450MLX24PCS/7.98KGS/0.022CBM  
Product Code:F017



**A/C Cleaner**

500MLX12PCS/5.93KGS/0.014CBM  
Product Code:F020



**Rubberized Undercoat**

500MLX12PCS/6.00KGS/0.014CBM  
Product Code:F021



**Contact Cleaner**

450MLX24PCS/9.16KGS/0.024CBM  
Product Code:F058



# CAR PARTS CARE



# COOLING SYSTEM CARE



### Radiator Flush

354MLX24PCS/9.85KGS/0.019CBM  
Product Code:F037



### Radiator Rust Preventive

354MLX24PCS/9.85KGS/0.019CBM  
Product Code:F038



### Radiator Leak Stopper

354MLX24PCS/9.85KGS/0.019CBM  
Product Code:F039



### Long Life Coolant

2LX6PCS/13.38KGS/0.023CBM  
Product Code:F033G



### Long Life Coolant

2LX6PCS/13.38KGS/0.023CBM  
Product Code:F033B



### Long Life Coolant

2LX6PCS/13.38KGS/0.023CBM  
Product Code:F033R



### Anti Freeze

2LX6PCS/13.38KGS/0.023CBM  
Product Code:F034



ADDITIVES

**Fuel Injector Cleaner**

250MLX24PCS/6.03KGS/0.017CBM  
Product Code:F045



**Diesel Fuel System Dredge**

250MLX24PCS/6.03KGS/0.017CBM  
Product Code:F046



**Octane Booster**

250MLX24PCS/6.03KGS/0.017CBM  
Product Code:F047



**Fuel Injector Cleaner**

354MLX24PCS/8.52KGS/0.024CBM  
Product Code:F053



**Diesel Fuel System Dredge**

354MLX24PCS/8.52KGS/0.024CBM  
Product Code:F054



**Octane Booster**

354MLX24PCS/8.52KGS/0.024CBM  
Product Code:F055



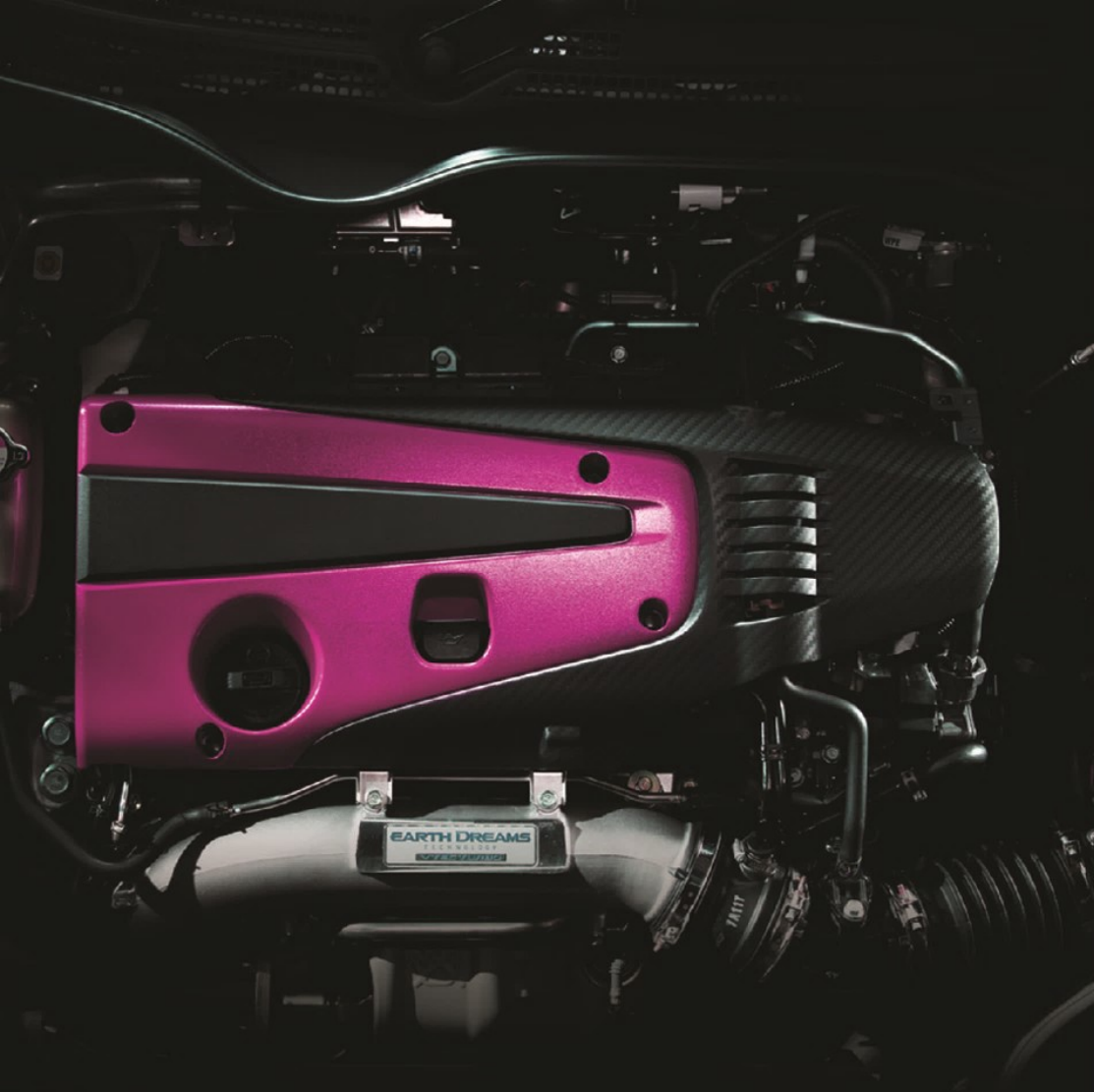
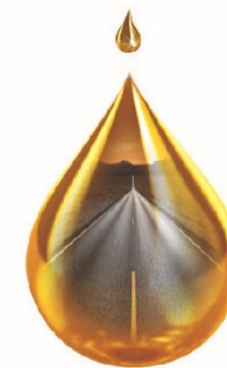
**Motor Flush**

443MLX24PCS/8.83KGS/0.019CBM  
Product Code:F048



**Super Oil Treatment**

443MLX24PCS/8.83KGS/0.019CBM  
Product Code:F049



# ADDITIVES



SPRAY PAINT

# SPRAY PAINT

**Spray Paint**

450MLX24PCS/8.36KGS/0.024CBM  
Product Code:F056



**Chrome Spray Paint**

330MLX12PCS/3.32KGS/0.009CBM  
Product Code:F057



**Paint Remover**

450MLX24PCS/9.16KGS/0.024CBM  
Product Code:F059



**Metallic Spray Paint**

450MLX24PCS/8.36KGS/0.024CBM  
Product Code:F060



**Fluorescent Spray Paint**

450MLX24PCS/8.36KGS/0.024CBM  
Product Code:F061



**High Temperature Resistant**

450MLX24PCS/8.36KGS/0.024CBM  
Product Code:F062



**Hammer Finish Spray Paint**

450MLX24PCS/8.36KGS/0.024CBM  
Product Code:F063

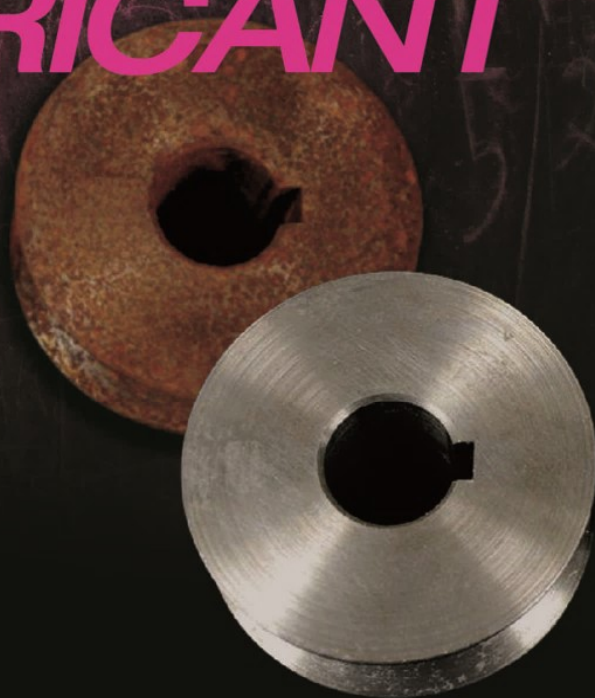


COLOR SELECTION

39# BLACK	14# JIANG RED	21# MEDIUM BLUE	6# ORANGE RED	30# PEACH RED
15# SKY BLUE	43# CREAM WHITE	27# LEAF GREEN	68# ORANGE YELLOW	37# FRESH GREEN
40# WHITE	5# PURPLE	41# CANARY YELLOW	22# MEDIUM GREY	65# APPLE GREEN



# DE-RUST LUBRICANT



## De-Rust Lubricant

450ML\*24PCS/8.98KGS/0.022CBM  
Product Code:F007

### FEATURES:

Adopting special silicone ingredient, DE-RUST & LUBRICANT can foam a protective film on the metallic surface so as to prevent the surface from contacting with moisture and air, thus avoid the surface from oxidizing and rusting. It is widely applied in the protection of precision components, electric fitting contacts, iron and steel parts as well as supersensitive components. With high permeating ability, it is commonly used in the maintenance of machines, armament, electric tools and precision instruments. It can stop squeaking of chairs, door hinges, metal gate and vehicle parts, at mean time, eliminating moistures so as to prevent the surface from corroding and making sure of its good lubricating performance.

## De-Rust Lubricant

300ML\*24PCS/5.65KGS/0.018CBM  
450ML\*24PCS/8.98KGS/0.022CBM  
Product Code:F082/F065

### FEATURES:

1. Stops Squeaks: Penetrates and lubricates hinges, castors, springs, taps, handles, windows, pedals and office chairs. 2. Drives Out Moisture: Drives out water on metal surfaces e.g. electrical contacts, car ignitions, tools (incl. garden). Motorcycle engines and outboard motors. 3. Cleans And Protects: Dissolves crayon marks, grease, tar, gum, adhesives. Loosens hard water deposits. Leaves protective film against rust and corrosion on bikes, prams, chrome parts, motorcycles, outboard motors and tools. 4. Loosens Rusted Parts: Thoroughly penetrates and loosens rusted, corroded and seized nuts, bolts, controls, cables and other fasteners. 5. Frees Sticky Mechanisms: Un-jams and lubricates door locks, zippers, sewing machines, controls, linkages and cables.





# NANO CERAMIC COATING



## Nano Ceramic Coating Kit

(30ML+50MLx2)\*12PCS/7.68KGS/0.03CBM  
Product Code:F101S

### APPLICATING CAPACITY:

Bottle A : Degreasing Agent      Bottle B : Nano Ceramic Coating  
Bottle C: Polishing Protectant

### USAGES:

A. Wash the car with F030 Car Shampoo, remove all dirties on the paint surface carefully. B. Use polishing machine with F050 Rubbing Compound/ F051 Polishing glaze/F052 Premium Coating Film(subject to paint conditions, new car use F052 only), then wash and dry the car. **VERY IMPORTANT** with this step to make sure the paint in perfect gloss. C. Spray Degreasing agent(Bottle A) on the car paint to remove grease, and wash by clean water then dry by air blower. D. Visual check with all place, ensure no any dust, scratch on the paint. E. Pour the NANO CERAMIC COATING(Bottle B) on the matched sponge and small cloth with moderate amounts, then apply it to the surface equally in the order of up-down and left-right. If uneven lines left in plating period, so will left after plating. So please be sure to apply evenly, **DO NOT POUR NANO CERAMIC COATING ON THE CAR DIRECTLY.** Please operate with small area(50\*50cm) each time, one piece finished then start another. Avoid large-area operation. F. Nano Ceramic Coating operating time as below, for reference only:

Temperature	<10°C	10-15°C	15-20°C	20-25°C	>25°C
Solidify time(minutes)	15	10	5	3-5	1-3
Operating time(minutes)	10-15	5-10	3-5	2-3	1

G. After complete the coating with all paint surface, wait 1 hour to let coating film dry. H. Spray POLISHING PROTECTANT (Bottle C) on dry coating film and polish it equally. I. Visual Check with all coating film to avoid faulty area. J. Please wait 2 hours after all operation, to let it crystallize completely for the best effect. The car can be moved after waiting time. But do not wash it or pour water on it in 3 days. In case of water contact, dry off immediately. K. Flamingo advise to use POLISHING PROTECTANT(Bottle C) in 2nd time after 3 months.





T-Shirt



Display Stand



Ball-pen



Notebook



Stickers



Mouse pad



Umbrella



Bumbarsoll



Flamingo Car Care Tech. Co.,Ltd., your reliable partner !  
We're looking forward to building long-term business relationships with you !  
Now worldwide distributors wanted !!!



**CONSISTENT QUALITY**

- A. More than 12 years car care products exporting experience
- B. No.1 in velocity of development in this field
- C. All products engineered in USA
- D. Strict quality control system has been built based on cooperating with US market more than 10 years



**INNOVATION**

- A. Professional R&D team
- B. Innovation is our core culture
- C. Your new idea can be embraced any time



**COMPETITIVE PRICE**

- A. Good sense of controlling cost
- B. Long-term partner relationships with our suppliers



**ON TIME DELIVERY**

- A. Full experience in handling export trade
- B. Delivery date is confirmed by ERP system, which includes every relevant department on production capacity and quality control



**SERVICE**

- A. Offer customize service
- B. "Customers first" is our service tenet
- C. A good listener to your requirement
- D. Instant response