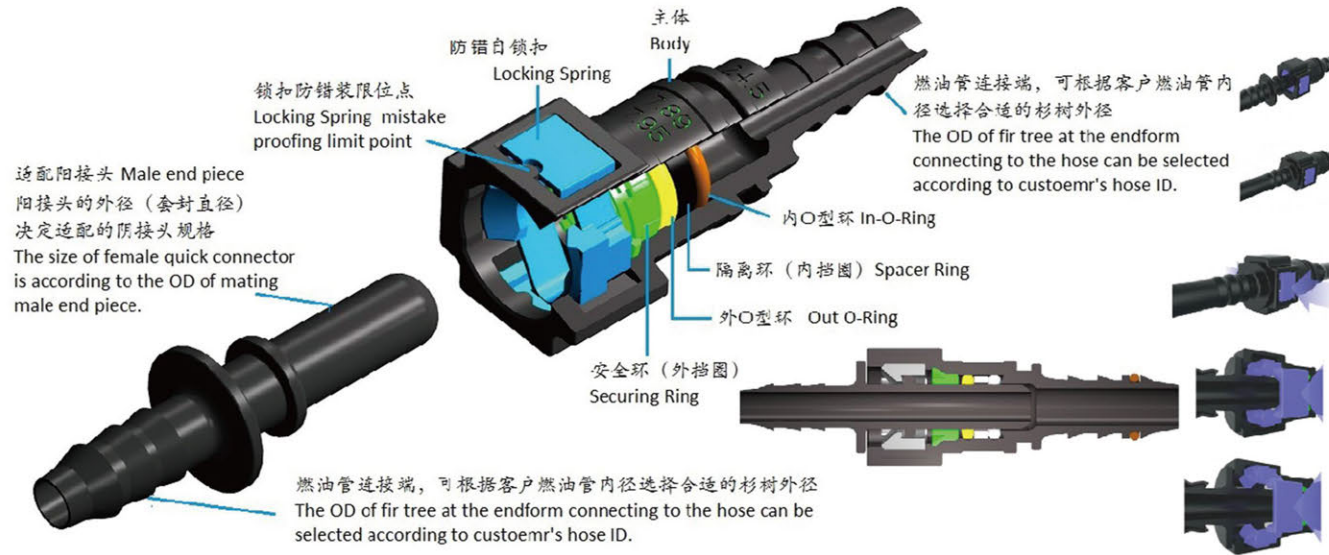


SAE J2044-2009

Product Range

• <i>Basic Instruction</i>	2
• <i>Quick Connectors</i>	3
• <i>Male end piece</i>	12
• <i>Plug & Safe Lock</i>	16
• <i>Hose Adaptors</i>	17
• <i>Hose & Hose Assembly</i>	21
• <i>Metal fittings</i>	23
• <i>Tools</i>	24

BASIC INSTRUCTION



Quick connector is made up of body, in O-ring, Out O-ring, spacer ring, securing ring and locking spring. When a mating tube end piece inserts the connector, as locking spring has certain elasticity, tie clip fastener to connect two connectors together and then pull back to assure a complete connection. **Notice, before re connection, the O ring should be lubricated with SAE 30th heavy oil.**

Working environment:

- A. Gasoline and diesel fuel delivery systems, Ethanol, methanol or natural gas delivery systems or their vapor venting or evaporative emission control systems.
- B. Operating pressure up to 500 Kpa, 5bar, (72 psig)
- C. Operating vacuum down to -50Kpa, -0.55 bar, (-7.2 psig)
- D. Operation temperature from -40°C (-104°F) to 115°C (239°F), short time 150°C

Different end form:



For nylon / rubber



For nylon / rubber



For rubber hose



For rubber hose

Liquid Fuel Quick Connectors

6.30 / 6.35 OR SAE 1/4"



A1

Ø 6.3 - ID3 - 180°
PA Tube 5 x1



A2

Ø 6.3 - ID3 - 90°
PA Tube 5 x1



A3

Ø 6.3 - ID6 - 180°
PA Tube 8 x1



A4

Ø 6.30 - ID6 - 90°
PA Tube 8 x1



A5

Ø 6.3 - ID6 - 180°
PA Tube 8 x1



A6

Ø 6.3 - ID6 - 90°
PA Tube 8 x1



A7

Ø 6.30 - ID8 - 180°
PA Tube 10 x1



A8

Ø 6.30 - ID8 - 90°
PA Tube 10 x1



A11

Ø 6.3 - ID4 - 180°
PA Tube 6 x1



A12

Ø 6.3 - ID4 - 90°
PA Tube 6 x1



A18

Ø 6.30 - ID7.5 - 180°
Hose ID 7.5



A19

Ø 6.30 - ID7.5 - 90°
Hose ID 7.5



A49

Ø 6.30
Blanking Cap

Liquid Fuel Quick Connectors

AlwaysTec

Professional Auto Parts Supplier

7.89 OR SAE 5/16" OR 8 Metric



B1

Ø 7.89 -ID6 - 180°
PA Tube 8 x 1



B2

Ø 7.89 -ID6 - 90°
PA Tube 8 x 1



B3

Ø 7.89 -ID6 - 180°
PA Tube 8 x 1



B4

Ø 7.89 -ID6 - 90°
PA Tube 8 x 1



B5

Ø 7.89 - 180°-ID7.5
Hose ID 7.5



B6

Ø 7.89 - 90°-ID7.5
Hose ID 7.5



B8

Ø 7.89 - ID8 - 180°
PA Tube 10 x 1



B9

Ø 7.89 - ID8 - 90°
PA Tube 10 x 1



B13

Ø 7.89 -ID6-90°
PA Tube 8 x 1



B12

Ø 7.89-ID4 -90°
PA Tube 6 x 1



B11

Ø 7.89- ID4 -180°
PA Tube 6 x 1



B20

Ø 7.89 - ID6 -180°
PA Tube 6 x 1



B21

Ø 7.89 -ID5.5- 180°
Rubber hose ID 5.5



B22

Ø 7.89 - ID5 - 180°
PA Tube 7 x 1



B23

Ø 7.89 -ID3- 180°
PA Tube 5 x1



B24

Ø 7.89 - ID3 -90°
PA Tube 5 x1



B28

Ø 7.89 - ID5.5-180°
Hose ID 5.5



B29

Ø 7.89 - ID5.5-90°
Hose ID 5.5



B30

Ø 7.89 - ID6 -ID6
PA Tube 8 x 1, 8 x 1



B31

Ø 7.89- ID10 -180°
PA Tube 12.5 x1.25



B32

Ø 7.89 - ID10 -90°
PA Tube 12.5 x1.25



B33

Ø 7.89- ID7.5 -90°
Hose ID 7.5



B35

Ø 7.89 - ID5 -90°
PA Tube 7 x 1, 7 x 1



B49

Blanking Cap

7.89 OR SAE 5/16" OR 8 Metric



B7

Ø7.89 -ID6
180° & 90°

PA Tube 8 x 1



B10

Ø 7.89 -ID6- Ø 7.89

PA Tube 8 x 1



B14

Ø 7.89 -I D6- Ø 7.89(90°)

PA Tube 8 x 1



B15

Ø 7.89 - Ø 7.89- ID6(90°)

PA Tube 8 x 1



B16

Ø 7.89 - ID6-135°

PA Tube 8 x 1



B17

Ø 7.89 -ID6 -ID6

PA Tube 8 x 1 ,8 x 1



B18

Pressure regulator
Ø 7.89 - ID4 - 180°

PA Tube 6 x 1



B55

Ø 7.89 - ID10 - 90°

PA Tube 12.5 x 1.25



B58

Ø 7.89 - Ø7.89 - Ø7.89



B59

Ø 7.89 - Ø 7.89
- ID6

PA Tube 8 x 1



B60

Ø 7.89 -ID5- 90°

PA Tube 7 x 1



B61

Ø 7.89 -ID5 -135°

PA Tube 7 x 1



B62

Ø 7.89 -ID8- 135°

PA Tube 10 x 1

9.49 OR SAE 3/8"



D1
Ø 9.49 - ID6 - 180°
PA Tube 8 x 1



D2
Ø 9.49 - ID6 - 90°
PA Tube 8 x 1



D3
Ø 9.49 - ID8 - 180°
PA Tube 10 x 1



D4
Ø 9.49 - ID8 - 90°
PA Tube 10 x 1



D5
Ø 9.49 - ID6 - 90°
PA Tube 8 x 1



D6
Ø 9.49 - 180° - ID7.5
Rubber hose ID 7.5



D7
Ø 9.49 - 90° - ID7.5
Rubber hose ID 7.5



D8
Ø 9.49 - 180° - ID9.5
Rubber hose ID 9.5



D9
Ø 9.49 - ID4 - 180°
PA Tube 6 x 1



D10
Ø 9.49 - ID4 - 90°
PA Tube 6 x 1



D11
Ø 9.49 - 90° - ID9.5
Hose ID 9.5



D12
Ø 9.49 - ID8 - 180°
PA Tube 10 x 1



D13
Ø 9.49 - ID8 - 90°
PA Tube 10 x 1



D14
Ø 9.49 - ID14 - 180°
PA Tube 18 x 2



D15
Ø 9.49 - ID14 - 180°
PA Tube 18 x 2



D16 ★
Ø 9.49 - ID12 - 180°
PA Tube 15 x 1.5



D17 ★
Ø 9.49 - ID12 - 90°
PA Tube 15 x 1.5



D31
Ø 9.49 - 9.49 - 7.89 (90°)



D49
Blanking Cap



D56
Ø 9.49 - ID12 - 180°
PA Tube 15 x 1.5



D57
Ø 9.49 - ID12 - 90°
PA Tube 15 x 1.5



D20 ★
Ø 9.49 - ID10 - 180°
PA Tube 12.5 x 1.25



D21 ★
Ø 9.49 - ID10 - 90°
PA Tube 12.5 x 1.25

9.89 OR SAE 10



E1

Ø 9.89 -ID8- 180°
PA Tube 10 x 1



E2

Ø 9.89-ID8 - 90°
PA Tube 10 x 1



E3

Ø 9.89 -ID9 - 180°
PA Tube 12 x1.5



E4

Ø 9.89-ID10 - 90°
PA tube 12.5 x1.25



E5

Ø 9.89 - 90°-ID9.5
Rubber hose ID9.5



E6

Ø 9.89 - ID6- 180°
PA Tube 8 x 1



E7

Ø 9.89 - 180°-ID7.5
Hose ID 7.5



E8

Ø 9.89 - ID10- 180°
PA Tube 12.5 x 1.25



E9

Ø 9.89 - ID6- 90°
PA Tube 8 x 1



E10

Ø 9.89 - Ø 9.89- 180°
Senor Port



E12

Ø 9.89 -ID8- ID8
PA Tube 10 x 1,10 x 1



E15

Ø 9.89 -ID9.5- 180°
Hose ID 9.5



E51

Ø 9.89 -ID6- 90°
PA Tube 8 x 1



E52

Ø 9.89- ID8 - 90°
PA Tube 10 x 1



E53

Ø 9.89 -ID9.5- 180°
Hose ID 9.5



E55

Ø 9.89 -ID8 - 135°
PA Tube 10 x 1

11.80 OR SAE 12



G1

Ø 11.80 -ID10- 180°
PA Tube 12.5 x 1.25



G2

Ø 11.80 -ID10- 90°
PA Tube 12.5 x 1.25



G3

Ø 11.80 -ID14- 180°
PA Tube 18 x 2



G4

Ø 11.80 -ID9- 180°
PA Tube 12 x 1.5



G5

Ø 11.80 -ID9-90°
PA Tube 12 x 1.5



G36 ★

Ø 11.80 -ID10- 135°
PA Tube 10 x 1



G7

Ø 11.80 -ID12- 180°
PA Tube 15 x 1.5



G8

Ø 11.80 -ID8-180°
PA Tube 10 x 1



G9

Ø 11.80 -ID9- 90°
PA Tube 12 x 1.5



G49

Ø 11.80 -ID6- 135°
PA Tube 8 x 1



G51

Ø 11.80 - ID6 - 90°
PA Tube 8 x 1



G50

Ø 11.80 -ID9-180°
PA Tube 12 x 1.5



G52

Ø 11.80 -ID9-90°
PA Tube 12 x 1.5



G53

Ø 11.80 -ID6-180°
PA Tube 8 x 1



G55

Ø 11.80 -ID6-90°
PA Tube 8 x 1



G58

Ø 11.80 -ID8-180°
PA Tube 10 x 1



G59

Ø 11.80 -ID8-90°
PA Tube 10 x 1



G60 (Check Valve)

Ø11.80- 180°- ID11.5
Hose ID 11.5



G63

Ø 11.80 -ID12-180°
PA Tube 15 x 1.5



11.8-ID11-90

G64

Ø 11.80 -ID11 -90°
PA Tube 14 x 1.5



13.8
G65-ID11-135

G65

Ø 11.80 -ID11 -135°
PA Tube 14 x 1.5



G66

Ø 11.80 -ID12 -180°
PA Tube 15 x 1.5



G67

Ø 11.80 -ID12 -90°
PA Tube 15 x 1.5



G68 ★

Ø 11.80 -ID12 -135°
PA Tube 15 x 1.5

12.61 OR SAE 1/2"



G12

Ø12.61 -ID8 - 180°
PA Tube 10 x 1
or hose 3/8",10mm



G11

Ø12.61 -ID12 - 180°
PA Tube 15 x 1.5
or hose 1/2",14mm



G6

Ø12.61 -ID12 - 90°
PA Tube 15 x 1.5
or hose 1/2",14mm



G15

Ø12.61 -ID14 - 180°
PA Tube 18X2
or hose 5/8",16mm



G16

Ø12.61 -ID14 - 90°
PA Tube 18 x 2 or
or hose 5/8",16mm



G17

Ø12.61 -ID12 - 180°
PA Tube 16 x 2 or
or hose 1/2",14mm



G18

Ø12.61 -ID12 - 90°
PA Tube 16 x 2 or
or hose 1/2",14mm



G19

Ø12.61 -ID9 - 180°
PA Tube 12 x 1.5 or
hose 3/8",10mm



G20

Ø12.61 -ID9 - 90°
PA Tube 12 x 1.5



G21

Ø12.61 -ID6 - 180°
PA Tube 8 x 1



G31

Ø12.61 -ID12 - 180°
PA Tube 15 x 1.5
or hose 1/2",14mm



G32

Ø12.61 -ID12 - 90°
PA Tube 15 x 1.5
or hose 1/2",14mm



G186

Ø12.61 -ID10 - 180°
PA Tube 12.5 x 1.25
or hose 11.5 ,1/2



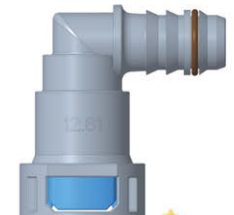
G187

Ø12.61 -ID10- 90°
PA Tube 12.5 x1.25
or hose 11.5 ,1/2



G188

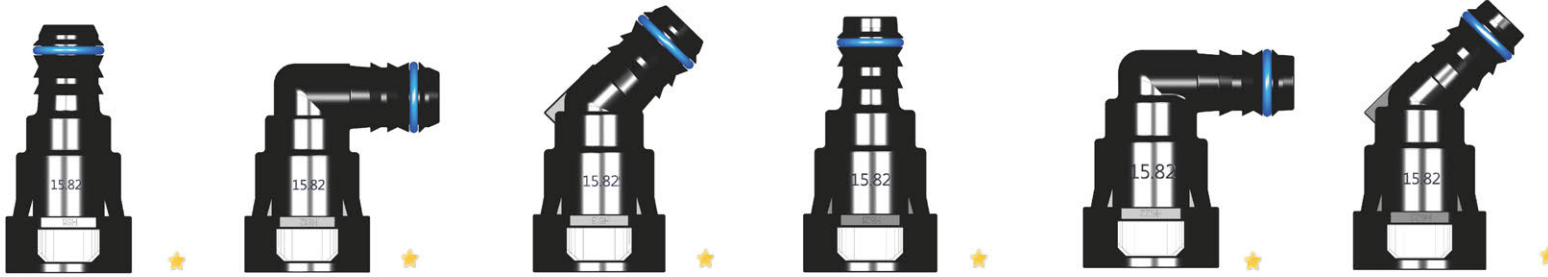
Ø12.61 -ID12 - 180°
PA Tube 15 x 1.5
or hose 1/2",14mm



G189

Ø12.61 -ID12 - 90°
PA Tube 15 x 1.5
or hose 1/2",14mm

15.82 OR SAE 5/8" OR 16 Metric



H611
Ø 15.82 -ID14 - 180°
PA Tube 18 x 2
or Hose 5/8",16mm

H612
Ø 15.82 -ID14 - 90°
PA Tube 18 x 2
or Hose 5/8",16mm

H613
Ø 15.82 -ID14 - 135°
PA Tube 18 x 2
or Hose 5/8",16mm

H621
Ø 15.82 -ID12 - 180°
PA Tube 15 x 1.5
or Hose 1/2",14mm

H622
Ø 15.82 -ID12 - 90°
PA Tube 15 x 1.5
or Hose 1/2",14mm

H623
Ø 15.82 -ID12 - 135°
PA Tube 15 x 1.5
or Hose 1/2",14mm



H1
Ø 15.82 -ID14 - 90°
PA Tube 18 x 2
or Hose 5/8",16mm

H2
Ø 15.82 -ID14 - 180°
PA Tube 18 x 2
or Hose 5/8",16mm

H3
Ø 15.82 - 180° - ID14
Hose ID 14

H4
Ø 15.82 -ID12- 180°
PA Tube 18 x 2
or Hose 5/8",16mm

H5
Ø 15.82 -ID12 - 90°
PA Tube 18 x 2
or Hose 5/8",16mm

H16
Ø 15.82 -ID14 - 135°
PA Tube 18 x 2
or Hose 5/8",16mm

H17
Ø 15.82 -ID14 -90°
HOSE 14 mm

H18
Ø 15.82 -ID14 - 135°
HOSE 14 mm

15.82 OR SAE 5/8" OR 16 Metric



H11

Ø 15.82 -ID12 - 180°
or Hose 1/2",14mm



H12

Ø 15.82 -ID12 - 90°
or Hose 1/2",14mm



H13

Ø 15.82 -ID12 - 135°
or Hose 1/2",14mm



H6

Ø 15.82 -ID14- 180°
PA Tube 18 x 2
or Hose 5/8",16mm



H7

Ø 15.82 - ID14 - 135°
PA Tube 18 x 2
or Hose 5/8",16mm



H8 (single O-ring)

Ø 15.82 -ID14- 135°
PA Tube 18 x 2
or Hose 5/8",16mm



H15

Ø 15.82 -ID14 - Ø 9.89
PA Tube 18 x 2
or Hose 5/8",16mm

17.5



H20

Ø17.5 -ID14- 180°
PA Tube 18 x 2



H21

Ø17.5 -ID14- 90°
PA Tube 18 x 2



H22

Ø17.5 -ID6-ID14
PA Tube 8 x 1,18 X 2

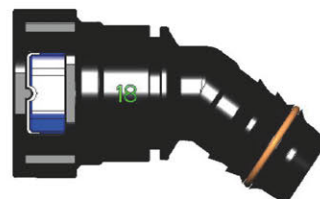
18.0



P1
Ø 18 -ID15- 180°
PA Tube 18 x 1.5



P2
Ø 18 -ID15- 90°
PA Tube 18 x 1.5

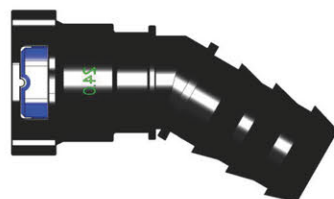


P3
Ø 18 -ID15- 135°
PA Tube 18 x 1.5

24.0



N1
Ø24 -ID21- 180°
PA Tube 25 x 2



N2
Ø24 -ID21- 90°
PA Tube 25 x 2

Male End Piece

Ø 6.3 (1/4")

Ø 7.89 (5/16")



- | | | | | | | | | | |
|---|--|---|---|---|--|--|--|--|--|
| MEP1
Ø 6.30 - ID6 - 180°
PA Tube 8 x 1 | MEP14
Ø 7.89 - ID4 - 180°
PA Tube 6 x 1 | MEP2
Ø 7.89 - ID6 - 180°
PA Tube 8 x 1 | MEP3
Ø 7.89 - ID6 - 180°
PA Tube 8 x 1 | MEP4
Ø 7.89 - ID6 - 180°
PA Tube 8 x 1 | MEP5
Ø 7.89 - ID8 - 180°
PA Tube 10 x 1 | MEP 50
Ø 7.89 - ID6 - 90°
PA Tube 8 x 1 | MEP 51
Ø 7.89 - ID6 - 90°
PA Tube 8 x 1 | MEP26
Ø 7.89 - ID6 - 115°
PA Tube 8 x 1 | MEP27
Ø 7.89 - ID6 - 180°
PA Tube 8 x 1 |
|---|--|---|---|---|--|--|--|--|--|

Ø9.49 (3/8")

Ø 9.6



- | | | | | | | | |
|---|--|--|--|---|---|---|--|
| MEP6
Ø 9.49 - ID6 - 180°
PA Tube 8 x 1 | MEP7
Ø 9.49 - ID8 - 180°
PA Tube 10 x 1 | MEP11
Ø 9.49 - ID6 - 180°
PA Tube 8 x 1 | MEP12
Ø 9.49 - ID8 -
PA Tube 10 x 1 | MEP40
Ø 9.49 - ID10 - 180°
PA Tube 12.5 x 1.25 | MEP15
Ø 9.49 - ID8 - 180°
PA Tube 10 x 1 | MEP 52
Ø 9.49 - ID8 - 90°
PA Tube 10 x 1 | MEP20
Ø 9.6 - ID8 - 180°
PA Tube 10 x 1 |
|---|--|--|--|---|---|---|--|

Ø9.89 (10mm)



MEP8
Ø 9.89 - ID8 - 180°
PA Tube 10 x 1



MEP9
Ø 9.89 - ID8 - 180°
PA Tube 10 x 1



MEP16
Ø 9.89 - ID6 - 180°
PA Tube 8 x 1



MEP21
Ø 9.89 - ID6 - 180°
PA Tube 8 x 1



MEP22
Ø 9.89 - ID8 - 180°
PA Tube 8 x 1

Ø11.8



MEP10
Ø11.8 - ID10 - 180°



MEP18 ★
Ø11.8 - ID8 - 180°



MEP18 -1 ★
Ø11.8 - ID8 - 180°



MEP19 ★
Ø11.8 - ID1/2" - 180°

Male End Piece

12.61



MEP25

Ø12.6 - ID12 - 90°
PA Tube 15 x 1.5



MEP17

Ø12.6 - ID12 - 180°
PA Tube 15 x 1.5



MEP28

Ø12.6 - ID12 - 180°
PA Tube 15 x 1.5



MEP29

Ø12.6 - ID12 - 180°
PA Tube 15 x 1.5



MEP30

Ø12.6 - ID8 - 180°
PA Tube 15 x 1.5

Ø15.82



MEP13

Ø 15.82 - ID14 - 180°
PA Tube 18 X 2



MEP31

Ø 15.82 - ID14 - 180°
PA Tube 18 X 2



MEP33

Ø 15.82 - ID12 - 180°
PA Tube 16 X 2



MEP33-L

Ø 15.82 - ID12 - 180°
PA Tube 16 X 2



MEP34

Ø 15.82 - ID15.5 - 180°
Hose ID 15.5



MEP38

Ø 17.5 - ID14-180°
PA Tube 18 x 2



MEP25.4

Ford kettle connector
Thread G3/4" (14/inch)

SAE Plug 防尘罩



FC1

Adaptation
Ø 6.30 or SAE 1/4" Plug



FC2

Adaptation
Ø 7.89 OR SAE 5/16"
Plug



FC3

Adaptation
Ø 9.49 or SAE 3/8" Plug



FC4

Adaptation
Ø 9.89 or SAE 10 Plug



FC5

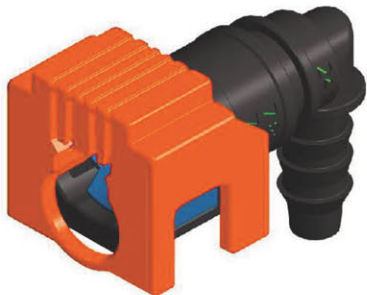
Adaptation
Ø 11.80 or SAE 12 Plug
Ø12.61 or SAE 1/2" Plug



FC7

Adaptation
Ø 15.82 or SAE 5/8" Plug

Safe Double lock 双边安全锁



SDL-1

Adaptation Ø 6.30 or SAE
1/4



SDL-2

Adaptation Ø 7.89 OR
SAE 5/16



SDL-3

Adaptation Ø 9.49 or SAE
3/8



SDL-4

Adaptation Ø 9.89 or
SAE10



SDL-5

Adaptation Ø 11.80 or
SAE 12

T型三通 T type tee



T1
ID6 Equal T type tee
PA Tube 8 x 1



T2
ID8 Equal T type tee
PA Tube 10 x 1



T3
Reducing T type tee
Rubber ID7.5, PA Tube 8 x 1



T4
ID4 Equal T type tee
PA Tube 6 x 1



T5
ID8 Equal T type tee
PA Tube 10 x 1



T6
Reducing T type tee
PA Tube 8x1, 10x1, 8x1



T7
ID9 Equal T type tee
PA Tube 12X1.5



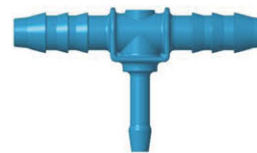
T8
Ø7.89 - ID6 - ID6
PA Tube 8x1, 8x1



T9
ID12 Equal T type tee
PA Tube 15 x 1.5



T10
Reducing T type tee
PA Tube 23x1.5, Rubber ID 10



T11
Reducing T type tee
PA Tube 8x1, Hose ID 4



T15
Reducing T type tee
PA Tube 10 x 1, 8 x 1,
8 x 1



T16
Ø7.89 - ID6 - ID6
PA Tube 8 X1, 8 x 1



T106
ID 14 - 8 - 12
PA Tube 12.5x1.25

- T100 ID 10 - 10 - 10
- T101 ID 10 - 8 - 8
- T102 ID 10 - 8 - 10
- T103 ID 12 - 8 - 10
- T104 ID 8 - 8 - 12
- T105 ID 12 - 8 - 12
- T106 ID 14 - 8 - 12
- T107 ID 14 - 8 - 12

Y型三通 Y type tee



Y1

Equal Y type tee ID6
PA Tube 8 x 1



Y2

Y type tee
PA Tube 10 x 1, 10 x 1
Hose ID 7.5



Y3

Equal Y type tee
Rubber hose ID 5.5



Y4

Equal Y type tee
HOSE ID 9.5 OR PA 10 X 1



Y5

Equal Y type tee
PA 10 x 1



T158

Ø15.82 -3/8" - 3/8"
hose 3/8"



Y6

Reducing Y type tee
PA 10 x1,8 x1,8x1



Y7

Equal Y type tee ID4
PA Tube 6 x 1



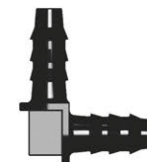
Y8

Equal Y type tee
Hose ID 7.5



L1

Reducing L Coupling
PA Tube 8 x 1
Hose ID 7.5



L2

Equal L Coupling
PA Tube 8x1, 8x1



L3

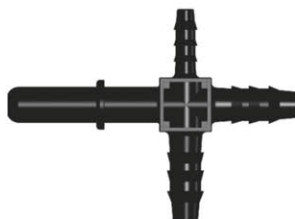
Reduceing L Coupling
Hose ID 9.5, PA tube 10
x1

四通 Four ways



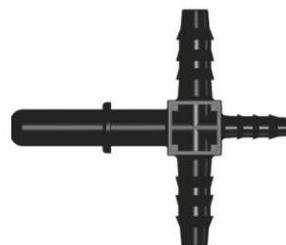
S1

Equal 4 Ways
PA Tube 6 x 1



S2

Ø 7.89 End Piece
PA Tube 6x1,8x1,8x1



S3

Ø 7.89 End Piece
PA Tube 8x1,6x1,8x1



KS1

Four way
ID14-ID14-ID14-ID6

直通 Straight coupling



Z1
Equal Coupling
PA Tube 8x1, 8x1



Z2
Reducing Coupling
PA Tube 9 x 1
Rubber hose ID 9.5



Z3
Equal Coupling
Rubber hose ID 3.5



Z4
Reducing coupling
Rubber hose ID 12
Rubber hose ID 22



Z5
Reducing Coupling
PA Tube 8 x 1
Rubber hose ID 7.5



Z6
Reducing Coupling
PA Tube 10 x 1
Rubber hose ID 7.5



Z11
Reducing Coupling
PA Tube 10 x 1
Hose ID 9.5



Z15
Reducing Coupling
PA Tube 8 x 1
Rubber hose ID 3



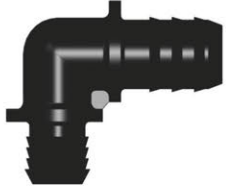
Z18
Equal Coupling
PA Tube 10x1, 10x1



Z19
Reducing Coupling
max barb Ø13 to Ø



Z9 (For ford)
Embedded Rubber
PA Tube 14x1.5



Z10 (For ford)
Embedded Rubber
PA Tube 18 x 2



Z20 ★
Reducing Coupling
hose 5/8" to 3/8"

Fuel Injection Nozzle Cap



M1
Fit Ø 7.89 Female
connector For DH020M



M2
For DH020M Nozzle
Hose ID 7.5



M3
single side Cap
Hose ID 6mm



M4
single side Cap
fit for Ø 7.89 female QC

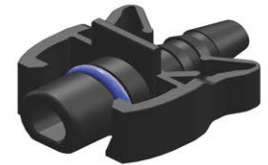
DW type Quick connector



DW-1
D11.5-ID5 -90°
PA Tube 7 x1

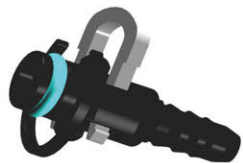


DW-2
D11.5-ID5 -90°
PA Tube 7 x1



DW-3
D11.5-ID5 -180°
PA Tube 7 x1

NW type Quick connector



NW-1
Ø12- ID6 -180°
PA Tube 8 x 1



NW-2
Ø12 - ID6 -90°
PA Tube 8 x 1



NW-3
Ø12-ID8 -180°
PA Tube 10 x 1



NW-4
Ø12- ID8 -90°
PA Tube 10 x 1



NW-5
Ø16 -ID9 - 180°
PA Tube 12 x 1.5



NW-6
Ø16 -ID9 - 90°
PA Tube 12 x 1.5



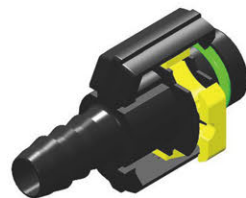
NW-7
D12-ID6 - 60°
PA Tube 8 x 1



NW-8
D10-ID6-180°
PA Tube 8 x 1



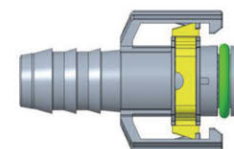
NW-21
D10-ID6-90°
PA Tube 8 x 1



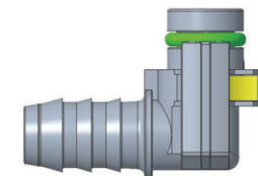
NW-9
D16 - ID 10 - 180°
PA Tube 12.5 x1.25



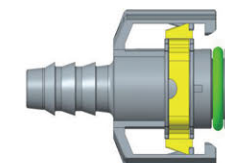
NW-10
D16 - ID 10 - 90°
PA Tube 12.5 x1.25



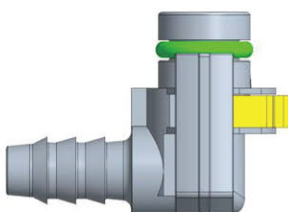
NW-11
D16 - ID 12 - 180°
PA Tube 15 x1.5



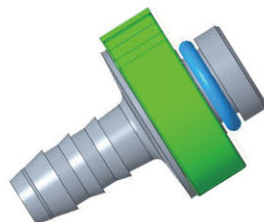
NW-12
D16 - ID 12 - 90°
PA Tube 15 x1.5



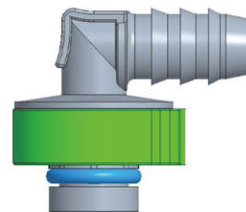
NW-13
D16 - ID 8 - 180°
PA Tube 10 x1



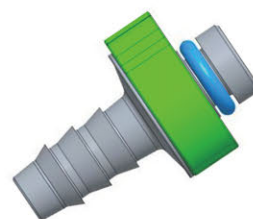
NW-14
D16 - ID 8 - 90°
PA Tube 10 x1



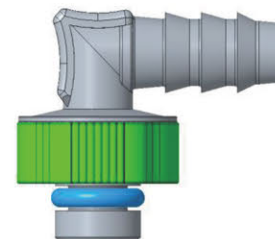
NW-15
D16 - ID 9 - 180°
PA Tube 12 x1.5



NW-16
D16 - ID 9 - 90°
PA Tube 12 x1.5



NW-17
D11.5 - ID8- 180°
PA Tube 10 x1



NW-18
D11.5 - ID8 - 90°
PA Tube 10 x1

Othe connectors



FB1
Reducing type tee
PA Tube PA Tube 9 x 1
Rubber hose ID 9.5, 3



FB2
Reducing type tee
Rubber hose ID 6
Rubber hose ID 8



FB3
D7.0-ID4-Tee
PA Tube 6 x 1 ,6 x 1



FB4
D7.0-ID4 - 90°
PA Tube 6 x 1



FB5
3 way
PA Tube PA Tube 8 x 1
7.89 and 9.49



FB6
D5.8-ID4 -105°
PA Tube 6 X 1



FB7
D5.8-ID4 - 90°
Rubber hose ID4



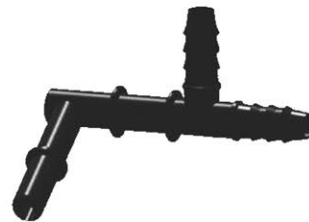
FB8
D5.8-ID4 -3way
Rubber hose ID4



FB9
D5.8 - ID4 (90°&180°)
Rubber hose ID 4



FB10
D5.8 - ID4 90°
Rubber hose ID 4



FB11
9.49 -ID8-ID8
PA Tube 10 X1, 10 X1



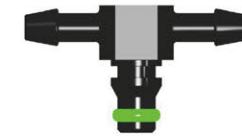
FB12
D5.8-ID4 -135°
PA Tube 6 X 1



FB13
D5.8 -ID4 -90°
PA Tube 6 X 1



FB14
D5.8 -ID4 -Tee
PA Tube 6 X 1



FB15
D5.8 -ID4 -Tee
PA Tube 6 X 1



FB16
D5.8 -ID4 -90°
PA Tube 6 X 1



FB17
D5.8 - ID4 -90°
PA Tube 6 X 1

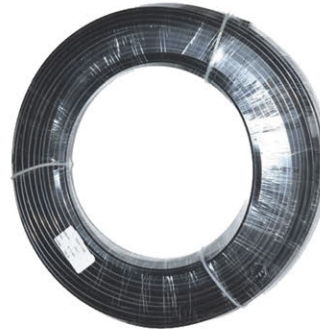
Fuel Pump Corrugated pipe



ID : Ø6 mm , Ø8mm, Ø10mm

Length:100mm,120mm,140mm,160mm,180mm,200mm,220mm . . .

PA 11 , P12 Nylon Tube



size: mm

OD x T (Thickness)

5 x 1

6 x 1

7 x 1

10 x 1.25

10 x 1

12 x 1.5

18 x 1.5



Welcome to customize, We can do fuel line assembly according to your drawing or samples.

Male end piece



MEP63
9.49 - 1/4" 18NPT

REF.NO	SIZE
MEP 61	6.35 - 1/4" NPT
MEP 62	7.89 - 1/4" NPT
MEP 63	9.49 - 1/4" NPT
MEP 64	9.89 - 1/4" NPT
MEP 65	11.8 - 1/4" NPT
MEP 66	12.61 - 3/8" NPT
MEP 67	15.82 - 3/8" NPT
MEP 77	12.61 - 9/16" UNF
...	12.61- M14 x1.5
...	12.61- M16 x1.5
...	12.61-M22 x 1.5.

Straight coupling

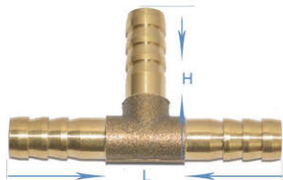


Z50
Equal coupling
Φ6mm

Data sheet

REF.NO	SIZE (mm)	Length (mm)
Z50	Φ6	40
Z51	Φ8	40
Z52	Φ10	-
Z53	Φ12	-
Z54	Φ14	-
Z55	Φ16	-
Z56	Φ19	-
Z57	Φ25	-
Z58	Φ6	65
Z59	Φ8	65

T type Tee



T50
Equal Tee
Φ6mm

Data sheet

REF.NO	SIZE (mm)	L (mm)	H (mm)
T50	Φ6	56	33
T51	Φ8	-	-
T52	Φ10	-	-
T53	Φ12	-	-
T54	Φ14	69	41
T55	Φ16	-	-
T56	Φ19	-	-

Y type Tee



Equal Y Tee
Φ6mm

Data sheet

REF.NO	SIZE (mm)	HEIGHT (mm)	weight (g)
Y50	Φ6	-	-
Y51	Φ8	-	-
Y52	Φ10	-	-
Y53	Φ12	-	-
Y54	Φ14	-	-
Y55	Φ16	-	-
-	-	-	-

Fuel line connector Discharge / install Tools



AL-713

A/C ,Fuel line Disconnect tool set
(1/4", 5/16", 3/8", 1/2", 5/8", 3/4", 7/8")



AL-733

Fuel hose Disconnect Pliers



AL-723

Quick connector Disconnect tool



AL-735

Hose Clamp Pliers



AL-736

Hose Clamp Pliers



AL-751

Fuel tank pump disassembly
wrench



AL-799
Fuel line connector instal tools

AL-799

Fuel connector install tools



AL-777
Fuel line connector instal tool

AL-777

Fuel line connector instal tools