



ADD: 3/F BUILDING G23-1, QIAN ROAD NO.756, CANGSHAN DISTRICT,
FUZHOU, CHINA

TEL: 0086-591-83766532
FAX: 0086-591-83852937

Email: linsivuan@vanhos.com

LED 2017 Catalogue

Reeyah®
Lighting



Commercial lighting



COMPANY INTRODUCTION >>>

Fuzhou Reeyah lighting CO.,LTD, which was established in 1996, is one of professional manufacturer focusing on Saving energy lamps(CFL), LED lamps,Lightings,and Electrical Accessories in China. we have strong technical force, advanced technique and producing line.

All of our production passed CE, SASO, ROHS certificate. Many series production acquired UL, VED and BS certifications. Moreover we are readily to supplying samples for customer to apply the special certification which fit for his market.

Our production sells to many countries and enjoy high reputation in Oriental and South Asia, Europe, American and Middle East ect for their top quality , reasonable price and wonderful service. Furthermore, we also can help customer develop other new production based on samples, photos and drawings.

Welcome you inquiry and cooperation! We sincerely hope that we could establish a good and long term business relationship in near future. We will bright your life !

LED Ceiling Light Series



RY-BFA

FEATURES

- ▶ Constant current driver
- ▶ Base type: E27 B22
- ▶ WW: 2700-3300K NW: 4000-4500K CW: 6000-6500K
- ▶ Body material: Aluminum clad with plastic



Specifications

ITEM	BFA55-5W	BFA60-7W	BFA60-10W	BFA70-13W
INPUT VOLTAGE	AC85-277V 50/60HZ	AC85-277V 50/60HZ	AC85-277V 50/60HZ	AC85-277V 50/60HZ
PF	0.5/0.9	0.5/0.9	0.5/0.9	0.5/0.9
WATT	5W	7W	10W	13W
LUMEN	380LM/390LM/400LM	550LM/560LM/580LM	780LM/800LM/820LM	1050LM/1070LM/1100LM
COLOR	WW/NW/CW	WW/NW/CW	WW/NW/CW	WW/NW/CW
CRI	70/80	70/80	70/80	70/80
DIMMABLE	YES/NO	YES/NO	YES/NO	YES/NO
TYPE	SMD2835	SMD2835	SMD2835	SMD2835

LED BULB

5W-14W



LED Bulb Series



LED Bulb Series



RY-BDA

FEATURES

- ▶ Constant current driver
- ▶ Base type:E27 B22
- ▶ WW:2700-3300K NW:4000-4500K CW:6000-6500K
- ▶ Body material:Aluminum clad with plastic

Specifications

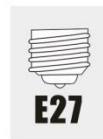
ITEM	BDA60-6W	BDA60-8W	BDA65-10W	BDA70-12W
INPUT VOLTAGE	AC85-277V 50/60HZ	AC85-277V 50/60HZ	AC85-277V 50/60HZ	AC85-277V 50/60HZ
PF	0.5/0.9	0.5/0.9	0.5/0.9	0.5/0.9
WATT	6W	8W	10W	12W
LUMEN	480LM/490LM/500LM	650LM/670LM/680LM	800LM/820LM/850LM	1000LM/1050LM/1100LM
COLOR	WW/NW/CW	WW/NW/CW	WW/NW/CW	WW/NW/CW
CRI	70/80	70/80	70/80	70/80
DIMMABLE	YES/NO	YES/NO	YES/NO	YES/NO
TYPE	SMD2835	SMD2835	SMD2835	SMD2835

LED Bulb Series



FEATURES:

- ▶ Constant current driver
- ▶ Base type:E27 B22
- ▶ WW:2700-3300K NW:4000-4500K CW:6000-6500K
- ▶ Body material:Aluminum clad with plastic



Specifications

ITEM	BDG95-10W	BDG95-14W
INPUT VOLTAGE	AC85-277V 50/60HZ	AC85-277V 50/60HZ
PF	0.5/0.9	0.5/0.9
WATT	10W	14W
LUMEN	800LM/820LM/850LM	1150LM/1200LM/1250LM
COLOR	WW/NW/CW	WW/NW/CW
CRI	70/80	70/80
TYPE	SMD2835	SMD2835



LED Bulb Series



FEATURES:

- ▶ Constant current driver
- ▶ Base type:E27
- ▶ WW:2700-3300K NW:4000-4500K CW:6000-6500K
- ▶ Body material:Aluminum clad with plastic



Specifications

ITEM	BDPW54
INPUT VOLTAGE	AC85-277V 50/60HZ
PF	0.5/0.9
WATT	8W
LUMEN	640LM/660LM/680LM
COLOR	WW/NW/CW
CRI	70/80
DIMMABLE	YES/NO
TYPE	SMD2835



LED SPOTLIGHT

6W-18W
CRI>80



LED Spotlight Series



RY-BGMGU10
RY-BGMGU53

FEATURES:

- ▶ Constant current driver
- ▶ Base type:GU10/MR16
- ▶ WW:2700-3300K NW:4000-4500K CW:6000-6500K
- ▶ Body material:Aluminum clad with plastic



Specifications

ITEM	BMGU10-6W	BMGU53-6W
INPUT VOLTAGE	AC85-277V 50/60Hz	AC/DC 12V
PF	0.5/0.9	0.5/0.9
WATT	6W	6W
LUMEN	370LM/400LM/420LM	370LM/400LM/420LM
COLOR	WW/NW/CW	WW/NW/CW
CRI	80	80
TYPE	EMC3030	EMC3030

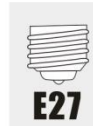


LED Spotlight Series



FEATURES:

- ▶ Constant current driver
- ▶ Base type:E27
- ▶ WW:2700-3300K NW:4000-4500K CW:6000-6500K
- ▶ Body material:Aluminum clad with plastic



Specifications

ITEM	BRP30-12W
INPUT VOLTAGE	AC85-277V 50/60HZ
PF	0.5/0.9
WATT	12W
LUMEN	800LM/820LM/850LM
COLOR	WW/NW/CW
CRI	70/80
DIMMABLE	YES/NO
TYPE	COB1313/1919 12W



LED Spotlight Series



FEATURES:

- ▶ Constant current driver
- ▶ Base type:E27
- ▶ WW:2700-3300K NW:4000-4500K CW:6000-6500K
- ▶ Body material:Aluminum clad with plastic



Specifications

ITEM	BRP30-18W-1	BRP38-18W
INPUT VOLTAGE	AC85-277V 50/60HZ	AC85-277V 50/60HZ
PF	0.5/0.9	0.5/0.9
WATT	12W	18W
LUMEN	800LM/820LM/850LM	1300LM/1350LM/1400LM
COLOR	WW/NW/CW	WW/NW/CW
CRI	70/80	70/80
DIMMABLE	YES/NO	YES/NO
TYPE	EMC3030 1W	EMC3030 1W



LED CEILING LIGHT

6W-20W Square & Circle



LED Ceiling Light



FEATURES:

- ▶ Constant current driver
- ▶ WW:2700-3300K NW:4000-4500K CW:6000-6500K



Specifications

ITEM	XR300-15H	XR350-18H
INPUT VOLTAGE	AC85-277V 50/60HZ	AC85-277V 50/60HZ
PF	0.5/0.9	0.5/0.9
WATT	15W	18W
LUMEN	1200LM/1250LM/1275LM	1450LM/1500LM/1530LM
COLOR	WW/NW/CW	WW/NW/CW
CRI	70/80	70/80
DIMMABLE	YES/NO	YES/NO
TYPE	SMD 2835	SMD 2835



LED Ceiling Light



FEATURES:

- ▶ Constant current driver
- ▶ WW:2700-3300K NW:4000-4500K CW:6000-6500K
- ▶ Body material:Aluminum Die-casting housing



Specifications

ITEM	RY-LEDPLCI-R	RY-LEDPLCI-S
INPUT VOLTAGE	AC85-277V 50/60HZ	AC85-277V 50/60HZ
PF	0.5/0.9	0.5/0.9
WATT	3W/6W/9W/12W/15W/18W	3W/6W/9W/12W/15W/18W
LUMEN	260LM/550LM/800LM/1100LM 1400LM/1700LM	260LM/550LM/800LM/1100LM 1400LM/1700LM
COLOR	WW/NW/CW	WW/NW/CW
CRI	70/80	70/80
DIMMABLE	YES/NO	YES/NO
TYPE	SMD 2835	SMD 2835

LED Ceiling Light



FEATURES:

- ▶ Constant current driver
- ▶ WW:2700-3300K NW:4000-4500K CW:6000-6500K
- ▶ Body material:Aluminum Die-casting housing



Specifications



ITEM	RY-LEDPLOI-R	RY-LEDPLOI-S
INPUT VOLTAGE	AC85-277V 50/60HZ	AC85-277V 50/60HZ
PF	0.5/0.9	0.5/0.9
WATT	3W/6W/12W/18W	3W/6W/12W/18W
LUMEN	260LM/550LM/1100LM/1700LM	260LM/550LM/1100LM/1700LM
COLOR	WW/NW/CW	WW/NW/CW
CRI	70/80	70/80
DIMMABLE	YES/NO	YES/NO
TYPE	SMD 2835	SMD 2835

LED Ceiling Light



FEATURES:

- ▶ Constant current driver
- ▶ WW:2700-3300K NW:4000-4500K CW:6000-6500K



Specifications

ITEM	RY-LEDGPL-R	RY-LEDGPL-S
INPUT VOLTAGE	AC85-277V 50/60HZ	AC85-277V 50/60HZ
PF	0.5/0.9	0.5/0.9
WATT	3W/6W/12W/18W	3W/6W/12W/18W
LUMEN	260LM/550LM/1100LM/1700LM	260LM/550LM/1100LM/1700LM
COLOR	WW/NW/CW	WW/NW/CW
CRI	70/80	70/80
DIMMABLE	YES/NO	YES/NO
TYPE	SMD5730	SMD5730

LED Ceiling Light



FEATURES:

- ▶ Constant current driver
- ▶ WW:2700-3300K NW:4000-4500K CW:6000-6500K



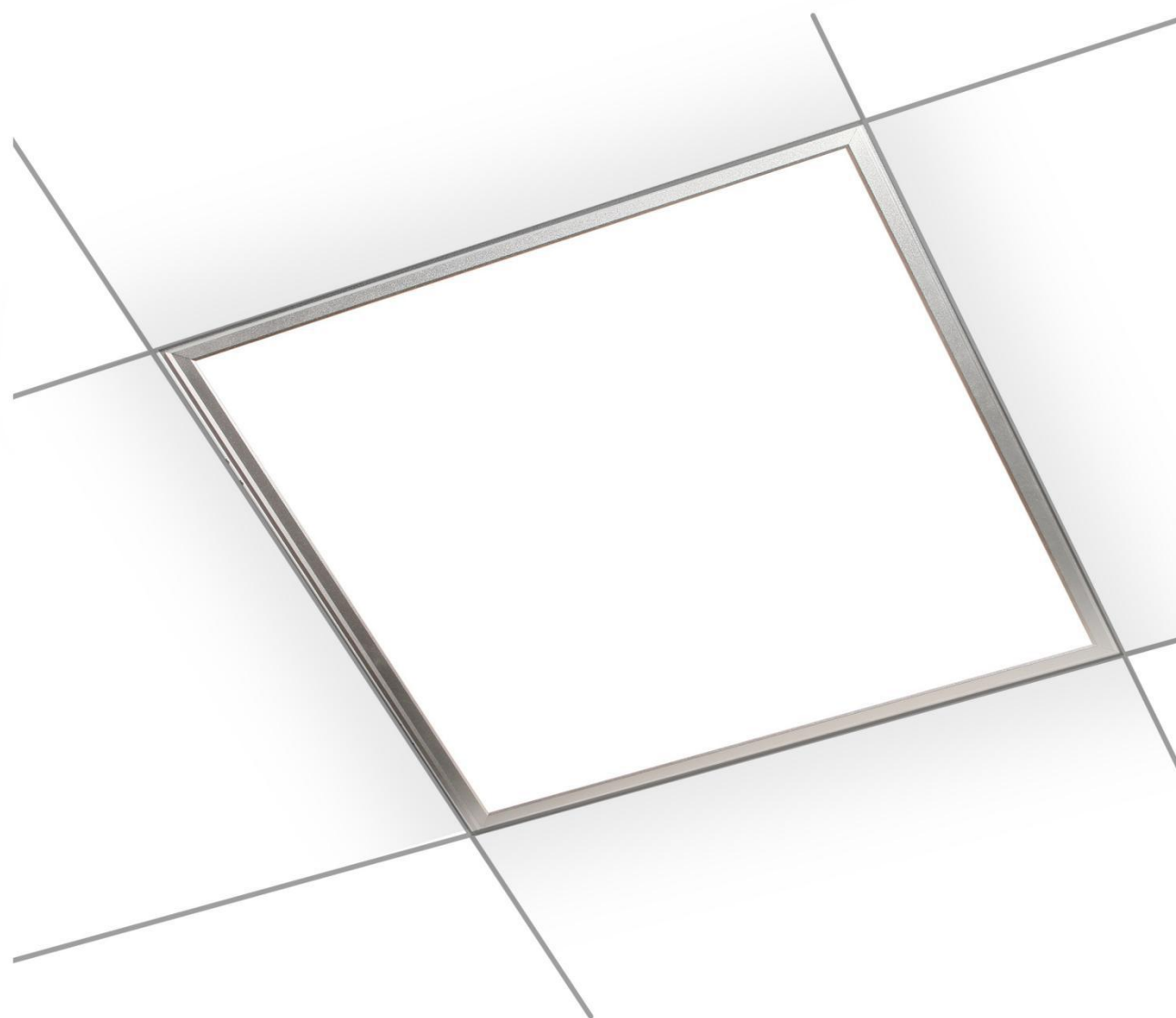
Specifications

ITEM	RY-LEDCL
INPUT VOLTAGE	AC85-277V 50/60HZ
PF	0.5/0.9
WATT	3W/5W/7W/9W/12W/15W/18W
LUMEN	225LM/375LM/525LM/675LM/900LM/1125LM/1350LM
COLOR	WW/NW/CW
CRI	70/80
DIMMABLE	YES/NO
TYPE	EMC3030



LED PANEL LIGHT

30W-60W



LED PANEL LIGHT



FEATURES:

- ▶ Constant current driver
- ▶ WW:2700-3300K NW:4000-4500K CW:6000-6500K



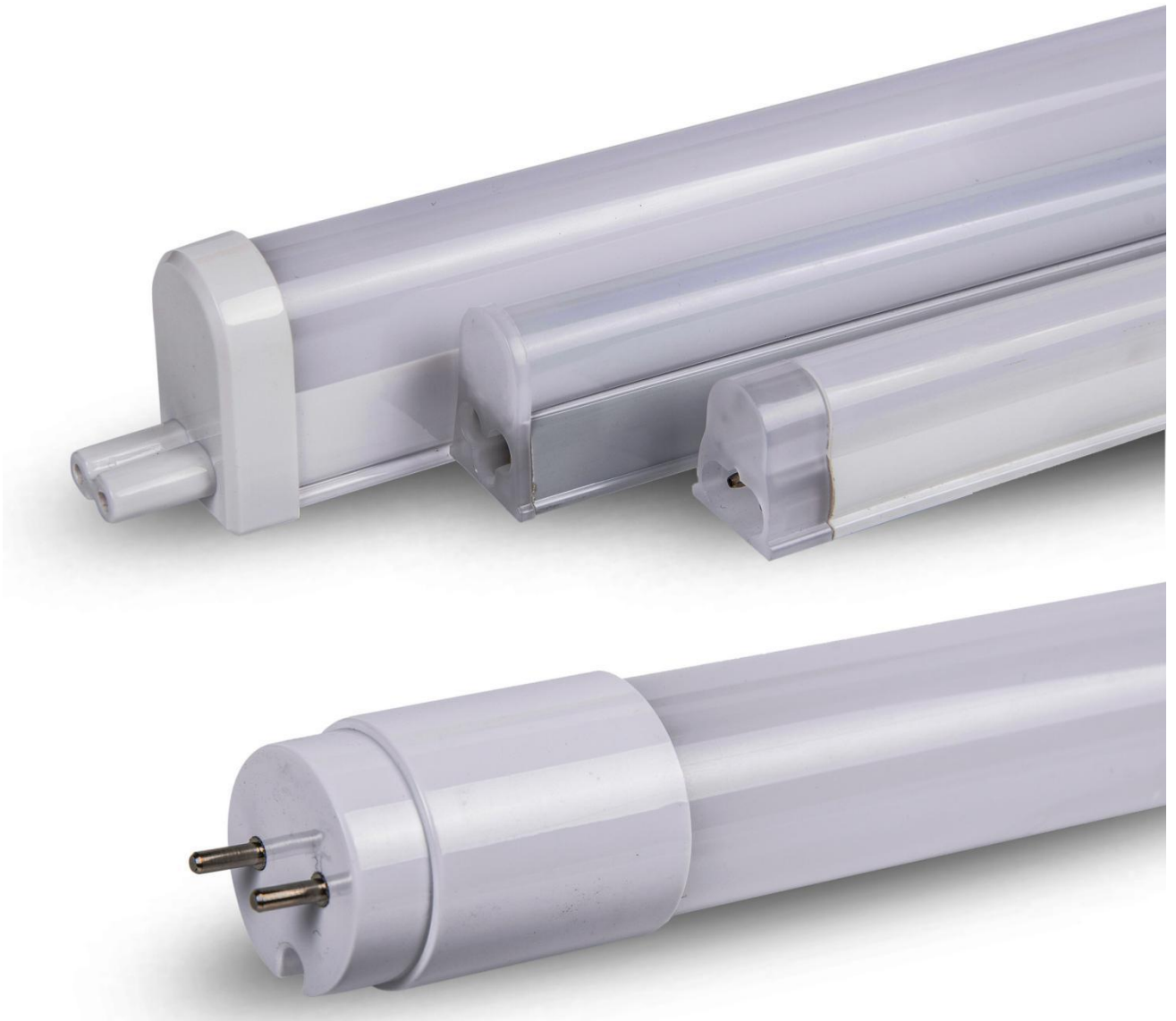
Specifications



ITEM	RY-PB0106-30w-1	RY-PB0106-30w-2	RY-PB0106-54w
INPUT VOLTAGE	AC85-277V 50/60HZ	AC85-277V 50/60HZ	AC85-277V 50/60HZ
PF	0.9	0.9	0.9
WATT	30W	30W	54W
LUMEN	2500LM/2600LM/2700LM	2500LM/2600LM/2700LM	4500LM/4600LM/4800LM
COLOR	WW/NW/CW	WW/NW/CW	WW/NW/CW
CRI	70/80	70/80	70/80
TYPE	SMD2835	SMD2835	SMD2835

LED TUBE

4W-40W



LED Tube Light



FEATURES:

- ▶ Constant current driver
- ▶ WW:2700-3300K NW:4000-4500K CW:6000-6500K
- ▶ Aluminum with PC cover & All Plastic body



Specifications (Aluminum with PC cover)

ITEM	T8-X01-10H	T8-X01-18H	T8-X01-20H	T8-X01-36H
INPUT VOLTAGE	AC85-277V 50/60HZ	AC85-277V 50/60HZ	AC85-277V 50/60HZ	AC85-277V 50/60HZ
PF	0.5/0.9	0.5/0.9	0.5/0.9	0.5/0.9
WATT	10W	18W	20W	36W
LUMEN	800LM-850LM	1500LM-1600LM	2000LM-2100LM	3100LM-3200LM
COLOR	WW/NW/CW	WW/NW/CW	WW/NW/CW	WW/NW/CW
CRI	70/80	70/80	70/80	70/80
TYPE	SMD2835	SMD2835	SMD2835	SMD2835

Specifications (All Plastic body)

ITEM	T8-S02-9H	T8-S02-16H
INPUT VOLTAGE	AC85-277V 50/60HZ	AC85-277V 50/60HZ
PF	0.5/0.9	0.5/0.9
WATT	9W	16W
LUMEN	810LM-900LM	1450LM-1600LM
COLOR	WW/NW/CW	WW/NW/CW
CRI	70/80	70/80
TYPE	SMD2835	SMD2835

LED Tube Light



FEATURES:

- ▶ Constant current driver
- ▶ WW:2700-3300K NW:4000-4500K CW:6000-6500K
- ▶ Aluminum with PC cover

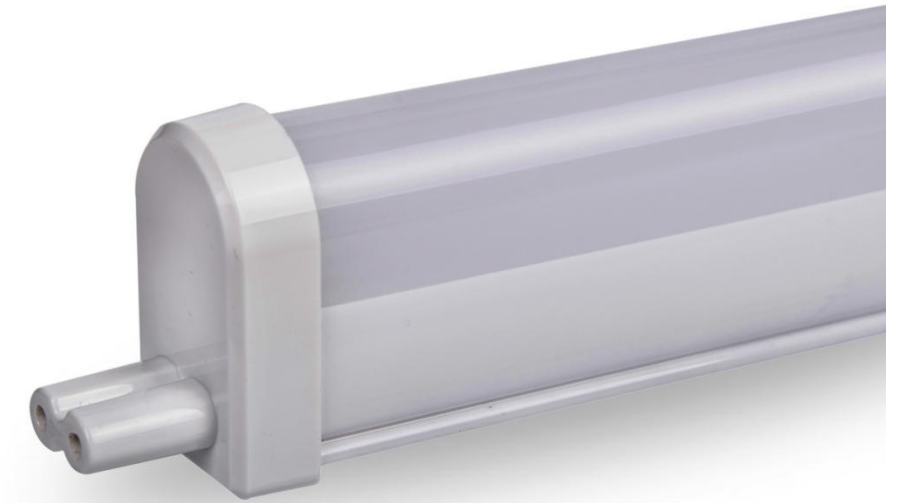


Specifications

ITEM	RY-UT8-20
INPUT VOLTAGE	AC85-277V 50/60HZ
PF	0.5/0.9
WATT	20W
LUMEN	1700LM
COLOR	WW/NW/CW
CRI	70/80
TYPE	SMD2835



LED Tube Light



FEATURES:

- ▶ Constant current driver
- ▶ WW:2700-3300K NW:4000-4500K CW:6000-6500K
- ▶ Aluminum with PC cover



Specifications

ITEM	RY-LEDT5-0.3	RY-LEDT5-0.6	RY-LEDT5-0.9	RY-LEDT5-1.2
INPUT VOLTAGE	AC85-277V 50/60HZ	AC85-277V 50/60HZ	AC85-277V 50/60HZ	AC85-277V 50/60HZ
PF	0.5/0.9	0.5/0.9	0.5/0.9	0.5/0.9
WATT	4W	8W	12W	16W
LUMEN	350LM	680LM	1100LM	1400LM
COLOR	WW/NW/CW	WW/NW/CW	WW/NW/CW	WW/NW/CW
CRI	70/80	70/80	70/80	70/80
TYPE	SMD2835	SMD2835	SMD2835	SMD2835

LED WATERPROOF LIGHT

18W-46W



LED Waterproof Light



FEATURES:

- ▶ Constant current driver
- ▶ WW:2700-3300K NW:4000-4500K CW:6000-6500K

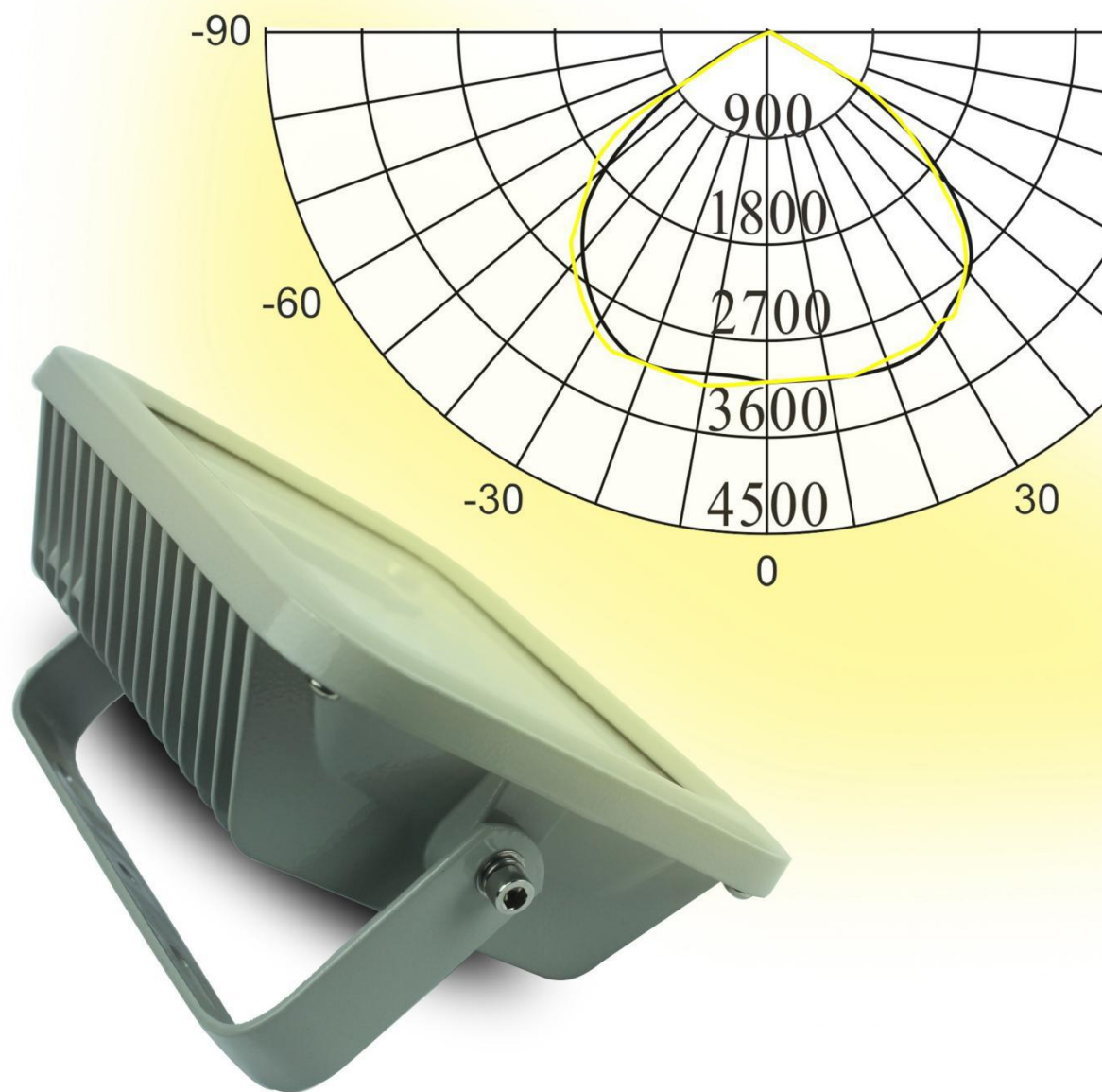


Specifications

ITEM	RY-LG06A-06	RY-LG06A-12	RY-LG06A-15
SIZE	590X86X66	1180X86X66	1480X86X72
INPUT VOLTAGE	AC85-277V 50/60HZ	AC85-277V 50/60HZ	AC85-277V 50/60HZ
PF	0.9	0.9	0.9
WATT	18W	36W	46W
LUMEN	1400LM/1450LM/1500LM	2800LM/2900LM/3000LM	3600LM/3700LM/3800LM
COLOR	WW/NW/CW	WW/NW/CW	WW/NW/CW
CRI	70/80	70/80	70/80
TYPE	SMD2835	SMD2835	SMD2835

LED FLOOD LIGHT

10W-100W
IP65



LED Flood Light



RY-FDC

FEATURES:

- ▶ Constant current driver
- ▶ WW:2700-3300K NW:4000-4500K CW:6000-6500K
- ▶ Body material:Aluminum Die-casting housing



Specifications

ITEM	RY-FDC-20W	RY-FDC-30W	RYFDC-50W	RY-FDC-70W
SIZE	198X157X60	242X230X66	300X245X75	330X275X95
INPUT VOLTAGE	AC85-265V 50/60HZ	AC85-265V 50/60HZ	AC85-265V 50/60HZ	AC85-265V 50/60HZ
PF	0.9	0.9	0.9	0.9
WATT	20W	30W	50W	70W
LUMEN	1600LM-1700LM	2400LM-2550LM	4000LM-4250LM	5600LM-5950LM
COLOR	WW/NW/CW	WW/NW/CW	WW/NW/CW	WW/NW/CW
CRI	70	70	70	70
TYPE	SMD2835	SMD2835	SMD2835	SMD2835
ITEM	RY-FDC-80W	RY-FDC-100W		
SIZE	330X275X95	330X275X95		
INPUT VOLTAGE	AC85-265V 50/60HZ	AC85-265V 50/60HZ		
PF	0.9	0.9		
WATT	80W	100W		
LUMEN	6400LM-6800LM	8000LM-8500LM		
COLOR	WW/NW/CW	WW/NW/CW		
CRI	70	70		
TYPE	SMD2835	SMD2835		



LED Flood Light



RY-FL-10W-N1 RY-FL-20W-N1



RGB (10W-100W) PIR54/65(10W-50W)



RY-FL-30W-N1

RY-FL-50W-N1



RY-FL-70W-N1



RY-FL-80W-N1

RY-FL-100W-N1

FEATURES:

- ▶ Constant current driver
- ▶ WW:2700-3300K NW:4000-4500K CW:6000-6500K
- ▶ Body material:Aluminum Die-casting housing



Specifications

ITEM	RY-FL-10W-N1	RY-FL-20W-N1	RY-FL-30W-N1	RY-FL-50W-N1
SIZE	115X86X85	180X140X95	225X185X120	290X240X140
INPUT VOLTAGE	AC85-265V 50/60HZ	AC85-265V 50/60HZ	AC85-265V 50/60HZ	AC85-265V 50/60HZ
PF	0.9	0.9	0.9	0.9
WATT	10W	20W	30W	50W
LUMEN	800LM-850LM	1600LM-1700LM	2400LM-2550LM	4000LM-4250LM
COLOR	WW/NW/CW	WW/NW/CW	WW/NW/CW	WW/NW/CW
CRI	70	70	70	70
TYPE	COB	COB	COB	COB

ITEM	RY-FL-70W-N1	RY-FL-80W-N1	RY-FL-100W-N1
SIZE	370X290X80	370X290X80	370X290X80
INPUT VOLTAGE	AC85-265V 50/60HZ	AC85-265V 50/60HZ	AC85-265V 50/60HZ
PF	0.9	0.9	0.9
WATT	70W	80W	100W
LUMEN	5600LM-5950LM	6400LM-6800LM	8000LM-8500LM
COLOR	WW/NW/CW	WW/NW/CW	WW/NW/CW
CRI	70	70	70
TYPE	COB	COB	COB

LED Flood Light



RY-FL-N2

FEATURES:

- ▶ Constant current driver
- ▶ WW:2700-3300K NW:4000-4500K CW:6000-6500K
- ▶ Body material:Aluminum Die-casting housing

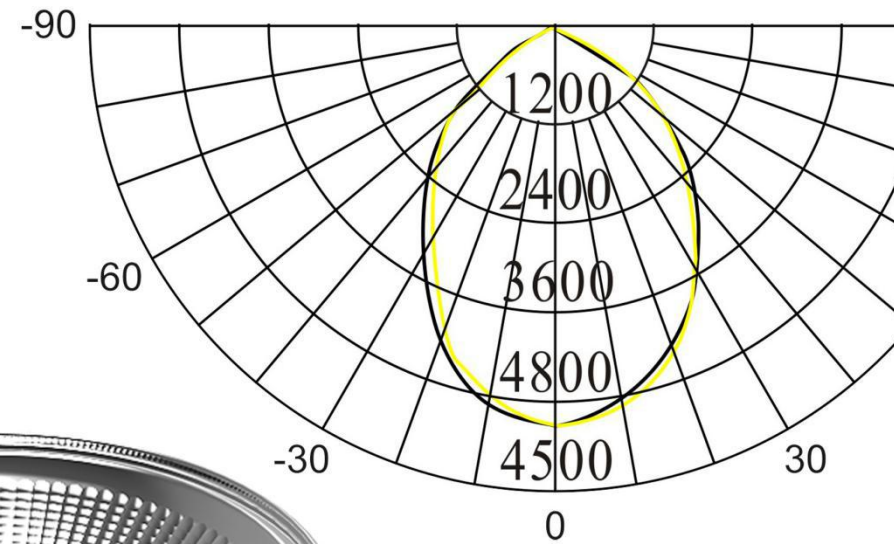


Specifications

ITEM	RY-FL-10W-N2	RY-FL-20W-N2	RYFL-30W-N2	RY-FL-50W-N2	RY-FL-60W-N2
SIZE	172X145X52	280X220X80	280X220X80	340X292X100	340X292X100
INPUT VOLTAGE	AC85-265V 50/60HZ	AC85-265V 50/60HZ	AC85-265V 50/60HZ	AC85-265V 50/60HZ	AC85-265V 50/60HZ
PF	0.9	0.9	0.9	0.9	0.9
WATT	10W	20W	30W	50W	60W
LUMEN	800LM-850LM	1600LM-1700LM	2400LM-2550LM	4000LM-4250LM	4800LM-5100LM
COLOR	WW/NW/CW	WW/NW/CW	WW/NW/CW	WW/NW/CW	WW/NW/CW
CRI	70	70	70	70	70
TYPE	COB	COB	COB	COB	COB

LED HIGHBAY LIGHT

80W-200W



LED Highbay Light



RY-LEDHB-01

FEATURES:

- ▶ Constant current driver
- ▶ WW:2700-3300K NW:4000-4500K CW:6000-6500K



Specifications

ITEM	RY-LEDHB-01-80W	RY-LEDHB-01-120W	RY-LEDHB-01-150W	RY-LEDHB-01-200W
INPUT VOLTAGE	AC85-277V 50/60HZ	AC85-277V 50/60HZ	AC85-277V 50/60HZ	AC85-277V 50/60HZ
PFC	0.9	0.9	0.9	0.9
WATT	80W	120W	150W	200W
LUMEN	7200LM	10800LM	13500LM	18000LM
COLOR	WW/NW/CW	WW/NW/CW	WW/NW/CW	WW/NW/CW
CRI	70/80	70/80	70/80	70/80
TYPE	COB	COB	COB	COB

LED Grille Lamp Series



Part No.:

- (1) Materials: 0.5mm Thick SPCC Cold-roll Steel Sheets Body Material and PMMA plastic film for perfect light diffusion.
- (2) Light source: choose the best quality and high bright SMD 2835 to be the light source, high bright and high CRI > 80, light decay under 3000h < 3%, lifespan as 50,000hrs.
- (3) High stability driver used, isolated constant current driver, with efficiency > 85%, LVD & EMC of CE certification approved.
- (4) CE & ROHS approved for the lamp, with 2-3 years warranty.
- (5) Recessed Mounted.

RY-CB0103-20W 20W LED Grille Lamp Technical Data

Parameter	Figure	Unit
Power Consumption	20W	W
Working Voltage	AC 85-277V	V
Working Frequency	50/60	Hz
PF	>0.95	-
Power Conversion Efficiency	>87%	-
Light Source	SMD 2835	-
CCT	3000 4000 6000	K
Luminous Flux	1500 1600 1700	Lm
Luminous Efficacy	70 75 80	Lm/W
CRI	80 80 80	
Viewing Angle	120	degree
Lifespan	50,000	hours
Working Temperature	-30 ~ +60	°C
Storage Temperature	-40 ~ +80	°C
Working Humidity	20% ~ 95%	
Storage Humidity	10% ~ 95%	

- Up to 30,000 hours lifespan.
- Over 60% power saving rate.

Application place

Widely used in office, school, factory, conference room, commercial and exhibition locations, hospital and other public places.

LED Panel Light Series



Part No.:

- (1) Materials: 0.5mm Thick SPCC Cold-roll Steel Sheets Body Material and PMMA plastic film for perfect light diffusion.
- (2) Light source: choose the best quality and high bright SMD 2835 to be the light source, high bright and high CRI > 80, light decay under 3000h < 3%, lifespan as 50,000hrs.
- (3) High stability driver used, isolated constant current driver, with efficiency > 85%, LVD & EMC of CE certification approved.
- (4) CE & ROHS approved for the lamp, with 2-3 years warranty.
- (5) Surface or Recessed Mounted.

RY-CB0106-40W 40W LED Panel Light Technical Data

Parameter	Figure	Unit
Power Consumption	40W	W
Working Voltage	AC 85-277V	V
Working Frequency	50/60	Hz
PF	>0.95	-
Power Conversion Efficiency	>87%	-
Light Source	SMD 2835	-
CCT	3000 4000 6000	K
Luminous Flux	2900 3000 3100	Lm
Luminous Efficacy	70 75 80	Lm/W
CRI	80 80 80	
Viewing Angle	120	degree
Lifespan	30,000	hours
Working Temperature	-30 ~ +60	°C
Storage Temperature	-40 ~ +80	°C
Working Humidity	20% ~ 95%	
Storage Humidity	10% ~ 95%	

- Up to 30,000 hours lifespan.
- Over 60% power saving rate.

Application place

Widely used in office, school, factory, conference room, commercial and exhibition locations, hospital and other public places.

LED Panel Light Series



Part No.:

- (1) Materials: 0.5mm Thick SPCC Cold-roll Steel Sheets Body Material and PMMA plastic film for perfect light diffusion.
- (2) Light source: choose the best quality and high bright SMD 2835 to be the light source, high bright and high CRI > 80, light decay under 3000h < 3%, lifespan as 50,000hrs.
- (3) High stability driver used, isolated constant current driver, with efficiency > 85%, LVD & EMC of CE certification approved.
- (4) CE & ROHS approved for the lamp, with 2-3 years warranty.
- (5) Surface or Recessed Mounted.

RY-CB0106-43W 43W LED Panel Light Technical Data

Parameter	Figure	Unit
Power Consumption	43W	W
Working Voltage	AC 85-277V	V
Working Frequency	50/60	Hz
PF	>0.95	-
Power Conversion Efficiency	>87%	-
Light Source	SMD 2835	-
CCT	3000 4000 6000	K
Luminous Flux	2900 3000 3100	Lm
Luminous Efficacy	70 75 80	Lm/W
CRI	80 80 80	
Viewing Angle	120	degree
Lifespan	30,000	hours
Working Temperature	-30 ~ +60	°C
Storage Temperature	-40 ~ +80	°C
Working Humidity	20% ~ 95%	
Storage Humidity	10% ~ 95%	

- Up to 30,000 hours lifespan.
- Over 60% power saving rate.

Application place

Widely used in office, school, factory, conference room, commercial and exhibition locations, hospital and other public places.

LED Panel Light Series



Part No.:

- (1) Materials: 0.5mm Thick SPCC Cold-roll Steel Sheets Body Material and PMMA plastic film for perfect light diffusion.
- (2) Light source: choose the best quality and high bright SMD 2835 to be the light source, high bright and high CRI > 80, light decay under 3000h < 3%, lifespan as 50,000hrs.
- (3) High stability driver used, isolated constant current driver, with efficiency > 85%, LVD & EMC of CE certification approved.
- (4) CE & ROHS approved for the lamp, with 2-3 years warranty.
- (5) Recessed Mounted.

RY-CB0106-80W 80W LED Panel Light Technical Data

Parameter	Figure	Unit
Power Consumption	80W	W
Working Voltage	AC 85-277V	V
Working Frequency	50/60	Hz
PF	>0.95	-
Power Conversion Efficiency	>87%	-
Light Source	SMD 2835	-
CCT	3000 4000 6000	K
Luminous Flux	7000 7100 7200	Lm
Luminous Efficacy	70 75 80	Lm/W
CRI	80 80 80	
Viewing Angle	120	degree
Lifespan	30,000	hours
Working Temperature	-30 ~ +60	°C
Storage Temperature	-40 ~ +80	°C
Working Humidity	20% ~ 95%	
Storage Humidity	10% ~ 95%	

- Up to 30,000 hours lifespan.
- Over 60% power saving rate.

Application place

Widely used in office, school, factory, conference room, commercial and exhibition locations, hospital and other public places.

LED Panel Light Series



Part No.:

- (1) Materials: 0.5mm Thick SPCC Cold-roll Steel Sheets Body Material and PMMA plastic film for perfect light diffusion.
- (2) Light source: choose the best quality and high bright SMD 2835 to be the light source, high bright and high CRI > 80, light decay under 3000h < 3%, lifespan as 50,000hrs.
- (3) High stability driver used, isolated constant current driver, with efficiency > 85%, LVD & EMC of CE certification approved.
- (4) CE & ROHS approved for the lamp, with 2-3 years warranty.
- (5) Recessed Mounted.

RY-PB0106-40W 40W LED Panel Light Technical Data

Parameter	Figure	Unit
Power Consumption	40W	W
Working Voltage	AC 85-277V	V
Working Frequency	50/60	Hz
PF	>0.95	-
Power Conversion Efficiency	>87%	-
Light Source	SMD 2835	-
CCT	3000 4000 6000	K
Luminous Flux	2900 3000 3100	Lm
Luminous Efficacy	70 75 80	Lm/W
CRI	80 80 80	
Viewing Angle	120	degree
Lifespan	30,000	hours
Working Temperature	-30 ~ +60	°C
Storage Temperature	-40 ~ +80	°C
Working Humidity	20% ~ 95%	
Storage Humidity	10% ~ 95%	

- Up to 30,000 hours lifespan.
- Over 60% power saving rate.

Application place

Widely used in office, school, factory, conference room, commercial and exhibition locations, hospital and other public places.

LED Panel Light Series



Part No.:

- (1) Materials: 0.5mm Thick SPCC Cold-roll Steel Sheets Body Material and PMMA plastic film for perfect light diffusion.
- (2) Light source: choose the best quality and high bright SMD 2835 to be the light source, high bright and high CRI > 80, light decay under 3000h < 3%, lifespan as 50,000hrs.
- (3) High stability driver used, isolated constant current driver, with efficiency > 85%, LVD & EMC of CE certification approved.
- (4) CE & ROHS approved for the lamp, with 2-3 years warranty.
- (5) Recessed Mounted.

RY-PB0106-45W 45W LED Panel Light Technical Data

Parameter	Figure	Unit
Power Consumption	45W	W
Working Voltage	AC 85-277V	V
Working Frequency	50/60	Hz
PF	>0.95	-
Power Conversion Efficiency	>87%	-
Light Source	SMD 2835	-
CCT	3000 4000 6000	K
Luminous Flux	4000 4200 4300	Lm
Luminous Efficacy	70 75 80	Lm/W
CRI	80 80 80	
Viewing Angle	120	degree
Lifespan	30,000	hours
Working Temperature	-30 ~ +60	°C
Storage Temperature	-40 ~ +80	°C
Working Humidity	20% ~ 95%	
Storage Humidity	10% ~ 95%	

- Up to 30,000 hours lifespan.
- Over 60% power saving rate.

Application place

Widely used in office, school, factory, conference room, commercial and exhibition locations, hospital and other public places.

LED Panel Light Series



Part No.:

- (1) Materials: 0.5mm Thick SPCC Cold-roll Steel Sheets Body Material and PMMA plastic film for perfect light diffusion.
- (2) Light source: choose the best quality and high bright SMD 2835 to be the light source, high bright and high CRI > 80, light decay under 3000h < 3%, lifespan as 50,000hrs.
- (3) High stability driver used, isolated constant current driver, with efficiency > 85%, LVD & EMC of CE certification approved.
- (4) CE & ROHS approved for the lamp, with 2-3 years warranty.
- (5) Recessed Mounted.

RY-PB0106-80W 80W LED Panel Light Technical Data

Parameter	Figure	Unit
Power Consumption	80W	W
Working Voltage	AC 85-277V	V
Working Frequency	50/60	Hz
PF	>0.95	-
Power Conversion Efficiency	>87%	-
Light Source	SMD 2835	-
CCT	3000 4000 6000	K
Luminous Flux	7000 7100 7200	Lm
Luminous Efficacy	70 75 80	Lm/W
CRI	80 80 80	
Viewing Angle	120	degree
Lifespan	30,000	hours
Working Temperature	-30 ~ +60	°C
Storage Temperature	-40 ~ +80	°C
Working Humidity	20% ~ 95%	
Storage Humidity	10% ~ 95%	

- Up to 30,000 hours lifespan.
- Over 60% power saving rate.

Application place

Widely used in office, school, factory, conference room, commercial and exhibition locations, hospital and other public places.

LED Grille Lamp Series



Part No.:

- (1) Materials: 0.5mm Thick SPCC Cold-roll Steel Sheets Body Material and PMMA plastic film for perfect light diffusion.
- (2) Light source: choose the best quality and high bright SMD 2835 to be the light source, high bright and high CRI > 80, light decay under 3000h < 3%, lifespan as 50,000hrs.
- (3) High stability driver used, isolated constant current driver, with efficiency > 85%, LVD & EMC of CE certification approved.
- (4) CE & ROHS approved for the lamp, with 2-3 years warranty.
- (5) Recessed Mounted.

RY-PD0116-36W 40W LED Grille Lamp Technical Data

Parameter	Figure	Unit
Power Consumption	40W	W
Working Voltage	AC 85-277V	V
Working Frequency	50/60	Hz
PF	>0.95	-
Power Conversion Efficiency	>87%	-
Light Source	SMD 2835	-
CCT	3000 4000 6000	K
Luminous Flux	2800 3000 3200	Lm
Luminous Efficacy	70 75 80	Lm/W
CRI	80 80 80	
Viewing Angle	120	degree
Lifespan	50,000	hours
Working Temperature	-30 ~ +60	°C
Storage Temperature	-40 ~ +80	°C
Working Humidity	20% ~ 95%	
Storage Humidity	10% ~ 95%	

- Up to 30,000 hours lifespan.
- Over 60% power saving rate.

Application place

Widely used in office, school, factory, conference room, commercial and exhibition locations, hospital and other public places.

LED Grille Lamp Series



Part No.:

(1) Materials: 0.5mm Thick SPCC Cold-roll Steel Sheets Body Material and PMMA plastic film for perfect light diffusion.

(2) Light source: choose the best quality and high bright SMD 2835 to be the light source, high bright and high CRI > 80, light decay under 3000h < 3%, lifespan as 50,000hrs.

(3) High stability driver used, isolated constant current driver, with efficiency > 85%, LVD & EMC of CE certification approved.

(4) CE & ROHS approved for the lamp, with 2-3 years warranty.

(5) Recessed Mounted.

**RY-PD0116-60W
60W LED Grille Lamp Technical Data**

Parameter	Figure	Unit
Power Consumption	60W	W
Working Voltage	AC 85-277V	V
Working Frequency	50/60	Hz
PF	>0.95	-
Power Conversion Efficiency	>87%	-
Light Source	SMD 2835	-
CCT	3000 4000 6000	K
Luminous Flux	4500 4700 4800	Lm
Luminous Efficacy	70 75 80	Lm/W
CRI	80 80 80	
Viewing Angle	120	degree
Lifespan	50,000	hours
Working Temperature	-30 ~ +60	°C
Storage Temperature	-40 ~ +80	°C
Working Humidity	20% ~ 95%	
Storage Humidity	10% ~ 95%	

- Up to 50,000 hours lifespan.
- Over 60% power saving rate.

Application place

Widely used in office, school, factory, conference room, commercial and exhibition locations, hospital and other public places.

LED Recessed Troffer Series



Part No.:

(1) Materials: 0.5mm Thick SPCC Cold-roll Steel Sheets Body Material and PC plastic film for perfect light diffusion.

(2) Light source: choose the best quality and high bright SMD 2835 to be the light source, high bright and high CRI > 80, light decay under 3000h < 3%, lifespan as 50,000hrs.

(3) High stability driver used, isolated constant current driver, with efficiency > 85%, LVD & EMC of CE certification approved.

(4) CE & ROHS approved for the lamp, with 2-3 years warranty.

(5) Recessed Mounted.

**RY-PE0116-40W
40W LED Recessed Troffer Technical Data**

Parameter	Figure	Unit
Power Consumption	40W	W
Working Voltage	AC 85-277V	V
Working Frequency	50/60	Hz
PF	>0.95	-
Power Conversion Efficiency	>87%	-
Light Source	SMD 2835	-
CCT	3000 4000 6000	K
Luminous Flux	2800 3000 3200	Lm
Luminous Efficacy	70 75 80	Lm/W
CRI	80 80 80	
Viewing Angle	120	degree
Lifespan	50,000	hours
Working Temperature	-30 ~ +60	°C
Storage Temperature	-40 ~ +80	°C
Working Humidity	20% ~ 95%	
Storage Humidity	10% ~ 95%	

- Up to 30,000 hours lifespan.
- Over 60% power saving rate.

Application place

Widely used in office, school, factory, conference room, commercial and exhibition locations, hospital and other public places.

LED Recessed Troffer Series



Part No.:

- (1) Materials: 0.5mm Thick SPCC Cold-roll Steel Sheets Body Material and PC plastic film for perfect light diffusion
- (2) Light source: choose the best quality and high bright SMD 2835 to be the light source, high bright and high CRI > 80, light decay under 3000h < 3%, lifespan as 50,000hrs.
- (3) High stability driver used, isolated constant current driver, with efficiency > 85%, LVD & EMC of CE certification approved.
- (4) CE & ROHS approved for the lamp, with 2-3 years warranty.
- (5) Recessed Mounted.

RY-PE0116-60W 60W LED Recessed Troffer Technical Data

Parameter	Figure	Unit
Power Consumption	60W	W
Working Voltage	AC 85-277V	V
Working Frequency	50/60	Hz
PF	>0.95	-
Power Conversion Efficiency	>87%	-
Light Source	SMD 2835	-
CCT	3000 4000 6000	K
Luminous Flux	4200 4500 4800	Lm
Luminous Efficacy	70 75 80	Lm/W
CRI	80 80 80	
Viewing Angle	120	degree
Lifespan	50,000	hours
Working Temperature	-30 ~ +60	°C
Storage Temperature	-40 ~ +80	°C
Working Humidity	20% ~ 95%	
Storage Humidity	10% ~ 95%	

- Up to 30,000 hours lifespan.
- Over 60% power saving rate.

Application place

Widely used in office, school, factory, conference room, commercial and exhibition locations, hospital and other public places.

LED Ceiling Light Series



XR300-15H 15W LED Ceiling Light Technical Data

Parameter	Figure	Unit
Power Consumption	15W	W
Working Voltage	AC 85-277V	V
Working Frequency	50/60	Hz
PF	>0.95	-
Power Conversion Efficiency	>87%	-
Light Source	SMD 2835	-
CCT	3000 4000 6000	K
Luminous Flux	1200 1250 1300	Lm
Luminous Efficacy	80 83 85	Lm/W
CRI	80 80 80	
Viewing Angle	120	degree
Lifespan	50,000	hours
Working Temperature	-30 ~ +60	°C
Storage Temperature	-40 ~ +80	°C
Working Humidity	20% ~ 95%	
Storage Humidity	10% ~ 95%	

- (1) LAMP BODY: Integration led to absorb dome light, simple and elegant
- (2) PC COVER: Heat-resisting, high anti-extrusion capacity.
- (3) ALUMINUM PLATE: Using SMD 2835 LED, high brightness long life, low light decay.
- (4) DRIVER: Intelligent IC chip constant current, long life capacitors.



- Up to 50,000 hours lifespan.
- Over 60% power saving rate.

Application place

Widely used in bedroom, hospitals, sitting room, schools, supermarkets and other places of indoor lighting places.

LED Ceiling Light Series



**XR400-15H
15W LED Ceiling Light Technical Data**

Parameter	Figure	Unit
Power Consumption	15W	W
Working Voltage	AC 85-277V	V
Working Frequency	50/60	Hz
PF	>0.95	-
Power Conversion Efficiency	>87%	-
Light Source	SMD 2835	-
CCT	3000 4000 6000	K
Luminous Flux	1200 1250 1300	Lm
Luminous Efficacy	80 83 85	Lm/W
CRI	80 80 80	
Viewing Angle	120	degree
Lifespan	50,000	hours
Working Temperature	-30~+60	°C
Storage Temperature	-40~+80	°C
Working Humidity	20%~95%	
Storage Humidity	10%~95%	

- (1) LAMP BODY: Integration led to absorb dome light, simple and elegant
- (2) PC COVER: Heat-resisting, high anti-extrusion capacity.
- (3) ALUMINUM PLATE: Using SMD 2835 LED, high brightness long life, low light decay.
- (4) DRIVER: Intelligent IC chip constant current, long life capacitors.

CE RoHS

- Up to 50,000 hours lifespan.
- Over 60% power saving rate.

Application place

Widely used in bedroom, hospitals, sitting room, schools, supermarkets and other places of indoor lighting places.

LED Ceiling Light Series



**XR350-15H
15W LED Ceiling Light Technical Data**

Parameter	Figure	Unit
Power Consumption	15W	W
Working Voltage	AC 85-277V	V
Working Frequency	50/60	Hz
PF	>0.95	-
Power Conversion Efficiency	>87%	-
Light Source	SMD 2835	-
CCT	3000 4000 6000	K
Luminous Flux	1200 1250 1275	Lm
Luminous Efficacy	80 83 85	Lm/W
CRI	80 80 80	
Viewing Angle	120	degree
Lifespan	50,000	hours
Working Temperature	-30~+60	°C
Storage Temperature	-40~+80	°C
Working Humidity	20%~95%	
Storage Humidity	10%~95%	

- (1) LAMP BODY: Integration led to absorb dome light, simple and elegant
- (2) PC COVER: Heat-resisting, high anti-extrusion capacity.
- (3) ALUMINUM PLATE: Using SMD 2835 LED, high brightness long life, low light decay.
- (4) DRIVER: Intelligent IC chip constant current, long life capacitors.

CE RoHS

- Up to 50,000 hours lifespan.
- Over 60% power saving rate.

Application place

Widely used in bedroom, hospitals, sitting room, schools, supermarkets and other places of indoor lighting places.

Energy-saving lamps

Spiral Lamp

Characteristics and Applications: Spiral shape in design, has excellent Luminous output. Advanced electronic circuit to ensure long life. It is the ideal lighting source for the broad room. The lamp life is 8 times longer than incandescent lamps. More efficient in energy saving. Applications: residences, offices, restaurants, hotels, shops.



S1851

Energy-saving lamps

T3/T4/T5-Spiral Lamp

Energy saving lamps

operating voltage: 110-130V/50-60Hz
or 220-240/50-60Hz

Fluorescent tube diameter: 14.5mm or 17mm or 9mm

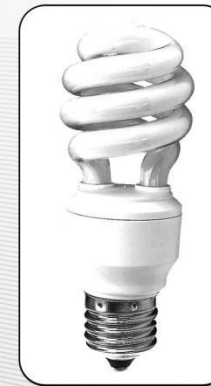
Color temperature: 2700K-6800K

Color rendering index: >80

Power factor (pf): <0.60 or >0.98

Lifetime: 6000-8000 Hours

Measured according to IEC968&969 standards



S0321



S0631



S2042/S2052

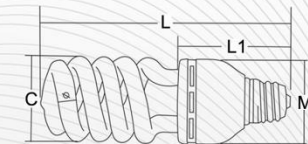
Base available:



E40

E27

B22

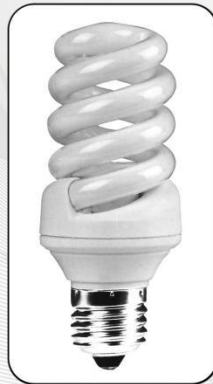


Item	Watts(W)	Lumen(Lm)	CRI(Ra)	L-M-L1-C-Ø(MM)	Lifespan(H)
S0321	9W	450	≥82	110-44-65-42-φ9	6000-10000
S0321	11W	560	≥82	118-44-65-42-φ9	6000-10000
S0321	13W	685	≥82	123-44-65-42-φ9	6000-10000
S0321	15W	790	≥82	128-44-65-42-φ9	6000-10000
S0631	18W	922	≥82	136-54-75-58-φ12	6000-10000
S0631	20W	1080	≥82	143-54-75-58-φ12	6000-10000
S0631	23W	1242	≥82	148-54-75-58-φ12	6000-10000
S0631	26W	1450	≥82	160-54-75-58-φ12	6000-10000
S2052	65W	4200	≥82	220-88-110-76-φ17	6000-10000
S2052	85W	5000	≥82	230-88-110-76-φ17	6000-10000

Energy-saving lamps



S221



S0522



S1032

T2/T3/T4-Spiral Lamp

Energy saving lamps

operating voltage: 110-130V/ 50-60Hz
or 220-240/ 50-60Hz

Fluorescent tube diameter: 7.5mm or 12mm or 9mm

Color temperature: 2700K-6800k

Color rendering index: >80

Power factor (pf) : <0.60 or >0.98

Lifetime: 6000-8000Hours

Measured according to IEC968&969 standards

Base available:



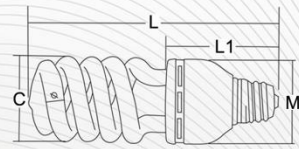
E40



E27

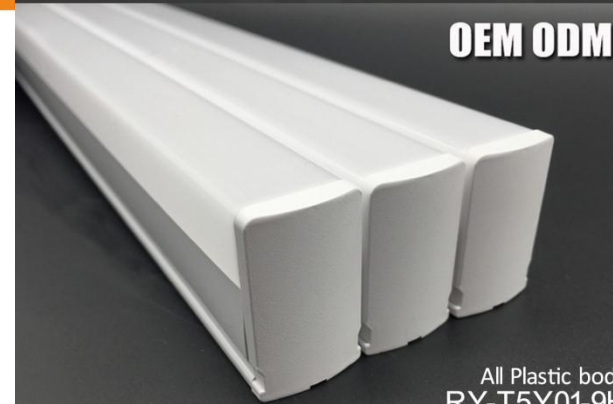


B22



Item	Watts(W)	Lumen(Lm)	CRI(Ra)	L-M-L1-C-Ø(MM)	Lifespan(H)
S2211	7W	315	≥82	80-40-48-42-φ7.5	6000-10000
S2211	8W	360	≥82	85-40-48-42-φ7.5	6000-10000
S2211	10W	450	≥82	99-40-48-42-φ7.5	6000-10000
S0522	11W	550	≥82	110-48-66-42-φ9	6000-10000
S0522	13W	650	≥82	120-48-80-42-φ9	6000-10000
S0522	15W	750	≥82	130-48-80-42-φ9	6000-10000
S0522	18W	990	≥82	140-48-80-42-φ9	6000-10000
S1032	20W	1000	≥82	135-61-85-58-φ12	6000-10000
S1032	23W	1200	≥82	145-61-85-58-φ12	6000-10000
S1032	26W	1300	≥82	155-61-85-58-φ12	6000-10000

LED Linear Light Series



OEM ODM

All Plastic body
RY-T5Y01-9H



OEM ODM

Aluminum with PC cover
RY-T5Y02-9H



OEM ODM

Aluminum with PC cover
RY-T5Y03-9H



OEM ODM

Aluminum with PC cover
RY-T5Y04-9H



- Up to 50,000 hours lifespan.
- Over 60% power saving rate.

Specifications

ITEM	RY-T5Y01-9H	RY-T5Y02-9H	RY-T5Y03-9H	RY-T5Y04-9H
INPUT VOLTAGE	AC85-265V 50/60HZ	AC85-265V 50/60HZ	AC85-265V 50/60HZ	AC85-265V 50/60HZ
PF	>0.9	>0.9	>0.9	>0.9
WATT	9W	9W	9W	9W
LUMEN	800LM-850LM	800LM-850LM	800LM-850LM	800LM-850LM
COLOR	WW/NW/CW	WW/NW/CW	WW/NW/CW	WW/NW/CW
CRI	>80	>80	>80	>80
TYPE	48PCS SMD2835	48PCS SMD2835	48PCS SMD2835	48PCS SMD2835

Part NO.

- (1) Constant current driver
- (2) WW:2700-3300K NW:4000-4500K CW:6000-6500K
- (3) Aluminum with PC cover & All Plastic body
- (4) Widely used in office, school, factory, conference room, commercial and exhibition locations, hospital and other public places.