

**JS-LYTE**  
**嘉森光电**

让世界遇见 **嘉森**

我们用心做好每一个产品

*Let the world meet Jiasen. We do our best to make every product.*



地址：广州市白云区石井镇滘心村瓦窑工业区  
手机：13711632625  
电话：020-36370857  
QQ:1933875662/1310366462  
邮箱：1933875662@qq.com  
网站：http://www.jssligh.com

Address: Guangzhou Baiyun District Shijing  
Kau xincun wa yao industrial zone  
Tel: 020-36370857  
QQ:1933875662/1310366462  
Mailbox: 1933875662@qq.com  
Website: http://www.jssligh.com



**全国统一热线：400-9013-168**

**广州嘉森光电科技有限公司**  
GUANGZHOU JIASEN PHOTOELECTRIC TECHNOLOGY CO.,LTD

酒吧智能KTV系统整体  
灯光方案解决专家

# 企业简介 Company profile

广州市嘉森光电科技有限公司，是集研发，生产，销售，服务于一体的生产型企业，主要生产舞台灯光设备，摇头灯系列、追光灯系列、激光灯系列、LED大功率系列、频闪灯系列、LED舞台效果、烟机烟油、演出器材、控制台系列、配件系列等。广泛应用于舞台、舞厅、KTV包房、电台、电视台、歌剧院及影视娱乐等场所。无论在产品种类，质量工艺，还是生产能力，技术含量，都积累了丰富的经验，为不同层次不同需求的客户提供优质的产品和服务。

公司不断地进行新产品的开发，对品质持续不断地追求进步与超越，提供完善的售前、售后服务体系，尽最大努力为客户提供性价比优良的产品和周到的服务。产品被广泛地应用于各行业，并相继出口到印度、巴西、西亚、欧美等国家和地区，获得了广泛的认可和赞许。

今后，我们除了不断创新，开发新的高新品种之外，我们将继续专注于现有的产品，进一步严格材料控制，严格成本控制，严格品质控制，进一步优化售后服务。同时，我们也热忱为广大国内外客户提供 OEM 服务！

Guangzhou Jiasen Photoelectric Technology Co., Ltd. is set research and development, production, sales, service in one of the production-oriented enterprises, mainly in the production of stage lighting equipment, shaking his head lamp series, chasing lights series, light series, led high power series, strobe lights series, led stage effect, cigarette smoke, performance equipment, console series, accessories series. Widely used in stage, dance hall, KTV rooms, radio, television, opera and Studio Entertainment etc.. Whether in product type, quality process, or production capacity, technical content, have accumulated rich experience, for different levels of different needs of customers to provide quality products and services. Companies continue to develop new products, the quality of continuous pursuit of progress and beyond, to provide a sound pre and after-sales service system, to do our best to provide customers with cost-effective products and thoughtful service. Products are widely used in various industries, and have been exported to India, Brazil, West Asia, Europe and the United States and other countries and regions, has received a wide range of recognition and praise. In the future, we in addition to continuous innovation, development of new high-tech varieties, we will continue to focus on existing products, further strict material control, strict cost control, strict quality control, to further optimize the after-sales service. At the same time, we are also dedicated to the vast number of customers at home and abroad to provide OEM services!

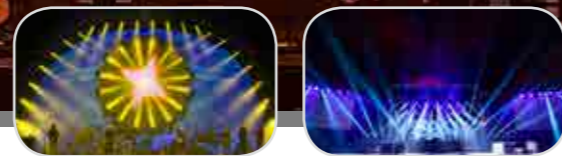


	<b>摇头光束灯系列</b> Moving Beams light series	01-04
	<b>LED 摇头灯系列</b> Moving Beams light series	05-07
	<b>帕灯系列</b> Par light series	08-10
	<b>COB 面光灯系列</b> COB surface light series	11-12
<b>目录</b> <b>CONTENTS</b>		
	<b>洗墙灯系列</b> Wall Washer Series	13
	<b>探照灯系列</b> Searchlight series	14
	<b>追光灯系列</b> Follow light series	15
	<b>舞台特效系列</b> Stage effects series	16
	<b>激光灯系列</b> Laser light series	17-18
	<b>控制台系列</b> Console Series	19-20



## JS-B350TA

### 17R/15R 350W/330W 3合1 光束图案灯 17R/15R 350W/330W 3in1 Beam Pattern Light



#### ● 技术参数/Technical parameters

电压: AC100-240V 50/60Hz  
功率: 500W  
光源: OSRAM SIRIUS HRI 350XL 或 YODN MSD 350 17R  
镇流器: 电子镇流器  
通道: 16/24 两种通道模式  
DMX512 接收  
颜色: 一个颜色盘, 14 个颜色片 + 白光  
图案: 一个固定图案盘, 15 个图案 + 白光  
一个旋转图案盘, 9 个图案 + 白光  
棱镜: 棱镜: 一个 8 棱镜和一个梯形棱镜, 可叠加  
雾化: 渐变雾化, 染色角度 5-30 度  
频闪: 0.5-14 次 / 秒, 多种频闪效果  
光学: 高精度玻璃光学透镜, 线性变焦 0-20 度  
运动角度: 水平 540 度, 8/16Bit 解析度  
垂直 270 度, 8/16Bit 解析度  
防护等级: IP20  
净重: 19.5Kg  
包装尺寸: 480\*450\*570mm

Voltage: AC100-240V 50/60Hz  
Power: 500W  
Light source: OSRAM SIRIUS HRI 350XL or YODN MSD 350 17R  
Ballast: Electronic Ballast  
Channel: 16/24 two channel modes  
DMX512 reception  
Color: One color plate, 14 color plates + white light  
Pattern: a fixed pattern plate, 15 patterns + white light  
One rotary pattern disk, 9 patterns + white light  
Prism: prism: an 8 prism and a trapezoidal prism, can be superimposed  
Atomization: Gradient atomization, dyeing angle 5-30 degrees  
Strobe: 0.5-14 times / second, a variety of strobe effects  
Optical: high-precision glass optical lens, linear zoom 0-20 degrees  
Movement angle: horizontal 540 degrees, 8/16 Bit resolution  
270 degrees vertically, 8/16 Bit resolution  
Protection class: IP20  
Net weight: 19.5kg  
Packing size: 480\*450\*570mm

## 摇头光束灯系列 / Moving Beams light series

### 350W/440W 摇头防水光束灯

350W/440W shake head waterproof beam lamp.

#### JS-B350D A/B



#### ● 技术参数/Technical parameters

输入电压: AC90-240V 50-60Hz  
光源功率: 350W 整机功率: 500W  
光源理论寿命: 1500 小时以上 灯泡色温: 7800K  
调焦: 线性电动调焦  
其中色片色温: 2500K、3200K 二种色温可选  
调光: 调光平滑无闪烁  
光源: YODN MSD 350 镇流器: YODN MSD R17  
频闪: 独立频闪、0.5-20 次 / 秒可调颜色 / 图案 / 效果  
色盘: 11 个色片 (可定制 CMY) 光束角度: 2°  
固定图案盘: 12+1+ 可双向抖动、动画、流水效果  
棱镜: 16 棱镜 + 排镜 (标配, 可定制)  
控制方式: DMX 512, 声控, 自走, 主从机  
旋转角度: X 轴 540 度、Y 轴 275 度可自动校正定位  
通道: 标准 16 通道, 带 CMY 20 通道  
灯具材料: 采用高强度 PA66 具有耐高温, 抗老化耐磨, 轻便防摔等特性  
防护等级: IP55  
灯体尺寸: 418\*378\*620(mm) 22kg  
纸箱尺寸: 440\*420\*810mm 24kg

Voltage: AC90-240V 50-60Hz  
Lamp: SIRIUS HRI 350W S  
Ballast: YODN MSD 350R17  
Power: 500W  
Average lifespan: 1500 hours  
Focus: linear electronic focus  
Lamp temperature: 7800K  
IP Rate: IP54  
Dimmer: Super smooth dimmer  
Color temperature: 2500K、3200K (Optional)  
Strobe: Independent strobe, 0.5 to 20 times/ seconds  
Color wheel: 11 color filter wheel (can order with CMY)  
Beam angle: 2°  
Fixed gobo wheel: 12+1+animation range  
Prism: 16 facet +Ladder effect(standard)  
Control system: DMX, Master/Slave mode  
Pan/TiltPan: 540 degree, Tilt: 275 degree  
Channel: Simple channel: 16 CHS, (24CH FOR CMY)  
Size: 418\*378\*620(mm) 22kg  
Carton case: 440\*420\*810mm 24kg

### R18/R17 380W/350W 菱镜王光束灯 R18/R17 380W/350w prism king beam light

#### JS-B380



#### ● 技术参数/Technical parameters

额定电压: AC110V-240V, 50/60Hz  
光源规格: 380/350W  
色温校正: 6700K/4500K/3200K  
线性调光: 机械线性调光 0-100  
雾化功能: 支持雾化效果  
通道功能: 16/20/24 通道 (3 通道模式)  
放大功能: 支持 2 倍放大  
固定颜色: 14 个色片 + 白光 (可半色效果)  
静态图案: 1 个固定盘 (18 个固图) 1 个效果盘 (4 种效果)  
菱镜: 5 个棱镜 (32 棱镜 24 蜂窝棱镜 8 棱镜 2 个 6 排镜)  
色片: 1 个六色片 (可做七彩效果)  
尺寸: 590\*275\*365MM  
重量: 约 18KG(裸灯)

Rated voltage: AC110V-240V, 50/60Hz  
Light Source Specifications: 380/350W Light Bulb  
Color temperature correction: 6700K/4500K/3200K  
Linear Dimming: Mechanical Linear Dimming 0-100  
Atomization function: support atomization effect  
Channel function: 16/20/24 channels (3 channels mode)  
Zoom function: support 2 times magnification  
Fixed color: 14 color chips + white light (half-color effect)  
Static pattern: 1 fixed disk (18 solid images) 1 effect disk (4 effects)  
Mirror: 5 Prisms (32 Prisms 24 Honeycomb Prisms 8 Prisms 2 6 Row Mirrors)  
Color film: 1 six-color film (can do colorful effects)  
Size: 590\*275\*365MM  
Weight: about 18KG (naked light)

## 摇头光束灯系列 / Moving Beams light series

### 350W/330W 电脑摇头光束灯

350W/330W computer shake head light

#### JS-B350A/B



#### ●技术参数/Technical parameters

电压: AC100-240V 50/60Hz  
功率: 500W  
光源: OSRAM SIRIUS HRI 350XL  
或 YODN MSD 350W  
镇流器: 电子镇流器  
通道: 16 通道模式  
颜色: 一个颜色盘, 14 个颜色片 + 白光  
图案: 一个固定图案盘, 可选加六个玻璃图案  
棱镜: 两个可旋转棱镜, 一个 8 棱镜和一个 24 棱镜  
雾化: 渐变雾化, 染色角度 5-30 度  
频闪: 0.5-14 次 / 秒, 多种频闪效果  
光学: 高精度玻璃光学透镜, 线性变焦 0-20 度  
运动角度: 水平 540 度, 8/16Bit 解析度,  
垂直 270 度, 8/16Bit 解析度  
特点: 水平垂直采用光电复位, 当发生误动后可  
自动检索复位; 步进电机使运动更快更平滑  
内置过热保护和智能散热系统, 远程控制灯泡开关及功率  
防护等级: IP20 净重: 18Kg

Voltage: AC100-240V 50/60Hz  
Power: 500W  
Light source: OSRAM SIRIUS HRI 350XL  
Or YODN MSD 350W  
Ballast: Electronic ballast  
Channel: 16-channel mode  
Color: One color plate, 14 color plates + white light  
Illustration: A fixed pattern disk, Optional plus six glass designs.  
Prism: two rotatable prisms, one 8 prism and  
A 24-prism  
Fog: Gradient atomization, dyeing angle 5-30 degrees  
Strobe: 0.5-14 times / second, a variety of strobe effects  
Optics: high-precision glass optical lens, linear zoom 0-20 degrees  
Movement angle: horizontal 540 degrees, 8/16 Bit resolution,  
270 degrees vertical, 8/16 Bit resolution  
Features: Photoelectric reset is used horizontally and vertically.  
Automatic retrieval reset; stepper motor makes movement faster and smoother  
Built-in overheat protection and intelligent cooling system, remote control bulb  
open  
Off and power  
Protection class: IP20 Net weight: 18Kg

### 260W 超级光束灯

260W super beam lamp

#### JS-B260A/B



#### ●技术参数/Technical parameters

额定电压: AC110V-240V, 50/60Hz  
光源规格: 260W 新型一体灯泡  
色温校正: 6700K/4500K/3200K  
线性调光: 机械线性调光 0-100  
固定颜色: 13 个色片 + 白光 [可半色效果]  
静态图案: 13 个固图 + 白光  
菱镜: 24 蜂巢棱镜、16 棱镜 (双棱镜可叠加, 可双向独立旋转)  
色片: 1 个六色片 (可做七彩效果)  
雾化: 1 个独立的雾化效果, 光斑柔和自然控制  
通道: 18 通道  
尺寸: 32\*22\*58CM (长 \* 宽 \* 高)  
灯体净重约: 14.8KG

Rated voltage: ac110v-240v, 50/60hz.  
Light source specification: 260W new integrated bulb.  
Color temperature correction: 6700K/4500K/3200k.  
Linear dimming: mechanical linear adjustment 0~ 100.  
Fixed color :13 color chips + white light [half color effect]  
Static pattern :13 solid images + white light,  
Mirror: 24 honeycomb prism and 16 prism (double prism can be superposed, can  
be rotated independently)  
Color film: one six-color film (can make seven color effects)  
Atomization: 1 independent atomization effect, light spot soft natural control.  
Channel :18 channels  
Size: 32\*22\*58CM(length \* width \* height)  
Net weight: 14.8KG.

### 7R/5R 230W 图案光束灯

7R/5R 230W design beam lamp

#### JS-B230A/B



## 摇头光束灯系列 / Moving Beams light series

#### ●技术参数/Technical parameters

额定电压: AC100V-240V ± 10%, 50Hz ~ 60Hz  
总功率: 350W 灯泡功率: 230W  
光源型号: OSRAM230W  
旋转角度: 水平方向 540°, 垂直方向 270°  
光束角度: 0° - 4° 控制模式: 自走、主从、DMX  
产品功能:  
1、通道: 16 个 DMX 通道;  
2、频闪: 频闪速度高达 13 次 / 秒, 并可选择随机频闪;  
3、调光: 0% ~ 100% 线性调光;  
4、图案盘: 1 个固定图案盘含 6 片特效定制玻璃图 + 11 个固图。1 个固定图案盘含 17 个图案;  
5、颜色盘: 14 色 + 白颜色盘;  
6、效果轮: 一个可旋转的 16 棱镜, 效果移动, 雾化功能;  
7、调焦: 带线性调焦功能, 可 2 米至无限调节图案清晰度。  
8、AC/DC 开关电源。功率因素高达 0.99, THD < 20%。支持灯泡功率调整, 灯泡耗电自动减  
少 50%, 延长灯泡寿命, 提高灯具稳定性;  
9、水平垂直: 水平和垂直都用三相电机驱动, 水平扫描 540° 垂直扫描 270°, 拥有 8bit 和  
16bit 的扫描精度, 能顺滑精确定位, 并可调节扫描的速度。  
色温: 光通量为 8200lm, 色温可达 8500K  
产品尺寸: 410 × 340 × 480mm 产品重量: 20Kg

Rated voltage: AC100V ~ 240V ± 10%, 50Hz ~ 60Hz  
Total power: 350 W Lamp Power: 230W  
Light Model: OSRAM230W  
Rotation angle: horizontal 540°, 270° vertical  
Beam angle: 0° - 4° Control mode: Auto, master-slave, DMX  
Product Features:  
1, Channel: 16 DMX channels;  
2, strobe: strobe speeds up to 13 times / sec, and can choose random strobe;  
3, dimming: 0% to 100% linear dimmer;  
4, Gobo: One fixed gobo effects custom glass containing 6 FIG + 11 solid FIG. One fixed  
gobo wheel with 17 gobos;  
5, the color wheel: 14 colors + white color wheel;  
6, the effect wheel: a rotatable prism 16, the effect of moving the atomizing function;  
7, Focus: linear focus with function, 2 m to infinity adjustment pattern clarity.  
8, AC / DC switching power supply. Power factor up to 0.99, THD < 20%. Support lamp  
power adjustment, automatic lamp power consumption reduced by 50%, extend lamp  
life, increase lamp stability;  
9, the horizontal and vertical: horizontal and vertical are three-phase motor drive,  
horizontal scan 540° vertical scanning 270°, 8bit and 16bit have the scanning  
accuracy, smooth and precise positioning, and can adjust the scanning speed.  
Color temperature: luminous flux of 8200lm, color temperature up to 8500K  
Product size: 410 × 340 × 480mm  
Weight: 20Kg

### 260W 光束图案灯 (双图 / 双棱镜)

260W beam pattern light (double graph/biprism)

#### JS-B260T



#### ●技术参数/Technical parameters

开关电源可选: AC90-240V, 50/60HZ  
功率: 300W 灯泡: 飞利浦 260W  
色温: 8500K 平均寿命: 2000h  
镇流器: 电子镇流器  
光学器件: 3 片透镜式镜头组, 变焦 0° - 3.9°  
电子  
聚焦: 20 米处, 50000LUX  
通道模式: 16 个国际标准 DMX512 通道  
水平扫描: 540° (16bit 精度扫描) 电子纠错  
垂直扫描: 250° (16bit 精度扫描) 电子纠错  
色片盘: 14 个插拔式色片 + 白光, 带双向旋转  
的彩虹效果  
旋转图案盘: 17 个插拔式的旋转图案片 + 白圆,  
带图案抖动和图案任意定位功能。  
棱镜盘: 24 棱镜和横排 8 棱镜, 可正反方向旋转,  
并具有棱镜定位功能  
频闪: 双频变频频率最高可以 13 次每秒, 并  
可选择随机频闪及脉冲频闪  
调光: 0%~100% 线性调光  
雾化: 0%~100% 线性雾化红色 LED 点阵显示  
的显示屏

Voltage: 90-240V 50/60 Hz  
Power: 300W  
Discharge lamp .with a short arc burner in a  
reflector system  
- Light source: 1PCS X 260W MSD Platinum 8R  
- Color temperature: 8,500 K  
- Average life: 2,000 h  
OPTICS  
3-lens optical group combination  
Focus: electronic  
Light output at 20 meters (65 feet): 59,760 lux  
CONTROL AND PROGRAMMING  
16/20CH DMX 512 control channels  
Display: LCD display  
Pan/Tilt Resolution: 16 bit  
Movement control: vectorial  
DMX signal connection: 3 PIN output  
Aluminium structure with die-cast plastic cover.  
Two side handles for transportation.  
Device locking PAN and TILT mechanisms for  
transportation and maintenance.

### 7R/5R 滚筒扫描灯

7R/5R drum scanning lamp

#### JS-BS230



#### ●技术参数/Technical parameters

额定电压: AC90V-240 50/60Hz  
光源: MSD Platinum 7R (色温: 8,000k)  
额定功率: 250W  
光束角度: 3.3°  
使用寿命: 约 2,000 小时  
控制信号: 国际标准 MSX 512 信号, 3 芯接口  
通道数: 10CH  
图案: 1 个固定图案轮, 13 个图案 + 白光  
颜色系统: 1 个颜色轮: 10 个颜色片 + 白光,  
可做双向变速彩虹效果  
显示: LED 显示屏  
灯体尺寸: 510 × 200 × 170 (mm)  
防护等级: IP20, 内置过热和触发高压保护  
净重: 7.5kg

Rated voltage: AC90V-240 50/60Hz  
Source: MSD Platinum 7R (color temperature:  
8,000 k)  
Rated power: 250W Beam angle: 3.3°  
Life: about 2,000 hours  
Control signal: international standard MSX 512  
signal, 3-pin interface  
Channels: 10CH  
Pattern: one fixed gobo wheel, 13 gobos +  
Color System: a color wheel: 10 colors + white,  
rainbow effect do bidirectional speed  
Display: LED display  
Lamp Size: 510\*200\*170 (mm)  
Protection class: IP20, built-in thermal and high  
voltage protection  
Net weight: 7.5kg

## LED 摇头灯系列 /LED moving head light series

### JS-LB001



### LED 200W 三合一光束图案灯

LED 200W three-in-one beam pattern lamp

技术参数 /Technical Parameters

电源: AC110-240V, 50/60Hz  
光源: LED200W  
调光: 0-100%线性调节  
调焦: 线性调焦  
变焦: 线性变焦  
光束角度: 2度-38度  
光学镜头: 高精度胶合光学镜头组合  
颜色: 1个颜色盘, 9个颜色+白光, 彩虹效果速度可调, 半步颜色效果  
图案: 1个固定图案盘, 10个图案+白光, 可双向变速旋转  
旋转盘: 1个旋转图案盘, 7个可更换图案盘+白光, 图案在流水由慢到快  
棱镜盘: 内置一个棱镜盘, 可正反向旋转切换效果  
水平扫描: 540度(160bit精度扫描)电子纠错  
垂直扫描: 270度(160bit精度扫描)电子纠错  
显示: 彩色液晶显示屏

Power supply: AC110-240 - v, 50/60 Hz  
Light source: LED200W  
Dimming: 0-100% linear adjustment. Focus: linear focus.  
Zoom: linear zoom.  
Beam Angle: 2 degrees -38 degrees.  
Optical lens: a combination of high - precision colloidal optics.  
Color: 1 color disk, 9 colors + white light, rainbow effect speed adjustable, half step color effect.  
Fixed figure: 1 fixed pattern plate, 10 patterns + white light, reversible rotation.  
Rotary disc: 1 rotating pattern plate, 7 replaceable pattern plates + white light, the pattern of flowing water from slow to fast.  
Prismatic disc: it has a mirror disk built in, which can be turned to rotate.  
Horizontal scanning :540 degree (160bit accuracy scan) electronic error correction.  
Vertical scan :270 degree (160bit accuracy scan) electronic error correction. Display: color LCD screen.

### JS-LB002



### 150W LED 光束灯

150W LED Beam Light

技术参数 /Technical Parameters

电压: AC90-240V, 50/60Hz  
额定功率: 200W  
光源: 150W 高亮度白光 LED  
DMX 通道: 13CH  
色温: 8000K  
控制模式: DMX 模式, 主从模式, 自走, 声控  
显示: 数码液晶显示  
光学: 光学玻璃镜头  
集中: 光学聚焦  
颜色盘: 11 种颜色 + 白光, 调色效果  
图案盘: 17 种图案片 + 白光, 高速抖动效果  
频闪: 机械快门 (1-13 次 /s) 和高速频闪效果可调  
8 棱镜 + 旋转  
水平 540° (16 位) 电动校正, 垂直 270° (16 位) 电动校正  
灯体: 31.5X20.5X44.5 CM

Voltage: AC90-240V 50/60Hz  
Power: 200W  
Light Source: 150W High Output White LED  
Control Signal: DMX 512, master-slave and sound activated or auto operation  
Control Channel: 13 DMX Channels USITT DMX-512  
Beam Angle 15° , focus function  
Prism: 8 Prism  
IP 20 protection rating  
Color Wheel: 17 colors + open, Variable direction rainbow effect with speed adjustable  
Gobo Wheel: 17 gobos + open  
Dimmer: 0-100% linear regulator Focus  
Strobe: Strobe two-piece, adjustable speed strobe (0.5-10 times/sec)  
Rotation angle: Horizontal 540° , vertical 270°

### JS-LB003



### 25 眼无极矩阵光束灯

25-eye infinite matrix beam light

技术参数 /Technical Parameters

输入电压: AC100-240V, 50/60Hz  
额定功率: 500W  
光源: 25 颗 4-in-1 LED  
效果: 柔光效果或者光束效果任选  
光源寿命: 100,000 小时  
颜色范围: 1670 万种颜色 0-100% 饱和度可调  
通道模式: 8CH/80CH DMX 模式  
防护等级: IP20  
控制模式: DMX512 模式、主从机模式、自走模式、声控模式

Input voltage: AC100-240V, 50 / 60Hz  
Rated power: 800W  
Source: 25 4-in-1 LED  
Effect: soft effect or beam effect optional  
Source life: 100,000 hours  
Beam angle: 2 degrees  
Color range: 16.7 million colors 0 to 100% saturation adjustable  
Channel mode: 8CH / 80CH 3 种 DMX mode  
Protection: IP20  
Control mode: DMX512 mode, master and slave mode, self-propelled mode, voice mode

### JS-LB004



### 19 颗 15W LED 蜂眼摇头灯

19Pcs\*15W LED bee eye head light

技术参数 /Technical Parameters

电压: AC90-240V 50-60Hz  
功率: 450W  
光源: 19 颗 OSRAM 四合一 15W 高亮度灯珠  
寿命: 100000 小时  
光束角度: 4-60°  
颜色: RGBW 无极混色, 色温可从 8000K 到 2500K 精确调整  
调光: 0-100%线性调光系统  
水平扫描: 540度+16 bit 微调  
垂直扫描: 250度+16 bit 微调  
控制信号: DMX512, 主从机, 声控或者自走程序  
显示屏: 蓝色液晶屏  
产品尺寸: 520\*420\*560mm  
净重: 15Kg

Voltage: AC90-240V 50-60Hz  
Power: 450W  
Source: Four in 19 OSRAM 15W high brightness lamp beads  
Life: 100,000 hours  
Beam angle: 4-60°  
Color: RGBW Promise color, color temperature can be precisely adjusted from 8000K to 2500K  
Dimming: 0-100% linear dimming system  
Horizontal scan: 540 degrees +16 bit trimming  
Vertical scan: 250 degrees +16 bit trimming  
Control signal: DMX512, master-slave, voice or self-propelled procedures  
Display: Blue LCD  
Product size: 520 \* 420 \* 560mm  
Weight: 15Kg

### JS-LB005



### 16 颗无极幻影灯

16 Promise Phantom Lights

技术参数 /Technical Parameters

输入电压: 100-240VAC / 50-60Hz  
光源: 16 个 15W RGBW 4in1 LED  
功率: 250W  
控制模式: DMX512 / 主从 / 声音 / 自动  
DMX 通道: 18/20 / 80CHs  
显示器: LCD 显示器  
LED: 点控制 PAN: 无限旋转  
倾斜: 无限旋转 平移 / 倾斜分辨率: 16 位  
连接: 3pin (5pin) 数据输入 / 输出, PowerCon 输入 / 输出  
产品尺寸: 44 \* 30 \* 46 厘米  
净重: 16kgs  
毛重: 19.5kgs (1pcs / 箱)

Input voltage :100-240VAC/50-60Hz  
Light Source:16pcs 15W RGBW 4in1 LEDs  
Power supply: 250W  
Control Mode: DMX512/master-slave/sound/auto  
Beam Angel: 3°  
DMX Mode:18/20/80CHs  
Display:LCD display  
LEDs:Dot controlled  
PAN:infinite rotation  
TILT:infinite rotation  
Pan/tilt resolution: 16 bit  
Connection: 3pin(5pin) Data in/out, PowerCon in/out  
Product size: 44\*30\*46 cm  
Net Weight: 16kgs  
Gross Weight :19.5kgs(1pcs/CTN)

## LED 摇头灯系列 /LED moving head light series

### JS-LB006A/B



### 19 颗调焦染色摇头灯

19Pcs focusing moving head light

技术参数 /Technical Parameters

输入电压: AC100-240V, 50-60Hz  
消耗功率: 260W  
光源: 19 颗 12W 高亮 4 合 1 灯珠  
使用寿命: 50000 小时  
控制信号: DMX512, 主从机, 声控或者自走程序  
通道: 18 个国际 DMX 通道  
光束角度: 6°  
频闪: 0-25 次 / 秒, RGBW 无极混色系统  
工作温度: -25°C - 40°C  
防水等级: IP 20(室内使用)  
特殊功能:  
1. 透镜盘可 360° 无极旋转  
2. 内置 51 种静态效果, 51 种动态效果 多种内置程式  
3. 特殊透镜盘设计, 多种梦幻般效果

Input voltage: AC100-240V, 50-60Hz  
Power consumption: 260W  
Light source: 19 12W highlights 4 in 1 lamp beads  
Service life: 50000 hours  
Control signal: DMX512, master-slave, voice-activated or self-propelled program  
Channels: 18 International DMX Channels  
Beam angle: 6°  
Strobe: 0-25 times / second, RGBW electrodeless color mixing system  
Operating temperature: -25° C - 40° C  
Waterproof rating: IP 20 (indoor use)  
special function:  
1. The lens plate can be rotated 360 degrees.  
2. Built-in 51 static effects, 51 dynamic effects Built-in programs  
3 special lens disc design, a variety of fantastic effects

### JS-LB007



### 36 颗 LED 4/5/6 合 1 调焦染色摇头灯

36Pcs LED 4/5/6 and 1 focus on the lamp

技术参数 /Technical Parameters

电压: AC100-240V/50-60Hz  
功率: 400W  
灯珠: 36pcs x 10W  
通道: 12/16 通道  
调光: 0-100%, 线性电子  
变焦: 10-60°  
X 轴: 水平旋转最大角度 630 度 16bit  
Y 轴: 垂直旋转最大角度 240 度 16bit  
微调: 水平、垂直旋转 1.8 度  
显示: 是采用 LCD 显示和操作  
控制模式: DMX-512, 主 / 从机控制, 声控  
净重: 10kg  
包装尺寸: 420 x 330 x 640mm 1 台 / 纸箱

Voltage: AC100-240V / 50-60Hz  
Power: 400W  
Lamp beads: 36pcs x 10W  
Channel: 12/16 channel  
Dimming: 0-100% linear electron  
Zoom: 10-60°  
X axis: The maximum angle of 630 degrees horizontal rotation 16bit  
Y-axis: the maximum angle of 240 degrees vertical rotation 16bit  
Fine: horizontal, vertical rotating 1.8 degrees  
Display: LCD display and operation is the use of  
Control mode: DMX-512, master / slave control, voice control  
Weight: 10kg  
Packing size: 420 x 330 x 640mm 1 station / carton

### JS-LB008



### 108 颗 3W 染色摇头灯

108Pcs\*3W staining headlights

技术参数 /Technical Parameters

电压: AC90V-260V, 50/60Hz  
功率: 140W/350W  
LED 数量: 108pcs 1W/3W LED  
DMX 通道: 9ch, 11ch, 15ch 三种控制通道模式  
控制模式: DMX512 信号控制 / 主从 / 声控  
水平扫描: 540° (16bit 精度扫描)  
垂直扫描: 270° (16bit 精度扫描)  
外壳材料: 铝合金 + 塑料  
投射距离: 50M  
净重: 9kg

Voltage: AC90V-260V, 50 / 60Hz  
Power: 140W / 350W  
LED Quantity: 108pcs 1W / 3W LED  
DMX channel: 9ch, 11ch, 15ch three control channel mode  
Control Mode: DMX512 signal control / master-slave / Voice  
Horizontal scan: 540° (16bit precision scanning)  
Vertical scan: 270° (16bit precision scanning)  
Case Material: Aluminum + plastic  
Projection distance: 50M  
Weight: 9kg

### JS-LB009



### LED 九头鸟光束灯

LED nine-headed bird beam lamp

技术参数 /Technical Parameters

电压: AC100-240V 50/60Hz  
功率: 160W  
控制模式: DMX512, 主从, 声控, 自动模式  
光源: 9 颗 10W 红绿蓝白 4 合一高亮度 LED  
效果: 1670 万种颜色变化 10-60 度 非常小, 速度快, 功能大, X 轴无极转动  
控制通道: 13/46, DMX 通道 (数码显示)  
包装尺寸: 460\*430\*210mm  
重量: 13kg

Voltage: AC100-240V 50/60Hz  
Power: 160W  
Control modes: DMX512, master-slave, voice control, automatic mode  
Light source: 9\*10w with red, green, blue and white 4 in 1 high brightness LED lamp beads  
Effects: 16.7 million kinds of color changes. very small, fast speed, function is big, the infinite X axis rotation  
The control channel: 13/46, DMX channels (digital display)  
Packing size: 460 \* 430 \* 210 mm  
Weight: 13 KG

### JS-LB010



### LED 横排 8 眼摇头光束蜘蛛灯

LED horizontal row 8 eyes shake the beam spider light

技术参数 /Technical Parameters

输入电压: AC90-240V 50/60Hz  
消耗功率: 150W  
灯珠规格: 双排 8 头 10W 大功率 白光 / 彩光 RGBW LED 光源。  
平均 50,000 小时超长寿命, 低耗能, 节能环保 LED (8/21 个国际 DMX 通道)  
XY 轴角度: X 540 度, Y1: 120 度, Y2: 120 度  
光束角度: 3 度  
XY 速度: 高中低三种速度可调  
其他功能: 多种内置程序, 超炫声控效果, 专门为夜场定制  
外壳: 工程塑胶 + 铝合金  
重量: 11kg

Input voltage: AC90-240V 50 / 60Hz  
Power consumption: 150W  
Lamp beads specifications: double eight 10W high power white / IPL RGBW LED light source. Average 50,000 hours long life, low energy consumption, energy saving LED (8/21 international standard DMX channels)  
XY axis angle: X 540 degrees, Y1: 120 degrees, Y2: 120 degrees  
Beam angle: 3 degrees  
XY Speed: low high school three speed adjustable  
Other features: a variety of built-in programs, stunning voice effects, customized specifically for night games  
Shell: Engineering plastic + aluminum.  
Weight: 11kg

**JS-LB011**



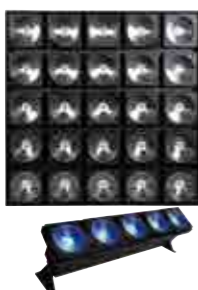
**36 颗 3WLED 摇头光束灯**  
36Pcs \*3W LED Moving Head beam lamp

技术参数 / Technical Parameters

输入电压: AC90-240V/50-60Hz  
功耗: 140W  
光源: 36 颗大功率 3W CREE XP-E 灯珠, 红: 8 绿: 10 蓝: 10  
白: 8  
LED 使用寿命: 大于 50,000 小时  
混色: 红色 0-255, 绿色 0-255, 蓝色 0-255, 白色 0-255, RGB/HSV  
效果: 频闪, 渐变, 渐亮, 渐暗, 换色, 快进慢出, 慢进快出  
光束角度: 8 度  
DMX 控制通道: 11CH/15CH  
旋转角度: 水平 630 度, 垂直 240 度, 电子自动纠错  
控制模式: DMX-512, 主 / 从机控制, 声控  
净重: 5kg

Input voltage: AC90-240V / 50-60Hz  
Power: 140W  
Light source: 36 high power 3W CREE XP-E lamp beads, Red: 8 Green: 10 Blue: 10 White: 8  
LED life: more than 50,000 hours  
Mixed color: Red 0-255, 0-255 green, blue 0-255, White 0-255, RGB / HSV  
Effect: Strobe, gradually flash, fade, change color, fast-forward and slow-out, a jog faster  
Beam angle: 8 degrees  
DMX control channel: 11CH / 15CH  
Rotation angle: 630 degrees horizontal and vertical 240 degrees, electronic automatic correction  
Control mode: DMX-512, master / slave control, voice control  
Weight: 5kg

**JS-LB012**



**5 眼 / 25 眼 30W 三合一点控矩阵灯**

5 eyes / 25 eyes 30W 3-1 point control matrix lamp

技术参数 / Technical Parameters

输入电压: AC100-240V, 50/60Hz  
额定功率: 500W  
光源: 25 颗 4-in-1 LED  
效果: 柔光效果或者光束效果任选  
光源寿命: 100,000 小时  
颜色范围: 1670 万种颜色 0-100% 饱和度可调  
通道模式: 8CH/80CH DMX 模式  
防护等级: IP20  
控制模式: DMX512 模式、主从机模式、自走模式、声控模式

Input voltage: AC100-240V, 50 / 60Hz  
Rated power: 800W  
Source: 25 4-in-1 LED  
Effect: soft effect or beam effect optional  
Source life: 100,000 hours  
Beam angle: 2 degrees  
Color range: 16.7 million colors 0 to 100% saturation adjustable  
Channel mode: 8CH / 80CH 3 种 DMX mode  
Protection: IP20  
Control mode: DMX512 mode, master and slave mode, self-propelled mode, voice mode

**JS-LB013**



**36 眼黄金矩阵灯**

36 eye gold matrix light

技术参数 / Technical Parameters

额定电压: 50 ac100-250v, 50/60Hz  
额定功率: 120W  
光源: 36 颗 3W 暖白 LED, 50000 小时额定  
光束角度: 4  
DMX 512 渠道: 1 / 4 / 10 / 36 / 40 通道可选  
色温: 2800-3000k 输出 调光: 0-100% 线性调光,  
16 位调光, 调光时仍保持平滑的变化在低 DMX 值范围;  
刷新频率: 12000hz, 不眨眼时拍摄;  
快门: 独立的电子选通;  
控制模式: 标准 DMX512;  
主 / 从模式, 无需手动设置主和从机, 将自动接收主机的主机数据;

Rated voltage: 50 ac100-250v, 50/60Hz  
Rated power: 120W  
Light source: 36 3W warm white LEDs, 50000 hours rated  
Beam angle: 4  
DMX 512 channels: 1 / 4 / 10 / 36 / 40 channels optional  
Color temperature: 2800-3000k output  
Dimming: 0-100% linear dimming,  
16-bit dimming, still maintaining a steady change in the low DMX range when dimming;  
Refresh rate: 12000hz, shooting without blinking;  
Shutter: Independent electronic gating;  
Control mode: Standard DMX512;  
Master/slave mode, no need to manually set the master and slave, will automatically receive the host's host data;

**JS-LB014**



**LED 7/14 眼 3W/5W/10W 点阵光束灯**

LED 7/14 eyes 3W/5W/10W Lattice beam light

技术参数 / Technical Parameters

输入电压: AC100V-240V 50/60Hz  
功率: 450W  
LED 灯珠: 14 颗 \*30W 3 合 1 RGB  
透镜角度: 25°  
控制模式: 自走 / 主从 / DMX512  
通道: 2/3/5/8/42/44CH  
IP 等级: IP65  
单台装: 108\*17\*23cm  
净重: 7.5kg  
毛重: 8.5kg

Input Power: AC100V-240V 50/60Hz  
Power Consumption: 450W  
LEDs: 14pcs 30W RGB 3in1 LEDs  
Lens Angle: 25°  
Control Mode: DMX 512 / master-slave / auto  
Channels: 2/3/5/8/42/44 Chs  
IP Rate: IP 65  
Carton Size: 108\*17\*23cm  
Net Weight: 7.5kg  
Gross Weight: 8.5kg

**JS-LB015**



**led 升降球**

Led Kinetic Lights

技术参数 / Technical Parameters

电源: AC90-240V 50/60Hz  
功率: 120W  
控制通道: 6/10CH  
彩球直径: 10/12/15/20/25/30/35/40cm  
升降高度: 0-1.5m/0-3m/0-6m/0-9m/0-12m  
控制模式: DMX512, 主 / 从, 自走, 声控  
毛重: 12KG

Power supply: AC90-240V 50/60Hz  
Power: 120W  
Channel: 6/10CH  
Led ball diameter: 10/12/15/20/25/30/35/40cm  
Lift Height: 0-1.5m/0-3m/0-6m/0-9m/0-12m  
Control mode: DMX512, master / slave, auto, sound  
Gross Weight: 12kg

**JS-P001**



**54 颗 铸铝防水帕灯 单色 / 全彩**

54 Cast aluminum waterproof Par Monochromatic/full color

技术参数 / Technical Parameters

额定电压: AC100-240V, 50/60Hz  
额定功率: 162/200W  
光源: 54pcs x 1/3W RGBW  
操作模式: 声控, 自动, 主从, DMX512  
通道: 8 种标准 DMX 通道  
防水等级: IP65  
产品尺寸: 260 x 255 x 255mm/  
产品重量: 9.9kg

Rated voltage: AC100-240V, 50 / 60Hz  
Rated power: 162 / 200W  
Source: 54pcs x 1 / 3W RGBW  
Operating modes: voice-activated, automatic, master-slave, DMX512  
Channel: 8 standard DMX channel  
Waterproof grade: IP65  
Product size: 260 x 255 x 255mm /  
Product Weight: 9.9kg



**JS-P002**



**54 颗铸铝帕灯单色 / 全彩**

54 aluminum Par Monochromatic/full color

技术参数 / Technical Parameters

电压: AC90-240V, 50/60Hz  
额定功率: 200W  
LED: 3W\*54Pcs  
使用寿命: 60,000-100,000 小时  
光束角度: 10° ~45°  
控制模式: DMX 512/ 主从 / 自走  
通道数: 7  
净重: 3.5kg  
毛重: 4kg  
内包装尺寸: 255 x 255 x 390mm  
备注: 灯珠可选 RGB 3 合 1 3W LED

Voltage: AC90-240V, 50/60Hz  
Rated power: 200W  
LED: 3W\*54Pcs  
Lifespan: 60,000 to 100,000 hours  
Beam angle: 10° ~ 45°  
Control mode: DMX 512 / master-slave / self-propelled  
Channels: 7  
Net weight: 3.5kg  
Gross Weight: 4kg  
Inner packing size: 255\*255\*390mm  
Note: LED can be RGB 3 in 1 3W LED



**JS-P003**



**18 颗 LED 全彩帕灯 -4/5/6 合 1**

18PCS LED Full-color Par Light-4in1/5in1/6in1

技术参数 / Technical Parameters

电压: AC90V-220V, 50/60 Hz  
功率: 200W  
光源: 54 颗 x3W 高亮度 LED(R12,G18,B18,W6)  
54 颗 X3W LED (RGB 3 合 1)  
发光角度: 25°  
控制: DMX512、主从控制、自走、声控  
通道: 7 通道 (数码显示)

Input voltage: AC90V-220V, 50/60 Hz  
Power: 200W  
Light source: 54 x3W LED (R12, G18, B18, W6)  
54 x3W LED (RGB 3in1)  
Beam angle: 25°  
Control: DMX512, master-slave, auto, sound  
Channel: 7 channel



**JS-P004**



**24 颗 LED 全彩帕灯 -4/5 合 1**

24PCS LED Par Light-4/5in1

技术参数 / Technical Parameters

输入电压: AC90V-220V, 50-60Hz  
功率: 250W  
光源: 24 颗 10W RGBW 4in1 LED  
24 颗 15W RGBWA 5in1 LED  
光束角度: 25°  
运行模式: 自走、声控、主从、DMX512  
通道: 8/9 CH

Input voltage: AC90V-220V, 50-60Hz  
Power: 250W  
Light source: 24 pcsx10W / 15W (4in1,5in1)  
Beam angle: 25°  
Operating mode: auto, sound, master-slave, DMX512  
Channels: 8/9 CH



**JS-P005**



**18 颗 LED 调焦帕灯**  
18PCS LED Zoom Par Light

技术参数 / Technical Parameters

电压: A C 90-220V, 50-60Hz  
功率: 200W  
光源: 18 颗 \*10W 红绿蓝白 4 合 1, 或者 5 合 1  
控制模式: DMX512, 声控, 自走, 主从  
通道: 5/6/7/8/13CH  
防水等级: IP20

Voltage: AC 90-220V, 50-60Hz  
Power: 200W  
Light source: 18 \* 10W RGBW 4 in 1 / 5 in 1  
Control mode: DMX512, voice, self-propelled, master-slave  
Channels: 5/6/7/8 / 13CH  
Waterproof rating: IP20



**JS-P006**



**18 颗防水调焦帕灯**  
18pcs 4/5/6in1 LED Zoom Waterproof PAR Light

技术参数 / Technical Parameters

电压: AC90-220V, 50/60Hz  
功率: 220W  
光源: 18 颗 \*10W (4/5/6 合 1 LED)  
运行模式: DMX512, 声控, 自走, 主从  
通道: 8/9/10CH  
IP 等级: IP65

Voltage: AC90-220V, 50 / 60Hz  
Power: 220W  
Light source: 18x10W (4/5/6 in 1 LED)  
Operating mode: DMX512, sound, auto, master-slave  
Channels: 8/9/10CH  
IP rating: IP65



**JS-P007**

54 颗三合一不防水帕灯  
54 Triple not waterproof par light



技术参数 / Technical Parameters

电压: AC90-240V, 50/60Hz  
额定功率: 200W  
LED: 3W\*54Pcs  
使用寿命: 60,000-100,000 小时  
光束角度: 10° -45°  
控制模式: DMX 512 / 主从 / 自走  
通道数: 7  
净重: 3.5kg  
内包装尺寸: 255 × 255 × 390mm

Voltage: AC90-240V, 50/60Hz  
Rated power: 200W  
LED: 3W\*54Pcs  
Lifespan: 60,000 to 100,000 hours  
Beam angle: 10° - 45°  
Control mode: DMX 512 / master-slave / self-propelled  
Channels: 7  
Net weight: 3.5kg  
Inner packing size: 255\*255\*390mm

**JS-P009**

18/12/7 颗 LED 扁平帕灯  
18/12/7Pcs Slim led par light



技术参数 / Technical Parameters

电源: AC110-250V 50/60Hz  
光源: 18 颗 高亮度灯珠  
颜色: 1670 万种颜色的变化  
控制通道: 4/8 CH (4 合 1) 5/9CH (5 合 1) 6/10CH(6 合 1)  
控制模式: DMX512, 主 / 从, 自走, 声控  
毛重: 6KG

Power supply: AC110-250V 50/60Hz  
Source: 18pcs 4in1/5in1/6in1 high power led  
Control channel: 4/8 CH (4in1) 5/9CH (5in1) 6/10CH(6in1)  
Control mode: DMX512, master / slave, auto, sound  
Gross Weight: 6kg

**JS-P011**

54 颗不防水扁帕灯 (单色 / 全彩)  
54 non-waterproof flat light (monochrome/full color)



技术参数 / Technical Parameters

输入电压: AC90-240V/50-60Hz  
功率: 220W  
光源: 54 颗 3W 三合一添鑫灯珠  
光源寿命: 6-10 万小时  
颜色: 1670 万种颜色变化  
控制: DMX512、主从控制、自走  
通道: 7 通道 (数码显示)  
尺寸: 290 × 290 × 340MM  
净重: 6kg

Input voltage: AC90-240V/50-60Hz  
Power: 220W  
Light source: 54 3W three-in-one Xin lamp beads  
Light source life: 6-10 million hours  
Color: 16.7 million color changes  
Control: DMX512, master-slave control, self-propelled  
Channel: 7 channels (digital display)  
Size: 290 × 290 × 340MM  
Net weight: 6kg

**JS-P013**

108 颗 / 120 颗不防水帕灯  
108/120 is not waterproof Par



技术参数 / Technical Parameters

输入电压: AC90-250V 47/63Hz  
光源: 超亮度 LED, 108 颗 × 1W (3W) (红: 28 绿: 36 蓝: 36 白: 18)  
光束角度: 15° 25° 30° 45°  
协议: USITT DMX-512  
控制通道: 6CH  
控制模式: DMX, 自动触发  
模式: 主从机, 单机自走, 声控  
数据输入 / 输出: 3 针卡侬座  
最大功率: 150W/450W  
实际尺寸: 300 × 300 × 380mm

Input voltage: AC90-250V 47 / 63Hz  
Source: ultra-bright LED, 108 pcs × 1W (3W) (Red: 28 Green: 36 Blue: 36 White: 18)  
Beam angle: 15° 25° 30° 45°  
Protocol: USITT DMX-512  
Control Channel: 6CH  
Control mode: DMX, automatic trigger  
Mode: Master Slave, Stand alone, Sound  
Data input / output: 3-pin XLR  
Maximum power: 150W / 450W  
Actual size: 300 × 300 × 380mm

**JS-P008**

19 颗高亮欧司朗四合一调焦帕灯  
19 highlights OSRAM 4-in-1 focus par light



技术参数 / Technical Parameters

额定电压: AC100V-240V, 50/60Hz  
额定功率: 360W  
灯珠数量: 19 颗 4 合一 LED  
控制模式: 自走、主从、DMX  
防水等级: IP20  
混色: R、G、B、W 混出多种绚丽色彩  
频闪: 可调节频闪速度特点: 亮

Rated voltage: AC100V-240V, 50/60Hz  
Rated power: 360W  
Lamp beads number: 19 4 in 1 LED  
Control mode: self-propelled, master-slave, DMX  
Waterproof rating: IP20  
Mixing: R, G, B, W mix a variety of brilliant colors  
Strobe: Adjustable stroboscopic speed: bright

**JS-P010**

72 颗 LED 铸铝帕灯  
72PCS LED Aluminum Par Light



技术参数 / Technical Parameters

电源: AC90-220V, 50/60Hz  
功率: 260W  
光源: 72 颗 3W LED  
颜色: RGBW 4 色, 或者 RGB 3 合 1  
控制模式: DMX512, 自走, 声控, 主从模式  
DMX 模式: 8 DMX 通道

Power supply: AC90-220V, 50 / 60Hz  
power: 260W  
Light source: 72PCS\*3W LED  
Color: RGBW 4color or RGB 3in1  
Control mode: DMX512, auto, sound, master-slave  
DMX mode: 8 DMX channel

**JS-P012**

18 颗四合一防水扁帕灯  
18 four-in-one waterproof flat par light



技术参数 / Technical Parameters

输出电压: AC90-245V/50-60 Hz  
功率: 200W  
光源: 18 颗 4 合一高亮度 LED 光源  
寿命: 6-10 万小时  
颜色: 1670 万种颜色变化  
LED 角度: 15°, 25°, 45° (可供选择)  
控制: DMX512, 主从控制, 自走通道: 8 通道 (数码显示)

Output voltage: AC90-245V/50-60 Hz  
Power: 200W  
Light source: 18 4-in-1 high-brightness LED light source  
Life: 6-10 million hours  
Color: 16.7 million color changes  
LED angle: 15° C, 25° C, 45° C (optional)  
Control: DMX512, master-slave control, self-walking channel: 8 channels (digital display)

**JS-P014**

120 颗 防水帕灯  
120 Waterproof Par



技术参数 / Technical Parameters

电压: AC110-240V 50/60Hz  
功率: 200W/400W  
LED 灯珠: R28+G30+B30+W32  
发光角度: 15度, 25度, 60度可选  
8 个标准 DMX512 通道  
功能模式: DMX512 信号控制模式, 主从机模式, 自动演示模式和声控模式  
包装尺寸: 310 × 310 × 425mm  
重量: 10kg

Voltage: AC110-240V 50 / 60Hz  
Power: 200W / 400W  
LED lamp beads: R28 + G30 + B30 + W32  
Viewing angle: 15 degrees, 25 degrees, 60 degrees optional  
8 standard DMX512 channels  
Function Mode: DMX512 signal control mode, master-slave mode, demo mode and automatic voice-activated mode  
Packing size: 310 × 310 × 425mm  
Weight: 10kg

Power supply: AC110-250V 50/60Hz  
Source: 4pcs /6PCS 4in1/5in1/6in1 high power led  
Control channel: 4/8 CH (4in1) 5/9CH (5in1) 6/10CH(6in1)  
Control mode: DMX512, master / slave, auto, sound  
Gross Weight: 3kg

**JS-P015**

LED 无线电池帕灯  
Wireless & Battery led par light



技术参数 / Technical Parameters

电源: AC110-250V 50/60Hz  
光源: 12 颗 高亮度灯珠  
颜色: 1670 万种颜色的变化  
控制通道: 4/8 CH (4 合 1) 5/9CH (5 合 1) 6/10CH(6 合 1)  
控制模式: DMX512, 主 / 从, 自走, 声控  
毛重: 6KG

Power supply: AC110-250V 50/60Hz  
Source: 12pcs 4in1/5in1/6in1 high power led  
Color: 16700000 color changes  
Control channel: 4/8 CH (4 in 1) 5/9CH (5 in 1) 6/10CH(6 in 1)  
Control mode: DMX512, master / slave, auto, sound  
Gross Weight: 6kg

**JS-P017**

9 颗 LED 圆帕  
9PCS LED ROUND PAR LIGHT



技术参数 / Technical Parameters

电压: AC90-220V, 50/60Hz  
功率: 100W  
LED 光源: 9 颗 × 10W RGBW 4 合 1  
控制方式: DMX512, 主从控制、自走、声控  
DMX 通道: 8 通道  
光源寿命: 6-10 万小时

Voltage: AC90-220V, 50/60Hz  
Power: 100W  
LED light source: 9 × 10W RGBW 4 in 1  
Control mode: DMX512, master-slave control, self-propelled, voice-activated mode  
DMX channel: 8 channels  
Light source life: 6-10 million hours

**JS-P019**

7 颗全彩扁帕灯  
7PCS Full-color Par Light



技术参数 / Technical Parameters

电压: AC90-220V, 50/60Hz  
功率: 30W  
光源: 7颗\*3W RGB 3合1  
7\*10W RGBW 4合1  
7\*12W RGBWA 5合1  
运行模式: DMX512, 声控, 自走, 主从  
通道: 7CH

Voltage: AC90-220V, 50 / 60Hz  
Power: 30W  
Source: 7 \* 3W RGB 3in1  
7\*10W RGBW 4in1  
7\*12W RGBWA 5in1  
Control mode: DMX512, voice-activated, self-propelled, master-slave  
Channel: 7CH

**JS-P021**

4 颗 / 6 颗无线电池帕灯  
Wireless & Battery led par light



技术参数 / Technical Parameters

电源: AC110-250V 50/60Hz  
光源: 4 颗 / 6 颗高亮度灯珠  
颜色: 1670 万种颜色的变化  
控制通道: 4/8 CH (4 合 1) 5/9CH (5 合 1) 6/10CH(6 合 1)  
控制模式: DMX512, 主 / 从, 自走, 声控  
毛重: 3KG

Power supply: AC110-250V 50/60Hz  
Source: 4pcs /6PCS 4in1/5in1/6in1 high power led  
Control channel: 4/8 CH (4in1) 5/9CH (5in1) 6/10CH(6in1)  
Control mode: DMX512, master / slave, auto, sound  
Gross Weight: 3kg

**JS-P016**

9+1 帕灯  
9 + 1 Par



技术参数 / Technical Parameters

电压: AC110-220V, 50-60Hz  
功率: 120W  
光源: 10W\*9 颗; 30W\*1 颗  
通道: 6CH  
控制模式: DMX512, 声控, 自走, 主从

技术参数 / Technical Parameters

Voltage: AC110-220V, 50-60Hz  
Power: 120W  
Source: 10W \* 9 Pcs; 30W \* 1 Pcs  
Channel: 6CH  
Control mode: DMX512, voice-activated, self-propelled, master-slave

**JS-P018**

18 颗 LED 扁帕灯  
18PCS LED Flat Par Light



技术参数 / Technical Parameters

电压: AC90-220V, 50/60Hz  
功率: 30W  
光源: 18颗\*1W LED 灯珠  
运行模式: DMX512, 声控, 自走, 主从  
通道: 7CH

Voltage: AC90-220V, 50 / 60Hz  
Power: 30W  
Source: 18 \* 1W LED  
Control mode: DMX512, sound, auto, master-slave  
Channel: 7CH

**JS-P020**

3 颗无线电池帕灯  
Wireless & Battery led par light



技术参数 / Technical Parameters

电源: AC110-250V 50/60Hz  
光源: 3 颗 高亮度灯珠  
颜色: 1670 万种颜色的变化  
控制通道: 4/8 CH (4 合 1) 5/9CH (5 合 1) 6/10CH(6 合 1)  
控制模式: DMX512, 主 / 从, 自走, 声控  
毛重: 3KG

Power supply: AC110-250V 50/60Hz  
Source: 3pcs 4in1/5in1/6in1 high power led  
Control channel: 4/8 CH (4in1) 5/9CH (5in1) 6/10CH(6in1)  
Control mode: DMX512, master / slave, auto, sound  
Gross Weight: 3kg

**JS-P022**

12 颗 / 9 颗四合一五合一帕灯  
12/9 four-in-one five-in-one par lights



技术参数 / Technical Parameters

电源: AC110-250V 50/60Hz  
光源: 12 颗 高亮度灯珠  
颜色: 1670 万种颜色的变化  
控制通道: 4/8 CH (4 合 1) 5/9CH (5 合 1) 6/10CH(6 合 1)  
控制模式: DMX512, 主 / 从, 自走, 声控  
毛重: 6KG

Power supply: AC110-250V 50/60Hz  
Source: 12pcs 4in1/5in1/6in1 high power led  
Control channel: 4/8 CH (4in1) 5/9CH (5in1) 6/10CH(6in1)  
Control mode: DMX512, master / slave, auto, sound  
Gross Weight: 6kg

### JS-Z001



36 颗 /31 颗车展灯  
36/31 car show lights  
技术参数 / Technical Parameters  
输入电压: AC 90~260V 50/60Hz  
额定功率: 350W  
光源: 31 颗 10W LED 白光美国 CREE 科锐 灯珠  
调光: 0-100% 线性调节  
色温: 标准 6300K, (2800K-9000K 色温段可定制)  
控制模式: DMX 512, 主从, 声控或者自走  
实物规格: 29 x 29 x 52cm  
净重: 8KG

Input voltage: AC 90~260V 50 / 60Hz  
Rated power: 350W  
Light source: 31pcs 10W LED white light US CREE  
Dimming: 0-100% linear adjustment  
Color temperature: standard 6300K  
Control mode: DMX 512, master/slave, Sound/Auto  
Product size: 29 x 29 x 52cm  
Net weight: 8KG

COB 100W 防水面光灯  
COB 100W waterproof surface light



### JS-Z003

技术参数 / Technical Parameters  
电压: AC100-240V, 50/60Hz  
功率: 480W  
光源: 4 x 100W 暖白 / RGBW 灯珠  
使用寿命: >50,000 小时  
色温: 3200K-5600K 可选  
光束角度: 30° 通道: 9CHs  
频闪: 1-20 次 / 秒 调光: 0-100% 线性调光  
控制模式: DMX512 / 主从 / 声控 / 自走模式  
防护等级: IP65  
尺寸: 715\*440\*490mm 净重: 5KG

Voltage: AC100-240V, 50/60Hz  
Power: 480W  
Light Source: 4 x 100W warm white/RGBW lamp beads  
Service life: >50,000 hours  
Color temperature: 3200K-5600K optional  
Beam Angle: 30° Channel: 9CHs  
Strobe: 1-20 times / second Dimming: 0-100% linear dimming  
Control mode: DMX512 / master / slave / self-propelled mode  
Protection class: IP65  
Size: 715\*440\*490mm Net weight: 5KG

COB 200W 面光灯(暖色 / 正白 / 双色)

COB 200W surface light (warm/positive white/bicolor)



技术参数 / Technical Parameters  
电压: AC90V-220V, 50/60Hz  
功率: 140W/240W  
LED 光源: 200W COB 灯珠  
控制: DMX512, 主从控制、自走  
通道: 3/4/8 通道 (数码显示)  
颜色: 白光 / 暖白 / 正白 + 暖白 / RGB 3 合 1 / RGBW 4 合 1  
寿命: 50000 小时  
色温: 3200K-6500K 可选

Voltage: AC90V-220V, 50 / 60Hz  
Power: 140W / 240W  
LED light source: 200W COB lamp beads  
Control: DMX512, master-slave, auto Channel: 3/4/8 channel (digital display)  
Color: white / warm white / white + warm white / RGB 3 in 1 / RGBW 4 in 1  
Life: 50,000 hours  
Color temperature: 3200K-6500K optional

4 眼 / 2 眼观众灯 (可拼接)  
4 Eyes/2 Eyes Audience Lights (Splicing)



### JS-Z007

技术参数 / Technical Parameters  
电压: AC100V-240V, 50/60Hz  
功率: 450W  
光源: 4\*100W 暖白 / RGBW 灯珠  
使用寿命: >50,000 小时  
色温: 2800-3200K 可选  
光通量: 8624lm 光照度: 960lux (5m)  
光束角度: 45° 发射角度: 90°  
通道: 1/2/4/8CHs 频闪: 1-20 次 / 秒  
调光: 0-100% 线性调光  
控制模式: DMX512 / 主从 / 声控 / 自走模式  
尺寸: 360\*450\*150mm 毛重: 10.5KG

Voltage: AC100V-240V, 50/60Hz  
Power: 450W  
Light source: 4\*100W warm white/RGBW lamp beads  
Service life: >50,000 hours  
Color temperature: 2800-3200K optional  
Luminous flux: 8624lm Illuminance: 960lux (5m)  
Beam angle: 45° Light emission angle: 90°  
Channel: 1/2/4/8CHs Strobe: 1-20 times / second  
Dimming: 0-100% linear dimming  
Control mode: DMX 512 / master / slave / self-propelled mode  
Size: 360\*450\*150mm Gross weight: 10.5KG

100W/200W COB 面光灯暖白 / 正白 / 双色 (可带挡光叶 / 不带挡光叶)

100W/200W COB surface warm white/upright/bicolor (with/without light block)



### JS-Z002

技术参数 / Technical Parameters  
电压: AC90V-220V, 50/60Hz  
功率: 140W/240W  
LED 光源: 100W/200W COB 灯珠  
控制: DMX512, 主从控制、自走  
通道: 3/4/8 通道 (数码显示)  
颜色: 白光 / 暖白 / 正白 + 暖白 / RGB 3 合 1 / RGBW 4 合 1  
寿命: 50000 小时  
色温: 3200K-6500K 可选

Voltage: AC90V-220V, 50 / 60Hz  
Power: 140W / 240W  
LED light source: 100W / 200W COB lamp beads  
Control: DMX512, master-slave, auto Channel: 3/4/8 channel (digital display)  
Color: white / warm white / white + warm white / RGB 3 in 1 / RGBW 4 in 1  
Life: 50,000 hours  
Color temperature: 3200K-6500K optional

18/14 颗防水面光灯 (4 合 1/5 合 1)  
18/14 waterproof surface light (4 in 1/5 in 1)



### JS-Z004

技术参数 / Technical Parameters  
输入电压: AC90-250V 50/60Hz  
最大功率: 200W  
灯珠规格: 18 颗 \*10W 4 合 1 LED  
恒流驱动: 600mA  
PWM 调光频率: >400Hz 16666 级  
运行模式: 自走、声控、主从、DMX512  
DMX512 通道数: 8CH  
颜色效果: R, G, B, A, W 混色

Input voltage: AC90-250V 50/60Hz  
Maximum power: 200W  
Source: 18pcs\*10w 4in1 LED RGBW  
Constant current drive: 600mA  
PWM dimming frequency: >400Hz 16666 grade  
Operating modes: Auto, sound, master-slave, DMX512  
DMX512 Channels: 8CH  
Color effects: R, G, B, A, W color mixing  
Functional effects: dimming, strobe, water, gradient

COB 200W 防水面光灯  
COB 100W waterproof surface light



### JS-Z006

技术参数 / Technical Parameters  
电压: AC100-240V, 50/60Hz  
功率: 200W  
光源: 1\*200W 暖白 / RGBW 灯珠  
使用寿命: >50,000 小时  
色温: 3200K-5600K 可选  
光束角度: 15/30°  
控制模式: DMX512 / 主从 / 声控 / 自走模式  
防护等级: IP65  
尺寸: 260\*180\*238mm 净重: 4.3KG

Voltage: AC100-240V, 50/60Hz  
Power: 200W  
Light source: 1\*200W warm white/RGBW lamp beads  
Service life: >50,000 hours  
Color temperature: 3200K-5600K optional  
Beam angle: 15/30°  
Control mode: DMX512 / master / slave / self-propelled mode  
Protection class: IP65  
Size: 260\*180\*238mm Net weight: 4.3KG

### JS-Z008

4 眼观众灯  
4 eye viewer lights



技术参数 / Technical Parameters  
灯珠: 4 PCS 100W LED  
寿命: 约 50,000 小时  
颜色: 暖白 3000 ± 200K / 可选  
亮度输出  
光通量: 8624lm  
色温: 3200K  
照度: 960lux (5m)  
最佳投射距离: 15-30m  
光学及特性  
调光: 线性调光 0-100%  
频闪: 0-25 次 / 秒

Lamp Beads: 4 PCS 100W LED  
Life: about 50,000 hours  
Color: warm white 3000 ± 200K/optional  
Brightness output  
Luminous flux :8624lm  
Color temperature: 3200K  
Illuminance: 960lux (5m)  
Best throw distance: 15-30m  
Optical and characteristics  
Dimming: linear dimming 0-100%  
Strobe: 0-25 times / second

### JS-Z009

4 眼 / 2 眼防水观众灯  
4 eyes / 2 waterproof viewer lights



技术参数 / Technical Parameters  
电压: AC100V-240V, 50/60Hz  
功率: 500W  
光源: 4\*100W 暖白 / RGBW 灯珠  
使用寿命: >50,000 小时  
色温: 3200K-5600K 可选  
光束角度: 65° / 15° 透镜可选  
通道: 8CHs 频闪: 1-20 次 / 秒  
调光: 0-100% 线性调光  
控制模式: DMX512 / 主从 / 声控 / 自走模式  
防护等级: IP65  
尺寸: 420\*480\*250mm 毛重: 19KG

Voltage: AC100V-240V, 50/60Hz  
Power: 500W  
Light source: 4\*100W warm white/RGBW lamp beads  
Service life: >50,000 hours  
Color temperature: 3200K-5600K optional  
Beam angle: 65° / 15° lens optional  
Channel: 8CHs  
Strobe: 1-20 times / second  
Dimming: 0-100% linear dimming  
Control mode: DMX512 / master / slave / self-propelled mode  
Protection class: IP65  
Size: 420\*480\*250mm Gross weight: 19KG

### JS-Z011

750W/575W 多功能帕灯 / 车展灯  
750W/575W multi-function par light/car show light



技术参数 / Technical Parameters  
压铸优质铝外壳, 配 4 块不同角度镜片, 360° 可  
调镜片旋转架。功率低、节能、优质铝反光杯。  
电压: 220V/50Hz 色温: 3200K  
光源: HPL750W/575W G9.5 尺寸: 32 x 24 x 22cm  
重量: 3.5kg 尺寸: 32 x 24 x 22cm  
特点: 该灯聚光性强, 适用于人物、背景、道具、照明

External die-casting high-quality aluminum housing, with 4 different angle lenses, 360° adjustable lens rotating frame. Low power, energy saving, high quality aluminum reflector.  
Voltage: 220V/50Hz Color temperature: 3200K  
Light source: HPL750W/575W G9.5 Color temperature 3200K Weight : 3.5kg  
Size : 32 x 24 x 22cm  
Features: The lamp is highly light-absorbing, suitable for people, scenery, props, lighting

### JS-Z013

LED 200W 调焦成像灯  
LED 200W focusing imaging light



技术参数 / Technical Parameters  
输入电压: AC100-240V 50/60Hz  
开关电源: 最大输出功率 300W, DC30V+12V  
输出功率: 200W  
光源: 200W COB (日本 CITIZEN)  
光源寿命: > 50000h  
显色指数: Ra ≥ 90 (WW), Ra ≥ 85 (CW)  
工作温度: -20~+45℃ 调焦范围: 10° -36°  
调光方式: 线性调光 0-100%  
防护等级: IP20

Input voltage: AC100-240V 50/60Hz  
Switching power supply: maximum output power 300W, DC30V+12V  
Output power: 200W  
Light Source: 200W COB (CITIZEN, Japan)  
Color rendering index: Ra ≥ 90(WW), Ra ≥ 85(CW)  
Operating temperature: -20~+45 °C Focusing range: 10°-36°  
Dimming method: linear dimming 0-100%  
Protection class: IP20

### JS-Z015

LED 平板柔光灯  
LED panel soft light



技术参数 / Technical Parameters  
额定电压: AC110V-230V 50Hz-60Hz  
额定功率: 128W, 光源: 0.5W 5730LED  
灯珠数量: 256 颗贴片式进口灯珠  
颜色: 暖白色  
通道数: 2 个 DMX512 通道 (调光, 频闪)  
色温: 3200K  
工作环境: 适合用在多媒体会议室, 礼堂  
外壳材料: 铁片 + 柔光板  
尺寸: 60\*20\*33cm  
重量: 2kg

Rated voltage: AC110V-230V 50Hz-60Hz  
Rated power: 128W, light source: 0.5W 5730LED  
Number of lamp beads: 256 SMD imported lamp beads  
Color: Warm white  
Number of channels: 2 DMX512 channels (dimming, strobe)  
Color temperature: 3200K  
Working environment: suitable for use in multimedia conference rooms, auditoriums  
Shell material: iron + soft plate  
Size: 60\*20\*33cm  
Weight: 2kg

### JS-Z017

1000W 筒灯  
1000W Down



技术参数 / Technical Parameters  
电压: 220V 50/60Hz  
灯泡: 220V 1KW  
灯座: G9.5  
色温: 3200K  
特点: 采用易散热的铝合金外壳, 延长灯具的使用寿命  
范围: 用于大型舞台灯以及歌剧院等场所  
重量: 3.5kg  
尺寸: 225 x 225 x 465mm

Voltage: 220V 50/60Hz  
Bulb: 220V 1KW  
Lamp holder: G9.5  
Color Temperature: 3200K  
Features: Easy cooling aluminum case, extend lamp life  
Range: for large stage lights and theaters and other places  
Weight: 3.5kg  
Size: 225\*225\*465mm

### JS-Z010

LED 200W 聚光灯  
LED 200W Spotlight



技术参数 / Technical Parameters  
输入电压: AC100V-240V, 50Hz/60Hz  
额定功率: 250W  
光源: 100/150W/200W COB  
灯珠寿命: ≥ 50000 小时  
色温: 3200K 或 5600K 可选  
调光: 0-100% 线性调光  
频闪: 多种频闪功能, 1-20 次 / 秒  
控制模式: DMX512 手动 / 主副机  
通道数: 2 个 DMX512 通道  
防护等级: IP20 重量: 9.4kg  
尺寸: 43\*28\*29 cm 10.5kg

Input voltage: AC100V-240V, 50Hz/60Hz  
Rated power: 250W  
Light source: 100/150W/200W COB  
Lamp beads life: ≥ 50000 hours  
Color temperature: 3200K or 5600K optional  
Dimming: 0-100% linear dimming  
Strobe: Various strobe functions, 1-20 times / second  
Control mode: DMX512 / manual / master and slave  
Channel type: 2 DMX512 channels  
Protection class: IP20 Weight: 9.4kg  
Size: 43\*28\*29 cm 10.5kg

### JS-Z012

750W 成像灯  
750W Imaging Light



技术参数 / Technical Parameters  
输入电压: AC220V  
额定功率: 750W/750W  
最高环境温度: <40°C  
最高表面温度: <170°C  
最小间隔距离: 0.4m  
最小照射距离: 1.5m  
色温: 3200  
尺寸: 560 x 340 x 430mm  
重量: 6kg

Input voltage: AC220V  
Rated power: 750W/750W  
Maximum ambient temperature: <40° C  
Maximum surface temperature: <170° C  
Minimum separation distance: 0.4m  
Minimum exposure distance: 1.5m  
Color temperature: 3200  
Size: 560 x 340 x 430mm  
Weight: 6kg

### JS-Z014

双色温三色色  
Two color temperature three primary colors



技术参数 / Technical Parameters  
额定电压: AC110V-240V 50Hz-60Hz  
额定功率: 200W  
光源: 0.5W 5730LED 光束角度: 120°  
色温: 3200K-6500K 可调  
通道数: 4 个国际 DMX512 通道  
显示方式: 3 位数码显示  
外壳材料: 铝材 + 导光板  
颜色: 黑色  
尺寸: 640\*330\*92mm 重量: 6.5Kg

Rated voltage: AC110V-240V 50Hz-60Hz  
Rated power: 200W  
Light source: 0.5W 5730LED  
Beam angle: 120°  
Color temperature: 3200K-6500K adjustable  
Number of channels: 4 international DMX512 channels  
Display mode: 3 digital display  
Shell material: aluminum + light guide plate  
Colour: Black  
Size: 640\*330\*92mm  
Weight: 6.5Kg

### JS-Z016

4 管 / 6 管 / 嵌入式三色色  
4 tubes/6 tubes/embedded trichromatic



技术参数 / Technical Parameters  
规格: 4 管 / 6 管  
照度: 2M 1200LUX 5M 300LUX  
灯泡: OSRAM 55W/36W 电压: 220V ± 10%  
功率: 4 管 55W × 4 = 220W, 6 管 55W × 6 = 330W  
色温: 3000K  
寿命: 10000 小时 重量: 4 管 9.8kg, 6 管 12.5kg

Specifications: 4 tubes/6 tubes  
Illuminance: 2M 1200LUX 5M 300LUX  
Light bulb: OSRAM 55W/36W Voltage: 220V ± 10%  
Power: 4 tubes 55W × 4 = 220W, 6 tubes 55W × 6 = 330W  
Color temperature: 3000K  
Lifetime: 10000 hours Weight: 4 tubes 9.8kg, 6 tubes 12.5kg

2000W 天地灯地排灯  
2000W Sky Lights



技术参数 / Technical Parameters  
电源: 220V/50Hz 40A  
光源: 220V/1000W 夹式灯管  
色温: >3000K  
适用范围: 舞台, 酒吧, 演艺厅, 迪吧, 演唱会, 婚庆, 舞台灯光工程公司及各大中小演艺租赁公司

Power supply: 220V/50Hz 40A  
Light source: 220V/1000W clip-on lamp  
Color temperature: >3000K  
Suitable range: stage, dance halls, bars, auditorium, disco, concerts, wedding, stage lighting engineering company



LED 36/54/72 颗单色 / 三合一柔光灯  
LED 36/54/72 Single Color/Triple Soft Light



**JS-X001**  
技术参数 / Technical Parameters  
电压: AC90-220V, 50-60Hz  
功耗: 250W  
光源: 36/54/72 颗 3W RGBW LED  
控制模式: 声控, 自走, 主从, DMX512  
通道: 7CH  
色彩效果: 单色投光 / 泛光 / 追逐, 流水

Voltage: AC90-220V, 50-60Hz  
Power consumption: 250W  
Light source: 36/54/72x3W RGBW LED  
Control mode: sound, auto, master-slave, DMX512  
Channels: 7CH  
Color effects: monochrome cast light / floodlight / chase, water

LED 72 颗 / 96 颗 / 108 颗 防水投光灯  
LED 72/96/108 waterproof flood light



**JS-X003**  
技术参数 / Technical Parameters  
输入电压: AC90-240V, 50/60HZ  
功率: 800W LED 光源: 10W  
光源数量: 72 颗 (RGBW 四合一)  
光源寿命: 6-10 万小时  
调光: 0-100% 频闪: 1-20 次 / 秒  
透镜角度: 15°、25°、35°、45° (可选)  
控制方式: 标准 DMX512 信号, 3 芯接口, 主从控制、自走模式  
产品尺寸: 670\*290\*640mm

Input voltage: AC90-240V, 50 / 60HZ  
Power: 800W  
LED light source: 10W  
Number of light sources: 72 (RGBW Quad)  
Source life: 6-10 ten thousand hours  
Dimming: 0-100%  
Strobe: 1-20 times / sec  
Lens angle: 15°, 25°, 35°, 45° (optional)  
Control: standard DMX512 signal, 3-pin interface, master-slave control, self-propelled mode  
Size: 670 \* 290 \* 640mm

18 颗五合一 / 14 颗四合一六合一  
点控洗墙灯  
18 five-in-one/14 four-in-one six-in-one Point control wall washer



**JS-X005**  
技术参数 / Technical Parameters  
电压: AC90-240V 50-60Hz  
LED: 18 颗 12W RGBWA  
光束角度: 25° / 40° 可选  
灯珠寿命: ≥ 50000hours  
控制模式: DMX512、自走、主从、声控  
DMX 通道: 7/10/35/95CH  
防护等级: IP65 工作环境温度: -25-60°C  
DMX 信号线最大连接数量: 30pcs  
灯具尺寸: 100\*15\*19cm 7.5KG

Voltage: AC90-240V 50-60Hz  
LED: 18 12W RGBWA  
Beam angle: 25° / 40° selectable  
Lamp beads life: ≥ 50000 hours  
Control mode: DMX512, self-propelled, master-slave, voice-activated  
DMX channel: 7/10/35/95CH  
Protection class: IP65  
Working environment temperature: -25-60° C  
DMX signal line maximum connection number: 30pcs  
Lamp size: 100\*15\*19cm 7.5KG

36 颗 3W 洗墙灯  
36pcs 3W Wall Washer



**JS-X007**  
电压: AC90-240V, 50/60HZ  
光源: 36\*3W RGB/全彩  
总功率: 120w  
发光角度: 5° / 15° / 25° / 45° / 60° (可选)  
寿命: 10万小时  
控制: DMX512, 主从, 自走  
通道: 3/7CH  
尺寸: 100\*8.8\*8.8cm 4kg

Voltage AC90-240V, 50/60HZ  
Light source: 36\*3W RGB/full color  
Total power: 120w  
Light emitting angle: 5° / 15° / 25° / 45° / 60° (optional)  
Lifetime: 100,000 hours  
Control: DMX512, master slave, self-propelled  
Channel: 3/7CH  
Size: 100\*8.8\*8.8cm 4kg

LED24 颗城市之光  
LED 24 City Lights



**JS-X002**  
技术参数 / Technical Parameters  
频率: 50/60Hz  
功率: 240W  
光源数量: 24 颗 3 合 1 / 4 合 1 (红绿蓝白) LED  
光源寿命: 6-10 万小时  
调光: 0-100% 频闪: 1-20 次 / 秒  
控制方式: 标准 DMX512 信号, 3 芯接口, 主从控制、自走模式  
DMX 通道: 4/8CH

Input voltage: AC90-240V  
Frequency: 50/60Hz  
Power: 240W  
Light source quantity: 24PCS 10W, 3in1/4 in 1 LED (RGBW)  
Light life: 6-100 thousands  
Dimmer: 0-100%  
Control: DMX512, master-slave, auto, sound  
Channel: 4/8CH

14 颗 4 色单点单控洗墙灯  
14 4-color single-point single-control wall washer



**JS-X004**  
技术参数 / Technical Parameters  
LED: 14x10W RGBW 4in1 LEDs, 每颗灯珠 RGBW 颜色均可单独控制;  
透镜角度: 15°, 25°, 35°, 45° 可选;  
操作模式: DMX、主 / 副机, 声控模式;  
DMX 通道: 2/4/6/9/56/58 通道模式可选择;  
输入电源: AC90-240V 宽电压范围输入;  
消耗功率: 最大 200W;  
防护等级: IP65。

LED: 14x10W RGBW 4in1 LEDs, Each bead RGBW color can be individually controlled;  
Lens angle: 15°, 25°, 35°, 45° optional;  
Operation mode: DMX, master/slave, voice control mode;  
DMX channel: 2/4/6/9/56/58 channel mode selectable;  
Input power: AC90-240V wide voltage range input;  
Power consumption: Max 200W;  
Protection class: IP65.

12/24 颗 LED 洗墙灯  
12/24pcs 3W Wall Washer



**JS-X006**  
技术参数 / Technical Parameters  
电压: AC90-240V/50-60Hz  
功率: 80W  
光源: 12/24颗\*3W RGB三合一  
使用寿命: 6-10万小时  
控制模式: DMX512, 声控, 自走, 主从  
通道: 8通道  
工作温度: -20°C+40°C

Voltage: AC90-240V / 50-60Hz  
Power: 80W  
Light source: 12/24pcs \* 3W RGB 3in1  
Life: 6-10 million hours  
Control mode: DMX512, sound, auto, master-slave  
Channel: 8 channels  
Material: cast aluminum chassis, black  
Operating temperature: -20°C +40°C



**JS-T001**  
2-7KW 摇头换色探照灯  
2-7KW Moving Head Discolor Searchlight



技术参数 / Technical Parameters  
电压: AC110V/220V/380V 50-60Hz  
灯泡: XHA2KW-5KW  
灯泡寿命: 800 小时 (600 小时后开始光衰)  
色温: 6000K  
防护等级: IP44 户外使用  
特殊设计反光碗, 产生最高亮度输出  
扫描角度: 水平 345 度, 垂直 275 度  
具有光敏纠错编码, 自动校正灯具复位, 不失步, 定位更精确  
灯泡开关: DMX512 信号控制  
颜色: 具有白光 + CMY 换色系统, 可组合出多种颜色  
光柱: 大小直径 320mm, 平行光输出  
控制: DMX512 信号 单机自走 主从机自走 通道: 12CH  
新型智能主板, 在不需控台情况下可在显示板上编程, 实现单机自走模式及主从机自走模式, 使灯具更加稳定的运行!  
灯具尺寸: 79\*69\*140cm 130kg  
木箱包装: 84.5\*74.5\*149cm 154kg  
航空箱包装: 89\*80\*161cm 194kg

Voltage: AC110V/220V/380V 50-60Hz  
Lamp spec: XHA2KW-5KW  
Lamp life: 800 hours (light decay after 600 hours)  
Color Temperature: 6000K  
Control Mode: Master slave Mode, Auto Mode, DMX 512 degree 12CH degree  
IP Rate: IP44 outdoor use  
Special reflector, produce a maximum brightness efficiency  
X-axis: 345°, with a photosensitive error correction function, Be able to automatic calibration lamps homing  
X-axis fine-tuning: 5.4° fine-tuning, more accurate positioning  
Y-axis: 275° with a photosensitive corrective function, Be able to automatic calibration lamps homing  
Y-axis fine-tuning: 5.4° fine-tuning, more accurate positioning  
Color: White+CMY color change system, can combined a variety of colors.  
Light beam: size of diameter of 320mm.  
Parallel optical outputs  
With over-voltage, overheating, overload, short circuit protection.  
Size: 79\*69\*140cm 130kg  
Wooden case: 84.5\*74.5\*149cm 154kg  
Flight case: 89\*80\*161cm 194kg



**JS-T003**  
2-5K 空中玫瑰探照灯  
2-5KW Sky Rose Search Light



技术参数 / Technical Parameters  
电压: AC110V/220V/380V 50-60Hz  
灯泡: XHA2KW-5KW  
灯泡寿命: 800 小时 (600 小时后开始光衰)  
防护等级: IP44 户外使用  
水平运动角度: 110° 可定制 180° / 360°  
光束旋转角度: 内 360° 旋转  
垂直运动角度: 45° 手动调节  
抗电强度: 7.5KV  
控制模式: 单机模式  
颜色效果: 可选白色、红色、蓝色、绿色、黄色  
采用 JAPAN 进口材料风机  
防护等级: IP44 (户外使用)  
外形尺寸: 69\*58\*101cm 50kg  
木箱尺寸: 73\*61\*105cm 68kg  
航空箱尺寸: 77\*66\*122cm 83kg

Voltage: AC110V/220V/380V 50-60Hz  
Lamp spec: XHA2KW-5KW  
Lamp life: 800 hours (light decay after 600 hours)  
Adjustment angle: Horizontal 110° (Can be customized 180° / 360°)  
Vertical: 45°  
IP Rate: IP44  
Intensity of electricity resistance: 7.5KV  
Insulation resistance: >2MΩ  
Control mode: Stand-alone mode  
Color effect: white, red, blue, green, yellow, are optional  
Size: 69\*58\*101cm 50kg  
Wooden case: 73\*61\*105cm 68kg  
Flight case: 77\*66\*122cm 83kg



**JS-T002**  
2-7KW 探照灯  
2-7KW Search Light



技术参数 / Technical Parameters  
电压: AC110V/220V/380V 50-60Hz  
灯泡: XHA2KW-5KW  
灯泡寿命: 800 小时 (600 小时后开始光衰)  
色温: 6000K  
防护等级: IP44 户外使用  
特殊设计反光碗, 产生最高亮度输出  
水平运动角度: 110° 可定制 180° / 360°  
垂直运动角度: 45° 手动调节  
抗电强度: 7.5KV  
出光口径: 350mm  
控制模式: 单机模式  
颜色效果: 可选白色、红色、蓝色、绿色、黄色、紫色  
光通量: 389000-589000LM  
采用 JAPAN 进口材料风机  
防护等级: IP44 (户外使用)  
外形尺寸: 69\*58\*101cm 50kg  
木箱尺寸: 73\*61\*105cm 68kg  
航空箱尺寸: 77\*66\*122cm 83kg

Voltage: AC220V-240V 50-60Hz  
Lamp spec: XHA2KW-5KW  
Lamp life: 800 hours (light decay after 600 hours)  
Color temperature: 6000k  
Adjustment angle: Horizontal 110° (Can be customized 180° / 360°)  
Vertical: 45°  
IP Rate: IP44  
Intensity of electricity resistance: 7.5KV  
Insulation resistance: >2MΩ  
Light beam angle: 0.6° -0.8°  
Light beam: size of diameter of 350mm.  
Parallel optical outputs  
Control mode: Stand-alone mode  
Color effect: white, red, blue, green, yellow, purple are optional  
Size: 69\*58\*101cm 50kg  
Wooden case: 73\*61\*105cm 68kg  
Flight case: 77\*66\*122cm 83kg



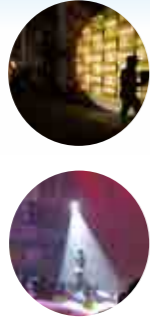
**JS-T004**  
2-5KW 三头探照灯 (可订做四头)  
2-5KW Three Head Search Light



技术参数 / Technical Parameters  
电压: AC110V/220V/380V 50-60Hz  
灯泡: XHA2KW-5KW  
灯泡寿命: 800 小时 (600 小时后开始光衰)  
色温: 6000K  
特殊设计反光碗, 产生最高亮度输出  
水平角度: 110°  
垂直运动角度: 45° 手动调节  
抗电强度: 7.5KV  
绝缘电阻: >2MΩ  
控制模式: 单机模式  
颜色效果: 可选白色、红色、蓝色、绿色、黄色、紫色  
采用 JAPAN 进口材料风机  
内设有调焦, 聚焦光斑大小清晰度调节  
防护等级: IP44 (户外使用)  
外形尺寸: 150\*150\*150cm 155kg  
木箱尺寸: 97\*98\*91cm 116kg  
147\*52\*92cm 75kg

Voltage: AC110V/220V/380V 50-60Hz  
Lamp spec: XHA2KW-5KW single head  
Lamp life: 800 hours (light decay after 600 hours)  
Color temperature: 6000k  
Adjustment angle: Horizontal 110°  
Vertical: 45°  
IP Rate: IP44  
Intensity of electricity resistance: 7.5KV  
Insulation resistance: >2MΩ  
Light beam angle: 0.6° -0.8°  
Control mode: Stand-alone mode  
Color: white, red, blue, green, yellow, purple are optional  
Size: 150\*150\*150cm 155kg  
Wooden case: 97\*98\*91cm 116kg  
147\*52\*92cm 75kg





### JS-ZG001

17R 350/330/380W 追光灯  
17R 350/330/380W Chasing light

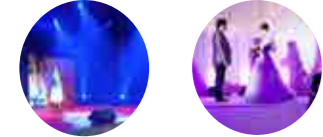
#### 技术参数 Technical Parameters

电压: AC100-240V 50/60Hz  
光源: 5R 200W/7R 230W/15R 330W  
总功率: 450W  
颜色: 红绿蓝黄白  
功能: 调焦, 光圈, 频闪  
灯体纸箱包装尺寸: 60.5X20X24cm  
支架包装尺寸: 95.5X15.5X16cm  
净重: 13.5KG  
毛重: 15.5KG

Technical Parameters  
Voltage: AC100-240V 50/60Hz  
Light source: 5R 200W/7R 230W/15R 330W  
Power consumption: 450W  
Color: white, red, green, yellow, blue  
Function: focus, iris, strobe  
Light carton package size: 60.5X20X24cm  
Stand package size: 95.5X15.5X16cm  
N.W: 13.5KG  
G.W: 15.5KG

### JS-ZG002

460W LED 追光灯  
460W LED Follow Spot Light



#### 技术参数 Technical Parameters

输入电压: AC100-240V, 50/60Hz  
功率: 460W  
光源: COB 420W  
使用寿命: >50,000 小时  
色温: 3200K 或 5600K  
显色指数 (CRI): RA ≥ 90  
光束角度范围: 5° - 65°  
调光亮度: 0-100% 线性调光  
主要特点: 电动变焦, 电动调节光圈大小, 不同投射距离光圈可变焦至相同光斑直径, 红绿蓝黄五色色盘 + 不同大小光圈 GOBO 盘, GOBO 可定制; 灯具小巧轻便, 控制面板简洁易操控。  
外壳材料: 耐高温塑料外壳  
防护等级: IP20  
产品尺寸: 710x220x220mm 脚架尺寸: 870x190x190mm  
净重: 8.8kg(灯体) 4.3kg(支架)  
毛重: 11.5kg(灯体) 5.5kg(支架)

Input voltage: AC100-240V, 50/60Hz  
Power: 460W  
Light Source: COB 420W Lifetime: >50,000 hours  
Color temperature: 3200K or 5600K  
Color Rendering Index (CRI): RA ≥ 90  
Beam angle range: 5° - 65°  
Dimming brightness: 0-100% linear dimming  
Main features: Electric zoom, electric adjustment aperture size, different projection distance aperture can be zoomed to the same spot diameter, red, green, blue, yellow and white colored color plate + different size aperture GOBO disc, GOBO can be customized; lamps are compact and lightweight, control panel is simple and easy to manipulate.  
Shell material: high temperature plastic shell  
Protection class: IP20  
Product size: 710x220x220mm Tripod size: 870x190x190mm  
Net weight: 8.8kg (light body) 4.3kg (bracket)  
Gross weight: 11.5kg (light body) 5.5kg (stand)

### JS-ZG003

7R/5R 追光灯 A 款  
7R / 5R chasing light A section



#### 技术参数 Technical Parameters

电压: AC100-240V 50/60Hz  
光源: 5R 200W/7R 230W  
总功率: 280W/350W  
颜色: 红, 绿, 蓝, 黄, 白  
功能: 调焦, 光圈, 频闪  
灯体纸箱包装尺寸: 75\*33\*28cm  
净重: 12.5KG  
毛重: 13.5KG

Voltage: AC100-240V 50 / 60Hz  
Source: 5R 200W / 7R 230W  
Total power: 280W / 350W  
Color: red, green, blue, yellow, white  
Function: focus, iris, strobe  
Lamp body carton size: 75 \* 33 \* 28cm  
NW: 12.5KG  
GW: 13.5KG



### JS-ZG004

330W Led 追光灯  
330W Led Follow spot light



#### 技术参数 Technical Parameters

电压: AC90-240V 50-60Hz  
光源: 高亮度 330W LED 灯珠  
色温: 7500K  
消耗功率: 500W 电源  
控制: 控制面板与侧面, 或 DMX 控制  
投光距离: 200 米以上  
色彩: 5 颜色 + 白光 (红绿蓝黄橙)  
温度可调: 4600K, 3200K + 雾化  
线性: 0 - 100% 调光 + 频闪功能  
光源: 5 - 100% 调光  
强制冷却: 强制风冷 保护等级: IP20  
过热和过压保护  
净重量: 13 公斤 (不含支架重量)  
体积: 58\*28\*24cm  
纸箱包装尺寸: 74\*32.5\*28cm 15kg  
航空箱包装尺寸: 76\*56\*42cm 37kg

Voltage: AC90-240V 50-60Hz  
Light source: High brightness 330W LED lamp beads  
Color temperature: 7500K  
Power consumption: 500W power supply  
Control: Control Panel and Side, or DMX Control  
Projection distance: 200 meters or more  
Color: 5 colors + white (red, green, blue, yellow, orange)  
Adjustable temperature: 4600K, 3200K + atomization  
Linear: 0 - 100% dimming + strobe function  
Aperture: 5 to 100% dimming  
Forced cooling: forced air cooling Protection level: IP20  
Overheating and overvoltage protection  
Net weight: 13 kg (without bracket weight)  
Volume: 58\*28\*24cm  
Carton Packing Size: 74\*32.5\*28cm 15kg  
Air box packing size: 76\*56\*42cm 37kg

### JS-ZG005

4000W 高效追光灯  
4000W high efficiency follow light



#### 技术参数 Technical Parameters

1; 采用高效光学系统, 亮度高, 性能稳定。光效好, 可变焦范围大。色温理想, 显色指数高。灯体采用全铝合金材料制造, 体积小, 重量轻。  
2; 大功率的风机散热系统保证了灯具安全、持续, 灯体采用全铝合金材料制造, 外形美观, 且散热速度快, 有力的保证了灯具的稳定工作  
4; 电压: AC110V-240V/50-60Hz  
5; 光源: 4000W 疝气放电泡 (丹东安美)  
6; 尺寸: 157 × 40 × 48cm  
7; 色温: 5600K  
8; 最佳投射距离: 120-180M.  
9; 重量: 40kg 10; 电源箱: 35kg

1; The use of high-efficiency optical system, high brightness, stable performance. Good light efficiency, large zoom range. The color temperature is ideal and the color rendering index is high. The lamp body is made of all-aluminum alloy material, with small size and light weight.  
2; The high-power fan cooling system ensures that the lamp is safe, continuous, and the lamp body is made of all-aluminum alloy material. The appearance is beautiful, and the cooling speed is fast, which ensures the stable operation of the lamp.  
4; Voltage: AC110V-240V/50-60Hz  
5; Light source: 4000W helium gas discharge bubble (Dandong An Mei)  
6; Size: 157 \* 40 \* 48cm  
7; color temperature: 5600K  
8; The best throw distance: 120-180M.  
9; Weight: 40kg  
10; Power box: 35kg

### JS-TX001

冷焰机  
Cold flame machine



#### 技术参数 Technical Parameters

尺寸: 200 × 215 × 285mm  
重量: 8.5kg  
输入参数: 220VAC, 50/60Hz  
工作功率: 400W  
工作温度: -10°C ~ 50°C  
喷火高度: 1.0-5.0m (高度可调)  
喷射方向: 垂直向上  
接口类型: 双 DMX 接口, 双 AC 电源接口

Size: 200 × 215 × 285mm  
Weight: 8.5kg  
Input parameters: 220VAC, 50/60Hz  
Working power: 400W  
Working temperature: -10° C-50° C  
Spray height: 1.0-5.0m (adjustable height)  
Spray direction: vertical upward  
Interface Type: Dual DMX Interface, Dual AC Power Interface

### JS-TX003

1500W 3W 3in1LED 气柱烟机  
1500W LED Column Fog Machine



#### 技术参数 Technical Parameters

电压: AC110/230V 50-60Hz  
功率: 1500W  
灯珠: 12/24 RGB LED  
预热时间: 8 分钟  
烟油容量: 5 公升  
吸烟距离: 10m  
烟雾覆盖: 2000cu.ft/min

Voltage: AC110/230V 50-60Hz  
Power: 1500W  
Light Beads: 12/24 RGB LED  
Warm-up Time: 8min  
Tank Capacity: 5L  
Spray Distance: 10m  
Smoke Output: 2000cu.ft/min  
Control Mode: DMX512 control, remote control, manual

### JS-TX005

LED 气柱机  
LED CO2 Jet



#### 技术参数 Technical Parameters

输入电压: AC 90-260v 50/60Hz  
功率: 250W  
光源: 12 红绿蓝灯珠加混色  
喷射高度: 8-10M  
通道: 6 CH  
DMX 512: 支持  
毛重: 9KG

Input voltage: AC 90-260v 50 / 60Hz  
Power: 250W  
Light source: 12 pcs led RGB+mix color  
Column height: 8-10M  
Channel: 6 CH  
DMX 512: Support  
Gross weight: 9KG

### JS-TX007

1200W 雪花机  
1200W Snow Machine



#### 技术参数 Technical Parameters

雪花油容量: 5 升  
雪花覆盖面积: 50 立方米  
重量: 9.8kg  
电压: AC110V、220-250V 50/60Hz  
功率: 1200W  
包装尺寸: 585 × 330 × 350mm  
净重: 9.8kg  
毛重: 11kg

Snow Oil Capacity: 5 liters  
Snow Coverage: 50m<sup>3</sup>  
Weight: 9.8kg  
Voltage: AC110V, 220-250V 50/60Hz  
Power: 1200W  
Package size: 585\*330\*350mm  
Net weight: 9.8kg  
Gross Weight: 11kg

### JS-TX009

DMX 3000W/1500W 频闪灯  
DMX 3000W/1500W Strobe Light



#### 技术参数 Technical Parameters

额定电压: AC110 ~ 220V, 50 - 60Hz  
额定功率: 3000W  
光源: 3000W 脉冲管  
保险: 32A  
控制方式: DMX512 / 自动 / 主从模式  
通道: 4 通道  
防护等级: IP20  
外形尺寸: 453 × 132 × 214mm  
重量: 8.5kg

Rated voltage: AC110-220V, 50-60Hz  
Rated power: 3000W  
Light source: 3000W pulse tube  
Insurance: 32A  
Control mode: DMX512 / automatic / master-slave mode  
Channel: 4 channels  
Protection class: IP20  
Dimensions: 453 × 132 × 214mm  
Weight: 8.5kg

### JS-TX002

600W 双雾机  
600W Double Fog Machine



#### 技术参数 Technical Parameters

不需要加热, 特殊的液体;  
节能: 1 垃圾液体可以持久的工作至少 35 小时。  
干燥和薄雾没有水分得到快速传播  
没有气味, 与水分香水混合;  
5.0 秒准备时间;  
交流 220 v ~ 240 v 电压: 50 V / 60 hz 交流 100 v ~ 120 v 50/60Hz  
限制保险: 5 V / 250 v 功率: 600 w  
油箱体积: 1.7 l 3 球迷角度: 可调

1.No need heating up; special liquid;  
2.Energy saving; 1 liter liquid can be lasting working at least 35 hours;  
3.Dry and thin haze without moisture spreads fastly.  
4. No smelling and mix with moisture perfume;  
5.0 second set-up time;  
Voltage: AC 220V-240V 50/60Hz AC 100V-120V 50/60Hz  
Limiting insurance: 5AV250V  
Power: 600W Tank Volume: 1.7L

### JS-TX004

1500W LED 烟机  
1500W LED Hood



#### 技术参数 Technical Parameters

型号: 1500W LED 烟机  
功率: 1500W  
控制方式: LCD control panel, DMX512  
预热时间: 20 seconds  
油箱容量: 2 升  
耗油量 (100%输出): 0.4L / hour  
喷烟量: 50000cu.ft / Min  
电压: AC 110V, 220V ~ 240V 50 / 60Hz  
重量: 11 Kg  
尺寸: 55 0x 280 x 270mm

Model: 1500W LED hood  
Power: 1500W  
Control mode: LCD control panel, DMX512  
Warm-up time: 20 seconds  
Oil bottle Capacity: 2 liters  
Fuel consumption (100% output): 0.4L / hour  
Amount of smoke: 50000cu.ft / Min  
Voltage: AC 110V, 220V ~ 240V 50 / 60Hz  
Weight: 11 Kg  
Size: 55 0x 280 x 270mm

### JS-TX006

双轮大泡泡机  
Big Bubble Machine



#### 技术参数 Technical Parameters

电压: AC 110/230V 50-60Hz ± 10%  
功率: 200W  
泡泡油容量: 2.5L  
泡泡覆盖面积: 200 平方米  
控制方式: 遥控 (30) 米, 手动  
产品尺寸: 415 × 250 × 415mm  
包装尺寸: 620 × 475 × 540mm  
净重: 12kg  
毛重: 13kg

Voltage: AC 110/230V 50-60Hz ± 10%  
Power: 200W  
Bubble Oil Capacity: 2.5L  
Bubble covered area: 200 m<sup>2</sup>  
Control: Remote control (30) meters, manual  
Product Dimensions: 415\*250\*415mm  
Package Size: 620\*475\*540mm  
Net weight: 12kg  
Gross Weight: 13kg

### TX008

皇家礼炮  
Royal Salute



#### 技术参数 Technical Parameters

重量: 响 48KG / 彩 38KG  
规格: 2350\*820\*高 (可调) MM  
电源: 响 12V / 彩 220V 或 12V  
颜色: 金黄 / 喜庆红

Input voltage: AC 90-260V 50 / 60Hz  
Power: 500W  
Flame Height: 2350\*820\*high (adjustable) MM  
Flame Height: 2350\*820\*high (adjustable) MM  
Control Mode: DMX512, Master/Slave, 12V power  
Color: Golden / Happy Red  
Size: 30x30x2cm  
Weight: 6kg

### JS-TX010

720 颗 LED 800W 频闪灯  
720 LED 800W strobe light



#### 技术参数 Technical Parameters

电源输入: 110V-220V, 50/60Hz  
功耗: 268W  
光源: RGB 或白色 5050 0.3W 超亮 LED  
LED: 1056pcs, 单个段 132pcs  
色温: 5000K  
DMX 模式: 1,5,8,12 (白色版) 2,7,16,28 (RGB 版)  
DMX 端口: 3 针, 5Pin XLR  
线性平滑调光: 0-100%  
频闪频率: 0-650 ms @ 50Hz AC, 0-530 ms @ 60Hz AC

Power input: 110V-220V, 50Hz-60Hz  
Power consumption: 268W  
Lighting sources: RGB or white 5050 super bright LED 0.3W  
LED: 1056pcs, individual segment 132pcs  
Color temp: 5000K  
DMX mode: 1/5/8/12 (white version) 2/7/16/28 (RGB version)  
DMX port: 3pin, 5pin XLR  
Linear smooth dimming: 0-100%  
Strobe frequency: 0-650 ms @ 50Hz AC, 0-530 ms @ 60Hz AC

- JS-J001 8 眼全彩激光
- JS-J002 8 眼单红激光
- JS-J003 8 眼单蓝激光
- JS-J004 8 眼单绿激光



8 眼摇头激光灯  
8 eyes shake headlights



● 技术参数/Technical parameters

额定电压: AC110V ~ AC230V ± 10%  
 额定频率: 50Hz ~ 60Hz  
 额定功率: 150W  
 激光颜色: RGB 全彩色  
 激光图案: 多种粗光束效果图案  
 激光调制信号: TTL 调制信号  
 控制方式: DMX-512 信号控制、自走模式、声音控制模式、  
 控制通道: 6/14 CH 个 512 通道  
 激光光源: R 红光 :500MW/650NM G 绿光: 80MW/532NM B  
 蓝光: 500MW/450Nw  
 扫描系统: 步进电机  
 扫描角度: ± 25 度  
 冷却系统: 风机强制冷却系统  
 工作环境: 室内  
 ● 产品包装: 纸箱  
 内箱尺寸: 110x14x21 cm  
 外箱尺寸: 112x30x23 cm ( 2 台大包装 )  
 净重: 9.5 KG  
 毛重: 12 KG

Rated voltage: AC110V ~ AC230V plus or minus 10%.  
 Rated frequency: 50Hz ~ 60Hz.  
 Rated power: 150W.  
 Laser color: full color RGB.  
 Laser pattern: a variety of coarse beam effect patterns.  
 Laser modulation signal: TTL modulation signal.  
 Control mode: DMX-512 signal control, self-paced mode, sound control mode,  
 Control channel: 6/14 CH 512 channel.  
 Laser light source: R red :500MW/650NM G green light: 80MW/532NM B blue :500MW/ 450Nw.  
 Scanning system: stepping motor.  
 Scanning Angle: plus or minus 25 degrees.  
 Cooling system: fan forced cooling system.  
 Working environment: indoor.  
 Product packaging: carton.  
 Inner box size: 110x14x21cm.  
 Outer box size: 112x30x23cm (2 large package)  
 Net weight: 9.5 KG  
 Gross weight: 12 KG

JS-J005

9 头激光全彩 / 单绿  
9 laser full color / single green



技术参数 Technical Parameters

电压: AC100-240V, 50-60Hz  
 激光颜色: 彩色  
 激光器功率: 500mW、1W、2W、3W、5W、8W、10W、20W (可根据客户要求订做)  
 扫描系统: 高速扫描镜 > 30K/40K; 扫描角度为 ± 20 度, 输入信号: ± 5V, 线性失真 < 2%  
 控制接口: DMX512 输入输出接口、国际 ILDA DB25 标准接口  
 控制方式: 德国 phoenix、美国 Pangolin 专业激光控制软件或其他激光控制软件 / DMX512 / 声控 / 自动

Voltage: AC100 ~ 240V, 50 ~ 60Hz  
 Laser color: color  
 Laser power: 500mW, 1W, 2W, 3W, 5W, 8W, 10W, 20W (can be customized according to customer requirements)  
 Scanning system: high-speed galvanometer scanning > 30K/40K scanning angle > 20 degrees; the input signal: ± 5V, linear distortion < 2%  
 Control interface: DMX512 input output interface, the international ILDA DB25 standard interface  
 Control mode: Germany, the United States Phoenix Pangolin professional laser control software or other laser control software/DMX512/sound/automatic

JS-J007

1-7W 全彩 / 单绿激光  
Line Laser Light



技术参数 Technical Parameters

工作电压: AC100-240V 50/60Hz 额定功率: < 900W  
 扫描系统: 40K 高速扫描镜 (可升级至 60K), 光学角度 ± 30°; 输入信号 ± 5V; 线性失真 < 2%  
 激光调制: TTL 调制 (模拟可选)  
 光束直径及发散角: 5mm: < 2mrad  
 控制模式: 声控 (带黑场) / 自走 / 主从机 / DMX512 (24CH) 兼容 ILDA 标准电脑激光软件

Control: Manual Control/Remote  
 Snow coverage: 150m3  
 Voltage: AC110-220V 60/50Hz  
 Power: 2000W  
 Weight: 40kg  
 Size: 860\*860\*1300mm

JS-J009

2-4W 全彩摇头激光灯  
2-4W Full Color Moving Head Laser Light



技术参数 Technical Parameters

工作电压: AC100 ~ 240V 50/60Hz; 额定功率: < 1000w  
 X 轴: 540 度 Y 轴: 270 度  
 光束直径及发散角: 5mm: < 2mrad  
 控制模式: 声控 (4 种模式带黑场) / 自走 / 主从机 / DMX512 (25CH)  
 包装尺寸: 34.5\*23\*\*48CM  
 净 / 毛重: 8.5/9.5kg

Operating voltage: AC100-240V 50/60Hz; Rated power: <1000w  
 X axis: 540 degrees Y axis: 270 degrees  
 Beam diameter and divergence: 5mm: <2mrad  
 Control mode: voice control (4 modes with black field)/self-propelled/master/slave/DMX512(25CH)/  
 Packing size: 34.5\*23\*\*48CM  
 Net/Gross weight: 8.5/9.5kg

JS-J011

8-15W 全彩动画激光灯  
8-15W full color animation laser light



技术参数 Technical Parameters

工作电压: AC100-240V 50/60Hz  
 额定功率: < 1200W  
 扫描系统: DT40K 高速扫描镜 (可升级至 60K)  
 输入信号 ± 5V; 线性失真 < 2%  
 光束直径及发散角: 4mm: < 2mrad  
 控制模式: 声控 (带黑场) / 自走 / 主从机 / DMX512 (25CH) / 兼容 ILDA 标准电脑激光软件

Working voltage: AC100-240V 50/60Hz  
 Rated power: <1200W  
 Galvo: DT40K high-speed scanning galvanometer (upgradable to 60K)  
 Input signal: ± 5V; linear distortion < 2%  
 Beam diameter and hair angle: 4mm: <2mrad  
 Control mode: voice (with black) / self-propelled / master/slave / DMX512 (25CH) / compatible ILDA standard computer laser software

JS-J013

激光八爪鱼  
Laser UFO Light



技术参数 Technical Parameters

电源: 90-250VAC  
 频率: 50/60Hz  
 保险丝: BGDGP φ 5 × 20mm 5A  
 总功率: 150W  
 激光器功率: 1600mw  
 产品尺寸: 750 × 730 × 400mm  
 产品重量: 41.0Kg  
 包装重量: 43.3Kg  
 备注: 激光器可做 ( 红绿, 单绿, 红绿蓝 )

Power Supply: 90-250VAC  
 Frequency: 50/60Hz  
 Fuse Wire: BGDGP φ 5\*20mm 5A  
 Rated Power: 150W  
 Laser Power: 1600mw  
 DMX Channel: 17  
 Size: 750\*730\*400mm  
 Product Weight: 41.0kg  
 Package weight: 43.3kg  
 Note: Laser can be RG, G or RGB

JS-J006

8 头激光全彩 / 单绿  
8 full color laser / single green



技术参数 Technical Parameters

电源输入功率: AC110-220V, 50/60Hz  
 额定电压: 150W  
 激光功率: 粗光束 200mW\*2 / 绿 80mW\*4 / 蓝 200mW\*2  
 激光颜色: 红 / 绿 / 蓝 (可选)  
 电机: 步进电机 3 个  
 演示效果: 水平双排激光光束, 具有摇头效果打出激光光束, 水平旋转 540°, 光束垂直旋转 120°, 左右上下摆动, 用控台可以做出频闪, 按顺序亮灯等节目效果。

The power input power: AC110-220 v, 50/60 hz  
 Rated voltage: 150 w  
 Laser power of a thick, light red 200 mw 80 mw \* 4 \* 2 / green/blue 200 mw \* 2  
 Laser color: red/green/blue (optional)  
 3 in the motor, stepping motor  
 Demonstration effect: horizontal double row a laser beam, with shaking effect with a laser beam, horizontal rotate 540°, beam rotated 120°, bobbing around, with the controller can make the stroboscopic, a light show effect such as order.

JS-J008

5-20W 大功率地标激光灯  
5-20W high power landmark laser light



技术参数 Technical Parameters

工作电压: AC100-240V 50/60Hz  
 额定功率: < 2000W  
 激光调制: TTL 调制 (模拟调制可选)  
 控制模式: 自走 / DMX512 (25CH) / 兼容 ILDA 标准电脑激光软件 (可升级 pangolin FB3-se, moncha.net 及 SD 卡控制)  
 旋转角度: 320°  
 防护等级: IP33 (户外全天候使用)  
 包装尺寸: 80\*60\*112CM  
 净 / 毛重: 100/150kg

Working voltage: AC100-240V 50/60Hz  
 Rated power: <2000W  
 Laser modulation: TTL modulation (analog modulation optional)  
 Control mode: Self-propelled / DMX512 (25CH) / compatible ILDA standard computer laser software (upgradeable pangolin FB3-se, moncha.net and SD card control)  
 Rotation angle: 320°  
 Protection class: IP33 (outdoor 24/7 use)  
 Packing size: 80\*60\*112CM  
 Net/Gross weight: 100/150kg

JS-J010

2-5W 全彩单绿激光灯  
2-5W Full Color Single Green Laser Light



技术参数 Technical Parameters

电源: AC100-240V 50/60Hz; < 200W  
 激光功率: RGB 2W, RGB 3W, RGB 5W  
 扫描系统: 25K 高速扫描镜 (可升级至 30/40K) 光学角度 ± 25°; 输入信号 ± 5V; 线性失真 < 2%  
 激光调制: TTL 调制  
 控制模式: 声控 (带黑场) / 自走 / 主从机 / 演示效果: DMX 内置 128 个图案 (也可按尺寸: 535 × 320 × 220mm)

Power Supply: AC100-240V 50 / 60Hz: <200W  
 Laser power: RGB 2W, RGB 3W, RGB 5W  
 Galvanometer: 25K high-speed scanning galvanometer (upgradable to 30 / 40K) optical angle ± 25°; input signal No. ± 5V; linear distortion < 2%  
 Laser modulation: TTL modulation  
 Control mode: voice (with black) / self-propelled / master and slave /  
 Display effects: DMX Built 128 patterns (can also be Size: 535 × 320 × 220mm)

JS-J012

激光人表演系统  
Laser Man Performance System



技术参数 Technical Parameters

扫描系统: 高速扫描, 大角度扫描  
 激光器: 2W 3W 5W (532nm) 温控  
 控制模式: DMX512、声控、自动光束、自动动画、主从同步、PC 控制  
 DMX 功能: 十二通道控制, 具黑场功能  
 电源: 100-250V, 50/60Hz, 50W

Scanning System: high-speed galvanometer, big angle scanning  
 Lasers: 2W 3W 5W (532nm) temperature control  
 Control mode: DMX512, voice-activated, automatic beam, automatic animation, master-slave synchronization, PC control  
 DMX function: twelve channel control, a black field function  
 Power: 100 ~ 250V, 50 / 60Hz, 50W

JS-J014

美国穿山甲软件  
American Pangolin Software



技术参数 Technical Parameters

可实时对单个节目或者全部节目的旋转角度、旋转速度、色彩、颜色循环、形状、位置、扫描速度等进行调节设定。  
 设定时间间隔, 音乐节拍驱动, 手动  
 每个节目可以设置多达 512 个 DMX 通道。节目数不限。

The rotation angle, rotation speed, color, color cycle, shape, position, and scanning speed of a single program or all programs can be adjusted in real time.  
 Set time interval, beat beat, manual  
 Up to 512 DMX channels can be set per program.  
 The number of programs is not limited.





### JS-K001

MA2 控制台  
MA2 Console

#### 技术参数 Technical Parameters

采用工业屏幕，亮度更高，视角更宽  
内置3个TFT触摸屏 (9吋指令屏+15.4吋x2操作屏) 可外接一个TFT屏  
内置7个DMX输出端口 (3584控制通道) 可外接14台网络扩展  
支持MIDI输入输出  
内置18个电动推杆  
千兆网络接口1个 (支持ART-NET协议)  
USB接口4个，可外接网络扩展器  
最大可支持65536DMX控制通道，独立背光且可调光按键  
可调节屏幕 (角度，亮度)  
2个暖白光的LED鹅颈灯，内置60GB固态硬盘  
内置支持10分钟的UPS保护电源，1个演出文件抽柜

Industrial screens for higher brightness and wider viewing angles  
Built-in 3 TFT touch screens (9" instruction screen + 15.4" x 2 operation screen) can connect a TFT screen  
Built-in 7 DMX output ports (3584 control channels) can connect 14 network extensions  
Support MIDI input and output  
Built-in 18 electric push rods  
Gigabit network interface 1 (supports ART-NET protocol)  
4 USB ports, external network expander  
Supports 65536 DMX control channels, independent backlight and dimmable keys  
Adjustable screen (angle, brightness)  
2 warm white LED gooseneck lights with built-in 60GB SSD  
Built-in support for 10 minutes of UPS protection power, a show file cabinet

### JS-K002

MA 黑马灯光控制台  
MA dark horse lighting console



#### 技术参数 Technical Parameters

4个属性编码轮 (整合按键功能)  
功耗设计: AC165-264V  
功率: 150W多屏控制显卡  
120GB固态硬盘, 4GB DDR3 1600内存  
1个立体声输出接口, 1个LTC输入接口  
2个工作灯接口, 1个千兆网络接口, 1个MIDI输入接口

4 attributes encoder wheel (integrated key function)  
Power Design: AC165-264V  
Power: 150W multi-screen control graphics  
120GB SSD, 4GB DDR3 1600 memory  
1 stereo output interface, 1 LTC input connector  
2 work light interface, 1 Gigabit network interface, 1 MIDI input interface

### JS-K004

2010 珍珠控制台  
2010 Peari Computre Controller



#### 技术参数 Technical Parameters

2048个DMX512通道  
可配置120台电脑灯不同地址码时可配置120台常规灯具不同地址码时  
10个回放推杆，并包含剧场操控方式，120个内置图形  
可保存300个演出程序或场景  
可用MIDI信号或低音、中音、高音声控触发演出程序可外接彩色VGA显示屏  
净重: 12kg  
产品尺寸: 640×440×140mm

2048 DMX512 channels  
Configurable with 120 different address codes for 120 scanners  
10 playback faders, including theater control, 120 built-in graphics  
300 performance programs or scenes can be saved  
Available MIDI signals or bass, midrange, and high-pitched sound-activated performance programs with external color VGA display  
Net weight: 12kg  
Product size: 640 x 440 x 140mm

### JS-K006

1024 控制台  
1024 Console



#### 技术参数 Technical Parameters

DMX512/1990 标准，最大 1024 个 DMX 控制通道，光电隔离信号输出  
最大控制 96 台电脑灯或 96 路调光，使用珍珠灯库  
带背光的 LCD 显示屏，中英文显示  
关机数据保持  
U 盘备份和升级  
专业鹅颈工作灯，适合室内外演出使用 选配  
电源: AC90-240V 50/60Hz 开关电源  
尺寸: 485 × 420 × 105mm

DMX512/1990 standard, maximum 1024 DMX control channels, optically isolated signal output  
Maximum control of 96 scanners or 96 channels of dimming, using a pearl library LCD display with backlight, Chinese and English display  
Shutdown data retention  
U disk backup and upgrade  
Professional gooseneck work light, suitable for indoor and outdoor performance use  
Power Supply: AC90-240V 50/60Hz  
Switching Power Supply  
Size: 485 x 420 x 105mm

### JS-K003

老虎控台  
Tiger Touch



#### 技术参数 Technical Parameters

4个属性编码轮 (整合按键功能)  
功耗设计: AC165-264V  
功率: 150W多屏控制显卡  
120GB固态硬盘, 4GB DDR3 1600内存  
1个立体声输出接口, 1个LTC输入接口  
2个工作灯接口, 1个千兆网络接口, 1个MIDI输入接口

4 attributes encoder wheel (integrated key function)  
Power Design: AC165-264V  
Power: 150W multi-screen control graphics  
120GB SSD, 4GB DDR3 1600 memory  
1 stereo output interface, 1 LTC input connector  
2 work light interface, 1 Gigabit network interface, 1 MIDI input interface

### JS-K005

Mini 1000 灯光控台  
Mini 1000 lighting console



#### 技术参数 Technical Parameters

2048个DMX512通道  
可配置120台电脑灯不同地址码时可配置120台常规灯具不同地址码时  
10个回放推杆，并包含剧场操控方式，120个内置图形  
可保存300个演出程序或场景  
可用MIDI信号或低音、中音、高音声控触发演出程序可外接彩色VGA显示屏  
净重: 12kg  
产品尺寸: 640×440×140mm

2048 DMX512 channels  
Configurable with 120 different address codes for 120 scanners  
10 playback faders, including theater control, 120 built-in graphics  
300 performance programs or scenes can be saved  
Available MIDI signals or bass, midrange, and high-pitched sound-activated performance programs with external color VGA display  
Net weight: 12kg  
Product size: 640 x 440 x 140mm

### JS-K007

512 电脑控制台  
512 computer console



#### 技术参数 Technical Parameters

DMX512/1990 标准，最大 1024 个 DMX 控制通道，光电隔离信号输出  
最大控制 96 台电脑灯或 96 路调光，使用珍珠灯库  
带背光的 LCD 显示屏，中英文显示  
关机数据保持  
U 盘备份和升级  
专业鹅颈工作灯，适合室内外演出使用 选配  
电源: AC90-240V 50/60Hz 开关电源  
尺寸: 485 × 420 × 105mm

DMX512/1990 standard, maximum 1024 DMX control channels, optically isolated signal output  
Maximum control of 96 scanners or 96 channels of dimming, using a pearl library LCD display with backlight, Chinese and English display  
Shutdown data retention  
U disk backup and upgrade  
Professional gooseneck work light, suitable for indoor and outdoor performance use  
Power Supply: AC90-240V 50/60Hz  
Switching Power Supply  
Size: 485 x 420 x 105mm

#### 技术参数 Technical Parameters

内置UPS电源，不接入交流220V电可正常工作1小时；  
10宏功能按钮，可让你更快的操作控台；  
20个回放推杆，支持1000个以上的程序回放；  
强大的属性控制窗口，CMY\RGB拾色板系统；  
净总:12KG  
输入电压:110V-220V 50-60Hz

Built-in UPS power supply, without access to AC 220V power can operate normally for 1 hour;  
10 Macro function buttons that allow you to operate the console faster;  
20 Playback Faders, Supports Over 1000 Program Replays; Powerful Attribute Control Window, CMY\RGB Color Picker System;  
Total net: 12KG  
Input voltage: 110V-220V 50-60Hz

#### 技术参数 Technical Parameters

1024个DMX通道，提供2个光隔离DMX输出端口。  
7" TFT-LCD 触摸屏，中英文操作界面。  
4个带背光光电数据控制轮。  
15个重复程序推杆 × 40页，共可保存600个重复程序。最大同时输出15个重复程序。  
最大可储存400个灯具组。  
可调光12V鹅颈工作灯。  
电源: AC100-240V, 50-60Hz  
尺寸: 482mm × 445mm × 180mm  
净重: 约10kg

1024 DMX channels, providing two optically isolated DMX output ports.  
7" TFT-LCD touch screen, Chinese and English interface.  
4 photoelectric data control wheels with backlight.  
15 playback programs puit x 40 pages, a total of 600 replay programs can be saved. Up to 15 repeat programs are output at the same time.  
Up to 400 fixtures can be stored.  
Dimmable 12V gooseneck work light.  
Power supply: AC100-240V, 50-60Hz  
Size: 482mm x 445mm x 180mm  
Net weight: about 10kg

#### 技术参数 Technical Parameters

\* DMX512/1990 标准，512 个 DMX 控制通道，光电隔离信号输出。  
\* 同时控制最多 62 台电脑灯，每灯最大 36 个控制通道，使用动态灯址设置。  
\* 16Bit 的 X/Y 控制精度，可设定 X/Y 轴的正反方向。  
\* 走灯程序的编辑，可实现走灯步的复制、粘贴、增加 (插入)、删除等操作。  
\* 可同时运行 6 个走灯程序，62 个预置场景，并可同时对 62 台电脑灯进行提灯操作。  
\* 电源 AC90-250V / 50-60Hz 高性能绿色开关电源。

\* DMX512/1990 standard, 512 DMX control channels, optically isolated signal output.  
\* Simultaneously control up to 62 scanners, with a maximum of 36 control channels per lamp, using dynamic lamp settings.  
\* 16Bit X/Y control accuracy, can set X/Y axis forward and reverse direction.  
\* The editing of the chase program can realize the operations of copying, pasting, adding (inserting), deleting, etc.  
\* 6 chase programs and 62 preset scenes can be run at the same time, and 62 fixtures can be operated at the same time.  
\* Power: AC90-250V / 50-60Hz high-performance green switching power supply.

### JS-K008

阳光 512  
Sun 512



### JS-K010

288 电脑灯光控制台  
288 lighting console computer



### JS-K012

6 路 6kw/12 路 \*4kw 直通箱  
6 way 6kw/12 way \*4kw straight box



### JS-K014

6 路 6kw/12 路 \*4kw 直通箱  
6 way 6kw/12 way \*4kw straight box



### JS-K016

P3/P4 电源箱  
P3 / P4 power supply box



#### 技术参数 Technical Parameters

DMX512/1990 标准，512 个 DMX 控制通道  
可控制 32 台 16 通道电脑灯  
带背光的大屏幕 LCD 显示运行参数  
DMX 信号输出连接器: XLR-D3F x2  
音频线路输入连接器: 1/4" 单声道插座  
可选配 12V 鹅颈工作灯  
产品尺寸: 485 × 400 × 110mm  
产品重量: 6.9kg

DMX512/1990 standard, 512 DMX control channels  
Can control 32 16-channel computer lights  
Large LCD display operating parameters with backlight  
DMX signal output connector: XLR-D3F x2  
Audio Line In Connector: 1/4" Mono Outlet  
Optional 12V gooseneck work light  
Product size: 485 x 400 x 110mm  
Product weight: 6.9kg

#### 技术参数 Technical Parameters

288 个 DMX 通道，2 个光隔离 DMX 输出端口。  
最大可控制 36 个灯具。  
支持控制 40 通道以内的电脑灯。LCD 中英文菜单显示。2 个光电数据控制轮，提供良好的手感和更长的使用寿命。  
走灯程序暂停和 BLACKOUT 功能。  
接受标准 MIDI Master 设备控制，或以主-从方式实现两台 Colour 288 并机工作。  
电源: AC100V-240V, 50-60Hz  
尺寸: 482\*267\*95mm  
净重: 约 4.5kg

288 DMX channels, 2 optically isolated DMX output ports.  
Up to 36 fixtures can be controlled.  
Supports control of scanners within 40 channels. LCD English menu display. Two photoelectric data control wheels provide good feel and longer operating life.  
Chase program pauses and BLACKOUT function.  
Accept standard MIDI Master device control, or master-slave mode to implement two Colour 288 concurrently.  
Power supply: AC100V-240V, 50-60Hz  
Size: 482\*267\*95mm Net weight: about 4.5kg

#### 技术参数 Technical Parameters

舞台电源直通箱  
输入: 三相四线制 AC380V±10%  
频率 50Hz±5%  
输出: 12\*4KW  
可适用于任何负载过载与短路双重保护，高分断空气开关  
A B C 三相工作指示灯以及 12 路分路工作指示灯，每路可单独控制  
外形尺寸: 490\*480\*125mm  
重量: 10.5KG

Stage power through case  
Entered: three phase four wire system  
AC380V ± 10%  
Frequency 50Hz ± 5%  
Output: 12\*4kw  
Can be applied to any load overload and short circuit of double protection, high air switch  
A B C three-phase working lights and 12 road branch work lights, each can be individually controlled  
Dimension: 490\*480\*125mm  
Weight: 10.5KG

#### 技术参数 Technical Parameters

输入: 三相四线制 AC380V±10%  
频率 50Hz±5%  
输出: 12\*4KW  
可适用于任何负载过载与短路双重保护，高分断空气开关  
A B C 三相工作指示灯以及 12 路分路工作指示灯，每路可单独控制  
外形尺寸: 490\*480\*125mm  
重量: 10.5KG

Input: three-phase four-wire AC380V±10%  
Frequency 50Hz±5% Output: 12\*4KW  
Applicable to any double overload and short circuit protection, high breaking air switch  
A B C three-phase work indicator and 12 branching work indicator lights, each of which can be controlled individually  
Dimensions: 490\*480\*125mm  
Weight: 10.5KG

#### 技术参数 Technical Parameters

P3 电源箱是 6 路硅箱或 12 路硅箱以及直通箱相配套使用的供电设备。  
最多可与 3 台硅箱或 3 台直通箱配套使用组架航空机柜，给用户所需电源。  
设 3X10A 和 40A 备用输出座及万能二、三极插座可向用户其它设备提供电源。  
A.B.C 三相电源指示灯 .DMX 信号转接。  
过载与短路双重保护高分断空气开关。

P3 Power Box is 6-way or 12-way silicon silicon box box supporting the use of straight-through and power supply equipment.  
With up to three or three silicon case supporting the use of pass-through boxes assembled aviation Cabinet to provide the necessary power.  
Let 3X10A 40A and standby output and universal seat two. Three-pole socket to provide power to the users of other devices.  
A.B.C three-phase power indicator .DMX signal transfer.  
Overload and short circuit dual protection score off air switch.

### JS-K009

240 控制台  
240 Computer Light Console



### JS-K011

240 控制台  
240 Computer Light Console



### JS-K013

4 路、8 路信号放大器  
4-way, 8-way signal amplifier



### JS-K015

6\*6kw 数码硅箱  
6\*6kw digital silicon box



### JS-K017

24 路舞台流动电柜  
24-way stage flow cabinet



#### 技术参数 Technical Parameters

电压 / 频率: 220-240V 50/60Hz  
功能特征:  
有 12 个 Scanner, 每个 Scanner 中包含 16 个通道, 分 A 页和 B 页  
可编程 30 个 Bank, 每个 Bank 中包含 8 个 Scene  
可编程 6 相 Chase, 每个 Chase 可编 240 步 (即 30 个 Bank/Scene)

Voltage/Frequency: 220-240V 50/60Hz  
Functional features:  
There are 12 Scanners. Each Scanner contains 16 channels, divided into A and B pages.  
Programmable 30 Banks with 8 Scenes in Each Bank  
Programmable 6-phase Chase with 240 steps per Chase (ie 30 BankScenes)

#### 技术参数 Technical Parameters

电压 / 频率: 220-240V 50/60Hz  
功能特征:  
有 12 个 Scanner, 每个 Scanner 中包含 16 个通道, 分 A 页和 B 页  
可编程 30 个 Bank, 每个 Bank 中包含 8 个 Scene  
可编程 6 相 Chase, 每个 Chase 可编 240 步 (即 30 个 Bank/Scene)

Voltage/Frequency: 220-240V 50/60Hz  
Functional features:  
There are 12 Scanners. Each Scanner contains 16 channels, divided into A and B pages.  
Programmable 30 Banks with 8 Scenes in Each Bank  
Programmable 6-phase Chase with 240 steps per Chase (ie 30 BankScenes)

#### 技术参数 Technical Parameters

8 路独立放大驱动输出  
信号放大整形功能, 延长信号传输距离  
增强数据总线接入设备数量的能力 保护灯光控制台 DMX512 输出接口  
故障现场隔离, 提高数字式灯光控制系统的安全运行可靠性  
供电电源: AC90V-240V 50Hz/60Hz 19" 1U  
净重: 1.85kg  
毛重: 2.3kg  
包装尺寸: 530 × 180 × 100mm

8 independent amplification drive output  
Signal amplification shaping function to extend signal transmission distance  
The number of devices to enhance the ability of the data bus access protection DMX512 lighting console output interface  
Failure site isolation, improve the safe operation reliability of digital lighting control systems  
Power supply: AC90V-240V 50Hz/60Hz 19" 1U  
Ne Weight: 1.85kg Gross Weight: 2.3kg  
Package size: 530\*180\*100mm

#### 技术参数 Technical Parameters

(1) 供电: 三相五线制 AC380V ± 10%, 频率 50Hz ± 5%。  
(2) 信号接口: 数字双 DMX-512 (1990)。  
(3) 额定功率: 6 路 × 6KW。每个回路最大输出功率可达 7kW。  
(4) 外形尺寸 (mm): L515 × W485 × H133, 整机重量: 18KG。

(1) Power supply: three-phase five-wire AC380V ± 10%, frequency 50Hz ± 5%.  
(2) Signal Interface: Dual DMX-512 (1990).  
(3) Rated power: 6 × 6KW road each circuit maximum output power of up to 7KW.  
(4) Dimensions (mm): L515 × W485 × H133, Machine weight: 18KG.

#### 技术参数 Technical Parameters

(1) 供电: 三相五线制 AC380V ± 10%, 频率 50Hz ± 5%。  
(2) 输入额定电流: 400A, 最大 36 路 × 4KW 可用于任何负载。  
(3) 设有总开关, 过载与短路双重保护高分断空气开关。  
(4) 三相独立电压、电流、监测, 三相 A.B.C 指示灯指示。  
(5) 输出: 24 路 X4KW, 36 路 X4KW, 48 路 X4KW  
(6) 外形尺寸: 国际标准 13U 重量: 80KG

(1) Power supply: three-phase five-wire AC380V ± 10%, frequency 50Hz ± 5%.  
(2) Input Current Rating: 400A, maximum 36 channels × 4KW may be used for any load.  
(3) has a total switch, overload and short circuit dual protection score off air switch.  
(4) an independent three-phase voltage and current monitoring, phase A.B.C light indicates.  
(5) Output: 24 Road X4KW, 36 road X4KW, 48 road X4KW  
(6) Dimensions: international standard 13U Weight: 80KG