



# Shenzhen Worbest Hitech Co.,Ltd.



▶ WE ARE THE BEST FOR YOU



**Worbest**



Scan it to learn more



**Shenzhen Worbest Hitech Co., LTD.**

☎ Sherry: +86-13410699681

☎ +86-755-82875033 / 82879033

🌐 <http://www.worbest.com>

✉ [manager@worbest.com](mailto:manager@worbest.com)

## ▼ About WORBEST

Shenzhen WORBESET is a group company specialized in the research & development, design, solution provision and manufacturing of LED lighting products. Subsidiaries include WORBEST(HK)LIMITED and WORBEST INC located in LA, USA. In order to provide closer and faster service for customers, Worbest has built 5 warehouses located in San Francisco, Los Angeles, New Jersey, Chicago in US .

Worbest covers an area of over 5000 square meters, equipped with 12 production lines, and has more than 300 skilled workers, 33 engineers in R&D department and a 24/7 service team of 28 members.

Worbest focuses on North American market, and main products include residential lighting, commercial lighting and industrial lighting, such as LED Light Engines, flush mount ceiling lights, panel lights, downlights, retrofits, high bays, flood lights and so on. All products have been certified by UL、 ETL、 Energy Star, DLC, FCC, RoHS, CEC, CE, etc. with 3 to 5 years warranty.

Worbest is a reliable supplier that welcomes OEM and ODM orders. Customer-tailored solutions will be offered based on requirements.

Worbest is committed to provide clients with superior-quality products at a competitive price and the highest standard of customer service. Worbest looks forward to building long-term business relationships with customers.

## ▼ Company View



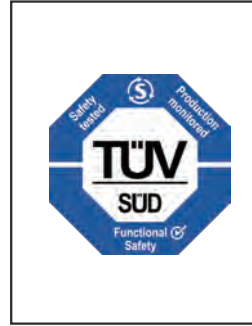


# Certification

## ISO 9001:2015

## ISO14001: 2015

## OHSAS 18001:2007







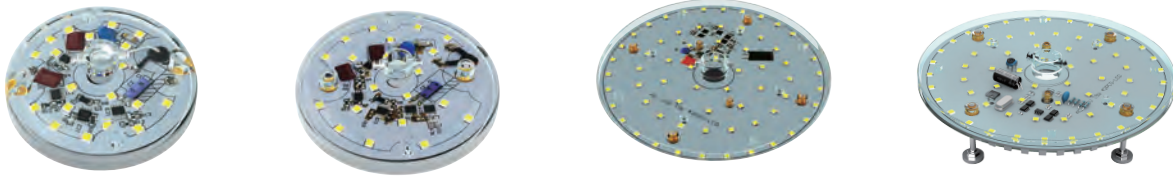
# Catalogue

LED LIGHT ENGINE	01-05
LED SLIM PANEL LIGHT	06-07
LED DISK LIGHT	08
LED DOWN LIGHT	09-10
LED FLUSH MOUNT	11-16
LED SPECIAL CEILING FIXTURES	17-20
LED VANITY LIGHT	21
LED WALL LIGHT	22
LED SHOP LIGHT	23
LED PANEL LIGHT	24-26
LED BULBS	27-31
LED SMART BULBS	32-33
LED FLAMENT BULBS	34
LED STRIP LIGHT	35

# LED LIGHT ENGINE

## AC Round Module

**FCIC**    
 CEC T-24 JA8-2016-E  
 ETL file#5008690



### Features

- Driver On Board design, optimized design, more stable than normal driver.
- Certified complete, passed UL1598C/UL1598/UL8750.
- Retrofit or install, easy to operate, can be replaced in 5 minutes.
- Meet the certificates of Energy Star 2.0 & CEC Title 24.
- Smooth TRIAC dimming feature and compatible with a wide variety of dimmers 100%-10%
- Low flicker and noise free
- 50,000 hours lifespan (term and conditions apply)



### Product Specification

Model Number	Wattage	Lumen	Diameter	Height	CCT	CRI	Dimmable
WOR-MC13113NU	11W	830	3.94"	1.5"	2700K-5000K	80/90	Yes
WOR-MC13133NU	13W	980	3.94"	1.5"	2700K-5000K	80/90	Yes
WOR-MC13153NU	15W	1100	3.94"	1.5"	2700K-5000K	80/90	Yes
WOR-MC13163HU	16W	1166	5.71"	1.57"	2700K-5000K	80/90	Yes
WOR-MC13163NU	16W	1140	5.71"	1.57"	2700K-5000K	80/90	Yes
WOR-MC13193HU	19W	1425	7.36"	1.57"	2700K-5000K	80/90	Yes
WOR-MC13193NU	19W	1420	7.36"	1.57"	2700K-5000K	80/90	Yes
WOR-MC13253HU	25W	2027	7.36"	1.57"	2700K-5000K	80/90	Yes
WOR-MC13253NU	25W	2090	7.36"	1.57"	2700K-5000K	80/90	Yes

# LED LIGHT ENGINE

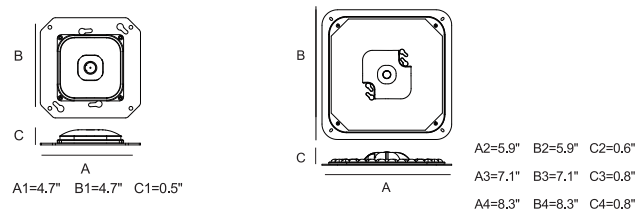
## AC Square Module



### Features

- Driver On Board design, optimized design, more stable than normal driver.
- Certified complete, passed UL1598C/UL1598/UL8750.
- 8-32W can be individually adapted to 6"-16" Ceiling light. Wall sconce and other lights. Can be jointed, the combination also can be installed in a larger size of the lights.
- Retrofit or install, easy to operate, can be replaced in 5 minutes.
- Unique optics design, transmittance up to 98%, beam angle up to 160°
- Automated production, 2-3 weeks lead time.
- Meet the certificates of Energy Star 2.0 & CEC Title 24.
- Smooth TRIAC dimming feature and compatible with a wide variety of dimmers 100%-10%
- 50,000 hours lifespan (term and conditions apply)
- Low flicker and noise free

### Product Dimension



### Product Specification

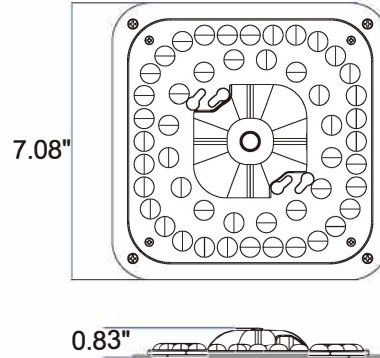
Model Number	Wattage	Lumen	Diameter	Height	CCT	CRI	Dimmable
WOR-LLETBBG3A08	8W	800	4.70"x4.70"	0.5"	2700K-6000K	80/90	Yes
WOR-LLETBBG3A10	10W	1000	4.70"x4.70"	0.5"	2700K-6000K	80/90	Yes
WOR-LLETBBG3A12	12W	1200	4.70"x4.70"	0.5"	2700K-6000K	80/90	Yes
WOR-LLETBBG3A15	15W	1500	5.90"x5.90"	0.6"	2700K-6000K	80/90	Yes
WOR-LLETBBG3A20	20W	2000	7.10"x7.10"	0.6"	2700K-6000K	80/90	Yes
WOR-LLETBBG3A25	25W	2500	7.10"x7.10"	0.6"	2700K-6000K	80/90	Yes
WOR-LLETBBG3A30	30W	3000	8.30"x8.30"	0.8"	2700K-6000K	80/90	Yes



# LED LIGHT ENGINE

**FC IC CAI** <sup>US</sup>     
 CEC T-24 JA8-2016-E  
 UL file#E483573

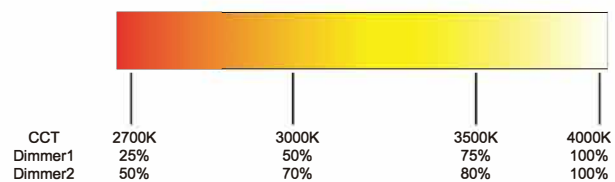
**Warm to Dim**



## Features

- Certified complete, passed UL1598C/UL1598/UL8750.
- Driver on Board LED light Engines
- 120V input, 50/60Hz
- PF>0.9
- CRI 80 or 90 optional
- Unique optics design, transmittance up to 98%, beam angle up to 160°
- Multiple LED array for uniform illumination
- Ambient temperature: -20°C to 45°C
- 50,000 hours lifespan (term and conditions apply)
- Automated production, 2-3 weeks lead time.
- Meet the certificates of Energy Star 2.0 & CEC Title 24.
- Smooth TRIAC dimming feature and compatible with a wide variety of dimmers 100%-10%
- Low flicker and noise free

Warm Dimming Sample



## Product Specification

Model Number	Wattage	Lumen	Diameter	Height	CCT	CRI	Dimmable
WOR-LLES66G3I15W	15W	1350	7.08"	0.83"	2700K-4000K	80/90	Yes
WOR-LLES66G3I20W	20W	1800	7.08"	0.83"	2700K-4000K	80/90	Yes
WOR-LLES66G3I25W	25W	2250	7.08"	0.83"	2700K-4000K	80/90	Yes

# LED LIGHT ENGINE

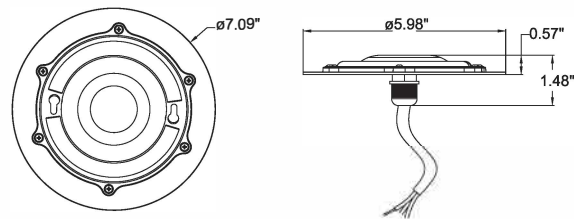
**WET LOCATION  
IP65**



## Features

- Driver On Board design
- All the products certificated by UL, CUL, Energy Star etc.
- Wet Location IP65, outdoor using
- Retrofit or install, easy to operate, can be replaced in 5 minutes.
- Low flicker and noise free
- Automated production, 2-3 weeks lead time.
- Smooth TRIAC dimming feature and compatible with a wide variety of dimmers 100%-10%
- 50,000 hours lifespan (term and conditions apply)

## Product Dimension



## Product Specification

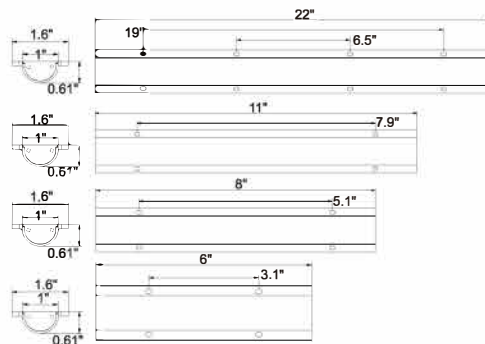
Model Number	Wattage	Lumen	Diameter	Height	CCT	CRI	Dimmable
WOR-CE00MD05S10IPDOB	10W	850	ø5"	0.8"	2700K-6000K	80/90	Yes
WOR-CE00MD06S15IPDOB	15W	1300	ø6"	0.8"	2700K-6000K	80/90	Yes
WOR-CE00MD07S25IPDOB	25W	2150	ø6"	0.8"	2700K-6000K	80/90	Yes
WOR-CE00MD08S30IPDOB	30W	2550	ø7"	0.8"	2700K-6000K	80/90	Yes

# LED LIGHT ENGINE

## AC Strip Module

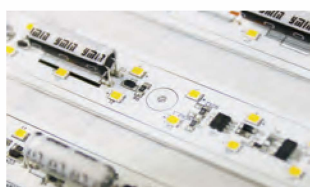


CEC T-24 JA8-2016-E  
UL file#E483573

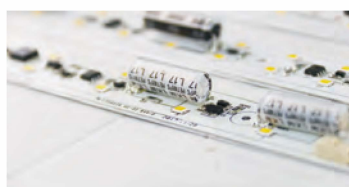


### Features

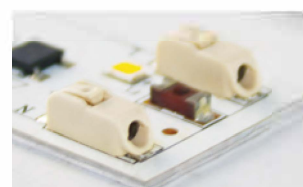
- All the products certificated by UL, CUL, Energy Star etc.
- Driver on Board LED light Engines
- 120V input, 50/60Hz
- PF>0.9
- CRI 80 or 90 optional
- Ambient temperature:-20°C to 45°C
- Smooth TRIAC dimming feature and compatible with a wide variety of dimmers 100%-10%
- 50,000 hours lifespan (term and conditions apply)
- Linkable strip module
- Low flicker and noise free
- Lower THD level (<20%)
- Over voltage, over temperature and input surge protection
- Can be spliced together for unique request



Screw Hole



Capacitance



Terminal

### Product Specification

Model Number	Wattage	Lumen	Diameter	Height	CCT	CRI	Dimmable	
WOR-LLES06G4I08F	8W	720	6"	1.6"	0.61"	2700K-6000K	80/90	Yes
WOR-LLES08G4I12F	12W	1080	8"	1.6"	0.61"	2700K-6000K	80/90	Yes
WOR-LLES11G4I20F	20W	1800	11"	1.6"	0.61"	2700K-6000K	80/90	Yes
WOR-LLES22G4I25F	25W	2250	22"	1.6"	0.61"	2700K-6000K	80/90	Yes



# LED SLIM PANEL LIGHT

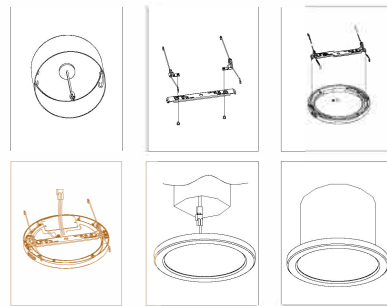
## UL SERIES

**FCIC**   
 CEC T-24 JA8-2016-E  
 UL file#E483573



### Features

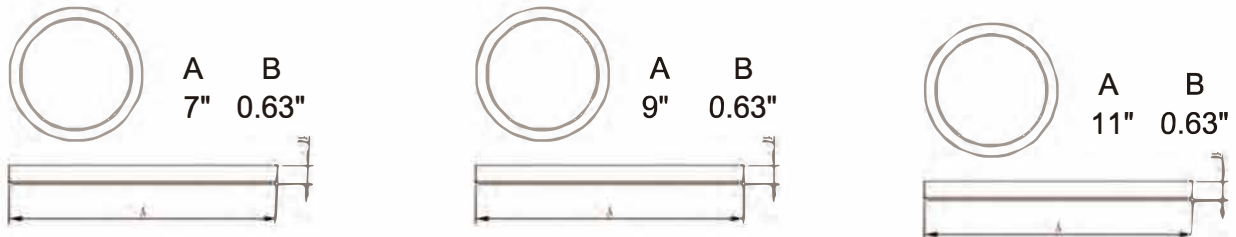
- All the products certificated by UL, CUL, Energy Star etc.
- Driver on Board LED light Engines
- 120V input, 50/60Hz
- PF>0.9
- Wet Location / Damp Location
- CRI 80 or 90 optional
- Ambient temperature:-20°C to 45°C
- Triac dimming of 100%-10%
- 5 years limited warranty (term and conditions apply)



### Benefits

- Ideal replacement for traditional fixtures
- NO UV or IR radiation
- Low flicker and noise free
- No bulb replacement required

### Product Dimension



### Product Specification

Model Number	Wattage	Lumen	Diameter	Height	CCT	CRI	Dimmable
WOR-PL07KD412W	12W	840	7"	0.63"	2700K-4000K	80/90	Yes
WOR-PL09KD415W	15W	1100	9"	0.63"	2700K-4000K	80/90	Yes
WOR-PL12KD420W	20W	1400	11"	0.63"	2700K-4000K	80/90	Yes

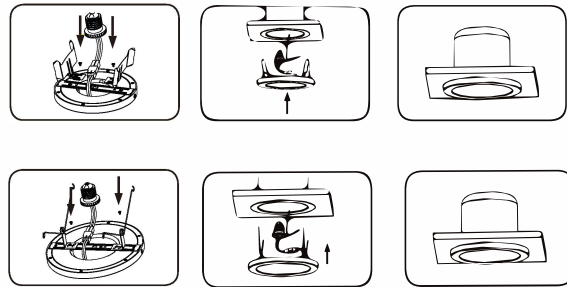
# LED SLIM PANEL LIGHT

## ETL SERIES



### Features

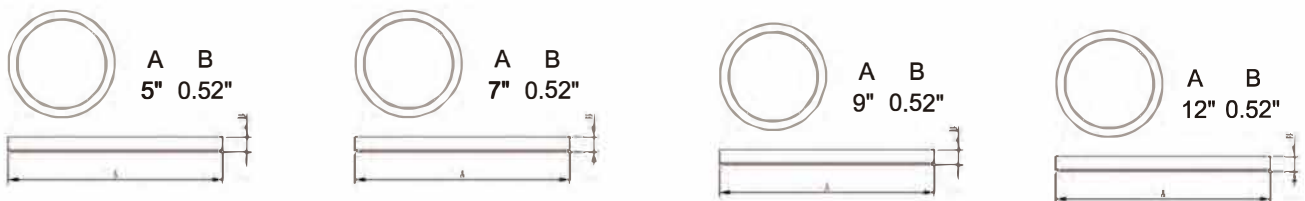
- All the products certificated by ETL/cETL etc.
- Driver on Board LED light Engines
- 120V input, 50/60Hz
- PF>0.9
- Damp Location
- CRI 80 or 90 optional
- Ambient temperature:-20°C to 45°C
- Triac dimming of 100%-10%
- 3 years limited warranty  
(term and conditions apply)



### Benefits

- Ideal replacement for traditional fixtures
- NO UV or IR radiation
- Low flicker and noise free
- No bulb replacement required

### Product Dimension



### Product Specification

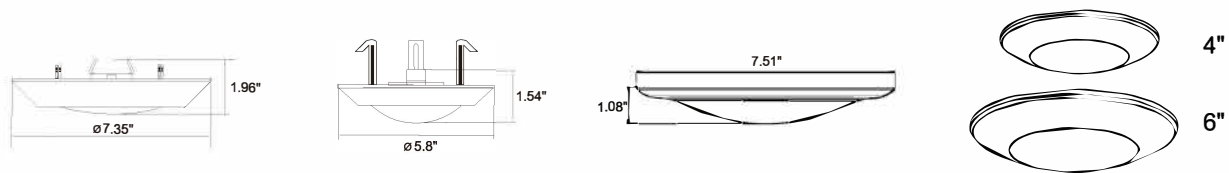
Model Number	Wattage	Lumen	Diameter	Height	CCT	CRI	Dimmable
WOR-PLR5-6W	6W	400	5"	0.52"	3000K-6000K	80/90	Yes
WOR-PLR7-12W	12W	800	7"	0.52"	3000K-6000K	80/90	Yes
WOR-PLR9-18W	18W	1260	9"	0.52"	3000K-6000K	80/90	Yes
WOR-PLR12-24W	24W	1680	12"	0.52"	3000K-6000K	80/90	Yes

# LED DISK LIGHT


  
 CEC T-24 JA8-2016-E
   
 UL file#E483573



## Product Dimension

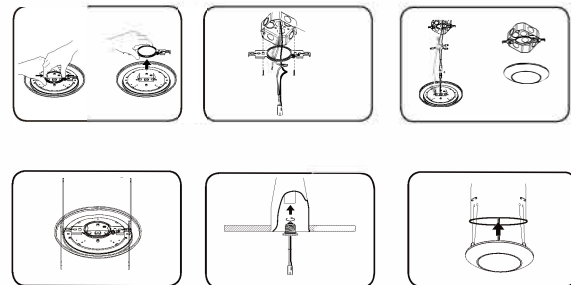


## Features

- All the products certificated by UL/cUL, ETL/cETL Energy Star etc.
- Driver on Board LED light Engines
- 120V input, 50/60Hz
- PF>0.9
- Damp Location
- CRI 80 or 90 optional
- Ambient temperature:-20°C to 45°C
- Triac dimming of 100%-10%
- 5 years limited warranty (term and conditions apply)

## Benefits

- Ideal replacement for traditional fixtures
- NO UV or IR radiation
- Low flicker and noise free
- No bulb replacement required



## Product Specification

Model Number	Wattage	Lumen	Diameter	Height	CCT	CRI	Dimmable
WOR-DL40CYFe411W	11W	680	5.8"	1.54"	3000K-6000K	80/90	Yes
WOR-DL40CYAL3-11W	11W	680	5.8"	1.54"	3000K-6000K	80/90	Yes
WOR-DL60CYFe413W	13W	840	7.35"	1.96"	3000K-6000K	80/90	Yes
WOR-DL60CYAL3-13W	13W	840	7.35"	1.96"	3000K-6000K	80/90	Yes
WOR-DL60CYAL3-17W	17W	1100	7.35"	1.96"	3000K-6000K	80/90	Yes
WOR-DL6DGFO-15W	15W	1050	7.51"	1.08"	3000K-6000K	80/90	Yes



# LED RETROFIT DOWNLIGHT




  
 CEC T-24 JA8-2016-E  
 UL file#E488637



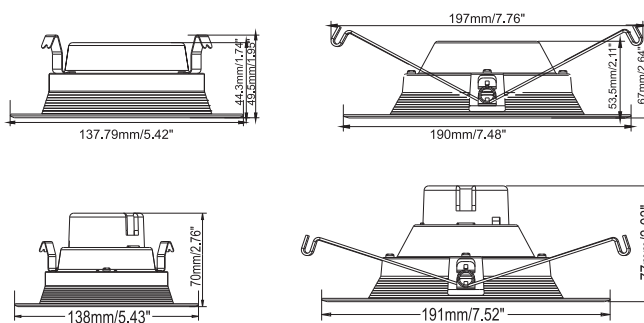
## Features

- All the products certificated by UL/cUL, Energy Star etc.
- 120V input, 50/60Hz
- PF>0.9
- Wet Location And Damp Location
- CRI 80 or 90 optional
- Ambient temperature:-20°C to 45°C
- Triac dimming of 100%-10%
- 5 years limited warranty (term and conditions apply)

## Benefits

- Ideal replacement for traditional fixtures
- NO UV or IR radiation
- Low flicker and noise free
- No bulb replacement required

## Product Dimension



## Product Specification

Model Number	Wattage	Lumen	Diameter	Height	CCT	CRI	Dimmable
WOR-DL4DWP-10W	10W	650	5.42"	1.74"	2700K-6000K	80	Yes
WOR-DL4DWP-13W	13W	850	5.42"	1.74"	2700K-6000K	80	Yes
WOR-DL6DWP-11W	11W	750	7.48"	2.11"	2700K-6000K	80	Yes
WOR-DL6DWP-13W	13W	900	7.48"	2.11"	2700K-6000K	80	Yes
WOR-DL6DWP-18W	18W	1200	7.48"	2.11"	2700K-6000K	80	Yes
WOR-DL4DGWP-10W	10W	700	5.43"	2.76"	2700K-6000K	90	Yes
WOR-DL4DGWP-13W	13W	910	5.43"	2.76"	2700K-6000K	90	Yes
WOR-DL6DGWP-12W	12W	840	7.52"	3.03"	2700K-6000K	90	Yes
WOR-DL6DGWP-15W	15W	1050	7.52"	3.03"	2700K-6000K	90	Yes
WOR-DL6DGWP-18W	18W	1260	7.52"	3.03"	2700K-6000K	90	Yes

# LED RETROFIT DOWNLIGHT

**FCIC**     
 CEC T-24 JA8-2016-E  
 UL file#E488637



Slim



Rotable



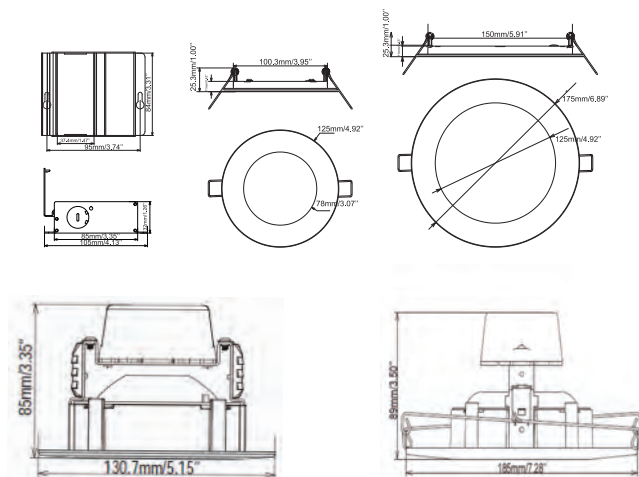
## Features

- All the products certificated by UL/cUL, Energy Star etc.
- 120V input, 50/60Hz
- PF>0.9
- Wet Location And Damp Location
- CRI 80 or 90 optional
- Ambient temperature:-20°C to 45°C
- Triac dimming of 100%-10%
- 5 years limited warranty  
(term and conditions apply)

## Benefits

- Ideal replacement for traditional fixtures
- NO UV or IR radiation
- Low flicker and noise free
- No bulb replacement required

## Product Dimension



## Product Specification

Model Number	Wattage	Lumen	Diameter	Height	CCT	CRI	Dimmable
WOR-DL4DUT-10W	10W	650	4.92"	1.0"	2700K-6000K	80	Yes
WOR-DL6DUT-14W	14W	850	6.89"	1.0"	2700K-6000K	80	Yes
WOR-DL4DGUT-12W	12W	700	4.92"	1.0"	2700K-6000K	90	Yes
WOR-DL6DGUT-15W	15W	900	6.89"	1.0"	2700K-6000K	90	Yes
WOR-DL4DRT-11W	11W	660	5.15"	3.35"	2700K-6000K	80	Yes
WOR-DL6DRT-13W	13W	900	7.28"	3.50"	2700K-6000K	80	Yes
WOR-DL4DGRT-10W	10W	600	5.15"	3.35"	2700K-6000K	90	Yes
WOR-DL6DGRT-13W	13W	900	7.28"	3.50"	2700K-6000K	90	Yes

# LED FLUSH MOUNT

## Square Series

**FCIC**     
 CEC T-24 JA8-2016-E  
 UL file#E483573



JBF



SG



MBF



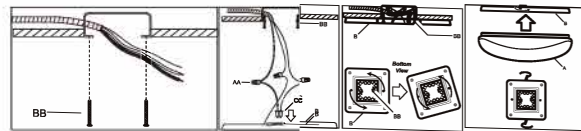
MBG

### Features

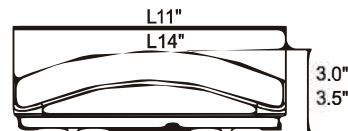
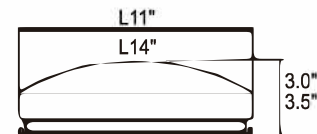
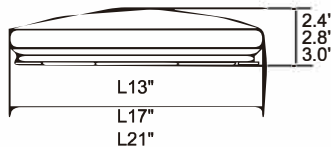
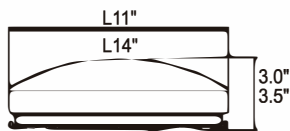
- All the products certificated by UL/cUL, or ETL/cETL, Energy Star etc.
- Driver on Board LED light Engines
- 120V input, 50/60Hz
- PF>0.9
- Damp Location
- CRI 80 or 90 optional
- Ambient temperature:-20°C to 45°C
- Triac dimming of 100%-10%
- 5 years limited warranty (term and conditions apply)

### Benefits

- Ideal replacement for traditional fixtures
- NO UV or IR radiation
- Low flicker and noise free
- No bulb replacement required



### Product Dimension



### Product Specification

Model Number	Wattage	Lumen	Diameter	Height	CCT	CRI	Dimmable
WOR-CE11S15WSX-JBF	15W	1050	11"	3.0"	2700K-5000K	80/90	Yes
WOR-CE14S24WSX-JBF	24W	1750	14"	3.5"	2700K-5000K	80/90	Yes
WOR-CE00CF13SG	24W	1500	13"	2.4"	2700K-5000K	80/90	Yes
WOR-CE00CF17SG	30W	1800	17"	2.8"	2700K-5000K	80/90	Yes
WOR-CE00CF21SG	35W	2200	21"	3.0"	2700K-5000K	80/90	Yes
WOR-CE11S15WSX-MBF/MBG	15W	1050	21"	3.0"	2700K-5000K	80/90	Yes
WOR-CE14S24WSX-MBF/MBG	24W	1750	21"	3.0"	2700K-5000K	80/90	Yes



# LED FLUSH MOUNT

## Round Series

**FCIC**     
 CEC T-24 JA8-2016-E  
 UL file#E483573



JBY



MBY



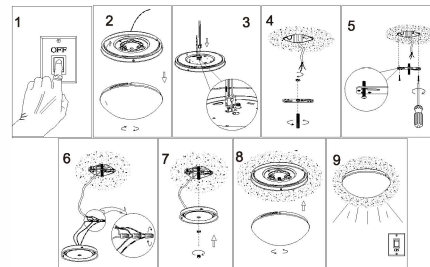
SG

### Features

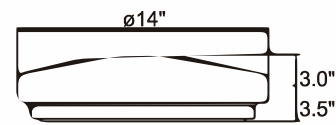
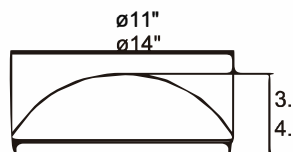
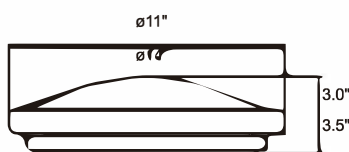
- All the products certificated by UL/cUL, or ETL/cETL, Energy Star etc.
- Driver on Board LED light Engines
- 120V input, 50/60Hz
- PF>0.9
- Damp Location
- CRI 80 or 90 optional
- Ambient temperature:-20°C to 45°C
- Triac dimming of 100%-10%
- 5 years limited warranty  
(term and conditions apply)

### Benefits

- Ideal replacement for traditional fixtures
- NO UV or IR radiation
- Low flicker and noise free
- No bulb replacement required



### Product Dimension



### Product Specification

Model Number	Wattage	Lumen	Diameter	Height	CCT	CRI	Dimmable
WOR-CE11R15WSX-JBY	15W	1050	11"	3.0"	2700K-5000K	80/90	Yes
WOR-CE14R24WSX-JBY	24W	1750	14"	3.5"	2700K-5000K	80/90	Yes
WOR-CE11R15WSX-MBY	15W	1050	11"	3.8"	2700K-5000K	80/90	Yes
WOR-CE14R24WSX-MBY	24W	1750	14"	4.1"	2700K-5000K	80/90	Yes
WOR-CE00CY11SG	15W	1050	11"	3.0"	2700K-5000K	80/90	Yes
WOR-CE00CY14SG	25W	1750	14"	3.5"	2700K-5000K	80/90	Yes

# LED FLUSH MOUNT

**FCIC**     
 CEC T-24 JA8-2016-E  
 UL file#E483573

## Mini Series



06R



08R



0575R



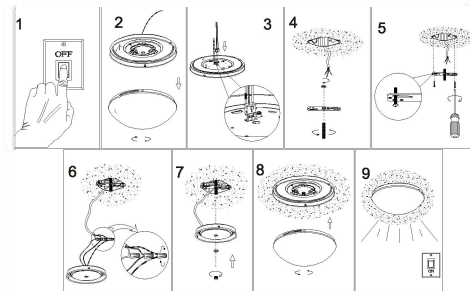
0775R

## Features

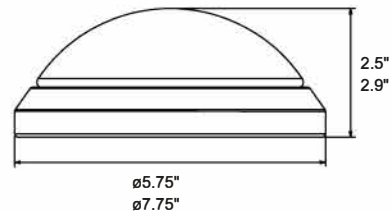
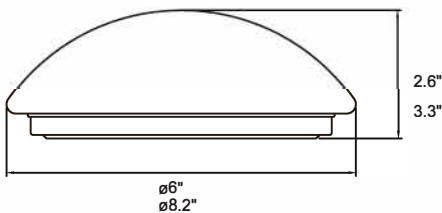
- All the products certificated by UL/cUL, Energy Star etc.
- Driver on Board LED light Engines
- 120V input, 50/60Hz
- PF>0.9
- Damp Location
- CRI 80 or 90 optional
- Ambient temperature:-20°C to 45°C
- Triac dimming of 100%-10%
- 5 years limited warranty (term and conditions apply)

## Benefits

- Ideal replacement for traditional fixtures
- NO UV or IR radiation
- Low flicker and noise free
- No bulb replacement required



## Product Dimension



## Product Specification

Model Number	Wattage	Lumen	Diameter	Height	CCT	CRI	Dimmable
WOR-CEDOB0575R10W	10W	680	5.75"	2.5"	2700K-5000K	80/90	Yes
WOR-CEDOB0775R12W	12W	840	7.75"	2.9"	2700K-5000K	80/90	Yes
WOR-CEDOB06R10W	10W	680	6"	2.6"	2700K-5000K	80/90	Yes
WOR-CEDOB08R12W	12W	860	8.2"	3.3"	2700K-5000K	80/90	Yes

# LED FLUSH MOUNT

## Double-ring Series





  
 CEC T-24 JA8-2016-E  
 UL file#E483573

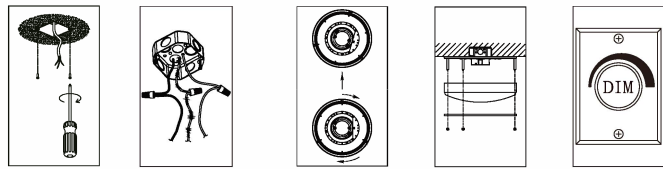


### Features

- All the products certificated by UL/cUL, or ETL/cETL, Energy Star etc.
- Driver on Board LED light Engines
- 120V input, 50/60Hz
- PF>0.9
- Damp Location
- CRI 80 or 90 optional
- Ambient temperature:-20°C to 45°C
- Triac dimming of 100%-10%
- 5 years limited warranty (term and conditions apply)

### Benefits

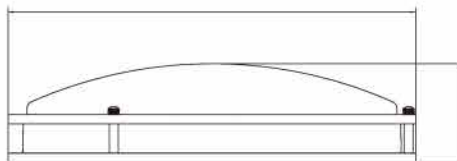
- Ideal replacement for traditional fixtures
- NO UV or IR radiation
- Low flicker and noise free
- No bulb replacement required



### Product Dimension

Optional Size:

8", 10", 12", 14"  
16", 18", 24", 32"



### Product Specification

Model Number	Wattage	Lumen	Diameter	Height	CCT	CRI	Dimmable
WOR-CEDOBDC10RX	15W	1050	10"	3.4"	2700K-5000K	80/90	Yes
WOR-CEDOBDC12RX	15W	1400	12"	3.4"	2700K-5000K	80/90	Yes
WOR-CE20DC14G3DOB	15W/20W/25W	1750	14"	3.9"	2700K-5000K	80/90	Yes
WOR-CE20DC16G3DOB	15W/20W/26W	2100	16"	4.0"	2700K-5000K	80/90	Yes
WOR-CE00DC18DRIVER	30W	2250	18"	4.2"	2700K-5000K	80/90	Yes
WOR-CE00DC24DRIVER	40W	2800	24"	4.2"	2700K-5000K	80/90	Yes
WOR-CE00DC32WPDR	50W	3500	32"	4.4"	2700K-5000K	80/90	Yes

# LED FLUSH MOUNT

## Glass Series

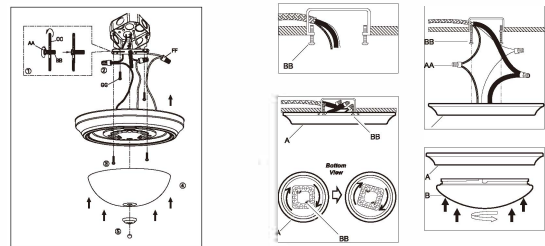


## Features

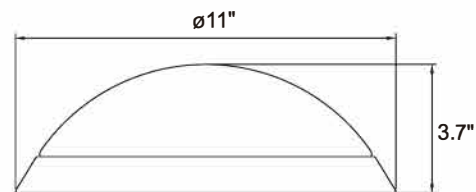
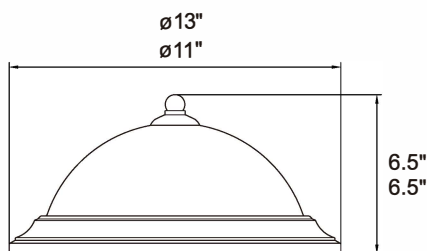
- All the products certificated by UL/cUL, Energy Star etc.
- Driver on board LED light Engines
- 120V input, 50/60Hz
- PF>0.9
- Damp Location
- CRI 80 or 90 optional
- Ambient temperature:-20°C to 45°C
- Triac dimming of 100%-10%
- 5 years limited warranty  
(term and conditions apply)

## Benefits

- Ideal replacement for traditional fixtures
- NO UV or IR radiation
- Low flicker and noise free
- No bulb replacement required



## Product Dimension(inch)



## Product Specification

Model Number	Wattage	Lumen	Diameter	Height	CCT	CRI	Dimmable
WOR-CE00CY11GKDOBIML	15W	1050	11"	3.7"	2700K-5000K	80/90	Yes
WOR-CE03CY11SGKSGCK	15W	1050	11"	6.5"	2700K-5000K	80/90	Yes
WOR-CE03CY13SGKSGCK	20W	1200	13"	6.5"	2700K-5000K	80/90	Yes



# LED FLUSH MOUNT

## Glass Series

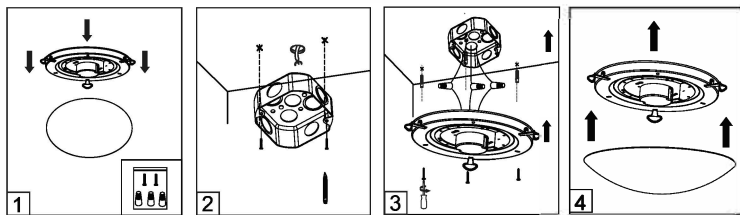
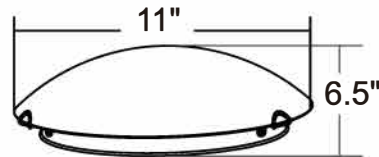


### Features

- All the products certificated by UL/cUL, Energy Star etc.
- Driver on Board LED light Engines
- 120V input, 50/60Hz
- PF>0.9
- Damp Location
- CRI 80 or 90 optional
- Ambient temperature:-20°C to 45°C
- Triac dimming of 100%-10%
- 5 years limited warranty  
(term and conditions apply)

### Benefits

- Ideal replacement for traditional fixtures
- NO UV or IR radiation
- Low flicker and noise free
- No bulb replacement required



### Product Specification

Model Number	Wattage	Lumen	Diameter	Height	CCT	CRI	Dimmable
WOR-CE00CY11CPG3IML	15W	1200	ø11"	6.5"	2700K-5000K	80/90	Yes
WOR-CE00CY11CPG3IML	15W	1200	ø11"	6.5"	2700K-5000K	80/90	Yes
WOR-CE00CY11CPG3IML	15W	1200	ø11"	6.5"	2700K-5000K	80/90	Yes

# LED FLUSH MOUNT

## 5CCT Adjustable



HB



DC

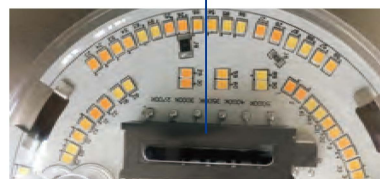


MR

## Features

- All the products certificated by UL/cUL, or ETL/cETL, Energy Star etc.
- Driver on Board LED light Engines
- 120V input, 50/60Hz
- PF>0.9
- Damp Location
- CRI 80 or 90 optional
- Multiple LED array for uniform illumination
- Available in wide range of color temperature from 2700K-5000K
- Ambient temperature:-20°C to 45°C
- Triac dimming of 100%-10%
- 5 years limited warranty (term and conditions apply)

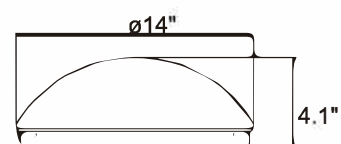
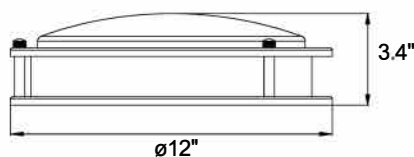
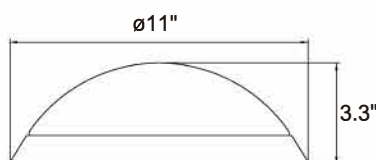
5 Kinds of CCT tunable  
2700K / 3000K / 3500K / 4000K / 5000K



## Benefits

- Ideal replacement for traditional fixtures
- NO UV or IR radiation
- Low flicker and noise free
- No bulb replacement required

## Product Dimension



## Product Specification

Model Number	Wattage	Lumen	Diameter	Height	CCT	CRI	Dimmable
WOR-5CCTDOBHB	18W	1000-1100	Ø11"	3.3"	2700K-5000K	80/90	Yes
WOR-5CCTDOBDC	18W	1000-1100	Ø12"	3.4"	2700K-5000K	80/90	Yes
WOR-5CCTDOBMR	25W	1650-1800	Ø14"	4.1"	2700K-5000K	80/90	Yes

# LED FLUSH MOUNT

## Warm to Dim



MR-11"



MR-14"



DC-12"



DC-14"

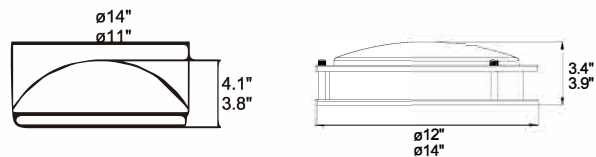
### Features

- All the products certificated by UL/cUL, or ETL/cETL, Energy Star etc.
- Driver on Board LED light Engines
- 120V input, 50/60Hz
- PF>0.9
- Damp Location
- CRI 80 or 90 optional
- Ambient temperature:-20°C to 45°C
- Triac dimming of 100%-10%
- 5 years limited warranty (term and conditions apply)

### Benefits

- Ideal replacement for traditional fixtures
- NO UV or IR radiation
- Low flicker and noise free
- No bulb replacement required

### Product Dimension

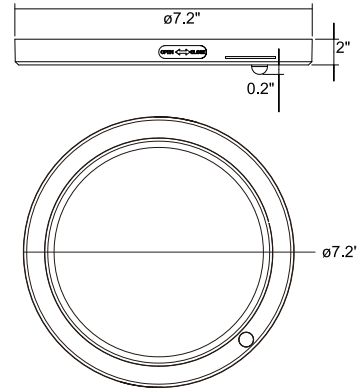


### Product Specification

	WOR-CE00CY11DTWG3DOB	WOR-CE00CY14DTWG3DOB	WOR-CE00DC12DTWG3DOB	WOR-CE00DC14DTWG3DOB
	MR-11"	MR-14"	DC-12"	DC-14"
Input Voltage	120V / 60HZ			
Wattage	15W	25W	15W	25W
Lumen	1100@4000K	1800@4000K	1000@4000K	1700@4000K
Light Efficiency	70	70	65	65
CCT @ 2700K	25% or 40%			
CCT @ 3000K	50% or 70%			
CCT @ 3500K	75% or 80%			
CCT @ 4000K	100%			
Power Factor	>0.90			
Dimension	ø11"x3.8"	ø14"x4.1"	ø12"x3.4"	ø14"x3.9"
CRI	80 or 90 options			

# LED PIR LIGHT

## Sensor



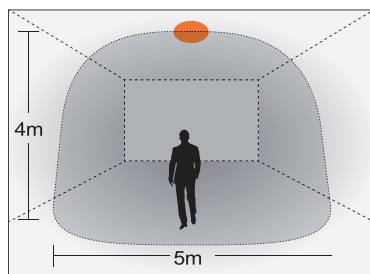
## Features

- UL/cUL, FCC , IC listed
- Energy Star® rated
- Damp location listed
- Wall or Ceiling Mount
- Opaque acrylic diffuser
- Multiple LED array for uniform illumination
- Driver On Board LED Light Engines
- Fixture Material: Plastic or Metal
- 120V Input, 50/60Hz
- PF>0.9
- CRI 80 or 90 optional
- Flicker<30%(≤120HZ)
- Ambient temperature:-20 C to 45 C
- 50,000 hours warranty (term and conditions apply)

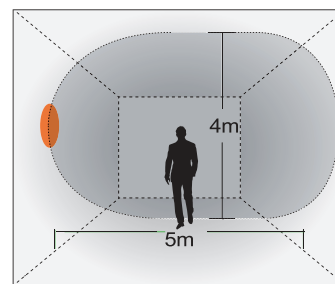
## PIR Sensor Function

- option 1. Only ON/OFF
- option 2. The light brightness gradually increases to 100% (20S) when turn on and gradually decreases to 0% when turn off.
- option 3. The light keeps at 30% brightness when people walk out of detective area.

## Detection Pattern



ceiling mounting pattern (m)



wall mounting pattern (m)

## Product Specification

Model Number	Wattage	Lumen	Diameter	Height	CCT	CRI	Dimmable
WOR-PL07KD412W	12W	840	7.02"	2"	2700K-5000K	80/90	Yes

# LED SENSOR LIGHT

## Sensor



JBY



DC



GK



MBY

### Detection area

Detection area can be reduced by selecting the combination on the DIP switches to fit precisely for each specific application.

### Hold-time

Hold-time means the time period you would like to keep the lamp on 100% after the person has left the detection area.

### Daylight sensor

The daylight threshold can be set on DIP switches, to fit for particular application.

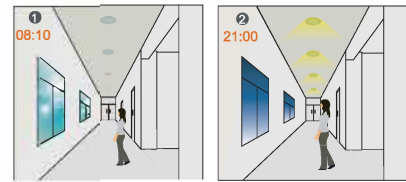
### Operating mode

This is the time period you would like to keep at the low light output level (10%-15% in brightness) before it is completely switched off in the long absence of people.

Note: "0s" means on/off control;

"+" means bi-level control, fixture never switches off.

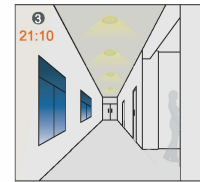
Note: all settings can be tailor-made according to customer request.



When motion detected, but sufficient daylight, light remains OFF.



When motion detected, insufficient daylight, light ON.



After last detection, the light will be dimmed down to the stand-by dimming level (10%, 20%, 30% or 50%).



After the stand-by period, light OFF.

	1	2		
I	ON	ON	100%	I - 100%
II	-	ON	75%	II - 75%
III	ON	-	50%	III - 50%
IV	-	-	25%	IV - 25%

	3	4		
I	ON	ON	5s	I - 5s
II	-	ON	90s	II - 90s
III	ON	-	3min	III - 3mi n
IV	-	-	10min	IV - 10mi n

	5	6		
I	ON	ON	+∞	I - +∞
II	-	ON	50 Lux	II - 50Lu x
III	ON	-	15 Lux	III - 15Lu x
IV	-	-	5 Lux	IV - 5Lu x

	7	8		
I	ON	ON	0s	I - 0s
II	-	ON	30s	II - 30s
III	ON	-	10min	III - 10mi n
IV	-	-	+∞	IV - +∞

### Product Specification

Model Number	Wattage	Lumen	Diameter	Height	CCT	CRI	Dimmable
WOR-CE00CY11G3DOB-JBY	15W	1000	11"	3"	2700K-5000K	80/90	Yes
WOR-CE00CY14 G3DOB-JBY	25W	1700	14"	3.5"	2700K-5000K	80/90	Yes
WOR-CE00DC12G3DOB	20W	1400	12"	3.4"	2700K-5000K	80/90	Yes
WOR-CE00DC14G3DOB	25W	1750	14"	3.9"	2700K-5000K	80/90	Yes
WOR-CE00CY11GKDOBG3IML	18W	1080	11"	3.7"	2700K-5000K	80/90	Yes
WOR-CE00CY11G3DOB-MBY	15W	1100	11"	3.8"	3000K-5000K	80/90	Yes
WOR-CE00CY11G3DOB-MBY	25W	1700	14"	4.1"	3000K-5000K	80/90	Yes



# LED VANITY LIGHT



S224D28



S124D28



S222D20

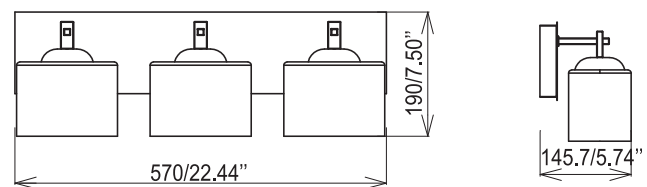
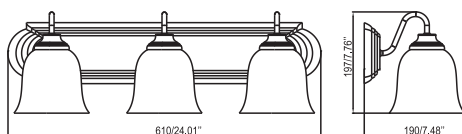
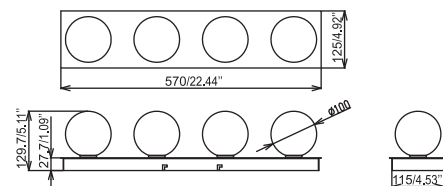
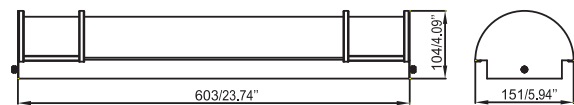


S122D28

## Features

- ETL/cETL, Energy Star, FCC Listed
- 100%-10% Triac Dimming
- Low flicker and noise free
- No UV or IR Radiation
- 120V input, 50/60Hz
- Damp Location
- 35,000 Hours Lifespan

## Product Dimension



## Product Specification

Model Number	Wattage	Lumen	Length	Width	Height	CCT	CRI	Dimmable
WOR-MF-S224D28	28W	2100	23.74"	5.94"	4.09"	2700K-5000K	80/90	Yes
WOR-MF-S124D28	28W	2000	24.01"	7.48"	7.76"	2700K-5000K	80/90	Yes
WOR-MF-S222D20	20W	1800	22.44"	4.92"	5.11"	2700K-5000K	80/90	Yes
WOR-MF-S122D28	28W	2000	22.44"	5.74"	7.50"	2700K-5000K	80/90	Yes

# LED WALL LIGHT



H1812/H1823



S11D23



R1512/R1823

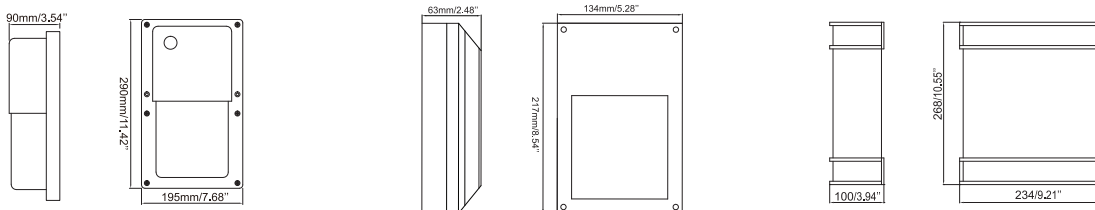
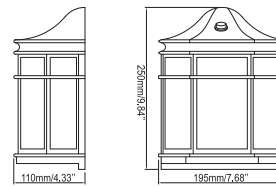


T15D14

## Features

- ETL/cETL, Energy Star, FCC Listed
- 100%-10% Triac Dimming
- Low flicker and noise free
- No UV or IR Radiation
- 120V input, 50/60Hz
- Wet Location
- 35,000 Hours Lifespan

## Product Dimension



## Product Specification

Model Number	Wattage	Lumen	Length	Width	Height	CCT	CRI	Dimmable
WOR-WL-H1812	12W	600	7.68"	4.33"	9.84"	2700K-5000K	80/90	No
WOR-WL-H1823	23W	1200	7.68"	4.33"	9.84"	2700K-5000K	80/90	No
WOR-WL-R1815	15W	1050	7.68"	3.54"	11.42"	2700K-5000K	80/90	No
WOR-WL-R1823	23W	1650	7.68"	3.54"	11.42"	2700K-5000K	80/90	No
WOR-WL-T15D14	14W	700	5.28"	2.48"	8.54"	2700K-5000K	80/90	No
WOR-WL-S111D23	23W	1650	9.21"	3.94"	10.55"	2700K-5000K	80/90	No

# LED SHOP LIGHT



Linkable

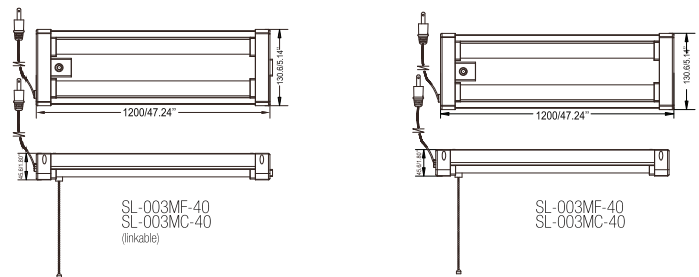


PIR

## Features

- ETL/cETL, Energy Star, FCC Listed
- No UV or IR Radiation
- Lens Optional: Clear and Frosted
- PIR Sensor Optional
- Delay off Functions
- Linkable Optional

## Product Dimension



## Product Specification

Model Number	Wattage	Lumen	Diameter	Height	CCT	CRI	Dimmable
WOR-SL-003MC1/MF1-40	40W	4000/4500	47.24"	5.14"	3000K-5000K	80	No
WOR-SL-003MC1/MF1-40 Linkable	40W	4000/4500	47.24"	5.14"	3000K-5000K	80	No
WOR-SL-003MCS/MFS-40 PIR	40W	4000/4500	47.24"	5.14"	3000K-5000K	80	No
WOR-SL-003MCLS/MFLS-40 Linkable/PIR	40W	4000/4500	47.24"	5.14"	3000K-5000K	80	No
WOR-SL-003MC1/MF1-YS-40 Delay off	40W	4000/4500	47.24"	5.14"	3000K-5000K	80	No
WOR-SL-003MCL1/MF1-YS-40 Linkable/Delay off	40W	4000/4500	47.24"	5.14"	3000K-5000K	80	No
WOR-SL-004MFL-50 Linkable	50W	5000	47.56"	5.2"	3000K-5000K	80	No
WOR-SL-004MFLS-50 Linkable/PIR	50W	5000	47.56"	5.2"	3000K-5000K	80	No
WOR-SL-004MFL-YS-50 Linkable/Delay off	50W	5000	47.56"	5.2"	3000K-5000K	80	No

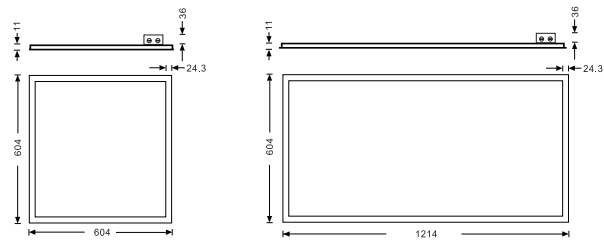
# LED PANEL LIGHT (US series)



**Driver Built-in**

## Features

- UL/cUL, DLC4.2 certified
- Standard and Premium Optional
- 0-10V Dimmable
- Wide Range of Voltage, AC100-277V
- Seamless Frame
- PMMA Light Guide Plate
- 50,000 Hours Lifetime With 5 Years Warranty (Terms and Conditions Apply)



## Product Installation



## Product Specification

Model Number	Dimensions	Power	Standard	Premium	Voltafe	CRI	Dimmable
WOR-DIPL3030	1*1FT	15W/24W	100lm/w	125lm/w	100-277V	80	Yes
WOR- DIPL3060	1*2FT	24W	100lm/w	125lm/w	100-277V	80	Yes
WOR-DIPL30120	1*4FT	26W/32W/40W	100lm/w	125lm/w	100-277V	80	Yes
WOR-DIPL6060	2.2FT	20W/26W/32W/40W	100lm/w	125lm/w	100-277V	80	Yes
WOR-DIPL60120	2.4FT	36W/40W/45W	100lm/w	125lm/w	100-277V	80	Yes

# LED PANEL LIGHT (US series)

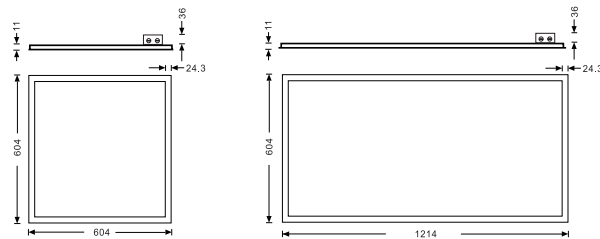


UL file#E492815

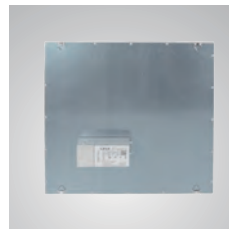
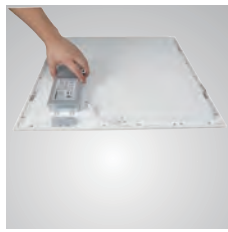


## Features

- UL/cUL, DLC4.2 certified
- Standard and Premium Optional
- 0-10V Dimmable
- Wide Range of Voltage, AC100-277V
- Seamless Frame
- PMMA Light Guide Plate
- 50,000 Hours Lifetime With 5 Years Warranty (Terms and Conditions Apply)



## Product Installation



## Product Specification

Model Number	Dimensions	Power	Standard	Premium	Voltafe	CRI	Dimmable
WOR-PL14-36W	1*4FT	36W	100lm/w	130lm/w	100-277V	80	Yes
WOR-PL22-30W	2*2FT	30W	100lm/w	130lm/w	100-277V	80	Yes
WOR-PL22-36W	2*2FT	36W	100lm/w	130lm/w	100-277V	80	Yes
WOR-PL22-40W	2*2FT	40W	100lm/w	130lm/w	100-277V	80	Yes
WOR-PL24-40W	2*4FT	40W	100lm/w	130lm/w	100-277V	80	Yes
WOR-PL24-50W	2*4FT	50W	100lm/w	130lm/w	100-277V	80	Yes
WOR-PL24-60W	2*4FT	60W	100lm/w	130lm/w	100-277V	80	Yes

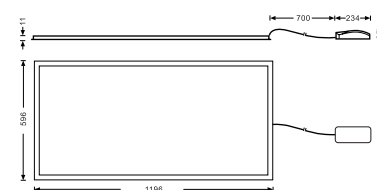
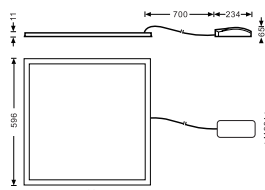


# LED PANEL LIGHT (EU series)

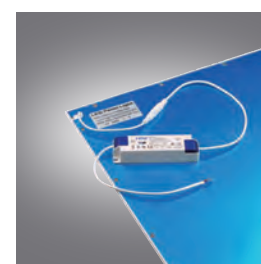
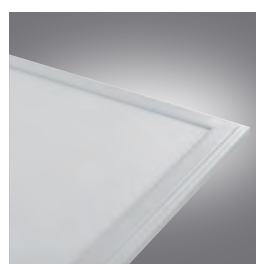


## Features

- TUV/CE,LVD,EMC certified
- Standard and Premium Optional
- Wide Range of Voltage, AC100-240V
- Seamless Frame
- PMMA Light Guide Plate



## Product Installation



## Product Specification

Model Number	Dimensions	Power	Standard	Premium	Voltage	CRI	Dimmable
WOR-PXW-0312-36	296*1196mm	36W	100lm/w	120lm/w	100-240V	80	No
WOR-PXW-0606-36	596*596mm	36W	100lm/w	120lm/w	100-240V	80	No
WOR-PXW-0606-40	596*596mm	40W	100lm/w	120lm/w	100-240V	80	No
WOR-PXW-0612-50	596*1196mm	50W	100lm/w	120lm/w	100-240V	80	No
WOR-PXW-0612-60	596*1196mm	60W	100lm/w	120lm/w	100-240V	80	No

# LED BULBS

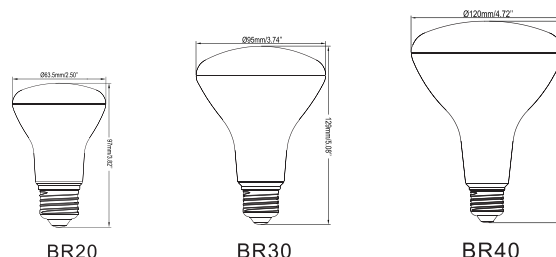
## BR Bulbs



### Features

- UL/CUL, Energy Star, JA8, CEC, Title20, FCC Listed
- 100%-10% Triac Dimming
- No UV or IR Radiation
- CRI 80/90 Optional
- 3 Years Warranty

### Product Dimension



### Product Specification

Bulb Type	Wattage	Lumen	Equivalent	Dimension	CRI	Dimmable	Cert
WOR-BR14	3.5W	250	25W	1.77"x2.56"	80	Yes	UL
	3W	250	25W	1.77"x2.56"	90	Yes	UL
WOR-BR20	4W	310	30W	2.5"x3.82"	80/90	Yes	UL/ES/JA8/T20
	6W	455	45W	2.5"x3.82"	80/90	Yes	UL/ES/JA8/T20
	7W	500/525	50W	2.5"x3.82"	80/90	Yes	UL/ES/JA8/T20
WOR-BR30	8W	650	65W	3.74"x5.12"	80	Yes	UL/ES
	10W	750	65W	3.74"x5.12"	80	Yes	UL/ES
	11W	800/850	65W	3.74"x5.12"	80/90	Yes	UL/ES/JA8/T20
WOR-BR40	12W	1050	80W	4.72"x6.26"	80	Yes	UL/ES
	13W	1000/1050	80W	4.72"x6.26"	80/90	Yes	UL/ES/JA8/T20
	15W	1200	85W	4.72"x6.26"	90	Yes	UL/ES/JA8/T20
	17W	1400	100W	4.72"x6.26"	80	Yes	UL/ES

# LED BULBS

## PAR Bulbs



## Features

- UL/CUL, Energy Star, JA8, CEC, Title20, FCC Listed
- 100%-10% Triac Dimming
- No UV or IR Radiation
- CRI 80/90 Optional
- 3 Years Warranty

## Product Dimension



## Product Specification

Model Type	Wattage	Lumen	Equivalent	Dimension	Beam Angle	CRI	Dimmable	Cert
WOR-PAR20	5W	400	50W	2.48"x3.19"	40	80	No	UL
	7W	500	50W	2.48"x3.19"	30/40	80/90	Yes	UL/ES/JA8/T20
WOR-PAR20(COB)	7W	500	50W	2.48"x3.19"	25/40	80	Yes	UL/ES
WOR-PAR30	11W	850	75W	3.75"x4.57"	30/40	80	Yes	UL/ES
	12W	850	75W	3.75"x4.57"	30/40	90	Yes	UL/ES/JA8/T20
WOR-PAR30(COB)	12W	950	75W	3.74"x4.57"	25/40	80	Yes	UL/ES
WOR-PAR38	11W	900	75W	4.75"x5.16"	40	80	No	UL
	13W	1050	100W	4.72"x5.08"	30/40	80	Yes	UL/ES
	15W	1250	120W	4.72"x5.08"	30/40	80/90	Yes	UL/ES/JA8/T20
	20W	1550/1700	150W	4.72"x5.16"	30/45	80/90	Yes	UL/ES/JA8/T20
WOR-PAR38(COB)	15W	1300	120W	4.72"x5.08"	25/40	80	Yes	UL/ES
WOR-PAR38WPCL-15W(R,B,G,Y)	15W	/	/	5.12"x4.72"	30/40	/	Yes	UL

# LED BULBS

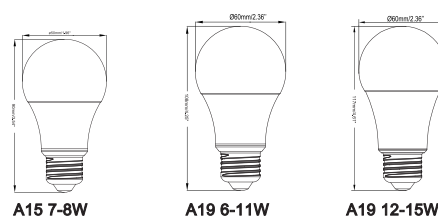
## A Bulbs



## Features

- UL/CUL, Energy Star, JA8, CEC, Title20, FCC Listed
- 100%-10% Triac Dimming
- No UV or IR Radiation
- CRI 80/90 Optional
- 3 Years Warranty

## Product Dimension



## Product Specification

Bulb Type	Wattage	Lumen	Equivalent	Dimension	CRI	Dimmable	Cert
WOR-A15	7W	600	40W	3.49"x1.97"	80	Yes/No	UL
	8W	800	60W	3.49"x1.97"	80	Yes/No	UL/ES
WOR-A19	6W	450/480	40W	4.25"x2.36"	80	Yes/No	UL/ES
	6.5W	470	40W	4.25"x2.36"	90	Yes/No	UL/ES/JA8/T20
	9W	750/800	60W	4.25"x2.36"	80	Yes/No	UL/ES
	10W	800	60W	4.25"x2.36"	90	Yes	UL/ES/JA8/T20
	11W	1100	75W	4.25"x2.36"	80	Yes/No	UL/ES
	12W	1050	75W	4.25"x2.36"	80	Yes/No	UL
	12W	1100	75W	4.61"x2.36"	90	Yes	UL/ES/JA8/T20
	15W	1500/1600	100W	4.61"x2.35"	80	Yes/No	UL/ES
WOR-A19 (Colorful)	9W	/	/	4.41"x2.4"	/	No	UL

# LED BULBS

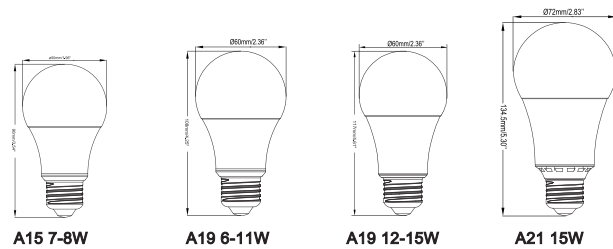
## A Bulbs



### Features

- UL/CUL,Energy Star,JA8,CEC,Title20,FCC Listed
- 100%-10% Triac Dimming
- No UV or IR Radiation
- CRI 80/90 Optional
- 3 Years Warranty

### Product Dimension



### Product Specification

Bulb Type	Wattage	Lumen	Equivalent	Dimension	CRI	Dimmable	Cert
WOR-A21	15W	1600	100W	5.47"X2.81"	80	No	UL/ES
	16W	1550	100W	5.47"X2.81"	80	No	UL
	17W	1600	100W	5.47"X2.81"	90	Yes	UL/ES/JA8/T20
	20W	2150	125W	5.47"X2.81"	80	Yes/No	UL
	22W	2550	150W	5.47"X2.81"	80	Yes	UL/ES
Quebec-Canada (THD)	6W	480	40W	4.25"X2.36"	80	Yes/No	UL/ES
	9W	800	60W	4.25"X2.36"	80	Yes/No	UL/ES
	15W	1600	100W	4.61"X2.36"	80	Yes/No	UL/ES
3 Way	14W	500/1000/1500	40/60/100W	4.61"X2.36"	80	Yes	UL/ES
	19W	650/1300/21500	50/100/150W	5.47"X2.81"	80	Yes	UL/ES



# LED BULBS

## Gu Bulbs



GU10



GU5.3

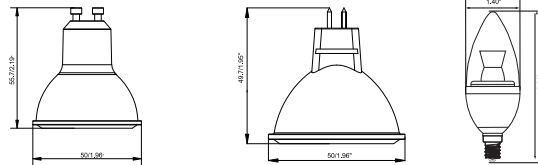


Candle

## Product Dimension

### Features

- UL/CUL,Energy Star,FCC Listed
- 100%-10% Triac Dimming
- No UV or IR Radiation
- CRI 80/90 Optional
- 120V 50/60Hz
- 25,000 Hours Lifespan, 3 Years Warranty



### Product Specification

Model Number	Wattage	Lumen	Equivalent	Dimension	Beam Angle	CRI	Dimmable
WOR-MR16GU10U-4.5W	4.5W	300	40W	1.97"x2.19"	40	80	No
WOR-MR16GU10D-7W(COB)	7W	500	50W	1.97"x2.19"	25/40	80	Yes
WOR-MR16GU5.3D-7W(COB)	7W	550	50W	1.97"x1.96"	25/40	80	Yes
WOR-MR16GU10D-4.5W	4.5W	315	40W	1.97"x2.19"	25/40	80	Yes
WOR-MR16GU5.3D-4.5W	4.5W	315	40W	1.97"x1.96"	25/40	80	Yes
WOR-MR16GU10D-7W	7W	500	50W	1.97"x2.19"	25/40	80	Yes
WOR-MR16GU5.3D-7W	7W	500	50W	1.97"x1.96"	25/40	80	Yes
WOR-MR16GU10D-6W(COB)	6W	500	50W	1.97"x2.19"	25/40	90	Yes
WOR-MR16GU5.3D-6W(COB)	6W	500	50W	1.97"x1.96"	40	90	Yes
WOR-MR16GU10DG-7W(COB)	7W	450	50W	1.97"x2.19"	25/40	90	Yes
WOR-MR16GU5.3DG-7W(COB)	7W	500	50W	1.97"x1.96"	25/40	90	Yes
WOR-CandleDU-4W (Clear)	4W	300	40W	1.40"x3.86"	/	80	Yes
WOR-CandleD-3W (Clear)	3W	225	25W	1.40"x3.86"	/	80	Yes
WOR-CandleD-3W(PC)	3W	225	25W	1.40"x3.91"	/	80	Yes
WOR-CandleD-4.5W(PC)	4.5W	350	40W	1.40"x3.89"	/	80	Yes
WOR-CandleD-4.5W(Clear)	4.5W	325	40W	1.40"x3.83"	/	80	Yes

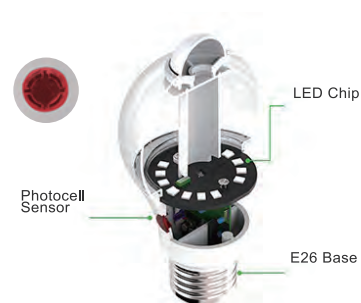
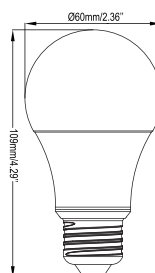
# LED BULBS

## Smart Bulbs



## Features

- UL/CUL,Energy Star,FCC Listed
- Non-Dimmable
- No UV or IR Radiation
- CRI 80/90 Optional
- 120V 50/60Hz
- 10,000 Hours Lifespan, 3 Years Warranty



## Product Specification

Model Number	Wattage	Lumen	Equivalent	Diameter	Height	CCT	CRI
WOR-A19B-6W(Blue Tooth)	6W	480	40	4.61"	2.36"	2700K-6000K	80
WOR-A19S-9W(Dusk To Dawn)	9W	800	60	4.25"	2.36"	2000K-6000K	80
WOR-PAR38WPS-15W(Dusk To Dawn)	15W	1250	/	5.12"	4.72"	2000K-6000K	80
WOR-A21E-6W(Emergency Light)	6W	500	/	5.39"	2.76"	2700K-6000K	80
WOR-A19T-6W(PIR+Dusk To Dawn)	6W	480	40	4.53"	2.36"	2000K-6000K	80
WOR-A19T-9W(PIR+Dusk To Dawn)	9W	800	60	4.53"	2.36"	2000K-6000K	80
WOR-A19N-9W(Motion Sensor)	9W	800	60	4.61"	2.36"	2700K-6000K	80
WOR-A19CE-9W (3 Level-Switch-Diming)	9W	800	60	4.25"	2.36"	2700K-6000K	80
WOR-19CB-9W (CCT-Switch-Tunable in 3 options)	9W	800	60	4.25"	2.36"	2700K-6000K	80

# LED BULBS

Smart Bulbs

**FC IC**    
CEC T-20 JA8-2016-E  
UL file#E482905



## Smart LED Filament Light

This is world-first filament LED Smart light, with filament patent.



### Bright

an output of 600lumens



### Efficient

7 Watts at full brightness



### Dimming

Smooth dimming 1%-100%



### LED life-span

22.8 years (based on 3hrs/day)



### App

iOS 9+, Android 4.1+, Windows10



### Bulbs types

E26, E27 Screw or B22 Bayonet

Use voice with Google Home, Amazon Alexa and Apple HomeKit.



WORKS WITH

**Google Home**



WORKS WITH

**Amazon Alexa**



WORKS WITH

**Apple HomeKit**

# LED BULBS

## Filament Bulbs

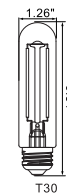
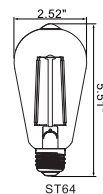
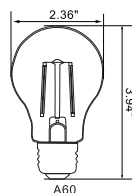
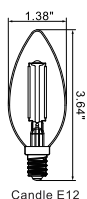


### Features

- UL/CUL, Energy Star, FCC Listed
- 100%-10% Triac Dimming
- No UV or IR Radiation
- CRI 80/90 Optional, Power Factor > 0.95
- 20,000 Hours Lifespan, 2 Years Warranty



### Product Dimension (inch)



### Product Specification

Model Number	Wattage	Lumen	Diameter	Height	CCT	CRI	Dimmable
WOR-C35E122W	2W	200	1.38"	3.64"	2200K-6000K	80/90	Yes
WOR-C35E124W	4W	400	1.38"	3.64"	2200K-6000K	80/90	Yes
WOR-C35E126W	6W	600	1.38"	3.64"	2200K-6000K	80/90	Yes
WOR-ST64E264W	4W	400	2.52"	5.51"	2200K-6000K	80/90	Yes
WOR-ST64E266W	6W	600	2.52"	5.51"	2200K-6000K	80/90	Yes
WOR-ST64E268W	8W	800	2.52"	5.51"	2200K-6000K	80/90	Yes
WOR-A60E264W	4W	400	2.36"	3.94"	2200K-6000K	80/90	Yes
WOR-A60E266W	6W	600	2.36"	3.94"	2200K-6000K	80/90	Yes
WOR-A60E268W	8W	800	2.36"	3.94"	2200K-6000K	80/90	Yes
WOR-T30E264W	4W	400	1.26"	5.31"	2200K-6000K	80/90	Yes
WOR-T30E266W	6W	600	1.26"	7.28"	2200K-6000K	80/90	Yes

# LED STRING LIGHTS



CEC T-20 JA8-2016-E  
UL file#E482905



S14 String Light



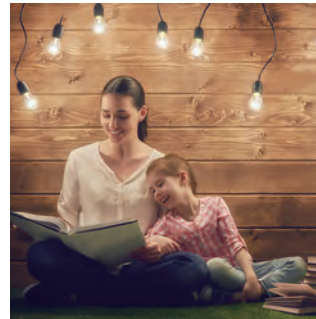
G40 String Light



Smart String Light

## Features

- UL/cUL,ETL/cETL,CE certified;
- Weather proof,outdoor grade lights;
- Linkable string light
- Dimmable and color bulbs optional
- Smart wireless remote control color changeable



## Details



## Product Specification

Model Number	Length	Socket Qty	Bulb Qty	Bulb Type	Plug	Base
WOR-SLS14-48FT-24	48FT/14.6M	24	24/27	S14	2P/3P	E26/E27
WOR-SLS14-48FT-15	48FT/14.6M	15	15/16	S14	2P/3P	E26/E27
WOR-SLS14-33FT-10	33FT/10M	10	10/12	S14	2P/3P	E26/E27
WOR-SLS14-24FT-12	24FT/7.3M	12	12/15	S14	2P/3P	E26/E27
WOR-SLG40-25FT-25	25FT/7.6M	25	25	G40	2P/3P	E26/E27
WOR-SLSMART-24FT-12	24FT/7.3M	12	12/15	S14	2P/3P	E26/E27