



**KINOCEAN**  
*Boats*



Guangdong Ecocampor Vehicle Co., Ltd

Tel: +86-757-81632928 +86-757-81632929 +86-757-81632939

Address: No.2 Xingda Road, A Area of Shishan Technology Industry Zone,  
Nanhai District, Foshan City, Guangdong Province, China.

[www.kinocean.com](http://www.kinocean.com)



**KINOCEAN**  
*Boats*



**More choices to embrace an awesome journey**

Cruising, fishing and playing on the water

# PONTOON BOAT

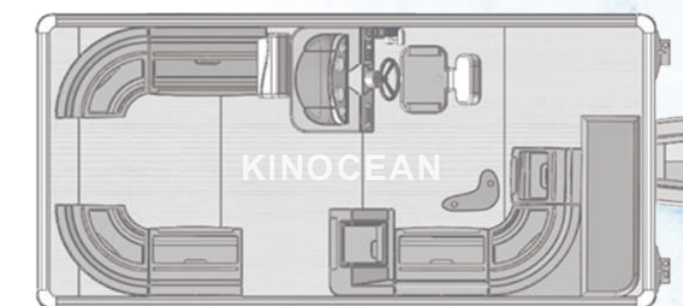


# 17ft PONTOON BOAT



## STANDARD FEATURES

- 25" Diameter Multi-chambered Pontoon Logs
- Extruded Anodized Aluminum Deck Trim
- Elevated Fence Panels for Drainage & Ventilation
- 1.25 Heavy Duty Anodized Railings & Bimini Frames
- UV Treated 8' Bimini Fabric & Cover
- Changing Room with Sundeck
- Chaise Lounge & Forward Lounge Seating with Underseat Storage
- Midship Corner Lounge with Underseat Storage
- Aft Padded Sundeck with Pop-Up Changing Room
- Helm Seat with Flip-Up Bolster
- Sea Grass Vinyl Flooring
- Backlit Instrument Panel with Radio, Tach, Speedo, Voltmeter, 12 Volt Accessory Plug & USB Port
- Waterproof Stereo with Speakers
- Four Stainless Steel Mooring Cleats
- LED Interior Courtesy Lighting
- LED Docking & Navigation Lights
- Rear Boarding Ladder
- Zinc Anode
- 17 Gallon Fuel Tank
- 50HP Standard Motor

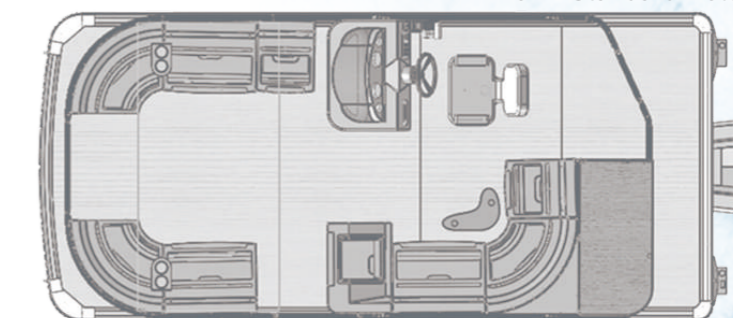


# 19ft PONTOON BOAT



## STANDARD FEATURES

- 25" Diameter Multi-chambered Pontoon Logs
- Extruded Anodized Aluminum Deck Trim
- Elevated Fence Panels for Drainage & Ventilation
- 1.25 Heavy Duty Anodized Railings & Bimini Frames
- UV Treated 8' Bimini Fabric & Cover
- Changing Room with Sundeck
- Chaise Lounge & Forward Lounge Seating with Underseat Storage
- Midship Corner Lounge with Underseat Storage
- Aft Padded Sundeck with Pop-Up Changing Room
- Helm Seat with Flip-Up Bolster
- Sea Grass Vinyl Flooring
- Backlit Instrument Panel with Radio, Tach, Speedo, Voltmeter, 12 Volt Accessory Plug & USB Port
- Waterproof Stereo with Speakers
- Four Stainless Steel Mooring Cleats
- LED Interior Courtesy Lighting
- LED Docking & Navigation Lights
- Rear Boarding Ladder
- Zinc Anode
- 17 Gallon Fuel Tank
- 70HP Standard Motor

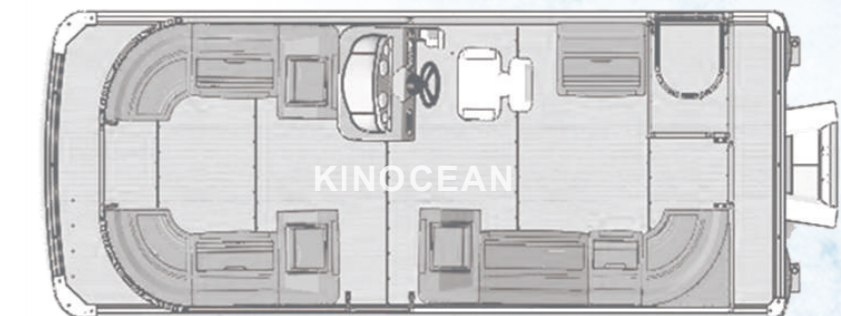


# 22ft PONTOON BOAT



## STANDARD FEATURES

- 25" Diameter Multi-chambered Pontoon Logs
- Extruded Anodized Aluminum Deck Trim
- Elevated Fence Panels for Drainage & Ventilation
- 1.25 Heavy Duty Anodized Railings & Bimini Frames
- UV Treated 8' Bimini Fabric & Cover
- Changing Room with Sundeck
- Chaise Lounge & Forward Lounge Seating with Underseat Storage
- Midship Corner Lounge with Underseat Storage
- Aft Padded Sundeck with Pop-Up Changing Room
- Helm Seat with Flip-Up Bolster
- Sea Grass Vinyl Flooring
- Backlit Instrument Panel with Radio, Tach, Speedo, Voltmeter, 12 Volt Accessory Plug & USB Port
- Waterproof Stereo with Speakers
- Four Stainless Steel Mooring Cleats
- LED Interior Courtesy Lighting
- LED Docking & Navigation Lights
- Rear Boarding Ladder
- Zinc Anode
- 17 Gallon Fuel Tank

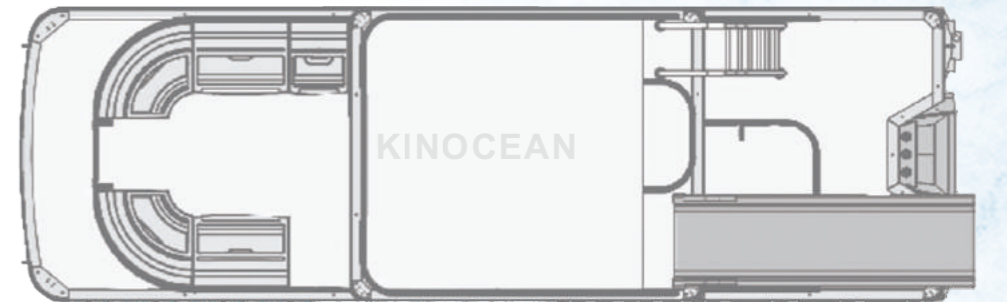


# DOUBLE DECKER PONTOON BOAT



## STANDARD FEATURES

- 25" Diameter Multi-chambered Pontoon Logs
- Extruded Anodized Aluminum Deck Trim
- Elevated Fence Panels for Drainage & Ventilation
- 1.25 Heavy Duty Anodized Railings & Bimini Frames
- UV Treated 8' Bimini Fabric & Cover
- Changing Room with Sundeck
- Chaise Lounge & Forward Lounge Seating with Underseat Storage
- Midship Corner Lounge with Underseat Storage
- Aft Padded Sundeck with Pop-Up Changing Room
- Helm Seat with Flip-Up Bolster
- Sea Grass Vinyl Flooring
- Backlit Instrument Panel with Radio, Tach, Speedo, Voltmeter,
- 12 Volt Accessory Plug & USB Port
- Waterproof Stereo with Speakers
- Four Stainless Steel Mooring Cleats
- LED Interior Courtesy Lighting
- LED Docking & Navigation Lights
- Rear Boarding Ladder
- Zinc Anode
- 17 Gallon Fuel Tank
- Upper Deck
- Slide

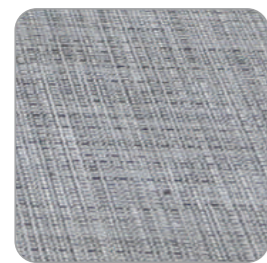


# COLOR OPTIONS

## CARPET



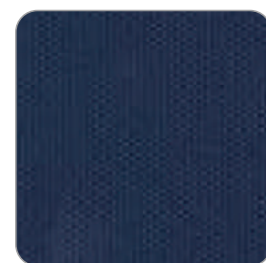
Beige



Grey



## AWNING



Navy Blue



Beige



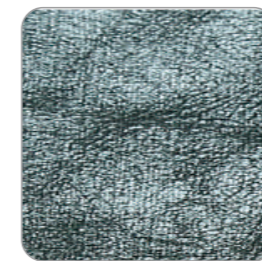
## SOFA



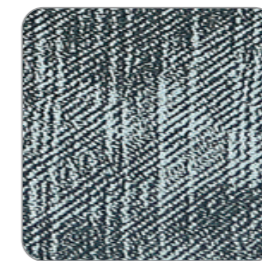
Grey-1



Grey-2



Grey-3



Grey-4



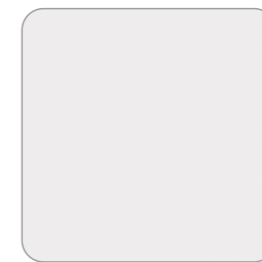
Black



Dark Yellow



Beige



White



## FENCE



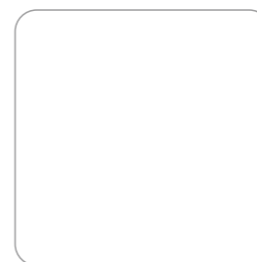
Red



Dark Grey



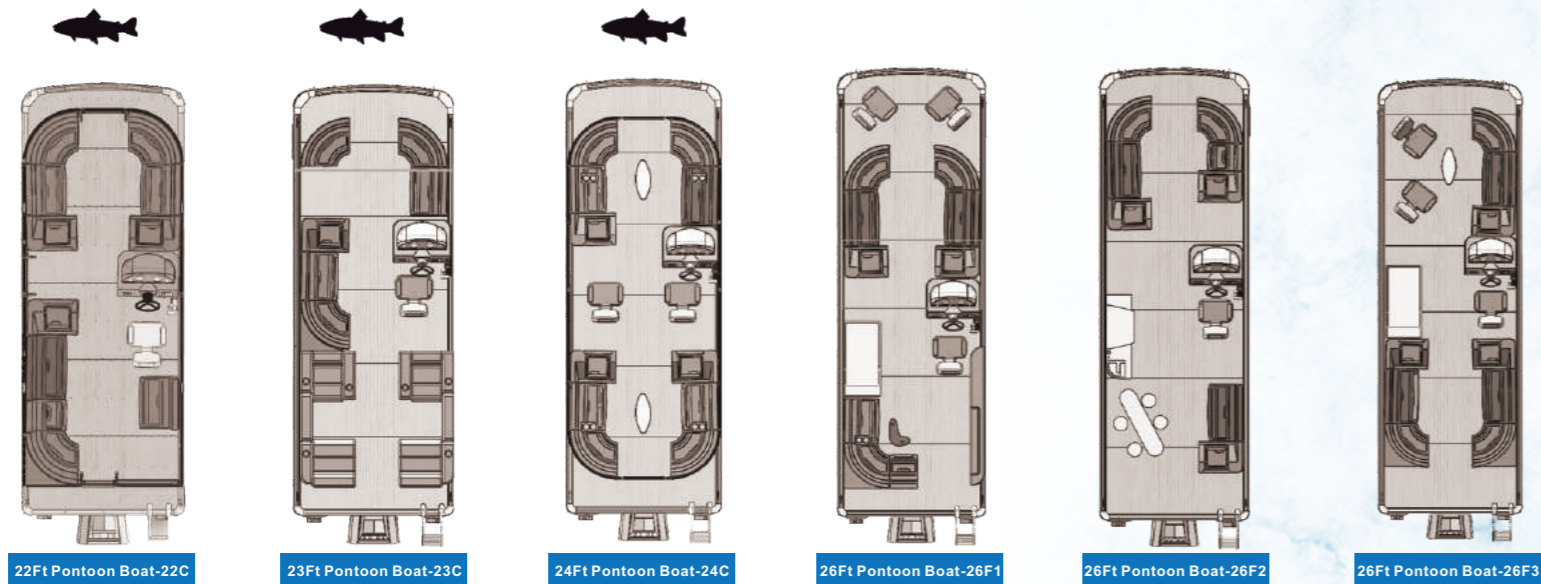
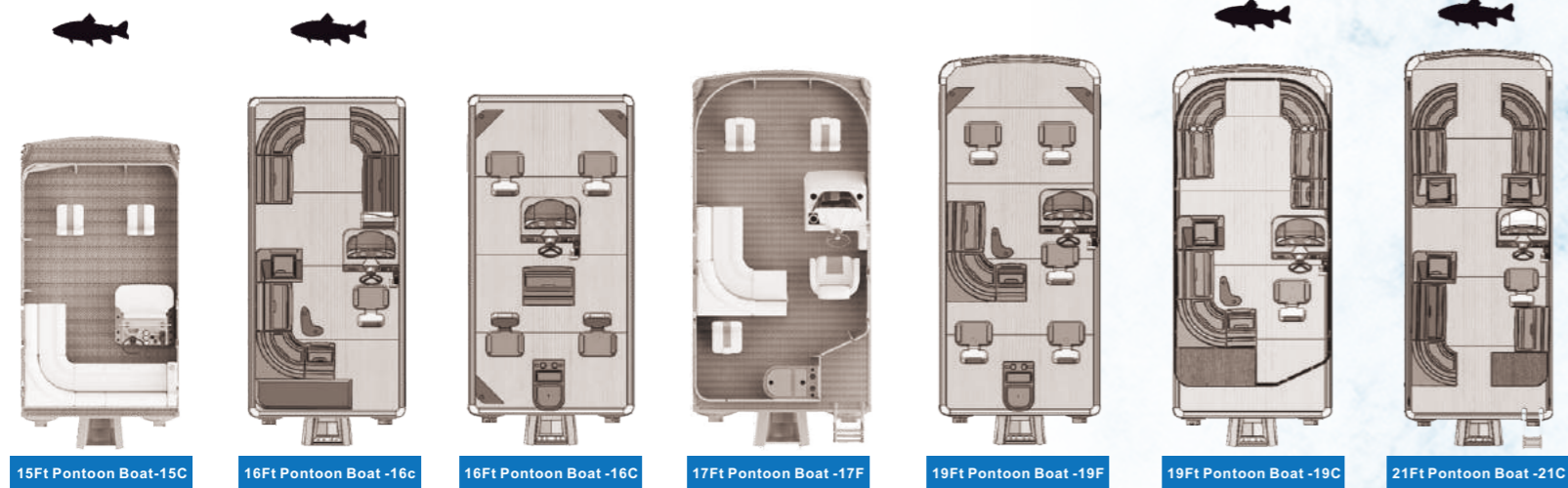
Blue



White



# LAYOUTS



--	--	--	--

Length of the deck: 4.6m≈15ft	Number of loads: 4+1	Fuel type: Gasoline	Match horsepower: 60~90HP
Width of the boat: 2.47m≈8ft1in		Fuel tank capacity: 60L	Engine: Outboard machine
Full length of the boat: 5m≈16ft4in			
Length of the pontoon: 4.6m≈15ft			
The diameter of the pontoon: 0.63m≈2ft1in			



Length of the deck: 5.8m≈19ft	Number of loads: 9+1	Fuel type: Gasoline	Match horsepower: 60~90HP
Width of the boat: 2.47m≈8ft1in		Fuel tank capacity: 90L	Engine: Outboard machine
Full length of the boat: 5.8m≈19ft4in			
Length of the pontoon: 5.8m≈19ft			
The diameter of the pontoon: 0.63m≈2ft1in			

Length of the deck: 6.7m≈22ft	Number of loads: 10+1	Fuel type: Gasoline	Match horsepower: 60~90HP
Width of the boat: 2.47m≈8ft1in		Fuel tank capacity: 90L	Engine: Outboard machine
Full length of the boat: 5.8m≈19ft4in			
Length of the pontoon: 6.7m≈22ft			
The diameter of the pontoon: 0.63m≈2ft1in			

Length of the deck: 7.3m≈24ft	Number of loads: 11+1	Fuel type: Gasoline	Match horsepower: 60~90HP
Width of the boat: 2.47m≈8ft1in		Fuel tank capacity: 90L	Engine: Outboard machine
Full length of the boat: 7.7m≈25ft4in			
Length of the pontoon: 7.3m≈24ft			
The diameter of the pontoon: 0.63m≈2ft1in			



Length of the deck: 7.93m≈26ft	Number of loads: 11+1	Fuel type: Gasoline	Match horsepower: 90~150HP
Width of the boat: 2.47m≈8ft1in		Fuel tank capacity: 90L	Engine: Outboard machine
Full length of the boat: 8.33m≈27ft4in			
Length of the pontoon: 7.93m≈26ft			
The diameter of the pontoon: 0.63m≈2ft1in			



# LIGHTING SYSTEM



The best gatherings always have a hub. That's exactly what the pontoon boat provides, a place for friends and family to get together and take on the day. More than a great pontoon, our product is a floating entertainment center that brings people together, letting everyone be as active — or relaxed — as they want to be. We offer custom service, different size are available.



# OPTIONS & ACCESSORIES



## OPTIONS & ACCESSORIES

- A Stainless steel ladder
- B Additional flip storage on sofa
- C Changing room
- D Portable cupholder
- E Helm w/stereo and gauges
- F 10' bimini top

## OTHER OPTIONS

- 2-Tube Performance Package (Includes Lifting Strakes, Underskin, Ski Tow & Hydraulic Steering)
- Wheelchair Side Gate
- Carpeted Floor Mat Set (Beige or Gray)
- RGB Lighting
- VSR(Voltage Sensing Relay)





### 400 RACING SERIES

The 400 ROS features the 400R powerhead mounted on an all-new race midsection, featuring the competition proven Mercury Racing heavy-duty swivel clamp bracket assembly. A Sport Master gearcase transfers the 400 ROS'S massive power to the water. And to ensure every revolution counts, Mercury Racing has developed an all-new Line of CNC cleaver propellers specifically for the 400 ROS.

### 175-350HP PRO VERADO

- Verado®'s supercharged system provides worldclass torque.
- Smartcraft® Digital Throttle & Shift(DTS) delivers automotive-like control, instant response and smooth shifting.
- Advanced Mid-section(AMS) eliminates engine related boat vibration 150HP Fourstroke.
- The highest displacement in its class.Works less to produce more torque, delivering the best in performance and efficiency.
- A reliable low-friction valve train and exclusive oil cooler enhances performance and extends the life of the engine.
- Twin balancer shafts and the focused mount system reduces overall vibration, delivering smooth performance.

### 50-150HP FOURSTROKE

- The 2.1-liter block provides optimum performance and best mid-range fuel economy.
- Command Thrust gear case offers superior maneuverability.
- Focused mount design delivers smooth overall operation 40-60HP Command Thrust FourStroke.
- Gear case provides better performance and efficiency.
- Low gear ratio provides superior maneuverability.

### AHIVETRIM

Is an integrated gps, speed-based automatic engine trim system that continually adjusts engine trim based on changes in boat speed to improve performance, fuel economy and ease of operation. It responds to boat maneuvers with precision and delivers a better overall driving experience.



## BIG MOTORS MATTER. THAT'S WHAT DRIVES US.



It starts with reliability, performance and innovation everyone has come to expect from Yamaha Outboards. And that's exactly why so many boaters won't trust anything else on the water. Yamaha Outboards has proudly operated in the U.S. market for nearly 30 years. In that time, their engineers have become known for a relentless pursuit of a more satisfying boating and ownership experience for customers. As a result, Yamaha Outboards have become synonymous with legendary reliability and performance.



Suzuki Marine's experience is backed by a commitment to 4-stroke technology. They offer the most reliable, powerful 4-strokes that are a perfect fit for today's boats. Suzuki Marine boasts of having the industry's largest all-4-stroke lineup!



Evinrude engines have evolved to the point where there's so much science involved that the benefits get lost in the sheer number of advances. That's why today, the popular E-TEC outboards and their advantages are among the most popular on the water.



Honda Marine means quality, reliability, advanced technology, and better fuel efficiency. Honda introduced the first 4-stroke outboard engine in America more than 40 years ago. Today, Honda outboards still deliver best-of-class features.

# ALUMINUM BOAT



**KINOCEAN**  
*Boats*

Kinocean is more than just a “pretty face”. It’s what you don’t see on a Kinocean boat that is the most impressive. Beyond the beautiful exterior lies a durable all welded all aluminium foundation. From the longitudinal rib system which creates an alliance of strength, to the welded in floor that provides a solid one piece unit, each Kinocean is built tough and built to last. Also found on each Kinocean is the latest in hull design.

# FLAT BOTTOM ALUMINUM BOAT



<b>Max person capacity</b>	5 person
<b>Max Loading</b>	600KG
<b>Max HP Capacity</b>	40HP
<b>Ribs</b>	included
<b>Seats</b>	3 seats
<b>Transom Height</b>	500MM
<b>Overall Length</b>	4000M

<b>Material thickness</b>	2-3MM Alum
<b>Weight</b>	120KG
<b>Hull weight</b>	500MM
<b>Bottom width</b>	1700MM
<b>Fuel capacity</b>	Portable

# ALUMINUM FISHING BOAT



<b>Max person capacity</b>	1-6 person
<b>Max Loading</b>	400-1500KG
<b>Max HP Capacity</b>	20-60HP
<b>Ribs</b>	included
<b>Seats</b>	portable
<b>Transom Height</b>	500-700MM
<b>Overall Length</b>	3000-5200MM

<b>Material thickness</b>	1.5-3.0MM
<b>Weight</b>	45-200KG
<b>Hull weight</b>	500-700MM
<b>Bottom width</b>	1200-1800MM
<b>Fuel capacity</b>	portable

# ALUMINUM BOAT (2.8m)



Length	2820MM
Height	495KG
Weight	60HP
Width	1200MM
Seats	3 seats

Engine	10-20HP
Thickness	2.0MM
Loading Person	4 Person
Loading capacity	340+(30-50)

# ALUMINUM BOAT (4.8m)



<b>Length</b>	4800MM
<b>Height</b>	716KG
<b>Weight</b>	158HP
<b>Width</b>	1805MM
<b>Seats</b>	3 seats

<b>Engine</b>	30-60HP
<b>Thickness</b>	2.0MM
<b>Loading Person</b>	7 Person
<b>Loading capacity</b>	600+(30-50)