

Tire Pressure Monitoring System



Thank you for purchasing our tire pressure monitor, which is designed to provide you with more levels of protection while driving.

It will warn you in advance with the tire condition of your car . After installing TPMS, the system can monitor the tire pressure and real-time temperature. If abnormal tire pressure and temperature are detected, the system will emit a real-time warning sound and light up a flashing icon on the screen to notify the driver.

Not only real-time reminders can also deal with the problem of avoiding traffic accidents in time, but also can ensure the safety of drivers and passengers.

TPMS Monitors

Solar TPMS



C260



C200



C220



C240



C241



C261

Cigarette lighter TPMS



C100



C110

USB TPMS



C120

TPMS Sensors

External Sensors



Replaceable battery

Small Internal Sensors



Non-replaceable battery

Big Internal Sensors



Replaceable battery

TPMS Specification



External packaging



Internal packaging



C120 packaging

C260 Technical Parameter

C260 Technical parameter (Solar TPMS)

C260 Technical parameter (Solar TPMS)				
The host parameter	Material	PC	Solar panels	Monocrystalline silicon frosting
	Chip	Infineon of Germany	Display	Pressure. Temperature. Leakage alarm
	Modulation	ASK	Frequency	433.92MHz±20.00MHz
	Operating temperature	"-20°C~80°C "	Storage temperature	"-30°C~85°C"
	Charging method	USB+Solar	Lithium battery	320mAh
	Charging voltage	DC 5V	Factory default high and low pressure values	3.0Bar-2.0Bar
	Working current	≤ 5MA	Factory default temperature value	68°C
	Size	9.2*2.7*3.4cm	Weight	65g
	Installation location	Center console, windshield	Advantage	The first adjustable screen Angle in China
Sensor parameters	Material	Nylon plus fiber/copper nozzle	IPXX	IP67
	Chip	Infineon of Germany	Frequency	433.92MHz±20.00MHz
	Sensor pressure range	0-3.5BAR	Storage temperature	"-30°C~86°C"
	Pressure accuracy	" +/-0.1Bar"	Temperature accuracy	" +/-3°C "
	External working temperature	"-20°C~80°C"	Internal working temperature	-40°C~+120°C
	External sensor size	1.9.*1.9*1.5cm	Small and large internal sensor size	5.5*1*7.2cm (6.4*1.1*8CM)
	External sensor weight	12g	Small and large internal sensor weight	38g (47g)
	External battery	CR1632	Internal battery	CR2050
Outer packing parameters	External color box size	13.5*13.5*4.6cm	Internal color box size	20.5*13.8*5.2cm
	External gross weight	200g	Small and large internal gross weight	297g (333g)
	Qty	60 sets	Qty	44 sets
	Carton	55*43*27cm	Packing list	Host *1, sensor *4, instruction *1



C240 Technical Parameter

C240 Technical parameter (Solar TPMS)				
The host parameter	Material	ABS	Solar panels	polysilicon
	Chip	Infineon of Germany	Display	Pressure. Temperature. Leakage alarm
	Modulation	ASK	Frequency	433.92MHz±20.00MHz
	Operating temperature	"-20°C~80°C "	Storage temperature	"-30°C~85°C"
	Charging method	USB+Solar	Lithium battery	280mAh
	Charging voltage	DC 5V	Factory default high and low pressure values	3.0Bar-2.0Bar
	Working current	≤ 5MA	Factory default temperature value	68°C
	Size	9.3*7.5*2.4cm	Weight	64g
	Installation location	Instrument panel	Advantage	Adequate inventory to meet e-commerce delivery requirements
Sensor parameters	Material	Nylon plus fiber/copper nozzle	IPXX	IP67
	Chip	Infineon of Germany	Frequency	433.92MHz±20.00MHz
	Sensor pressure range	0-3.5BAR	Storage temperature	"-30°C~86°C"
	Pressure accuracy	"±0.1Bar"	Temperature accuracy	"±-3°C "
	External working temperature	"-20°C~80°C"	Internal working temperature	-40°C~+120°C
	External sensor size	1.9.*1.9*1.5cm	Small and large internal sensor size	5.5*1*7.2cm (6.4*1.1*8CM)
	External sensor weight	12g	Small and large internal sensor weight	38g (47g)
	External battery	CR1632	Internal battery	CR2050
Outer packing parameters	External color box size	13.5*13.5*4.6cm	Internal color box size	20.5*13.8*5.2cm
	External gross weight	199g	Small and large internal gross weight	295g (331g)
	Qty	60sets	Qty	44sets
	Carton	55*43*27cm	Packing list	Host *1, sensor *4, instruction *1



C200 Technical Parameter

C200 Technical parameter (Solar TPMS)				
The host parameter	Material	PC	Solar panels	Monocrystalline silicon frosting
	Chip	Infineon of Germany	Display	Pressure. Temperature. Leakage alarm
	Modulation	ASK	Frequency	433.92MHz±20.00MHz
	Operating temperature	"-20°C~80°C "	Storage temperature	"-30°C~85°C"
	Charging method	USB+Solar	Lithium battery	500mAh
	Charging voltage	DC 5V	Factory default high and low pressure values	3.0Bar-2.0Bar
	Working current	≤ 5MA	Factory default temperature value	68°C
	Size	11*8.1*2.5cm	Weight	98g
	Installation location	Instrument panel	Advantage	Replaceable host lithium battery
Sensor parameters	Material	Nylon plus fiber/copper nozzle	IPXX	IP67
	Chip	Infineon of Germany	Frequency	433.92MHz±20.00MHz
	Sensor pressure range	0-3.5BAR	Storage temperature	"-30°C~86°C"
	Pressure accuracy	"±0.1Bar"	Temperature accuracy	"±0.3°C "
	External working temperature	"-20°C~80°C"	Internal working temperature	-40°C~+120°C
	External sensor size	1.9.*1.9*1.5cm	Small and large internal sensor size	5.5*1*7.2cm (6.4*1.1*8CM)
	External sensor weight	12g	Small and large internal sensor weight	38g (47g)
	External battery	CR1632	Internal battery	CR2050
Outer packing parameters	External color box size	13.5*13.5*4.6cm	Internal color box size	20.5*13.8*5.2cm
	External gross weight	233g	Small and large internal gross weight	330g (366g)
	Qty	60sets	Qty	44sets
	Carton	55*43*27cm	Packing list	Host *1, sensor *4, instruction *1



C261 Technical Parameter

C261 Technical parameter (Solar TPMS)				
The host parameter	Material	ABS	Solar panels	polysilicon
	Chip	Infineon of Germany	Display	Pressure. Temperature. Leakage alarm
	Modulation	ASK	Frequency	433.92MHz±20.00MHz
	Operating temperature	"-20°C~80°C "	Storage temperature	"-30°C~85°C"
	Charging method	USB+Solar	Lithium battery	280mAh
	Charging voltage	DC 5V	Factory default high and low pressure values	3.0Bar-2.0Bar
	Working current	≤ 5MA	Factory default temperature value	68°C
	Size	9.2*4*2.1cm	Weight	53g
	Installation location	Center console, windshield	Advantage	Adequate inventory to meet e-commerce delivery requirements
Sensor parameters	Material	Nylon plus fiber/copper nozzle	IPXX	IP67
	Chip	Infineon of Germany	Frequency	433.92MHz±20.00MHz
	Sensor pressure range	0-3.5BAR	Storage temperature	"-30°C~86°C"
	Pressure accuracy	"±0.1Bar"	Temperature accuracy	"±3°C "
	External working temperature	"-20°C~80°C"	Internal working temperature	-40°C~+120°C
	External sensor size	1.9.*1.9*1.5cm	Small and large internal sensor size	5.5*1*7.2cm (6.4*1.1*8CM)
	External sensor weight	12g	Small and large internal sensor weight	38g (47g)
	External battery	CR1632	Internal battery	CR2050
Outer packing parameters	External color box size	13.5*13.5*4.6cm	Internal color box size	20.5*13.8*5.2cm
	External gross weight	188g	Small and large internal gross weight	285g (321g)
	Qty	60sets	Qty	44sets
	Carton	55*43*27cm	Packing list	Host *1, sensor *4, instruction *1



C220 Technical Parameter

C220 Technical parameter (Solar TPMS)				
The host parameter	Material	PC	Solar panels	Monocrystalline silicon frosting
	Chip	Infineon of Germany	Display	Pressure. Temperature. Leakage alarm
	Modulation	ASK	Frequency	433.92MHz±20.00MHz
	Operating temperature	"-20°C~80°C "	Storage temperature	"-30°C~85°C"
	Charging method	USB+太阳能	Lithium battery	500mAh
	Charging voltage	DC 5V	Factory default high and low pressure values	3.0Bar-2.0Bar
	Working current	≤ 5MA	Factory default temperature value	68°C
	Size	9.9*7.8*2.6cm	Weight	110g
	Installation location	Instrument panel	Advantage	Large capacity, delicate appearance, rainy days without worry
Sensor parameters	Material	Nylon plus fiber/copper nozzle	IPXX	IP67
	Chip	Infineon of Germany	Frequency	433.92MHz±20.00MHz
	Sensor pressure range	0-3.5BAR	Storage temperature	"-30°C~86°C"
	Pressure accuracy	"±0.1Bar"	Temperature accuracy	"±3°C "
	External working temperature	"-20°C~80°C"	Internal working temperature	-40°C~+120°C
	External sensor size	1.9.*1.9*1.5cm	Small and large internal sensor size	5.5*1*7.2cm (6.4*1.1*8CM)
	External sensor weight	12g	Small and large internal sensor weight	38g (47g)
	External battery	CR1632	Internal battery	CR2050
Outer packing parameters	External color box size	13.5*13.5*4.6cm	Internal color box size	20.5*13.8*5.2cm
	External gross weight	245g	Small and large internal gross weight	342g(378g)
	Qty	60sets	Qty	44sets
	Carton	55*43*27cm	Packing list	Host *1, sensor *4, instruction *1



C241 Technical parameter

C241 Technical parameter (Solar TPMS)				
The host parameter	Material	ABS	Solar panels	polysilicon
	Chip	Infineon of Germany	Display	Pressure. Temperature. Leakage alarm
	Modulation	ASK	Frequency	433.92MHz±20.00MHz
	Operating temperature	"-20°C~80°C "	Storage temperature	"-30°C~85°C"
	Charging method	USB+Solar	Lithium battery	280mAh
	Charging voltage	DC 5V	Factory default high and low pressure values	3.0Bar-2.0Bar
	Working current	≤ 5MA	Factory default temperature value	68°C
	Size	9.4*5.6*2.1cm	Weight	65g
	Installation location	Instrument panel	Advantage	Adequate inventory to meet e-commerce delivery requirements
Sensor parameters	Material	Nylon plus fiber/copper nozzle	IPXX	IP67
	Chip	Infineon of Germany	Frequency	433.92MHz±20.00MHz
	Sensor pressure range	0-3.5BAR	Storage temperature	"-30°C~86°C"
	Pressure accuracy	"±0.1Bar"	Temperature accuracy	"±0.3°C "
	External working temperature	"-20°C~80°C"	Internal working temperature	-40°C~+120°C
	External sensor size	1.9.*1.9*1.5cm	Small and large internal sensor size	5.5*1*7.2cm (6.4*1.1*8CM)
	External sensor weight	12g	Small and large internal sensor weight	38g (47g)
	External battery	CR1632	Internal battery	CR2050
Outer packing parameters	External color box size	13.5*13.5*4.6cm	Internal color box size	20.5*13.8*5.2cm
	External gross weight	200g	Small and large internal gross weight	297g(333g)
	Qty	60sets	Qty	44sets
	Carton	55*43*27cm	Packing list	Host *1, sensor *4, instruction *1



Setup steps (C200 C220 C240 C260 C261 C241)



01、

Power on: long press right button for 3 seconds
Power off: Long press right button for 3 seconds



02、

Enter the setting mode: long press the middle button for 4 seconds and enter the setting mode after hearing the bi sound. Short press the middle button and then press the left and right buttons to select the pressure unit, temperature unit, upper limit, lower limit and upper limit to be set



03、

Pressure unit setting: Select the pressure unit, press the "Select" button to rotate the pressure unit BAR or PSI, and then press the "intermediate" button to confirm saving
Pressure setting: select the upper or lower pressure, press the left and right selection button to add or subtract the pressure value, then press the setting button to confirm saving



04、

Tire pressure pairing: press left 8 to release the tire after hearing BI and enter the pairing mode. The "--" icon of the left front wheel flashes. Press left or right button to select the tire that needs to be matched



05、

At this point, short press left button or right button to switch to the next tire position to continue matching, and follow the above steps for other tire matching. After matching, long press set button for 3 seconds and save and exit after bi sound (enter the tire matching state without any action, and automatically exit the code matching mode after 3 minutes).

Note:

- 1: The factory factory mode is set by default, high pressure is 3.0bar, low pressure is 2.0bar, temperature is 70C, restore the factory setting and press left and right keys
- 2: There must be a change in air pressure when pairing!!
- 3: Can carry on the tire exchange mode: press the middle key 8 to enter the tire exchange mode

Pairing steps (C200 C220 C240 C260 C261 C241)



Step 1: Short press the left button 8 times to enter the pairing mode



Step 3: Install the sensor, if there is data display, it means the pairing is successful.



Step 2: When pairing, the corresponding tire will flash. Because there will be a spare tire, so when pairing, you must pay attention to whether the cursor position corresponds to the flashing tire position.



Step 4: After pairing a tire successfully, press the left or right button to select the next tire to be paired, until the four tires, the front, rear, left, and right, have data displayed, then the pairing is complete. Long press the middle button to exit the pairing mode and complete the pairing .

C100 Technical Parameter

C100 Technical parameter (Cigarette lighter TPMS)

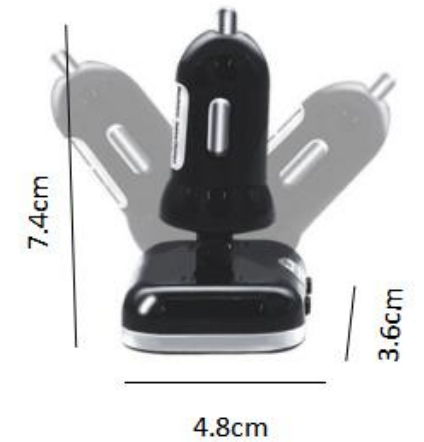
C100 Technical parameter (Cigarette lighter TPMS)				
The host parameter	Material	PC	Screen	LCD
	Chip	Infineon of Germany	According to	Pressure. Temperature. Leakage alarm
	Modulation	ASK	Frequency	433.92MHz±20.00MHz
	Operating temperature	"-20°C~80°C "	Storage temperature	"-30°C~85°C"
	Charging method	Cigarette lighter	Factory default high pressure values	3.0Bar
	Charging voltage	DC 5V	Factory default low pressure values	2.0Bar
	Working current	≤ 5MA	Factory default temperature value	68°C
	Size	4.8*3.4*7.5cm	Weight	39g
	Installation location	Cigarette lighter	Advantage	Small, easy to export
Sensor parameters	Material	Nylon plus fiber/copper nozzle	IPXX	IP67
	Chip	Infineon of Germany	Frequency	433.92MHz±20.00MHz
	Sensor pressure range	0-3.5BAR	Storage temperature	"-30°C~86°C"
	Pressure accuracy	"±0.1Bar"	Temperature accuracy	"±3°C "
	External working temperature	"-20°C~80°C"	Internal working temperature	-40°C~+120°C
	External sensor size	1.9.*1.9*1.5cm	Small and large internal sensor size	5.5*1*7.2cm (6.4*1.1*8CM)
	External sensor size	12g	Small and large internal sensor weight	38g (47g)
	External battery	CR1632	Internal battery	CR2050
Outer packing parameters	External color box size	13.5*13.5*5.0cm	Internal color box size	20.5*13.8*5.2cm
	External gross weight	174g	Small and large internal gross weight	271g (307g)
	Qty	60sets	Qty	44sets
	Carton	55*43*27cm	Packing list	Host *1, sensor *4, instruction *1



C110 Technical Parameter

C110 Technical parameter (Cigarette lighter TPMS)

C110 Technical parameter (Cigarette lighter TPMS)				
The host parameter	Material	PC	Screen	LCD
	Chip	Infineon of Germany	According to	Pressure. Temperature. Leakage alarm
	Modulation	ASK	Frequency	433.92MHz±20.00MHz
	Operating temperature	"-20°C~80°C "	Storage temperature	"-30°C~85°C"
	Charging method	Cigarette lighter	Factory default high pressure values	3.0Bar
	Charging voltage	DC 5V	Factory default low pressure values	2.0Bar
	Working current	≤ 5MA	Factory default temperature value	68°C
	Size	4.8*3.6*7.4cm	Weight	43g
	Installation location	Cigarette lighter	Advantage	Adjustable brightness, with head swing function
Sensor parameters	Material	Nylon plus fiber/copper nozzle	IPXX	IP67
	Chip	Infineon of Germany	Frequency	433.92MHz±20.00MHz
	Sensor pressure range	0-3.5BAR	Storage temperature	"-30°C~86°C"
	Pressure accuracy	"±0.1Bar"	Temperature accuracy	"±3°C "
	External working temperature	"-20°C~80°C"	Internal working temperature	-40°C~+120°C
	External sensor size	1.9.*1.9*1.5cm	Small and large internal sensor size	5.5*1*7.2cm (6.4*1.1*8CM)
	External sensor size	12g	Small and large internal sensor weight	38g (47g)
	External battery	CR1632	Internal battery	CR2050
Outer packing parameters	External color box size	13.5*13.5*5.0cm	Internal color box size	20.5*13.8*5.2cm
	External gross weight	178	Small and large internal gross weight	275g (311g)
	Qty	60sets	Qty	44sets
	Carton	55*43*27cm	Packing list	Host *1, sensor *4, instruction *1



C120 Technical Parameter

C120 Technical parameter (USB TPMS)				
The host parameter	Material	PC	Screen	LCD
	Chip	Infineon of Germany	According to	Pressure. Temperature. Leakage alarm
	Modulation	ASK	Frequency	433.92MHz±20.00MHz
	Operating temperature	"-20°C~80°C "	Storage temperature	"-30°C~85°C"
	Charging method	USB	Factory default high pressure values	3.0Bar
	Charging voltage	DC 5V	Factory default low pressure values	2.0Bar
	Working current	≤ 5MA	Factory default temperature value	68°C
	Size	4.9*3*5cm	Weight	38g
	Installation location	Instrument panel	Advantage	Adjustable brightness, with head swing function, compact
Sensor parameters	Material	Nylon plus fiber/copper nozzle	IPXX	IP67
	Chip	Infineon of Germany	Frequency	433.92MHz±20.00MHz
	Sensor pressure range	0-3.5BAR	Storage temperature	"-30°C~86°C"
	Pressure accuracy	"±0.1Bar"	Temperature accuracy	"±3°C "
	External working temperature	"-20°C~80°C"	External sensor weight	12g
	External sensor size	1.9.*1.9*1.5cm	External battery	CR1632
Outer packing parameters	External color box size	13.4*10.5*3.5cm	External gross weight	160g
	Carton	55*43*27cm	Qty	120Sets
	Packing list	Host *1, sensor *4, instruction *1	note	Carry-out only



操作步驟 (C120 C100 C110)

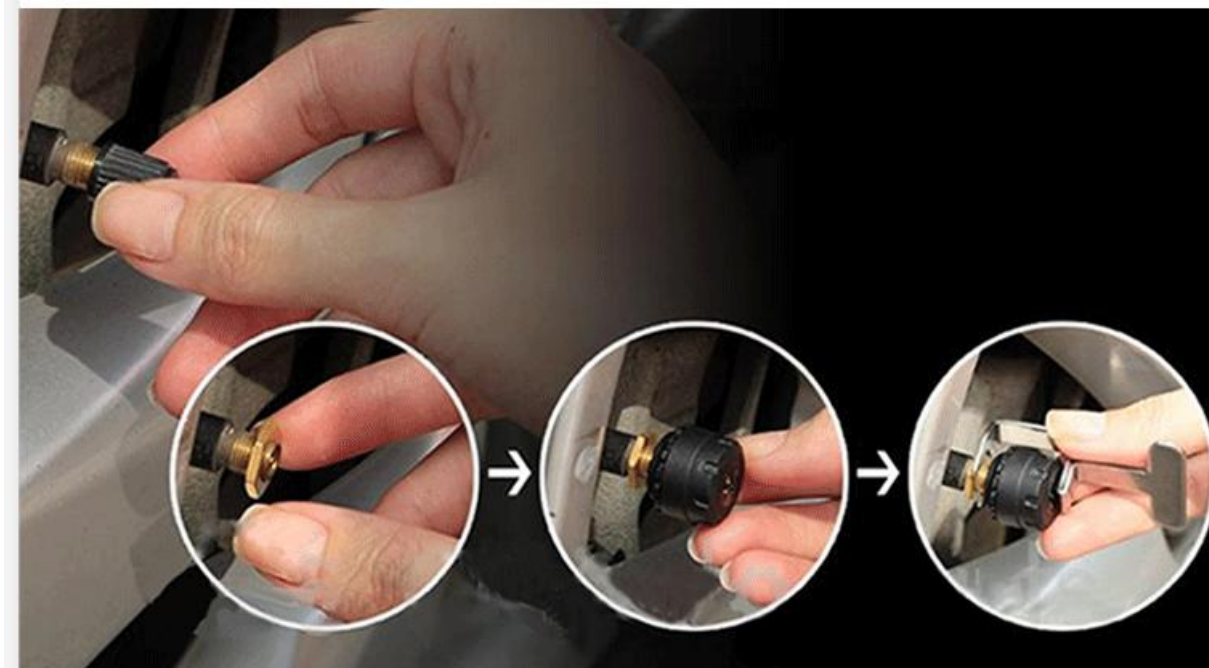
Two buttons, different setting modes

1. Power on: Turn on when power on
2. Power off: Turn off when power off
3. Enter the setting mode: long press the left button to enter the setting mode
4. Press the left button 8 times quickly: enter the tire swap mode
4. Pairing mode: Long press the right button to enter the pairing mode
5. Restore factory settings mode: long press the left and right buttons

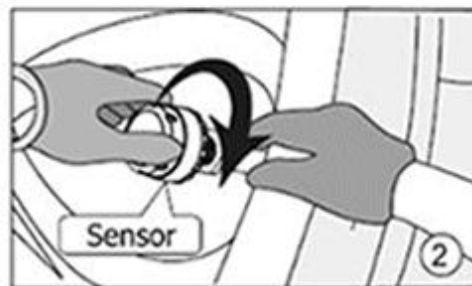


External sensor installation steps

External sensor can be installed by yourself



Install the anti-thief screw onto the tire valve



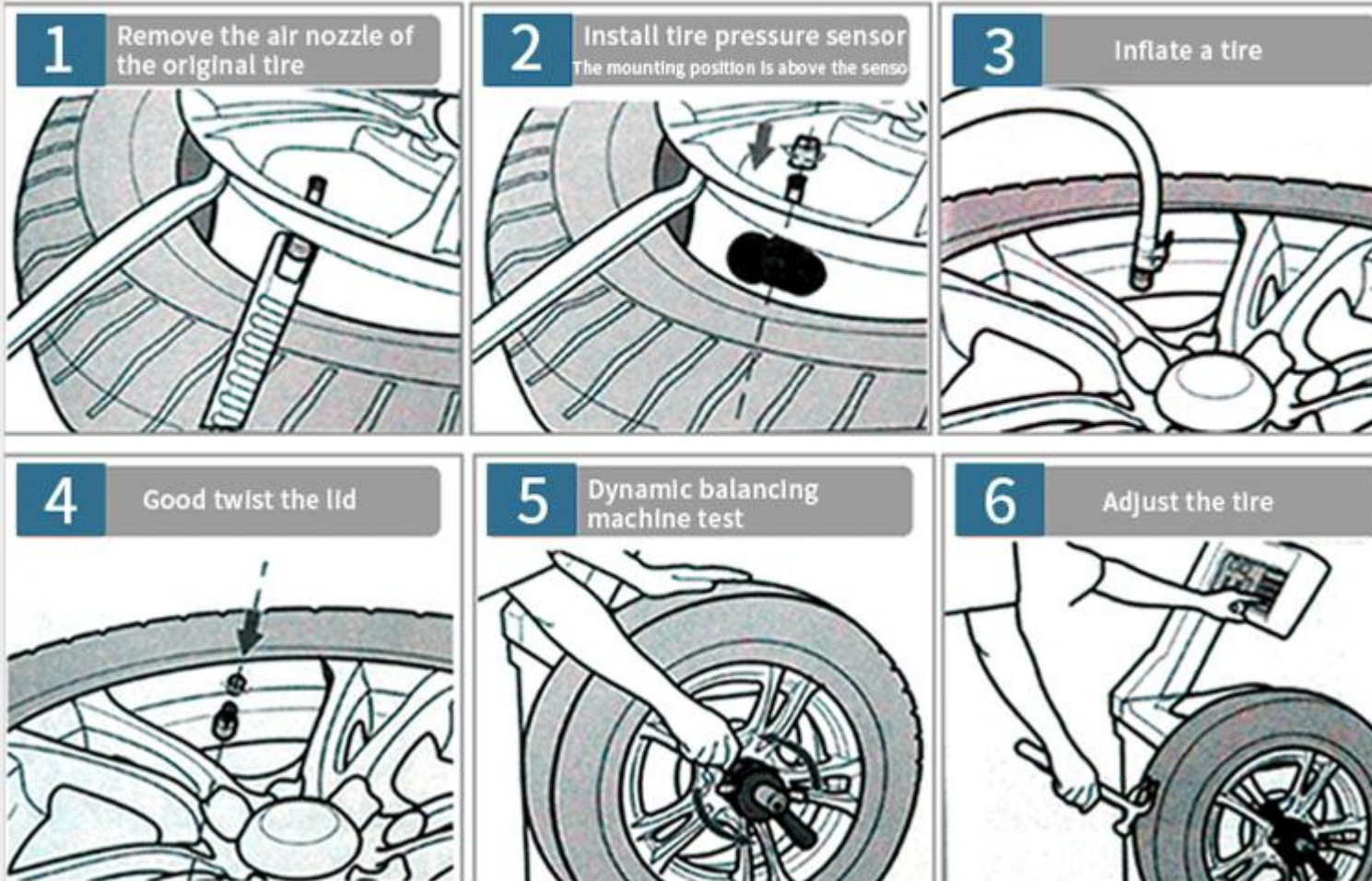
Install the sensor onto the tire valve



Screw the anti-thief screw anti-clockwise until the screw is tightened with the sensor

Internal sensor installation steps

Built-in sensor installation



1. The internal sensor has a replaceable battery and a non-replaceable battery

2. The internal sensor only has an antenna frame. Because our tire rims are iron, they will shield the signal, so add an antenna frame to strengthen the signal.

3. The internal sensor needs to be installed in the auto repair shop.

Function

INSUFFICIENT TIRE PRESSURE IS HARMFUL



INSUFFICIENT TIRE PRESSURE, TIRE TEMPERATURE OVERHEATING AND TIRE EXPLOSION WILL CAUSED TRAFFIC ACCIDENTS. TO AVOID THE ACCIDENTS, YOU NEED THE TPMS.

PRESSURE
TIRE PRESSURE DETECTION SYSTEM

EXCELLENT IN R&D FOCUS ON QUALITY

RIBOTON TPMS



TIRE PRESSURE
DISPLAY



LEAKING DETECTION



TEMPERATURE
DETECTION



REDUCE WEARING



SOLAR ENERGY



MULTI-DATA DISPLAY



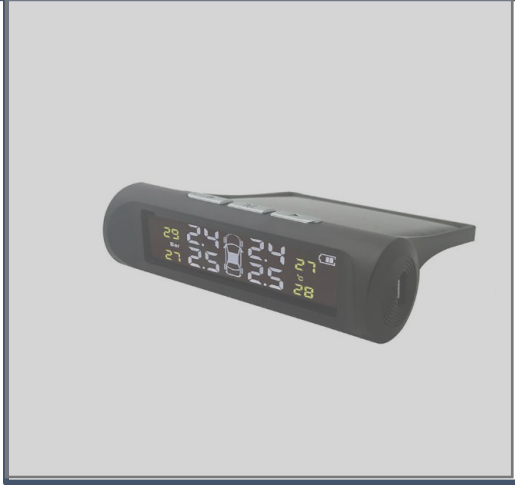
MULTIPLE
PROTECTION



CIRCUIT PROTECTION

Comparing with the market TPMS to improve and optimize

Other chips have poor stability and high bit drop rate

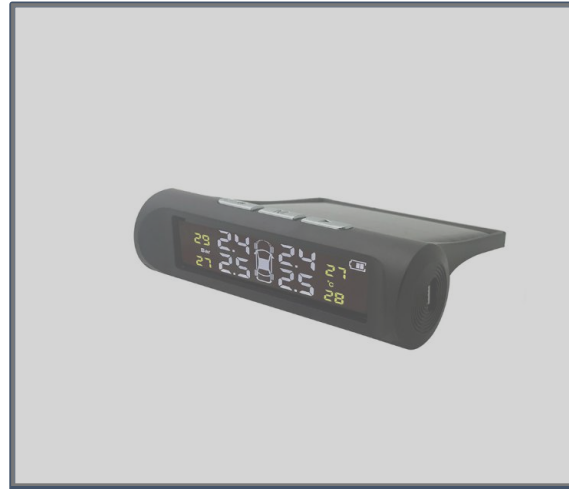


VS



Imported German Infineon chips, one of the giants in the electronics industry, with strong performance and stability

Polysilicon material, cheap, may be white after long-term use



VS



Monocrystalline silicon solar panels are not easy to whiten after long-term use and do not reflect sunlight

PP material, poor heat resistance, easy aging



VS



IP67 rating: waterproof and dust-proof
PC material: shock resistance, compression resistance, high temperature resistance

Notes:

- The receiving distance of the host sensor: 30 meters in an open space, all normal car sizes can be received.
- The product is suitable for cars with tire pressure within 3.5Bar.
- The receiving method of the host sensor is wireless transmission with 433.92MHZ, Not Bluetooth transmission data.
- The machine displays up to 5 tires. Split-screen display. After 8 seconds, the backup wheel data will be displayed.
- Service life of the host: 3-5 years. The host can be used about 30 days after a full charge.
- Pure solar charging time: 10-15 days (note: generally cannot rely solely on solar charging)
- Voice version: It is the voice playback alarm instead of artificial intelligence when alarming, the non-voice standard version is the didi sound alarm.
- Voice model: C120/C100 host can not be made voice model.



Certifications



ROHS



FCC



CE

Delivery time

Order quantity	Delivery time
1-1000PCS	Within 100 : 1 day 500-1000 PCS : 3 days
1000-2000PCS	6 days
3000-5000PCS	10 days
10000PCS or more	20 days

Tips : The above delivery time is estimated time , The actual delivery time shall prevail on the day of the order ;