



广州市百思得酒店用品有限公司

电话: 020-22620111 22620777

传真: 020-22620555

邮箱: besteasy1101@aliyun.com

地址: 广州番禺信基沙溪酒店用品博览城(沙溪区)E86-89

Guangzhou Besteasy Hotel Supplies Co.,Ltd.

TEL: 020-22620111 22620777

FAX: 020-22620555

E-mail: besteasy1101@aliyun.com

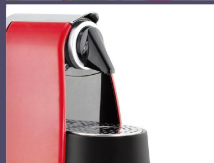
Add: No.E86-89 International cabaret thing  
city Shaxi Panyu Guangzhou

CHOOSE THE BEST  
专注 · 就是专业



[www.besteasy-hotel.com](http://www.besteasy-hotel.com)

BESTEASY HOTEL SUPPLIES PRODUCT CATALOGUE



HOTEL SUPPLIES PRODUCT CATALOGUE

besteasy

有突出的产品和良好的服务才能被认可  
 而对于百思得来说利益不是追求的最终点  
 百思得希望更好地服务于使用者  
 每一个被认可的背后都有一个理念  
 而这一理念被三个要点所影响  
 产品必须精致  
 必须实用  
 并能带给使用者附加值  
 怀着这个理念  
 百思得成功地将酒店客房用品推向了另一个高度

With outstanding products and good service can be recognized  
 For the Besteasys interests have not been the pursuit of the final  
 point  
 Besteasy hope to better service to users  
 Behind every recognized, there is an idea  
 And this concept is affected by three points  
 Product must be fine  
 Must be practical  
 And with the user added value  
 With this idea  
 Besteasy to successfully pushed the hotel guest room supplies  
 to a new  
 experience again and again



# Contents 索引

客房一次性用品 GUEST ROOM DISPOSABLE THING SERIES .....	001-020	雨伞系列 UMBRELLA SERIES .....	116
袋子系列 BAG SERIES .....	021-022	网络连接器系列 NETWORK CONNECTOR SERIES .....	117-118
客房皮制品系列 GUEST ROOM LEATHER PRODUCT SERIES .....	023-040	播放器/数字闹钟系列 MEDIA PLAYERS/DIGITAL CLOCKS SERIES .....	119-120
客房木制品系列 GUEST ROOM WOODEN SERIES .....	041-048	电吹风机系列 HAIR DRYERS SERIES .....	121-123
亚克力制品 ACRYLIC PREMIUMS .....	049-079	电话机系列 HOTEL TELEPHONE SERIES .....	124-130
玻璃制品系列 GLASS PRODUCTS SERIES .....	080-086	密码箱系列 HOTEL SAFES SERIES .....	131-133
卫浴用品系列 BATHROOM SUPPLIES SERIES .....	087-100	小冰箱系列 REFRIGERATOR SERIES .....	134-136
美容镜系列 COSMETIC MIRROR .....	101-102	电水壶系列 ELECTRIC KETTLE SERIES .....	137-142
皂器香机系列 SOAP INCENSE MACHINE SERIES .....	103-104	咖啡机系列 COFFEE MACHINE SERIES .....	143
健康称 BATHROOM SCALE .....	105-106	饮用系列 DRINKING SERIES .....	144-150
客房闹钟 ALARM CLOCK .....	107-108	衣架系列 PLATING HANGER SERIES .....	151-155
手电筒系列 FLASHLIGHT SERIES .....	109	行李架系列 LUGGAGE RACK SERIES .....	156
镜衣系列 IRONING SERIES .....	110-112	毛巾篮系列 TOWEL BASKET SERIES .....	157
防滑垫系列 BATH MAT SERIES .....	113-114	鞋篮系列 SHOE BASKET SERIES .....	158
门牌挂件系列 DOOR SIGN HANGER .....	115	客房桶系列 GUEST ROOM WASTE BIN SERIES .....	159-160





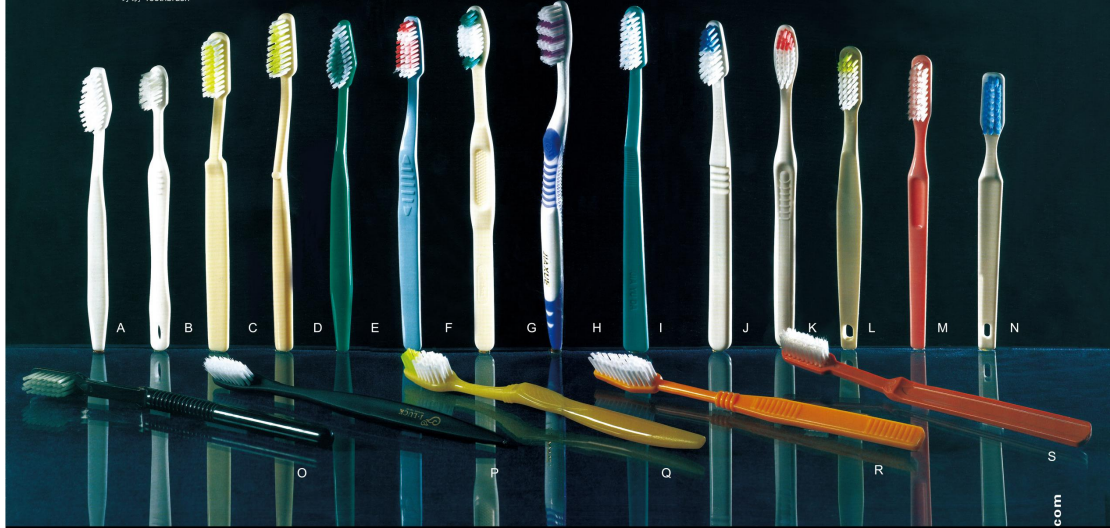
# TOOTHBRUSH

Guests have come to expect them—those little extras that perfect a hotel stay. For some it is the expected standard. For others a delightful convenience that makes life easier!

客人们已经开始期待它们——那些小小的附件品让客人在酒店的下榻体验更加完美。对于有些人，这些预期之中的标准服务；而对另一些人，这些宜人的便利之举让生活变得更加轻松惬意！



B02-1  
牙刷 Toothbrush



B02-2  
牙刷 Toothbrush



B02-3  
牙膏 Toothpaste

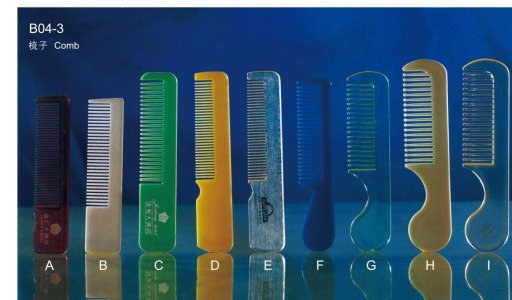
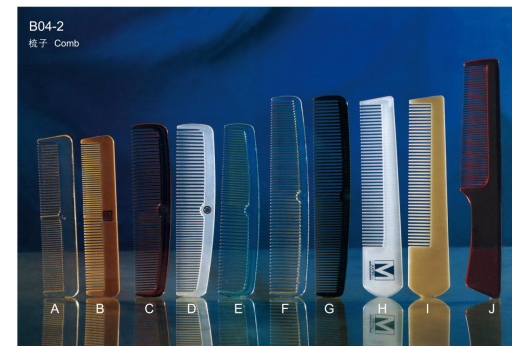
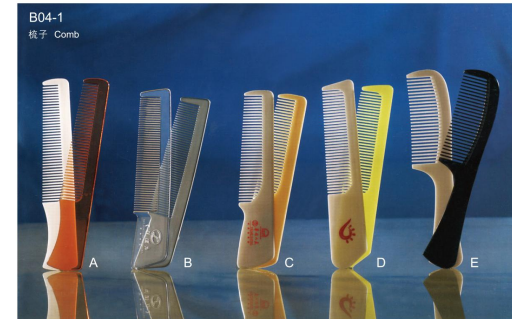




# COMB

All in timeless and unpretentious—and most often a very welcome rescuer: the small, practical helpers no-one can do without. For any need, from head to toe.

所有这些物品都是经典、朴实无华且常常备受欢迎的必需品，小巧且实用的帮手可以满足您从头到脚的每一处所需。





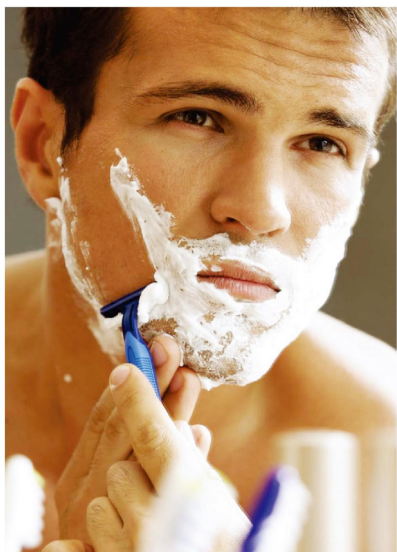


# BATH LIQUID

Hotels are experiencing that today's guests do not merely want to consume. Ethical and ecological values increasingly have become deciding factors. Especially body care products are expected to be safe, both for the skin and the environment. The Green Collection series aptly fulfill these high demands for hotel cosmetics.

正如酒店方面所感受到的，如今的客人需要的不仅仅是消费，道德和生态价值已逐渐成为客人选择酒店的决定性因素，他们尤其期望护肤产品无论对皮肤还是对环境都安全。绿色天然系列应运而生，恰如其分地满足客人对酒店洗浴护理用品的这些更高需求。





# RAZOR

Good blade, comfortable handle,  
simple design,  
transmission is a kind of advocate natural lifestyle  
and the concept of "fun"!

舒畅的刀片、  
舒适的手柄、  
简约的设计、  
传递的是一种崇尚自然生活方式和“生活乐趣”的理  
念!







## SOAP

Do you want to spoil your guests with small special amenities?  
Of course!  
If this includes ecological benefits such as eco-friendly production and recyclable packaging—you can be sure that your guests (and the environment) will be happy!

您想用一些别致的小物品来愉悦客人的心情吗?  
当然!  
如果这些物品还能够产生生态效益, 诸如生态友好型产品, 那么可以肯定的是, 您的客人 (和环境) 将非常高兴!



B10-1  
香皂 Soap  
30g



B10-2  
香皂 Soap  
25g



B10-3  
香皂 Soap  
20g



B10-4  
香皂 Soap  
25g



B10-5  
香皂 Soap  
30g



B10-6  
香皂 Soap  
30g



B10-7  
香皂 Soap  
25g



B10-8  
香皂 Soap  
30g



B10-9  
香皂 Soap  
25g



B10-10  
香皂 Soap  
35g



B10-11  
香皂 Soap  
30g



B10-12  
香皂 Soap  
30g



B10-13  
香皂 Soap  
25g



B10-14  
香皂 Soap  
25g



B10-15  
香皂 Soap  
30g



B10-16  
香皂 Soap  
30g



B10-17  
香皂 Soap  
30g



B10-18  
香皂 Soap  
25g



B10-19  
香皂 Soap  
40g



B10-20  
香皂 Soap  
40g



B10-21  
香皂 Soap  
50g



B10-22  
香皂 Soap  
35g



B10-23  
香皂 Soap  
45g



B10-24  
香皂 Soap  
40g



B10-25  
香皂 Soap  
30g



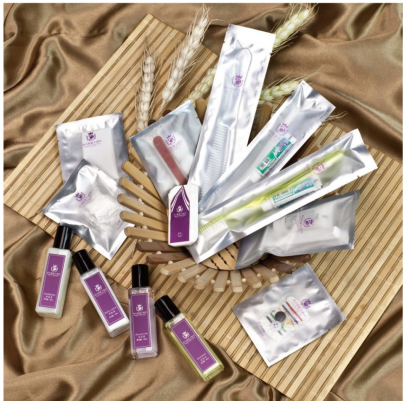
B10-26  
香皂 Soap  
20g



B10-27  
香皂 Soap  
40g



B10-28  
香皂 Soap  
25g



## SHOE TOOLS

This series of products containing many small accessories are carefully designed, the purpose of the cover is complete, can satisfy all kinds of conditions needed, perfect in every tiny point.

该系列产品包含的众多小配件均经过精心设计，涵盖的用途完备，满足各种各样的情况所需，完美体现在每一个细微之处。



B12-2  
亮鞋擦 Shoe brush



B12-3  
亮鞋擦 Shoe brush



B12-4  
亮鞋擦 Shoe brush



B12-5  
亮鞋擦 Shoe brush



B12-6  
亮鞋擦 Shoe brush



B12-7  
亮鞋擦 Shoe brush



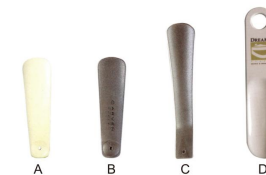
B12-8  
亮鞋擦 Shoe brush



B12-9  
亮鞋擦 Shoe brush



B12-10  
鞋拔 Horn

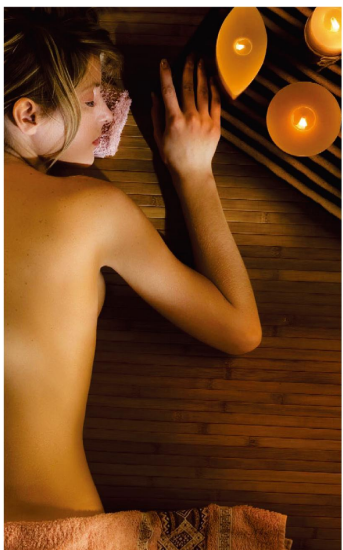


B12-11  
鞋拔 Horn



B12-12  
擦鞋布 Shoeshine cloth





# WASH BATH THINGS

Handy, clear-cut, modern and extremely useful:  
the little extras ranging from shower cap to nail file.  
Also available for smaller budgets.

造型鲜明、设计现代、使用便捷、用途极强；  
这些小物品涵盖从浴帽到指甲锉等诸多种类，  
还可根据不同的酒店预算供应。



B14-1  
舒缓按摩垫  
Wellness massage pad



B14-2  
舒缓按摩垫  
Wellness massage pad



B14-3  
舒缓按摩垫  
Wellness massage pad



B14-4  
舒缓按摩垫  
Wellness massage pad



B14-5  
舒缓按摩垫  
Wellness massage pad



B14-6  
舒缓按摩垫  
Wellness massage pad



A 7.8cm

B 10.8cm

C 10.8cm

D 14cm

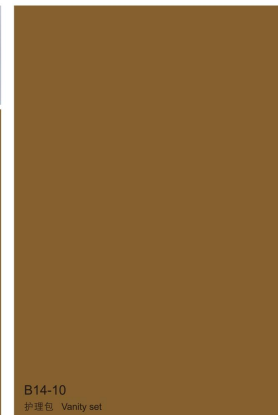
B14-7  
指甲锉 Nail file



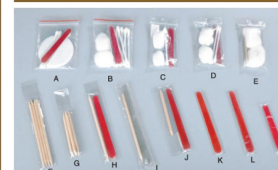
B14-8  
卫生袋 Sanitary bag



B14-9  
浴帽 Shower cap



B14-10  
护理包 Vanity set



B14-11  
针线包 Sewing kit



# PEN

Sometimes a few little things will make life easier,  
a pen,  
a notepad,  
it will help the guest records the sudden  
inspiration!

有时候一些小的物件会让生活变得更加轻松，  
一支签字笔，  
一本记事本，  
这将有助于客人备忘突如其来的灵感！



B016-1  
签字笔 Pen



B016-2  
签字笔 Pen



B016-5  
签字笔 Pen



B016-4  
签字笔 Pen



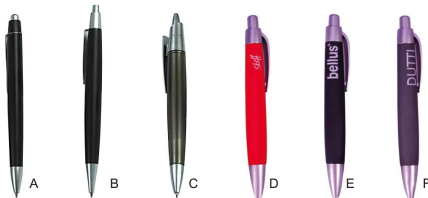
B016-3  
签字笔 Pen



B016-8  
签字笔 Pen



B016-7  
签字笔 Pen



B016-6  
签字笔 Pen



B016-9  
铅笔 Pencil





# DRINKING SUPPLIES

All kinds of comfortable drinking small accessories, reflects the modern hotel hospitality and temperament of the internationalization of great accomplishment!

各种舒心的饮用小配件，体现出现代酒店殷勤好客又极具修养的国际气质！



B018-1  
杯垫 Coasters



B018-2  
杯垫 Coasters



B018-3  
杯垫 Coasters



B018-4  
杯垫 Coasters



B018-5  
杯垫 Coasters



B018-6  
杯垫 Coasters



B018-7  
杯垫 Coasters



B018-8  
杯垫 Coasters



B018-9  
杯垫 Coasters



A



B



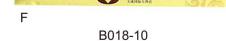
C



D



E



F

B018-10  
吸管 Straw



B018-11  
杯垫垫



B018-12  
果叉 Fruit fork



B018-13  
调酒棒 Sizzle stick



B019-1  
毛巾拖鞋 Cotton slippers



B019-2  
无纺布拖鞋 Non-woven slippers



B019-3  
无纺布拖鞋 Non-woven slippers



B019-4  
毛巾拖鞋 Cotton slippers



B019-5  
毛巾拖鞋 Cotton slippers



B019-6  
毛巾拖鞋 Cotton slippers



B019-7  
华夫格拖鞋 Waffle slipper



B019-8  
华夫格拖鞋 Waffle slipper



B019-9  
华夫格拖鞋 Waffle slipper



B019-10  
绒料拖鞋 Velvet slippers



B019-11  
绒料拖鞋 Velvet slippers



B019-12  
绒料拖鞋 Velvet slippers



B019-13  
绒料拖鞋 Velvet slippers



B019-14  
绒料拖鞋 Velvet slippers



B019-15  
绒料拖鞋 Velvet slippers



## TERRY TOWELLING

No bathroom is complete without them:bath and hand towels,bath robes,face cloths.  
Excellent quality,absorbent and skin-friendly.  
Super-soft terry cloth from head to toe.

这些物品浴室缺一不可；浴巾、毛巾、浴衣、面巾。  
品质卓越，吸水性超强，亲近皮肤。  
超柔软的毛巾布系列，满足您从头到脚的每一处所需。



B020-1  
毛巾料拖鞋 Cotton slippers



B020-2  
毛巾料拖鞋 Cotton slippers



B020-3  
毛巾料拖鞋 Cotton slippers



B020-4  
毛巾料拖鞋 Cotton slippers



B020-5  
小方巾 Hand towel

B020-6  
面巾 Face cloth

B020-7  
浴巾 Bath towel

B020-8  
浴垫 Bath mat



B020-9  
毛巾料浴袍 Kimono bath robe  
L / XL / XXL



B020-10  
绒面浴袍 Kimono bath robe  
L / XL / XXL



B020-11  
双面浴袍 Double bath robe  
L / XL / XXL



B020-12  
儿童浴袍 Kid's bath robe



# SUPPLIES BAGS



**B21-1**  
用品袋  
Transparent



**B21-2**  
用品袋  
Transparent



**B21-3**  
用品袋  
Transparent



**B21-4**  
用品袋  
Transparent



**B21-5**  
用品袋  
Transparent



**B21-6**  
用品袋  
Transparent



**B21-7**  
无纺购物袋  
Non-woven shopping bag

**B21-8**  
纸质购物袋  
Paper shopping bag



**B21-9**  
纸质购物袋  
Paper shopping bag

可根据您的要求定制规格 Can be customized any specifications

绣花 Embroidery      印花 Printing      织唛/印唛 Woven Label



**B22-1**

**B22-2**

**B22-3**

**B22-1**  
涤纶洗衣袋  
Polyester laundry bag  
46x62cm

**B22-2**  
纯棉洗衣袋  
cotton laundry bag  
46x62cm

**B22-3**  
麻布洗衣袋  
Linen laundry bag  
46x62cm



**B22-4**  
洗衣袋  
Laundry bag  
40x60cm



**B22-5**  
华肤棉电吹风袋  
Hair dryer bag  
22x27cm



**B22-6**  
麻布电吹风袋  
Hair dryer bag  
22x27cm



**B22-7**  
帆布电吹风袋  
Hair dryer bag  
22x27cm

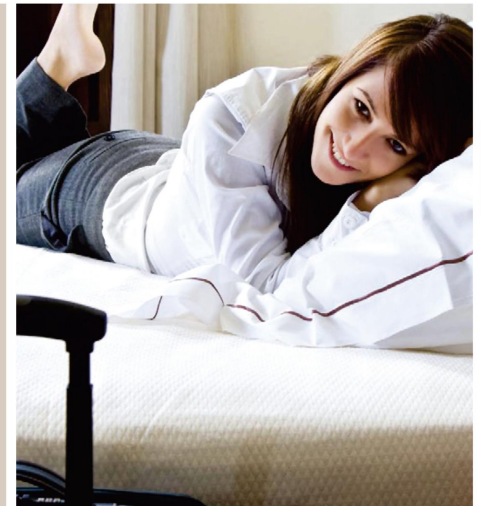


**B22-8**  
报纸袋  
News paper bag  
40x26cm

## BAG SERIES

A small knack that makes a big impression: is your hotel logo printed on the portable shopping bag.

一个令您的酒店能给人留下深刻印象的小窍门，就是将您的酒店标志印制在便携式的购物袋上。



# LEATHER PRODUCTS

The elegant collision of wood and leather, sedate, elegant show costly!

木纹与皮革的优雅碰撞，稳重、典雅中显奢华！



**B24-1**  
买单夹  
Cashier clip  
16x27cm



**B24-2**  
遥控夹  
Remote control clip  
11x24x4cm



**B24-3**  
服务指南(带夹)  
Service guide(with holder)  
25x32x4.5cm



**B24-4**  
便笺夹  
Memo clip  
13x18.5cm



**B24-5**  
会议垫  
Meeting pad  
22x32cm



**B24-6**  
签字垫  
Writing pad  
54x36cm



**B24-7**  
遥控插座  
Remote mountain  
17x9.5x20cm



**B24-8**  
资料架  
Information rack  
30x19x19cm



**B24-9**  
杯垫  
Cup mat  
20x11.5x1.5cm



**B04-10**  
冰桶座  
Ice bucket seat  
16.5x16.5x14.5cm



**B04-11**  
正方形纸巾盒  
Square tissue box  
14x14x4cm



**B04-12**  
长方形纸巾盒  
Rectangle tissue box  
24x13x8cm



**B24-13**  
文具盒  
Pencil case  
29x9.5x3.5cm



**B24-14**  
闹钟  
Alarm clock  
13.5x6.5x16.5cm



**B24-15**  
用品盒  
Supplies box  
23x20x16.5cm



**B24-16**  
垃圾桶  
Dustbin  
27x19x34cm



**B24-17**  
鞋篮  
Shoes basket  
38x30x9cm



**B24-18**  
托盘  
Tray  
40x30x4cm





# LEATHER PRODUCTS

Challenge the combination of different materials, carefully explain vogue and contracted yearning!

挑战不同材质的组合，认真诠释时尚与简约的向往！



B26-1  
便笺夹  
Memo clip  
13.5x19cm



B26-2  
买单夹  
Cashier clip  
24.5x13.5x4.5cm



B26-3  
服务指南  
Service guide  
32x25x4.5cm



B26-4  
冰桶  
Ice bucket  
16.5x22cm



B26-5  
文具盒  
Pencil case  
24x10.5x4cm



B26-6  
洗衣单夹  
Laundry list clip  
34x40cm



B26-7  
遥控座位  
Remote seat  
8.5x8x17cm



B26-8  
闹钟  
Alarm clock  
10x4.5x13cm



B26-9  
茶盒  
Tea box  
16x8x9cm



B26-10  
用品盒  
Supplies box  
26.5x20x12cm



B26-11  
长方形纸巾盒  
Rectangle tissue box  
24x12.5x7.5cm



B26-12  
正方形纸巾盒  
Square tissue box  
13x13x15cm



B26-13  
托盘  
Tray  
40x30x3.5cm



B26-14  
鞋盒  
Shoe box  
40x30x8cm



B26-15  
签字垫  
Writing pad  
45x42cm



B26-16  
垃圾桶  
Dustbin  
23.5x23.5x26.5cm



# LEATHER PRODUCTS

高端大气上档次，低调奢华有内涵！  
High grade atmosphere, low-key costly connotation



**B28-1**  
便笺夹  
Memo clip  
13x19.5cm



**B28-2**  
账单夹  
Cashier clip  
15x24cm



**B28-3**  
服务指南(带夹)  
Service guide(with holder)  
25x32x4cm



**B28-4**  
冰桶  
Ice bucket  
14x18cm



**B28-5**  
长方形纸巾盒  
Rectangle tissue box  
24x12.5x7cm



**B28-6**  
文具盒  
Pencil case  
25x10x4.5cm



**B28-7**  
闹钟  
Alarm clock  
10x10x3cm



**B28-8**  
遥控器座  
Remote seat  
7x8.5x15.5cm



**B28-9**  
签字垫  
Writing pad  
4x34cm



**B28-10**  
茶盒  
Tea box  
14x7.5x6.5cm



**B28-11**  
烟灰缸座  
Ashtray seat  
14.5x3.5cm



**B28-12**  
鞋筐  
Shoes basket  
35x25.5x18cm



**B28-13**  
托盘  
Tray  
35x25x6cm



**B28-14**  
用品盒  
Supplies box  
25x22.5x14.5cm



**B28-15**  
垃圾桶  
Dustbin  
26x19.5x33.5cm





## LEATHER PRODUCTS

唐朝之风，延续家的归属感受，以经典、实用、别致的设计带来极致的生活享受！

The belonging of the tang dynasty style, the continuation of family feeling to classic, practical and chic design brings extreme life to enjoy!



**B30-1**  
便签夹  
Memo clip  
19.5x13cm



**B30-2**  
会议垫  
Meeting pad  
24x34cm



**B30-3**  
服务指南  
Service guide  
25x33x4cm



**B30-4**  
买单夹  
Cashier clip  
15.5x24cm



**B30-5**  
闹钟  
Alarm clock  
10x4.5x13cm



**B30-6**  
茶盒  
Tea box  
14x8x6.5cm



**B30-7**  
遥控座垫  
Remote seat  
7x9x16cm



**B30-8**  
正方形纸巾盒  
Square tissue box  
13x13x14cm



**B30-9**  
长方形纸巾盒  
Rectangle tissue box  
24x13x7cm



**B30-10**  
鞋篮  
Shoe basket  
35x25x18cm



**B30-11**  
资料架  
Information rack  
36x10x25cm



**B30-12**  
用品盒  
Supplier box  
25x20x13.5cm



**B30-13**  
洗衣单夹  
Laundry list clip  
25x5.5x39cm



**B30-14**  
垃圾桶  
Dustbin  
26x19.5x34cm

# LEATHER PRODUCTS

金属与皮革的现代搭配，时尚精美的光泽感，低调恢弘！

The modern collocation of metal and leather, fashion exquisite burnish feeling, low-key magnificent!



**B32-1**  
遥控翻夹  
Remote control clip  
9.5x24cm



**B32-2**  
服务指南(带夹)  
Service guide(with holder)  
28x32x4cm



**B32-3**  
便签夹  
Memo clip  
13x19.5cm



**B32-4**  
闹钟  
Alarm clock  
10x4.5x13cm



**B32-5**  
茶点盒  
Tea box  
14x8x6.5cm



**B32-6**  
双格遥控翻座  
Double control remote seat  
14x9x16cm



**B32-7**  
冰桶  
Ice bucket  
14x18cm



**B32-8**  
正方形纸巾盒  
Square tissue box  
13x13x14cm



**B32-9**  
长方形纸巾盒  
Rectangle tissue box  
24x13x7cm



**B32-10**  
资料架  
Information rack  
35x10x23.5cm



**B32-11**  
鞋篮  
Shoes basket  
35x27x21cm



**B32-12**  
托盘  
Tray  
32x21x5cm



**B32-13**  
垃圾桶  
Dustbin  
25x19x34cm





# LEATHER PRODUCTS

沉稳与睿智的结合!  
Composed with the combination of wisdom!



B34-1  
便签夹  
Memo clip  
13x18.5cm



B34-2  
会议垫  
Meeting pad  
22x32cm



B34-3  
签字垫  
Writing pad  
54x36cm



B34-4  
遥控夹  
Remote control clip  
11x24.5x4cm



B34-5  
买单夹  
Cashier clip  
16x27cm



B34-6  
服务指南(带夹)  
Service guide (with holder)  
23.5x32x4cm



B34-7  
双格茶品盒  
Tea box  
15x9.5x6cm



B34-8  
三格遥控插座  
Three control remote seat  
8.5x17.5x10cm



B34-9  
闹钟  
Alarm clock  
13.5x6.5x17cm



B34-10  
冰桶  
Ice bucket  
14x18cm



B34-11  
正方纸巾盒  
Square tissue box  
14x14x15cm



B34-12  
长方纸巾盒  
Rectangle tissue box  
24x13x8.5cm



B34-13  
杯垫  
Cup mat  
21x12x2cm



B34-14  
资料架  
Information rack  
25.5x15x16cm



B34-15  
鞋篮  
Shoes basket  
37x27x21cm



B34-16  
鞋盒/托盘  
Shoes box/Tray  
43x31x8cm



## LEATHER PRODUCTS

时尚与古典的完美交融，燃点生命激情!

Fashion and classic perfect blend, burning passion life!



## LEATHER PRODUCTS

水木年华，美轮美奂!

Shui mu nian hua!The beauty of classical!



**B35-1**  
长方形巾盒  
Rectangle tissue box  
24x12.5x8.5cm

**B35-2**  
会议垫  
Meeting pad  
34x24cm

**B35-3**  
文具盒  
Pencil case  
24.3x9x7.3cm

**B35-4**  
杯垫  
Cup mat  
23x9x27/6cm

**B35-5**  
托盘  
Tray  
37.5x28.5x4.5cm

**B35-6**  
闹钟  
Alarm clock  
19.7x15.7x23.7cm

**B35-7**  
闹钟  
Alarm clock  
11x6x13.3cm

**B35-8**  
便签夹  
Memo clip  
13x19cm

**B35-9**  
托盘  
Tray  
43x28x4cm

**B35-10**  
正方形巾盒  
Square tissue box  
12.5x12.5x13.5cm

**B35-11**  
服务指南  
Service guide  
33x25x3cm

**B35-12**  
茶巾盒  
Tea box  
13x7.5x9cm

**B35-13**  
签字垫  
Writing pad  
50x36.5cm

**B35-14**  
鞋盒  
Shoe box  
34.5x26.5x8cm

**B35-15**  
垃圾桶  
Dustbin  
22x19x34cm

**B35-16**  
服务指南(带夹)  
Service guide(with holder)  
33x25x4cm

**B35-17**  
遥控器座  
Remote seat  
6.5x8.5x15.5cm



**B36-1**  
托盘  
Tray  
32.5x21.5x4.5cm

**B36-2**  
服务指南(带夹)  
Service guide(with holder)  
33x25x4cm

**B36-3**  
托盘  
Tray  
40x28x3cm

**B36-4**  
签字垫  
Writing pad  
45x35cm

**B36-5**  
请勿打扰牌  
Cue card  
25x9cm

**B36-6**  
便签夹  
Memo clip  
13x19cm

**B36-7**  
服务指南  
Service guide  
33x25x4cm

**B36-8**  
遥控器夹  
Remote control clip  
22x9x4cm

**B36-9**  
长方形巾盒  
Rectangle tissue box  
24x12.5x6.5cm

**B36-10**  
闹钟  
Alarm clock  
17x3x10cm

**B36-11**  
遥控器座  
Remote seat  
7.5x8.5x15.5cm

**B36-12**  
垃圾桶  
Dustbin  
26x19x34cm

**B36-13**  
洗衣单夹  
Laundry list clip  
38x24.5x5.5cm

**B36-14**  
文具盒  
Pencil case  
23x10x4.5cm





LEATHER PRODUCTS



**B37-1**  
双格茶品盒  
Tea box  
15x9.5x6cm



**B37-2**  
便笺夹  
Memo clip  
13x18.5cm



**B37-3**  
冰桶  
Ice bucket  
14x18cm



**B37-4**  
遥控器座  
Remote mountain  
8.5x8x17cm



**B37-5**  
长方纸巾盒  
Rectangle tissue box  
24x13x7cm



**B37-6**  
双层用品架  
Double supplies rack  
25.5x12x12.5cm



**B37-7**  
服务指南  
Service guide  
24.5x32cm



**B37-8**  
服务指南(带夹)  
Service guide(with holder)  
25x32x4.5cm

LEATHER PRODUCTS



**B38-1**  
闹钟  
Alarm clock  
11x4x14cm



**B38-2**  
双格茶品盒  
Tea box  
17x8x9cm



**B38-3**  
长方纸巾盒  
Rectangle tissue box  
25x14x9cm



**B38-4**  
托盘  
Tray  
49x35x6cm



**B38-5**  
服务指南(带夹)  
Service guide(with holder)  
27.5x34.5x6cm



**B38-6**  
资料架  
Information rack  
36x16x24cm



**B38-7**  
垃圾桶  
Dustbin  
28.5x19x31cm





**B39-1**  
四格茶品盒  
Tea box  
9x10x8.5cm



**B39-2**  
茶品盒/名片盒  
Tea box/card case  
11x7x7cm



**B39-3**  
烟灰缸座  
Ashtray seat  
13x13x3cm



**B39-4**  
烟灰缸座(不含烟缸)  
Ashtray seat(without ashtray)  
10x12x3.5cm



**B39-5**  
大板台垫  
Writing pad  
55x35cm

**B39-6**  
会议夹  
Meeting pad  
24x34cm



**B39-7**  
正方台垫  
Writing pad  
35x35cm



**B39-8**  
便签夹  
Memo clip  
12x17.5cm



**B39-9**  
服务指南(带夹)  
Service guide(with holder)  
24.5x32x4cm



**B39-10**  
服务指南  
Service guide  
24.5x32cm



**B39-11**  
双格遥控器座  
Double control remote seat  
8x10x15.5cm



**B39-12**  
用品盒  
Supplies box  
25x22x12.5cm



**B39-13**  
多功能长方纸巾盒  
Multi-function Rectangle tissue box  
26x13x11cm



**B39-14**  
多功能正方纸巾盒  
Multi-function square tissue box  
13x13x14cm



**B39-15**  
垃圾桶  
Dustbin  
26x19x34



**B39-16**  
资料架  
Information rack  
26.5x11.5x20cm



**B39-17**  
鞋篮  
Shoes basket  
37x27x21cm



**B40-1**  
双格遥控器座  
Double control remote seat  
8.5x12x17cm



**B40-2**  
遥控器座  
Remote seat  
8.5x8x17cm



**B40-3**  
闹钟  
Alarm clock  
13.5x6.5x17cm



**B40-4**  
双格茶品盒  
Tea box  
15x9.5x6cm



**B40-5**  
单格茶品盒  
Tea box  
8x9x6cm



**B40-6**  
闹钟  
Alarm clock  
13x5x17cm



**B40-7**  
遥控器夹  
Double control clip  
11x24.5x4cm



**B40-8**  
买单夹  
Cashier clip  
16x27cm



**B40-9**  
便签夹  
Memo clip  
13x18.5cm



**B40-10**  
正方纸巾盒  
Square tissue box  
13x13x14cm



**B40-11**  
小正方纸巾盒  
Small square tissue box  
13x13x7cm



**B40-12**  
长方纸巾盒  
Rectangle tissue box  
24x13x7cm



**B40-13**  
三折服务指南  
Three fold service guide  
24.5x32x3cm



**B40-14**  
服务指南  
Service guide  
24.5x32cm



**B40-15**  
托盘  
Tray  
32x21x5cm





**B41-1**  
长方形巾盒  
Rectangle tissue box  
24x13x7.5cm

**B41-2**  
正方形巾盒  
Square tissue box  
13x13x13cm

**B41-3**  
托盘  
Tray  
48x30x4cm

## LACQUER WOOD CRAFT

漆木工艺



**B41-4**  
物品台  
Supplies rack  
50x30x7.5cm

**B41-5**  
托盘  
Tray  
48x30x4cm



**B42-1**  
物品盒 (小号)  
Supplies box(S)  
14x14x5.5cm

**B42-2**  
物品盒 (中号)  
Supplies box(M)  
17x17x6.5cm

**B42-3**  
物品盒 (大号)  
Supplies box(L)  
20x20x8cm

**B42-4**  
木杯垫套装  
Cup mat set  
12.5x12.5x5.5cm

**B42-5**  
托盘 (小号)  
Tray(S)  
38x25x4.5cm

**B42-6**  
木托盘 (中号)  
Tray(M)  
40x27x4.5cm

**B42-7**  
木托盘 (大号)  
Tray(L)  
42x29x4.5cm

## LACQUER WOOD CRAFT

漆木工艺



**B42-8**  
用品盒  
Supplies box  
28x28x6cm

**B42-9**  
托盘  
Tray  
36x20x4.5cm

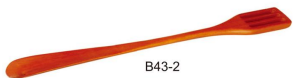
**B42-10**  
物品桶 (小号)  
Supplies barrel(S)  
15x20cm

**B42-11**  
物品桶 (中号)  
Supplies barrel(M)  
20x25cm

**B42-12**  
物品桶 (大号)  
Supplies barrel(L)  
25x31cm



B43-1  
衣架 Clothes tree



B43-2  
鞋抽 Shoes pry



B43-4  
用品盒 Supplies box



B43-6  
垃圾桶 Dustb



B43-7  
纸巾筒 Tissue box



B43-3  
毛巾桶 Towels barrels



B43-5  
用品盒 Supplies box



B43-8  
用品盒 Supplies box



B44-1  
用品盒 Supplies box



B44-2  
用品盒 Supplies box



B44-3  
纸巾筒 Tissue box



B44-4  
垃圾桶 Dustb



B44-5  
衣架 Clothes tree



B44-6  
垃圾桶 Dustb



B43-7  
用品盒 Supplies box



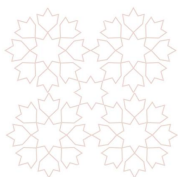
B43-8  
鞋抽 Shoes pry



B43-9  
毛巾桶 Towels barrels

WOODER SERIES





WOODER SERIES



**B45-1**  
双格茶品盒  
Tea box  
16x8.5x5cm



**B45-2**  
杯垫  
Cup mat  
21x10x2.5cm



**B45-3**  
物品/首饰盒  
Supplies box/Jewelry box  
9x22x5cm



**B45-4**  
冰桶座  
Ice bucket seat  
18x18x15cm



**B45-5**  
三层物品架  
Three supplies rack  
26.5x18.5x12cm



**B45-6**  
脚踏托盘  
Lidder tray  
25x36x6cm



**B45-7**  
物品盒  
Supplies box  
24.5x22x7cm



**B45-8**  
资料盒  
Information box  
35.5x31.5x4cm



**B46-1**  
皂碟  
Soap dish  
8x8x1.7cm



**B46-2**  
象牙牙刷  
Ivory dress brush  
29x3.5cm



**B46-3**  
象牙鞋刷  
Ivory shoes brush  
31.5x4cm



**B46-4**  
正方形巾盒  
Square tissue box  
13x13x15cm



**B46-5**  
茶品盒  
Tea box  
17x8.5x9.5cm



**B46-6**  
用品盒  
Supplies box  
24x17x8.5cm



**B46-7**  
用品盒  
Supplies box  
24x24x7cm



**B46-8**  
冰桶座  
Ice bucket seat  
17x17x14cm



**B46-9**  
托盘  
Tray  
45x35x5cm



**B46-10**  
垃圾桶  
Dustbin  
24x24x28cm

WOODER SERIES



**B47-1**  
烟灰缸座(配玻璃烟缸)  
Ashtray seat set  
11.5x11.5x2.5cm



**B47-2**  
烟灰缸座(配玻璃烟缸)  
Ashtray seat set  
11.5x11.5x2.5cm



**B47-3**  
杯垫套装  
Cup mat set  
10x5.5x1.1cm



**B48-1**  
方格物品盘  
Tray  
33x20x2cm



**B48-2**  
方格毛巾碟/杯垫  
Towel tray/Cup mat  
20x10x2cm



**B48-3**  
方格皂碟  
Soap dish  
9x9x1.2cm



**B47-4**  
三层物品架  
Three supplies rack  
26.5x18.5x12cm



**B47-5**  
双格遥控器座  
Double control remote seat  
8x8.5x9.5cm



**B47-6**  
长方纸巾盒  
Rectangle tissue box  
24x12.5x7cm



**B48-4**  
物品盒  
Supplies box  
30x20x12cm



**B48-5**  
物品盒(不含钢盘)  
Supplies box  
25x20x13.5cm



**B48-6**  
物品盒  
Supplies box  
19x25x13



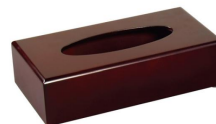
**B47-7**  
鞋篮  
Shoes basket  
35x27x21cm



**B47-8**  
阶梯托盘  
Ladder tray  
25x36x6cm



**B47-9**  
冰桶座  
Ice bucket seat  
17x17x13.5cm



**B48-7**  
长方纸巾盒  
Rectangle tissue box  
24x12x6cm



**B48-8**  
正方纸巾盒  
Square tissue box  
13x13x12cm



**B48-9**  
长方托盘  
Rectangle tray  
45x28x5cm



**B48-10**  
正方形托盘  
Square tray  
28x28x5cm



**B48-10**  
告示牌  
Sign stand  
33x32x64cm



# WOODER SERIES

优质的木制品，匠心工艺，点亮您的酒店客房！

High quality wood, meticulous process, the sparkling to your hotel room!



ACRYLIC SERIES



B49-1  
非杯孔物品盒  
Supplies box  
26x20x7cm



B49-2  
物品盒  
Supplies box  
28x21x8cm



B49-3  
物品盒  
Supplies box  
28x21x6.5cm



B50-1  
遥控器架  
Remote seat  
7.5x8x15cm



B50-2  
花瓶  
Vase  
7x5x19cm



B50-3  
带盖双格茶叶盒  
Tea box  
14.5x6x7cm



B50-4  
双格茶叶盒  
Tea box  
14.5x6x7cm



B50-5  
长方形纸巾盒  
Rectangle tissue box  
25x13x6cm



B50-6  
方形纸巾盒  
Square tissue box  
13x13x13cm



B50-7  
杯垫  
Cup mat  
21x12x1.3cm



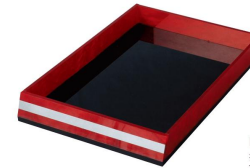
B50-8  
饮品架  
Drink holder  
30x10x4.5cm



B50-9  
香碟  
Soap dish  
9x9x1.3cm



B50-10  
毛巾托  
Towel tray  
23x16x1.3cm



B50-11  
托盘  
Tray  
31.5x22x4cm



B50-12  
托盘  
Tray  
33x22x3cm

ACRYLIC SERIES



B52-1  
皂碟  
Soap dish  
9x9x1cm



B52-2  
双格茶品盒  
Tee box  
10x12x7cm



B52-3  
遥控器座  
Remote seat  
10x9x11.5cm



B52-4  
长方形纸巾盒  
Rectangle tissue box  
25x13x7cm



B52-5  
正方形纸巾盒  
Square tissue box  
13x13x13.5cm



B52-6  
托盘  
Tray  
38x28x5cm



B52-7  
毛巾碟  
Towel tray  
26x15x3cm



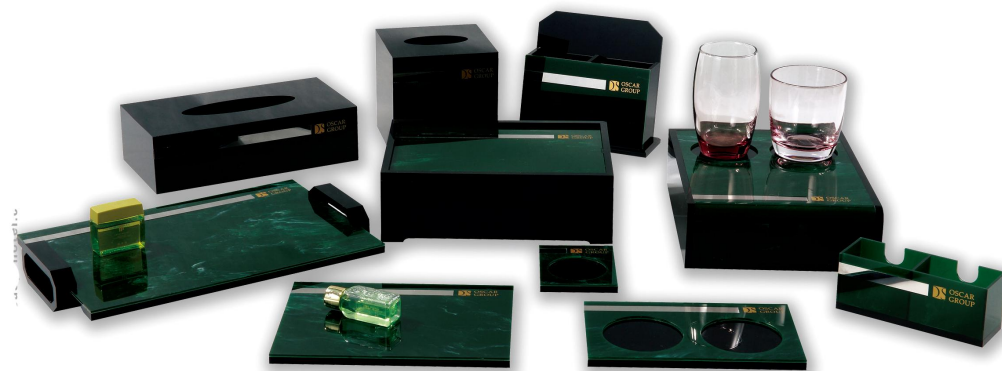
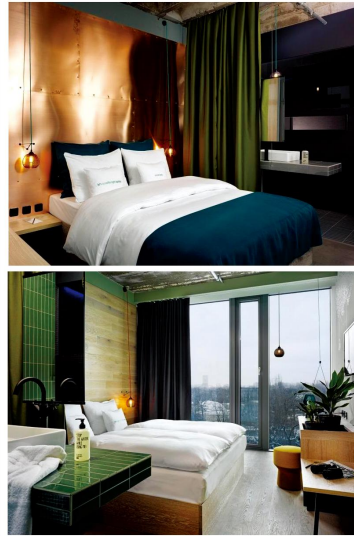
B52-8  
物品托盘  
Supplies tray  
25x35x8cm



B52-9  
物品架  
Supplies rack  
24x12x34cm



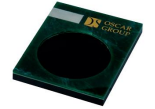
ACRYLIC SERIES



B54-1  
茶叶盒  
Tea box  
14.5x8x6cm



B54-2  
杯垫  
Cup mat  
20x12x1.1cm



B54-3  
皂碟  
Soap dish  
8x10x1.1cm



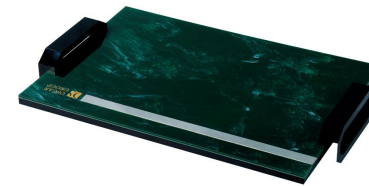
B54-4  
方形纸巾盒  
Square tissue box  
13x13x13cm



B54-5  
长方形纸巾盒  
Rectangle tissue box  
25x13x6cm



B54-6  
遥控器  
Remote seat  
18x8x15cm



B54-7  
托盘  
Tray  
33x22x4.5cm



B54-8  
毛巾托  
Towel tray  
22x16x1.1cm



B54-9  
物品盒  
Supplies box  
25x18x8cm



B54-10  
带杯孔物品盒  
Supplies box  
25x18x8cm

ACRYLIC SERIES



B56-1  
皂碟  
Soap dish  
9x9x1.5cm



B56-2  
杯垫  
Cup mat  
20x10x1.5cm



B56-3  
饮品架  
Drink holder  
17x22.5x6cm



B56-4  
花瓶  
Vase  
5x5x18cm



B56-5  
三格茶盅格  
Tea box  
20x7x8cm



B56-6  
毛巾碟  
Towel tray  
23x16x2cm



B56-7  
双控遥控座  
Double control remote seat  
16.5x6.5x15.5cm



B56-8  
正方形巾盒  
Square tissue box  
13x13x13.5cm



B56-9  
长方形巾盒  
Rectangular tissue box  
25x13x6cm



B56-10  
物品盒  
Supplies box  
29x21x8.5cm



B56-11  
托盘  
Tray  
35x25x3cm



ACRYLIC SERIES



B58-1  
三格茶叶盒  
Tea box  
20x6x7cm



B58-2  
遥控架  
Remote seat  
16.5x6.5x15cm



B58-3  
赠饮架  
Drink holder  
21x10x5cm



B58-4  
杯垫  
Cup mat  
21x13x1cm



B58-5  
方形纸巾盒  
Square tissue box  
13x13x13cm



B58-6  
长方形纸巾盒  
Rectangle tissue box  
25x13x6cm



B58-7  
易耗品托盘  
Tray  
31x21.5x6cm



B58-8  
易耗品托盘  
Tray  
31.5x22x4cm



B58-9  
用品盒  
Supplies box  
30x18x7.5cm



B58-10  
翻盖用品盒  
Supplies box  
25.6x17x8.5cm



B58-11  
抽屉式用品盒  
Supplies box  
29x21x6.8cm

## ACRYLIC SERIES



**B60-1**  
双格茶叶盒  
Tea box  
16.5x6x7cm



**B60-2**  
双格茶叶盒  
Tea box  
15x7x8cm



**B60-3**  
双格遥控器架  
Double control remote seat  
16.5x8x16cm



**B60-4**  
杯托  
Cup mat  
21x13x1cm



**B60-5**  
方形纸巾盒  
Square tissue box  
13x13x13cm



**B60-6**  
长方形纸巾盒  
Rectangle tissue box  
25x13x6cm



**B60-7**  
物品盒  
Supplies box  
25x25x10cm



**B60-8**  
带杯孔用品盒  
Supplies box  
28x18x6cm



**B60-9**  
毛巾托  
Towel tray  
23x16x1.6cm



**B60-10**  
梯形物品盒  
Tray  
30x25x6cm



**B60-11**  
提手托盘  
Tray  
30x22x6.5cm



## ACRYLIC SERIES



B62-1  
香碟  
Soap dish  
8x10x3cm



B62-2  
便签夹  
Memo clip  
19x13x1cm



B62-3  
双格遥控器座  
Double control remote seat  
18x6x13cm



B62-4  
棉签/棉签盒  
Cotton bottle  
6.2x6.2x10cm/单个  
22.5x8.5x10.8cm/整体



B62-5  
茶叶盒  
Tea box  
16.5x6x7cm



B62-6  
毛巾托  
Towel tray  
22x15x4cm



B62-7  
冰桶  
Ice bucket seat  
16.5x16.5x14.5cm



B62-8  
方形纸巾盒  
Square tissue box  
14x14x15cm



B62-9  
长方形纸巾盒  
Rectangle tissue box  
25x13x6cm



B62-10  
双层物品盒  
Supplies box  
25x25x11cm



B62-11  
带杯托物品盒  
Supplies box  
30x18x7.5cm



B62-12  
托盘  
Tray  
31x22x4.8cm



B62-13  
提手托盘  
Tray  
31x22x6.5cm



# ACRYLIC SERIES



**B64-1**  
双格茶品盒  
Tea box  
15x8x5.5cm



**B64-2**  
皂碟  
Soap dish  
8.8x8.8x1.5cm



**B64-3**  
毛巾碟  
Towel tray  
22x12x2.5cm



**B64-4**  
双格遥控器座  
Double control remote seat  
8x11.5x14cm



**B64-5**  
正方形巾盒  
Square tissue box  
13x13x13.5cm



**B64-6**  
长方形巾盒  
Rectangle tissue box  
25x13x7cm



**B64-7**  
物品盒  
Supplies box  
28x18x9cm



**B64-8**  
物品盒  
Supplies box  
23x22x25.5cm



**B64-9**  
托盘  
Tray  
33x26x4.5cm





**B65-1**  
皂碟  
Soap dish  
10x7x1cm



**B65-2**  
杯垫  
Cup mat  
21x11x1.3cm



**B65-3**  
毛巾托  
Towel tray  
23x16x1.3cm



**B65-4**  
茶叶盒  
Tea box  
16.5x5x7.5cm



**B65-5**  
遥控器架  
Remote seat  
16x7.5x13.5cm



**B65-6**  
花瓶  
Vase  
4x4x18cm



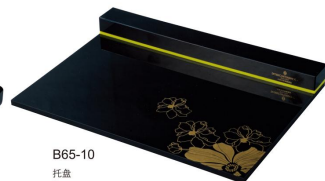
**B65-7**  
方形纸巾盒  
Square tissue box  
13x13x13cm



**B65-8**  
长方形纸巾盒  
Rectangle tissue box  
25x13x7.5cm



**B65-9**  
用品盒  
Supplies box  
32x18x6.5cm



**B65-10**  
托盘  
Tray  
31x22x3.3cm



**B66-1**  
皂碟  
Soap dish  
10x10x1cm



**B66-2**  
双格茶叶盒  
Tea box  
16x7x7.5cm



**B66-3**  
双格遥控器座  
Double control remote seat  
16x9x17cm



**B66-4**  
正方形纸巾盒  
Square tissue box  
12.5x12.5x13cm



**B66-5**  
长方形纸巾盒  
Rectangle tissue box  
24x12x6.5cm



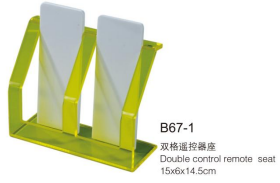
**B66-6**  
耗品盒  
Supplies box  
27.5x27.5x10cm



**B66-7**  
托盘  
Tray  
31.5x22x4cm



**B66-8**  
资料架  
Information rack  
29x9x17cm



**B67-1**  
双格遥控器座  
Double control remote seat  
15x6x14.5cm



**B67-2**  
耗品盒  
Supplies box  
24.5x20.5x6.5cm



**B67-3**  
浴盐罐  
Bath salt bottle  
7x10cm



**B67-4**  
正方形纸巾盒  
Square tissue box  
13x13x12.5cm



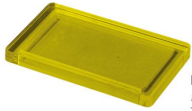
**B67-5**  
长方形纸巾盒  
Rectangle tissue box  
23x13x8cm



**B67-6**  
方形罐  
Cotton bottle  
6.5x6.5x11cm



**B67-7**  
杯垫  
Cup mat  
9x9x1cm



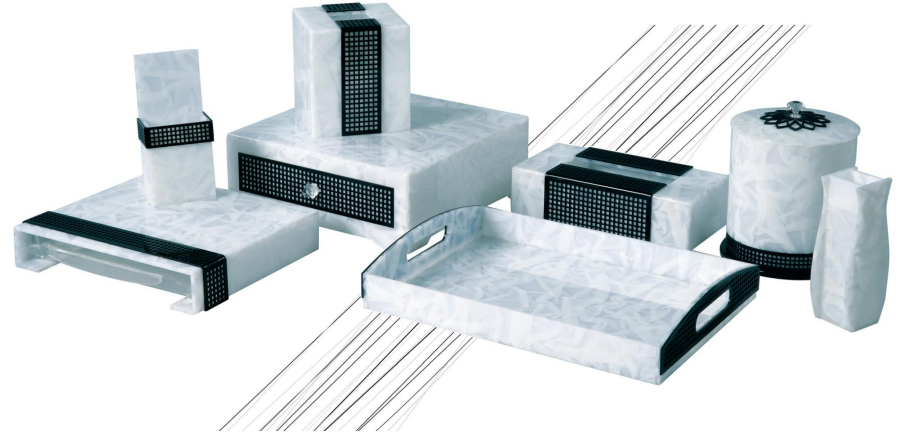
**B67-8**  
毛巾垫  
Towel tray  
12x8x1cm



**B67-9**  
茶品盒  
Tea box  
9x6x6cm



**B67-10**  
请勿吸烟牌  
Reminding card  
9x5x6cm



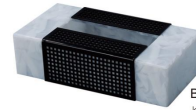
**B68-1**  
冰桶  
Ice bucket  
1.5L



**B68-2**  
花瓶  
Vase  
24x12x6.5cm



**B68-3**  
单格遥控器座  
Remote seat  
8x8x17cm



**B68-4**  
长方形纸巾盒  
Rectangle tissue box  
24x12x6.5cm



**B68-5**  
正方形纸巾盒  
Square tissue box  
12.5x12.5x14cm



**B68-6**  
单层耗品盒  
Supplies box  
24.8x18.5x5cm



**B68-7**  
耗品盒  
Supplies box  
27.5x27.5x10cm



**B68-8**  
托盘  
Tray  
35x25x4/6cm

ACRYLIC SERIES





ACRYLIC SERIES



**B69-1**  
皂碟  
Soap dish  
9x12x3cm



**B69-2**  
双格茶叶盒  
Tea box  
16x7x7.5cm



**B69-3**  
单格遥控器座  
Tea box  
8x9x15.5cm



**B69-4**  
双格遥控器座  
Double control remote seat  
15.5x8.5x17cm



**B69-5**  
长方形纸巾盒  
Rectangle tissue box  
24x12.5x6.5cm



**B69-6**  
正方形纸巾盒  
Square tissue box  
13x13x13.5cm



**B69-7**  
毛巾碟  
Towel tray  
25.5x15x4cm



**B69-8**  
托盘  
Tray  
32x23x5/3cm

**B70-1**  
物品盒  
Supplies box  
24.5x20x7.5cm

**B70-2**  
花瓶  
Vase  
5x5x18cm

**B70-3**  
长方形纸巾盒  
Square tissue box  
25x13x6cm

**B70-4**  
正方形纸巾盒  
Rectangle tissue box  
13x13x13cm



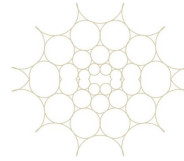
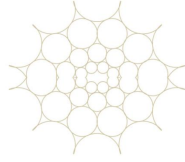
**B70-5**  
遥控插座  
Remote mountain  
12x12x10cm

**B70-6**  
托盘  
Tray  
32x21x4

**B70-7**  
茶品盒  
Tea box  
16x7x8cm

**B70-8**  
杯垫  
Cup mat  
20x10x1cm

**B70-9**  
皂碟  
Soap dish  
9x9x1.2cm



**B71-1**  
长方纸巾盒  
Rectangle tissue box  
25x13x8.5cm



**B71-2**  
正方纸巾盒  
Square tissue box  
12.5x12.5x14.5cm



**B71-3**  
茶具盒  
Tea box  
8x6x7cm



**B71-4**  
毛巾碟  
Towel tray  
20x10x3cm



**B71-5**  
皂碟  
Soap dish  
9.5x7x1.5cm



**B71-6**  
棉花罐  
Cotton bottle  
7x7x9cm



**B71-7**  
托盘  
Tray  
30x20x3cm



**B71-8**  
物品盒  
Supplies box  
21.5x26.5x8cm



**B72-1**  
茶叶盒  
Tea box  
16.5x6x7cm



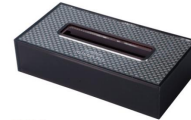
**B72-2**  
遥控器架  
Remote seat  
16x7.5x13.5cm



**B72-3**  
皂碟  
Soap dish  
10x7x1.3cm



**B72-4**  
杯垫  
Cup mat  
21x13x1.3cm



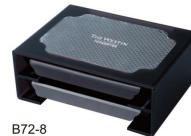
**B72-5**  
长方纸巾盒  
Rectangle tissue box  
25x13x6cm



**B72-6**  
方形纸巾盒  
Square tissue box  
13x13x13cm



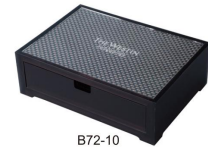
**B72-7**  
毛巾碟  
Towel tray  
23x16x1.3cm



**B72-8**  
双层用品盒  
Supplies box  
25x18.5x9.5cm



**B72-9**  
托盘  
Tray  
30x22x4cm



**B72-10**  
用品盒  
Supplies box  
25x18x8cm





B73-1  
皂碟  
Soap dish  
12x8x2cm



B73-2  
茶品盒  
Tea box  
9x7x5.5cm



B73-3  
茶品盒  
Cotton bottle  
16x8x8cm



B73-4  
正方纸巾盒  
Square tissue box  
13x13x14cm



B73-5  
物品盒  
Supplies box  
22.5x15.5x11.5cm



B73-6  
双原物品架  
Double supplies rack  
25.5x12x12.5cm



B73-7  
托盘  
Tray  
30x20x6cm



B73-8  
物品盒  
Supplies box  
34.5x22x6cm

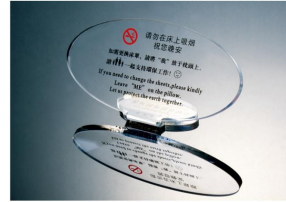


B73-9  
阶梯托盘  
Ladder tray  
20x30x6cm



B73-10  
资料架  
Information rack  
34x10x24.5cm

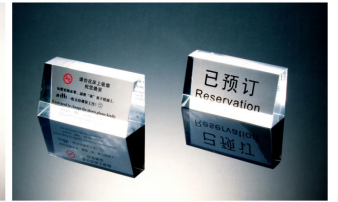
ACRYLIC SERIES



B74-1  
床头提示牌  
Bedroom reminding card  
12x4x6cm



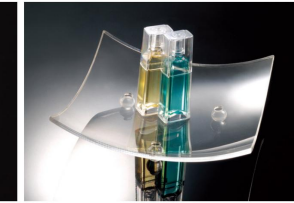
B74-2  
禁烟牌  
Reminding card  
6x2.5x6cm



B74-3  
桌面提示牌  
Reminding card  
10x3.5x5cm



B74-4  
托盘  
Tray  
22x32x5cm



B74-5  
相角托盘  
Tray  
17x17x6.5cm



B74-8  
A花瓶  
Vase  
7x7x15cm  
B花瓶  
Vase  
7x7x18.5cm



B74-6  
桌角托盘  
Tray  
35x25x3.5cm



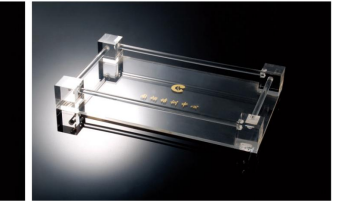
B74-7  
双原物品架  
Double supplies rack  
26x16x12.5cm



B74-9  
波纹托盘  
Corrugated tray  
29x20x2.9cm



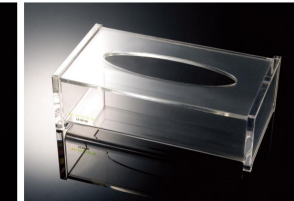
B74-10  
阶梯托盘  
Ladder tray  
35x30x6cm



B74-11  
托盘  
Tray  
35x25x4.5cm



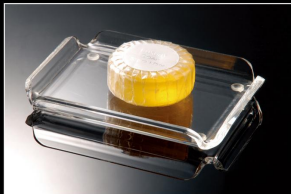
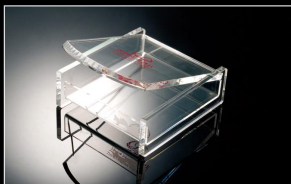
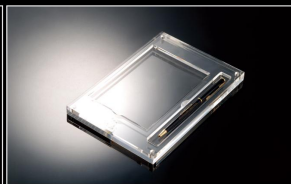
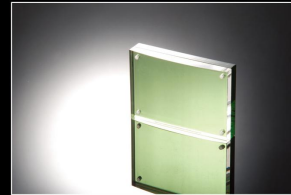
B74-12  
正方纸巾盒  
Square tissue box  
13x13x13cm



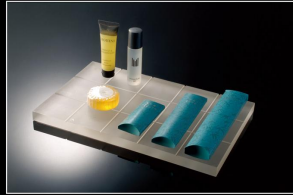
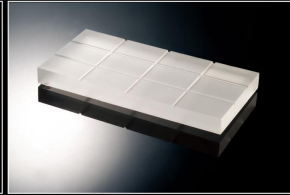
B74-13  
长方纸巾盒  
Rectangle tissue box  
23x13x6.5cm



B74-14  
多功能纸巾盒  
Multi-function tissue box  
23x23x8cm

B75-1 皂碟  
Soap dish 9x2cmB75-2 架皂架  
Soap rack 12x7x7cmB75-3 方格皂碟  
Soap dish 12.5x10.5x1.5cmB75-4 皂碟  
Soap dish 13.5x10.5x1.5cmB75-6 方格毛巾碟  
Towel tray 20x16x2cmB75-5 杯垫  
Cup mat 20x11x2.5cmB75-7 双格带盖茶品盒  
Tea box 16x9x9.5cmB75-8 双格带盖茶品盒  
Tea box 15.5x9x3.5cmB75-9 茶品盒  
Tea box 11.5x6.5x5cmB75-10 烟盒  
Cigarette case 11.5x12x3.5cmB75-11 毛巾碟  
Towel tray 17.5x13x3.5cmB75-12 便笺盒  
memo box 19x13x1.5cmB76-1 桌面提示牌  
Desktop remind card 8.5x6x1.5cmB76-2 名片夹  
Card case 12x6x9cmB76-3 资料架  
Information rack 28.5x11.5x18.5cmB76-4 桌面提示牌  
Desktop remind card 13.5x9.5x2cmB76-6 冰桶/物品桶  
Ice bucket 12x12x17cmB76-5 冰桶座 (不含冰桶)  
Ice bucket seat 17x17x13.6cmB76-7 桌面提示牌  
Desktop remind card 10x5.5x15.5cmB76-8 桌面提示牌  
Desktop remind card 9.5x4.8x12cmB76-9 翡翠明绿托盘  
Emerald green tray 18.5x13.5x3cmB76-10 翡翠明绿多功能架  
Multi-functional rack 24x9x14cmB76-11 翡翠明绿物品架  
Supplies rack 32.5x14.5x13cm



B77-1 磨砂茶品盒  
Tea box 8x5.5x5cmB77-2 磨砂茶品盒  
Tea box 8x8x8cmB77-3 磨砂多功能座  
Multi-functional rack 11x7x6.5cmB77-4 方格物品托盘  
Tray 33x20x2cmB77-5 方格毛巾碟  
Towel tray/Cup mat 20x10x2cmB77-6 三位杯垫  
Cup mat 26x10x2cmB77-7 托盘  
Tray 34x12x2.5cmB77-10 遥控插座  
Remote mount 8x9x13cmB77-8 物品架  
Supplies rack 16x13.5x12.5cmB77-9 托盘  
Tray 34x23.5x2.5cmB77-11 多功能物品盒  
Multi-function 21.5x13x4cmB77-14 桌面提示牌  
Desktop remind card 15.5x11.5x3cmB77-12 正方纸巾盒  
Square tissue box 13x13x14cmB77-13 长方纸巾盒  
Rectangle tissue box 25x13x6.5cmB78-1 冰粒桶  
Ice bucket 13x20.5cmB78-2 香槟桶  
Champagne bucket 14x21cm

B78-3 冰桶座 (不含冰桶)

B78-4 桌面提示牌  
Desktop remind card 13x5.5x10.5cmB78-5 桌面提示牌  
Desktop remind card 15x6.5x21cmB78-6 桌面提示牌  
Desktop rotating shape sign 14x4x22cmB78-7 桌面提示牌  
Desktop remind card 14x7.5x16.5cmB78-8 桌面提示牌  
Desktop remind card 11x5x16cmB78-9 桌面旋转提示牌  
Desktop rotating shape sign 9x20cm



ACRYLIC SERIES



**B79-1**  
禁烟提示牌  
No smoking remind card  
10x3.5x7cm



**B79-2**  
禁烟提示牌  
No smoking remind card  
11x4x6cm



**B79-3**  
床头提示牌  
Bedroom reminding card  
11x5.5x4.5cm



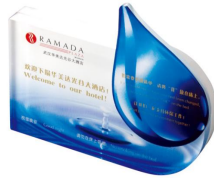
**B79-4**  
床头提示牌  
Bedroom reminding card  
11x4x6cm



**B79-5**  
床头提示牌  
Bedroom reminding card  
12x3.5x8.5cm



**B79-6**  
床头提示牌  
Bedroom reminding card  
7x3x8cm



**B79-7**  
床头提示牌  
Bedroom reminding card  
13x8x2cm



**B79-8**  
床头提示牌  
Bedroom reminding card  
13x1x8.5cm



**B79-9**  
网络连接提示牌  
Network connection remind card  
14x8x16.5cm



**B79-10**  
网络连接提示牌  
Network connection remind card  
12.5x4.5x13.5cm



**B80-1**  
天然石花瓶  
Natural stone vase  
7x20cm



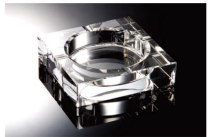
**B80-2**  
天然石花瓶  
Natural stone vase  
4x14cm



**B80-3**  
天然石花瓶  
Natural stone vase  
4x12cm



**B80-12**  
烟灰缸  
Ashtray 10x10x2.5cm



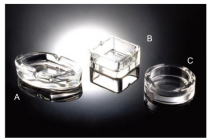
**B80-13**  
烟灰缸  
Ashtray 10x10x2cm



**B80-14**  
烟灰缸  
Ashtray 10x10x2cm



**B80-15**  
烟灰缸  
Ashtray 10x10x2.5cm



**B80-16**  
椭圆形烟缸  
Ellipse ashtray 7x12x3.5cm  
四方烟缸  
Square ashtray 7.3x3.5cm  
圆形烟缸  
Round ashtray 8.5x3.5cm



**B80-6**  
花瓶  
Vase 9x23cm



**B80-7**  
花瓶  
Vase 9x23cm



**B80-4**  
花瓶  
Vase 4x13cm



**B80-5**  
花瓶  
Vase 4x13cm



**B80-10**  
花瓶  
Vase 7.5x17.5cm



**B80-11**  
花瓶  
Vase 7.5x21cm



**B80-8**  
花瓶  
Vase 5x23cm



**B80-9**  
花瓶  
Vase 5x23cm





**B81-1**  
烟灰缸  
Ashtray  
7.3x8.3x5.5cm



**B81-2**  
烟灰缸  
Ashtray  
8.5x8.5x3.5cm



**B81-3**  
烟灰缸  
Ashtray  
7.3x8.3x5.5cm



**B81-4**  
烟灰缸  
Ashtray  
9x9x4cm



**B81-5**  
烟灰缸  
Ashtray  
5x9x6cm



**B81-6**  
烟灰缸  
Ashtray  
8.5x8.8cm



**B81-7**  
打火机  
Igniter  
6x6x6cm



**B81-8**  
杯子  
Glass  
6.3x8.3x9cm



**B81-9**  
杯子  
Glass  
9x9cm



**B81-10**  
花瓶  
Vase  
3x4x17cm



**B81-11**  
花瓶  
Vase  
4x4x15cm



**B82-1**  
香皂碟  
Soap dish  
6x9x2.5cm



**B82-2**  
香皂碟  
Soap dish  
10.5x10.5x2.5cm



**B82-3**  
烟灰缸  
Ashtray  
9x10.6x2.8cm



**B82-4**  
花瓶  
Vase  
3x4x17cm



**B82-5**  
花瓶  
Vase  
4x4x15cm



**B82-6**  
烟灰缸  
Ashtray  
7.2x7.5x4cm



**B82-7**  
烟灰缸  
Ashtray  
7.2x7.5x4cm





**B83-1**  
烟灰缸  
Ashtray  
11x6.5x4cm



**B83-2**  
香皂碟  
Soap dish  
10.5x10x2.5cm



**B83-3**  
香皂碟  
Soap dish  
6x9x2.5cm



**B83-4**  
棉花罐  
Cotton bottle  
10x10cm



**B83-5**  
烟灰缸  
Ashtray  
7.5x3.3cm



**B83-6**  
杯子  
Glass  
6x6.5x8.8cm



**B83-7**  
杯子  
Glass  
8.5x9cm



**B83-8**  
乳液罐  
Emulsion bottle  
6.5x6.5x19cm



**B83-9**  
花瓶  
Vase  
3x4x17cm



**B83-10**  
花瓶  
Vase  
4x4x15cm



**B83-11**  
花瓶  
Vase  
15.5x4.5x16cm



**B83-12**  
花瓶  
Vase  
13x4.5x15cm



**B84-1**  
烟灰缸  
Ashtray  
9x9x4cm



**B84-2**  
烟灰缸  
Ashtray  
10.6x10.6x2.5cm



**B84-3**  
烟灰缸  
Ashtray  
7x7.3x4cm



**B84-4**  
烟灰缸  
Ashtray  
7.3x8.3x5.5cm



**B84-5**  
烟灰缸  
Ashtray  
8.5x10x4.5cm



**B84-6**  
烟灰缸  
Ashtray  
12.5x14x5cm



**B84-7**  
杯子  
Glass  
6x6x8.2cm



**B84-8**  
牙签罐  
Toothpick bank  
4x4.5x10.2cm



**B84-9**  
打火机  
Igniter  
6x6x6cm



**B84-10**  
花瓶  
Vase  
4x4x15cm



**B84-10**  
花瓶  
Vase  
3x4x17cm





GLASS PRODUCTS



B85-1  
杯子  
Glass  
9x8.5cm



B85-2  
杯子  
Glass  
9x8.5cm



B85-3  
杯子  
Glass  
8x9cm



B85-4  
杯子  
Glass  
8x9cm



B85-5  
杯子  
Glass  
8x9cm



B85-6  
杯子  
Glass  
8x9cm



B85-7  
杯子  
Glass  
8x9cm



B85-8  
杯子  
Glass  
8x9cm



B85-9  
杯子  
Glass  
7x14.5cm



B85-10  
杯子  
Glass  
7x14.5cm



B86-1  
杯子  
Glass  
7x8.5cm



B86-2  
杯子  
Glass  
8x8.2cm



B86-3  
杯子  
Glass  
8x8.2cm



B86-4  
杯子  
Glass  
8x8.2cm



B86-5  
杯子  
Glass  
6.5x11.8cm



B86-6  
杯子  
Glass  
6.5x11.8cm



B86-7  
杯子  
Glass  
6.5x11.8cm



B86-8  
半圆皂碟  
Soap dish  
9.5x7.8x1.5cm



B86-9  
梅花皂碟  
Soap dish  
8.5x8.5x2cm



B86-10  
枕形皂碟  
Soap dish  
10x7x3cm



B86-11  
树叶皂碟  
Soap dish  
12x9x2.5cm



B86-12  
树叶皂碟  
Soap dish  
12x9x2.5cm



# 云境青花

Using the Chinese blue and white porcelain process to express the artistic conception of "cloud", simple and beautiful, neat and comfortable bathroom articles for use, suitable for hotels, clubs, high-grade life demand.

运用具有中国风的青花瓷工艺来表达“云”的意境，简单而柔美，整洁而舒心的浴室用品，适合于酒店、会所、高品位的生活需求。



**B87-1**  
A 漱口杯  
Gargle cup  
5x11cm  
B 皂碟  
Soap dish  
10.5x3cm  
C 乳液罐  
Emulsion bottle  
5x15.5cm  
D 马桶刷  
Toilet brush  
8x4.5cm



**B87-2**  
A 乳液罐  
Emulsion bottle  
9x12.5cm  
B 皂碟  
Soap dish  
11x3cm  
C 漱口杯  
Gargle cup  
8x8cm  
D 马桶刷  
Toilet brush  
13x38cm

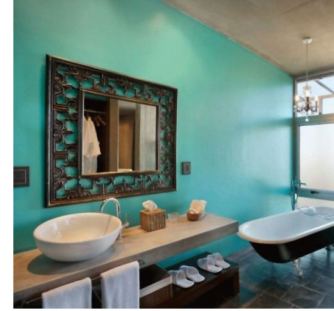


**B87-3**  
A 漱口杯  
Gargle cup  
7.2x7.2x10cm  
B 皂碟  
Soap dish  
13x9x3cm  
C 乳液罐  
Emulsion bottle  
12x8.5x7.6cm  
D 马桶刷  
Toilet brush  
20x14x34cm



**B87-4**  
A 棉花罐  
Cotton bottle  
10.3x8x7cm  
B 乳液罐  
Emulsion bottle  
13x5.3x10cm  
C 马桶刷  
Toilet brush  
13.3x9.3x33cm  
D 牙刷杯  
Tooth-brush cup  
8.3x5.3x9cm  
E 漱口杯  
Gargle cup  
8.3x5.3x9cm  
F 皂碟  
Soap dish  
13.3x9.3x2cm

# SANITARY WARE



**B88-1**  
(黑白 Black/White)  
A 物品罐  
Supplies can  
14x11x8cm  
B 洗液罐  
Gargle can  
23x6x8cm  
C 乳液罐  
Emulsion bottle  
11x6x13.5cm  
D 漱口杯  
Gargle cup  
11x6x8cm  
E 皂碟  
Soap dish  
12x9x2.2cm



**B88-2**  
A 漱口杯  
Gargle cup  
7.2x7.2x10cm  
B 乳液罐  
Emulsion bottle  
7.2x7.2x20cm  
C 马桶刷  
Toilet-brush  
9.4x9.4x39cm  
D 牙刷杯  
Tooth-brush cup  
7.2x7.2x10cm  
E 棉花罐  
Cotton bottle  
8x5x8cm  
F 皂碟  
Soap dish  
13x9x2cm



**B88-3**  
A 漱口杯  
Gargle cup  
8.3x5.3x12.5cm  
B 牙刷杯  
Tooth-brush cup  
8.3x5.3x12.5cm  
C 马桶刷  
Toilet-brush  
13.3x9.3x33cm  
D 乳液罐  
Emulsion bottle  
13x5.3x11cm  
E 棉花罐  
Cotton bottle  
10x8x7cm  
F 皂碟  
Soap dish  
13.3x9.3x2cm





**B89-1**  
圆皂碟  
Round soap dish  
9.6x2cm



**B89-2**  
正方皂碟  
Square soap dish  
9.5x9.5x2.5cm



**B89-3**  
长方皂碟  
Rectangle soap dish  
12.5x9.5x1.5cm



**B89-4**  
毛巾碟  
Towel plate  
21x14x1.5cm



**B89-5**  
正方形液罐  
Emulsion bottle  
7.3x7.3x19.5cm



**B89-6**  
圆形乳液罐  
Emulsion bottle  
7.5x20.5cm



**B89-7**  
闹钟  
Clock  
12x3x11cm



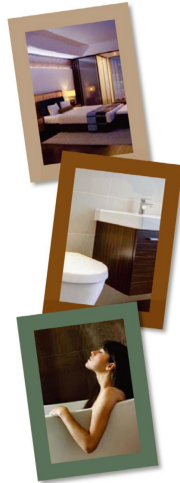
**B89-8**  
正方形巾盒  
Square tissue box  
13x13x15cm



**B89-9**  
棉花罐  
Cotton bottle  
8.2x8.2x11.5cm



**B89-10**  
物品盒  
Supplies box  
29.5x24x7cm



## SANITARY WARE



**B90-1**

**A 物品盒**  
Supplies box  
29.5x7cm

**B 正方形巾盒**  
Square tissue box  
13x13x15cm

**C 花瓶**  
Vase  
5.5x5.5x1.85cm

**D 弓形托盘**  
Bow tray  
31.5x20.5x3cm

**E 棉花罐**  
Cotton bottle  
8.2x8.2x11.5cm

**F 锥形乳液罐**  
Emulsion bottle  
7.5x20.5cm

**G 浴盆碗**  
Bath salt bowl  
12.8x7cm

**H 正方形乳液罐**  
Emulsion bottle  
7.3x7.3x19.5cm

**I 毛巾碟**  
Towel plate  
21x14x1.5cm

**J 长方形皂碟**  
Rectangle soap dish  
12.5x9.5x1.5cm

**K 物品托盘**  
Supplies tray  
32x19.8x4cm

**L 正方形皂碟**  
Square soap dish  
9.5x9.5x2.5cm



**B90-2**

**A 物品盒**  
Supplies box  
29.5x7cm

**B 正方形乳液罐**  
Emulsion bottle  
7.3x7.3x19.5cm

**C 弓形托盘**  
Bow tray  
31.5x20.5x3cm

**D 长方形皂碟**  
Rectangle soap dish  
12.5x9.5x1.5cm

**E 花瓶**  
Vase  
5.5x5.5x1.85cm

**F 正方形巾盒**  
Square tissue box  
9.5x9.5x2.5cm

**G 浴盆碗**  
Bath salt bowl  
12.8x7cm

**H 锥形乳液罐**  
Emulsion bottle  
7.5x20.5cm

**I 长方形托盘**  
Rectangle tray  
27x16.5x3cm

**J 正方形皂碟**  
Square soap dish  
9.5x9.5x2.5cm

**K 物品托盘**  
Supplies tray  
32x19.8x4cm

**L 圆形皂碟**  
Round soap dish  
9.6x2cm

**M 闹钟**  
Alarm clock  
12x3x11cm

**N 棉花罐**  
Cotton bottle  
8.2x8.2x11.5cm



STAINLESS STEEL



**B91-1**  
乳液罐  
Emulsion bottle  
6c6x16.5cm



**B91-2**  
漱口杯  
Gargle cup  
6x6x10cm



**B91-3**  
牙刷杯  
Tooth-brush cup  
6x6x10cm



**B91-4**  
物品盒  
Supplies box  
25x15.5x7cm



**B91-5**  
物品盒  
Supplies box  
23x12x9cm



**B91-6**  
正方形巾盒  
Square tissue box  
11x11x13cm



**B91-7**  
皂碟  
Soap dish  
11x8.5x0.7cm



**B91-7**  
毛巾碟  
Towel tray  
24x12.5x1.5cm



**B91-8**  
壁挂鞋抽  
Wall hanging shoes pry  
34x3x4cm



STAINLESS STEEL  
SANITARY WARE

可伸缩的手柄设计  
适合多种浴缸尺寸  
不锈钢材质经久耐用

The retractable handle design  
Suitable for a variety of bath crock size  
Made of stainless steel material durability



**B92-1**  
烛台  
Candlestick  
12x5x31.5cm



**B92-2**  
浴缸物品架  
Bath crock supplies rack



**B92-3**  
A 乳液罐  
Emulsion bottle  
7.2x7.2x13cm

B 漱口杯  
Gargle cup  
7.2x7.2x10cm

C 皂碟  
Soap dish  
13x9x2cm

D 马桶刷  
Toilet brush  
8x8x39cm



**B92-4**

A 乳液罐  
Emulsion bottle  
5x21cm

B 漱口杯  
Gargle cup  
5x13cm

C 皂碟  
Soap dish  
11x2.5cm

D 马桶刷  
Toilet brush  
8x37cm

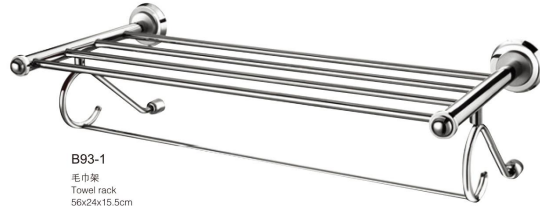




## STAINLESS STEEL SANITARY WARE

尊贵高洁美  
折射出超卓的生活品位

The noble pure beauty  
Reflects the remarkable life grade



**B93-1**  
毛巾架  
Towel rack  
56x24x15.5cm



**B93-2**  
毛巾架  
Towel rack  
56.5x11.7x6cm



**B93-3**  
毛巾架  
Towel rack  
67x24x10.5cm



**B93-4**  
毛巾架  
Towel rack  
56.5x8.5x6cm



**B94-1**  
皂碟  
Soap dish  
11x14.2x6cm



**B94-2**  
漱口杯架  
Gargle cup rack  
7.5x12.3x9.5cm



**B94-3**  
漱口杯架  
Gargle cup rack  
16x11.5x9.5cm



**B94-4**  
物品篮  
Supplies basket  
12.5x15x13cm



**B94-5**  
皂篮  
Soap basket  
15x12.5x7cm



**B94-6**  
纸巾架  
Tissue rack  
14.5x5.5x16.5cm



**B94-8**  
毛巾圈  
Towel ring  
16.5x8.5x18cm



**B94-7**  
衣钩  
Clothes hook  
6x5.6x8cm



**B94-9**  
马桶刷  
Toilet brush  
11x15.6x37cm



**B94-10**  
置物架  
Supplies rack  
53x15.2x6.5cm



**B94-11**  
双层转角置物架  
Double supplies rack  
27.5x27.5x42.5cm



**B95-1**  
漱口杯架  
Gargle cup rack  
15x12x11cm



**B95-2**  
漱口杯架  
Gargle cup rack  
21x12x11cm



**B95-3**  
皂碟  
Soap dish  
17x14x5.8cm



**B95-7**  
衣钩  
Clothes hook  
5.8x9.5x7cm



**B95-4**  
皂篮  
Soap basket  
17.5x14.8x5.8cm



**B95-5**  
纸巾架  
Tissue rack  
14.5x9x18cm



**B95-6**  
毛巾圈  
Towel ring  
20x9.5x23cm



**B95-8**  
毛巾架  
Towel rack  
67.5x27x10cm



**B95-9**  
毛巾架  
Towel rack  
58x14x9.5cm



**B95-10**  
置物架  
Supplies rack  
52.5x15x10cm



**B95-10**  
双层置物架  
Double supplies rack  
42x16x42cm

SANITARY WARE SERIES

SANITARY WARE SERIES



**B96-1**  
纸巾架  
Tissue rack  
13x7x4cm



**B96-2**  
毛巾架  
Towel rack  
13x7x4cm



**B96-3**  
纸巾架  
Tissue rack  
22x7x13cm



**B96-4**  
毛巾架  
Towel rack  
55.2x11.5x3cm



**B96-5**  
皂篮  
Soap basket  
13.5x13x5cm



**B96-6**  
毛巾架  
Towel rack  
55.2x7.5x3cm



**B96-7**  
毛巾架  
Towel rack  
A 50x20cm  
B 60x22cm



**B96-8**  
毛巾架  
Towel rack  
A 50x25cm  
B 60x25cm



**B96-9**  
浴缸扶手  
Bath crock armguard  
A 35x8cm  
B 45x8cm  
C 60x8cm



**B96-10**  
浴缸扶手  
Bath crock armguard  
42.5x8cm



BATHROOM SUPPLIES SERIES  
卫浴用品系列

我们颠覆一般冰冷金属感卫浴挂架，利用新技术将木质推及卫浴空间的每一个角落，而又没有木质开裂、变形的缺点，同样坚固实用。

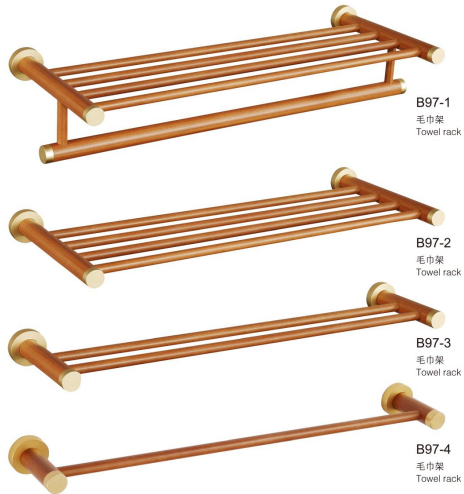
万物有性，道在自然万事万物中，格其不二，应以扶养为先，让人尽享木器之柔美。

器不离道，心未到之时，仅是器心若在其中便是道。

We overturn the common cold metal textures of bathroom racks, utilizing new technologies to spread wood to every corner of bathroom space, without the wood defects of cracking and deforming, with the same firmness and practicality.

Everything has its temperament, and the ways are in the nature. Character is unique and should be fostered. Let men can fully enjoy the grace of woodware.

Utensils can't do without rules. When not felt with the heart, it is a utensil; when the heart is in it, it becomes the way.



B97-1  
毛巾架  
Towel rack

B97-2  
毛巾架  
Towel rack

B97-3  
毛巾架  
Towel rack

B97-4  
毛巾架  
Towel rack



B97-5  
杯架  
Gargle cup rack



B97-6  
杯架  
Gargle cup rack



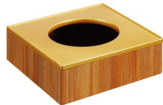
B97-7  
置物架  
Supplies rack



B97-8  
纸巾盒  
Square tissue box



B97-9  
皂碟  
Soap dish



B97-10  
皂碟  
Soap dish



B98-1  
物品盘  
Supplies plate  
17x17x6.5cm



B98-2  
物品盘  
Supplies plate  
17x17x6.5cm



B98-3  
皂碟  
Soap dish  
8.8x8.8x2cm



B98-4  
乳液罐  
Emulsion bottle  
350ml



B98-5  
乳液罐  
Emulsion bottle  
500ml



B98-6  
乳液罐  
Emulsion bottle  
350ml



B98-7  
乳液罐  
Emulsion bottle  
350ml



B98-8  
长方形纸巾盒  
Rectangle tissue box  
27x16x8.5cm



B98-9  
长方形纸巾盒  
Rectangle tissue box  
25x13x6.5cm



B98-10  
多功能马桶刷  
Multi-function toilet brush  
16x22cm



B98-11  
多功能马桶刷  
Multi-function toilet brush  
16x58cm

# STAINLESS STEEL TOILET PAPER HOLDER



**B99-1**  
纸巾架  
Tissue rack  
12.9x14.5x13.7cm



**B99-2**  
纸巾架  
Tissue rack  
17.2x11.5x8.5cm



**B99-3**  
纸巾架  
Tissue rack  
14.4x8.5x5cm



**B99-4**  
皂液器  
Soap machine  
15.2x10.4x19.7cm  
500mlx2



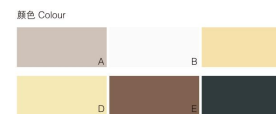
**B99-5**  
皂液器  
Soap machine  
500ml/800ml/1000ml



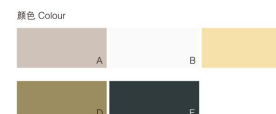
**B99-6**  
皂液器  
Soap machine  
500ml/800ml/1000ml



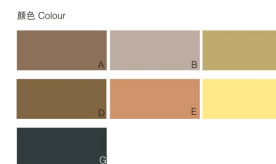
**B99-6**  
皂液器  
Soap machine  
21x8.5x12.5cm  
砂光/亮光



**B100-1**  
擦手纸架  
Hand tissue rack  
26x21x8cm



**B100-2**  
擦手纸架  
Hand tissue rack  
26x32.5x8.5cm



**B100-3**  
擦手纸架  
Toilet paper rack  
25.5x26x12cm



**B100-3**  
擦手纸架  
Hand tissue rack  
26x21x8cm



# STAINLESS STEEL TOILET PAPER HOLDER

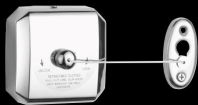




B101-1  
隐形镜盒  
Chineline device  
8.8x8.8x4.5cm



B101-2  
隐形镜盒  
Chineline device  
8.8x8.8x4.5cm



B101-3  
隐形镜盒  
Chineline device  
8.8x8.8x4.5cm



B101-4  
美容镜  
Cosmetic mirror  
5'+5x 8'+5x



B101-5  
美容镜  
Cosmetic mirror  
5'+5x 8'+5x



B101-6  
美容镜  
Cosmetic mirror  
5'+5x 8'+5x



B101-7  
美容镜  
Cosmetic mirror  
5'+5x 8'+5x



B101-8  
带灯美容镜  
Cosmetic mirror with lamp  
8'+3x



B101-9  
方形带灯美容镜  
Cosmetic mirror with lamp  
8.5'+3x



COSMETIC MIRROR



B102-1  
带灯美容镜  
Cosmetic mirror with lamp  
18cm+5x



B102-2  
带灯美容镜  
Cosmetic mirror with lamp  
18cm+5x



B102-3  
美容镜  
Cosmetic mirror  
18cm+5x



B102-4  
美容镜  
Cosmetic mirror  
18cm+5x



B102-5  
美容镜  
Cosmetic mirror  
15cm+5x



B102-6  
美容镜  
Cosmetic mirror  
15cm+5x

COSMETIC MIRROR

ELECTRONIC  
SCALE



**B105-1**  
健康秤  
Bathroom mechanical scale  
43.5x35x27.5cm  
130kg



**B105-2**  
健康秤  
Bathroom scale  
35.5x44cm  
180kg



**B105-3**  
健康秤  
Bathroom scale  
30.6x31.6x5.3cm  
180kg



**B105-4**  
健康秤  
Bathroom scale  
30x30x21cm  
180kg



**B105-5**  
健康秤  
Bathroom scale  
30x30x21cm  
180kg



**B105-6**  
健康秤  
Bathroom scale  
30x31.2x5cm  
180kg



**B105-7**  
健康秤  
Bathroom scale  
32x32x2.5cm  
150kg/330lb/23st



**B105-8**  
健康秤  
Bathroom scale  
31x30x2.2cm  
180kg



**B105-9**  
健康秤  
Bathroom scale  
32x35x24cm  
150kg



**B106-1**  
健康秤  
Bathroom scale  
29.2x27.8x5.7cm  
120kg



**B106-2**  
健康秤  
Bathroom scale  
28.6x27x4.6cm  
150kg



**B106-3**  
健康秤  
Bathroom scale  
27x28.5x4cm  
150kg



**B106-4**  
健康秤  
Bathroom scale  
28.6x27x4.6cm  
180kg



**B106-5**  
健康秤  
Bathroom scale  
46.5x24.5x15cm  
200kg



**B106-6**  
健康秤  
Bathroom scale  
47x30.6x11.2cm  
200kg

ELECTRONIC  
SCALE



**B106-7**  
健康秤  
Bathroom scale  
31x31x23cm  
200kg



**B106-8**  
健康秤  
Bathroom scale  
31x31x10cm  
180kg





**B107-1**  
闹钟  
Alarm clocks  
金属外壳 Metal frame



**B107-2**  
闹钟  
Alarm clocks  
金属外壳 Metal frame



**B107-3**  
闹钟  
Alarm clocks  
金属外壳 Metal frame



**B107-4**  
闹钟  
Alarm clocks  
金属外壳 Metal frame



**B107-5**  
闹钟  
Alarm clocks  
金属外壳 Metal frame



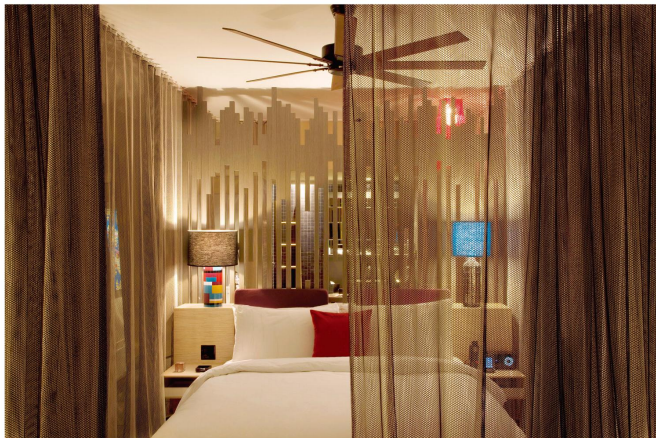
**B107-6**  
闹钟  
Alarm clocks  
金属外壳 Metal frame



**B107-7**  
闹钟  
Alarm clocks  
金属外壳 Metal frame



**B107-8**  
闹钟  
Alarm clocks  
金属外壳 Metal frame



**B108-1**  
闹钟  
Alarm clocks  
瑞士达德国机芯 Artex



**B108-2**  
闹钟  
Alarm clocks  
瑞士达德国机芯 Artex



**B108-3**  
闹钟  
Alarm clocks  
瑞士达德国机芯 Artex



**B108-4**  
闹钟  
Alarm clocks  
玻璃面金属底座  
Glass surface metal base



**B108-5**  
闹钟  
Alarm clocks  
玻璃面金属底座  
Glass surface metal base



**B108-6**  
闹钟  
Alarm clocks  
木质外框  
Wooden frame



**B108-7**  
闹钟  
Alarm clocks  
木质外框  
Wooden frame



**B108-8**  
闹钟  
Alarm clocks  
木质外框  
Wooden frame



**B108-9**  
闹钟  
Alarm clocks  
木质外框  
Wooden frame





**B109-1**  
手电筒  
Electric torch  
红色/白色  
Red/White



**B109-2**  
手电筒  
Electric torch  
黑色/白色  
Black/White



**B109-3**  
手电筒  
Electric torch  
红色/黑色  
Red/Black



**B109-4**  
手电筒  
Electric torch  
黑色/白色  
Black/White



**B109-5**  
手电筒  
Electric torch  
红色/黑色  
Red/Black



**B109-6**  
手电筒  
Electric torch  
黑色/银色  
Black/Silver



## EMERGENCY FLASHLIGHT



## IRONING SERIES

三态自动断电设计  
温度指示灯,可调节蒸汽,  
可为不同面料调节适当温度

Three states APO(Automatic Power Off)  
Temperature pilot light,Adjustable steam  
Adjustable Temperature for different fabrics

## IRONING



**B110-1**  
电熨斗  
Electric iron  
220~240v/1200w/50Hz  
10.5x25.5x13cm



**B110-2**  
电熨斗  
Electric iron  
220~240v/1600w/50Hz  
11.5x18x14cm



**B110-3**  
电熨斗  
Electric iron  
220v/1200w/50Hz  
11.5x17x15cm



**B110-4**  
电熨斗  
Electric iron  
220v/1450w/50Hz  
11x27x14cm



**B110-5**  
电熨斗  
Electric iron



**B110-6**  
熨斗架  
Electric iron frame  
黑色/白色  
Black/White



**B111-1**  
烫衣板  
Ironing board  
110x33x78cm



**B111-2**  
烫衣板  
Ironing board  
110x33x78cm



特殊的置网结构



**B111-3**  
烫衣板  
Ironing board  
碳黑色(Carbon black)  
银灰色(Silver grey)  
规格(Size):112x30cm  
钢管直径:2.5cm



**B112-2**  
烫裤架  
Trousers press  
41.5x35.5cm  
12.05kg

独立或固定在墙上的  
15和30分钟计时器设置  
恒温器  
手动取消选项  
硬币托盘和外套衣架  
SpaceSaver可用选项  
看到颜色范围选项可用

Free-standing  
15.30 and 45 minute timer setting  
Thermostat  
Manual cancel option  
LED countdown display  
Chrome tie hanger bar  
Coin tray and jacket hanger  
Reflective black glass fascia



**B112-3**  
烫斗及烫衣板一体系  
Iron and ironing board  
85x35x120cm



**B112-4**  
烫斗及烫衣板一体系  
Iron and ironing board  
L170 W35.5 H63.5/87.5/81.5 cm  
(有三个高度可调节)

**B112-1**  
烫裤架  
Trousers press  
41.5x38cm  
10kg

独立的  
15.30和45分钟计时器设置  
恒温器  
手动取消选项  
LED倒计时显示  
铬系衣架杆  
硬币托盘和外套衣架  
反光的黑色玻璃贴膜

Free-standing or wall-mounted  
15 & 30 minute timer setting  
Thermostat  
Manual cancel option  
Coin tray and jacket hanger  
SpaceSaver options available  
See colour range for options available

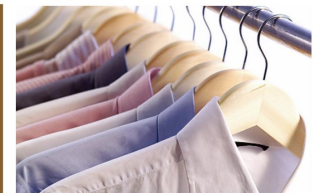


两点式着地设计, 双重锁定, 稳定安全;  
钢网结构, 防霉防潮, 经久耐用;  
五层高度调节, 方便客人使用;  
整体烤漆处理, 银色和碳黑色;  
高温隔热布料, 耐温纤维棉;  
烫斗尾板金属材料, 耐温防消;

Argelate lacquer of parching, mate the feet-setof skidproof.  
Tripod frame, steady and safe.  
The free control, the control optionally of high.  
Structure of steelines;  
Anti-slide, ante-moist, durable.  
Super-high temputer cotton.



## IRONING SERIES







浴缸枕头

全新橡胶制造，不含PVC成份，  
可放进洗衣机内清洗，  
枕头底部均补有伸缩性最佳的吸盘，  
绝对保障客人使用上的安全。

Math pillow  
Features  
Material: PVC free, machine washable,  
with press suction cup to fixed the position,  
soft & comfortable



B113-2  
浴缸枕头  
Bath pillow



B113-1  
防滑垫  
Bath mat  
53x53cm



B81-3  
防滑垫  
Bath mat  
38x76cm



B81-4  
防滑垫  
Bath mat  
34.5x76cm



B81-5  
浴帘  
Shower curtain  
180x200cm



B81-6  
浴帘  
Shower curtain  
180x200cm



B81-7  
浴帘  
Shower curtain  
180x200cm



B114-1  
防滑垫  
Bath mat  
36x58cm



B114-2  
防滑垫  
Bath mat  
55cm



B114-3  
防滑垫  
Bath mat  
35x75cm



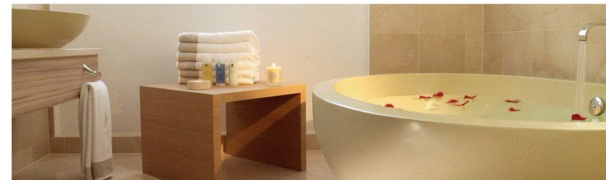
B114-4  
防滑垫  
Bath mat  
43x78cm



B114-5  
防滑垫  
Bath mat  
35.5x61cm



B114-6  
防滑垫  
Bath mat  
35x56cm



SENIOR BATH MAT



# DOOR SIGN HANGER



B115-1  
门牌挂件  
Door sign hanger



B115-2  
门牌挂件  
Door sign hanger



B115-3  
门牌挂件  
Door sign hanger



B115-4  
门牌挂件  
Door sign hanger



B115-5  
门牌挂件  
Door sign hanger



B115-6  
门牌挂件  
Door sign hanger



B115-7  
门牌挂件  
Door sign hanger



B116-1  
雨伞  
Umbrella  
咖啡色 Brown



B116-2  
雨伞  
Umbrella  
白色 White



B116-3  
雨伞  
Umbrella  
咖啡色 Brown



B116-4  
雨伞  
Umbrella  
卡其色 khaki

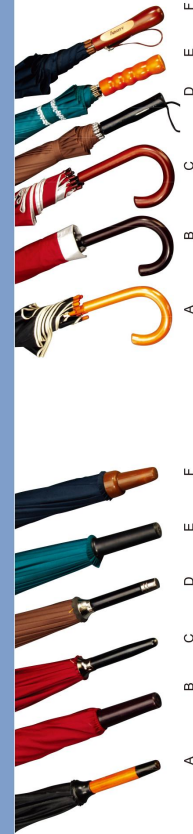


B116-5  
雨伞  
Umbrella  
红色 Red

## UMBRELLA SERVICE

在衣柜里为您的客人准备一把伞，当通上下雨或是阳光过于强烈的天气，顾客将会感受到您的人性化服务！

In the closet, an umbrella for your guest, when the weather in rain or sunshine is too strong, customer will feel the humanized service of you!





NETWORK CONNECTOR



B117-1  
网络连接器  
Network connector  
黑色 Black



B117-2  
网络连接器  
Network connector  
银色 Silver



B117-3  
网络连接器  
Network connector  
黑色 Black



B117-4  
网络连接器  
Network connector  
黑色/白色 Black/White



B117-5  
网络连接器  
Network connector  
黑色 Black



B117-6  
网络连接器  
Network connector  
银色 Silver



B117-7  
网络连接器  
Network connector  
黑色 Black



B117-8  
网络连接器  
Network connector  
银色 Silver



B118-1  
网络连接器  
Network connector  
金边 Gold edge



B118-2  
网络连接器  
Network connector  
金边 Gold edge



B118-3  
网络连接器  
Network connector  
银边 silver edge



B118-4  
网络连接器  
Network connector  
银边 silver edge



B118-5  
网络连接器  
Network connector  
黑色 Black



B118-6  
网络连接器  
Network connector  
银色 Silver



B118-7  
网络连接器  
Network connector  
黑色 Black

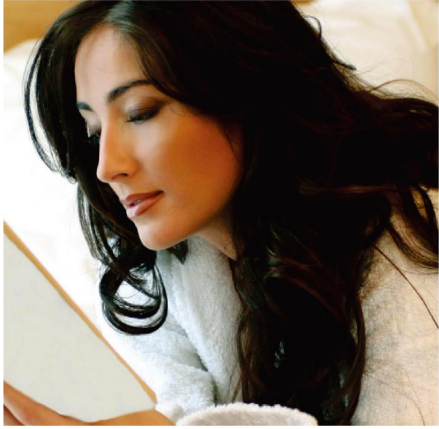


B118-8  
网络连接器  
Network connector  
白色 White



NETWORK CONNECTOR





PLAYERS WITH CLOCK



B119-1  
多功能播放器  
Ipod/iphone/mp3/radio



B119-2  
多功能播放器  
Ipod/iphone/mp3/radio



B119-2  
多功能播放器  
Ipod/iphone5/mp3/radio



B120-4  
多功能播放器  
Ipod/iphone5/mp3/radio



B120-1  
多功能播放器  
Ipod/iphone5/mp3/radio



B120-3  
多功能播放器  
Ipod/iphone5/mp3/radio



B119-3  
原木蓝牙充电闹钟音箱  
Wooden bluetooth alarm clock  
speaker wireless power for mobile



B119-4  
多功能播放器  
Ipod/iphone5/mp3/radio



B120-5  
多功能播放器  
Ipod/iphone5/mp3/radio



B119-5  
多功能播放器  
Ipod/iphone5/mp3/radio



B119-6  
多功能收音机  
Radio



B119-6  
多功能播放器  
Ipod/iphone5/mp3/radio



B119-7  
多功能播放器  
Ipod/iphone5/mp3/radio



B120-7  
多功能播放器  
Ipod/iphone5/mp3/radio



播放器/数字闹钟系列  
Media players/digital clocks series

电子闹钟收音机播放器  
Ipod / Iphone

外观时尚，金属质感强烈，功能齐备，一键操作内置收音功能，可为Ipod/Iphone充电，也可作外接音箱使用具有闹钟功能，为您的行程精准提醒

Ipod/Iphone speaker system with alarm clock and fm radio  
Features

Digital alarm clock Radio receiver system Ipod/Iphone docking station Ipod/Iphone charger



# FOLDING HAIRDRYER



**B121-1**  
电吹风  
Hair dryer  
220-240v / 1200w  
50ZH / CE / CCC  
黑色 Black



**B121-2**  
电吹风  
Hair dryer  
220-240v / 1600w  
50ZH / CE / CCC  
蓝银 Blue with silver



**B121-3**  
电吹风  
Hair dryer  
220-240v / 1200w  
50ZH / CE / CCC  
黑银 Black with silver



**B121-4**  
电吹风  
Hair dryer  
220-240v / 1600w  
50ZH / CE / CCC  
灰色 Gray



**B121-5**  
电吹风 Hair dryer  
220-240v / 1600w  
50ZH / CE / CCC  
棕色 Brown



**B121-6**  
电吹风 Hair dryer  
220-240v / 1600w  
50ZH / CE / CCC  
黑色 Black



**B121-7**  
电吹风  
Hairdryer  
220v/1200w/50Hz



**B121-8**  
电吹风  
Hairdryer  
220v/1200w/50Hz



**B122-1**  
电吹风  
Hairdryer  
1000w/220v  
3C/CE  
黑色/白色 Black/White



**B122-2**  
电吹风  
Hairdryer  
16.3x9.2x21.2cm  
1000w/220v  
3C/CE  
米色 White



**B122-3**  
电吹风  
Hairdryer  
21x9.5x18.5cm  
1000w/220v  
3C/CE  
米色 White

## FOLDING HAIR DRYER



**B122-4**  
电吹风  
Hairdryer  
18x8x21.5cm  
1000w/220v  
3C/CE  
米色 White



**B122-7**  
电吹风  
Hairdryer  
18.3x7.6x22.4cm  
1600w/220v  
冷热风切换Hot and cold wind switch  
3C/CE  
黑色/米色 Black/White



**B122-8**  
电吹风  
Hairdryer  
22x8.7x21.5cm  
1250w/220v  
冷热风切换  
Hot and cold wind switch  
3C/CE  
黑色/米色 Black/White



**B122-5**  
电吹风  
Hairdryer  
18x8x21.5cm  
1000w/220v  
3C/CE  
米色 White



**B122-9**  
电吹风  
Hairdryer  
220v/1500w/50Hz  
冷风三档切换  
Cold wind switch  
黑色/米色 Black/White



**B122-10**  
电吹风  
Hairdryer  
12x8x21cm  
220v/1200w/50Hz  
冷热风切换  
Hot and cold wind switch  
3C/CE  
黑色 Black

## WALL MOUNTED HAIR DRYER



**B122-6**  
电吹风  
Hairdryer  
21x9.5x18.5cm  
1000w/220v  
3C/CE  
米色/黑色 Black/White



**B122-11**  
电吹风  
Hairdryer  
18.3x7.6x22.4cm  
1250w/220v  
冷热风切换  
Hot and cold wind switch  
3C/CE  
黑色/米色 Black/White



**B122-12**  
电吹风  
Hairdryer  
22x8.7x21.5cm  
1875w/220v  
冷热风切换  
Hot and cold wind switch  
3C/CE  
黑色/米色/银色 Black/White/Silver

## FOLDING HAIR DRYER



**B123-1**  
电吹风  
Hairdryer  
220v/1600w  
Brand:PHILIPS



**B123-2**  
电吹风  
Hairdryer  
220v/1600w/50-60Hz  
Brand:VS



**B123-3**  
电吹风  
Hairdryer  
120-230v/600-1200w  
Brand:WIK



**B123-4**  
电吹风  
Hairdryer  
220v/1600w/50-60Hz  
Brand:VS



**B123-5**  
电吹风  
Hairdryer  
220v/1600w/50-60Hz  
Brand:VS



**B123-6**  
电吹风  
Hairdryer  
220v/1600w/50-60Hz  
Brand:VS

SMART  
TELEPHONE

**B124-1**  
电话机  
Bedroom telephone  
米白+灰色  
White+Gray



**B124-2**  
电话机  
Bedroom telephone  
黑色 Black



**B124-3**  
浴室电话机  
Bathroom telephone  
米色 White





BEDROOM TELEPHONE

采用“轻触按键”，按触轻快，手感舒适，稳定性强;外观设计新颖、时尚，极具现代感;带“一键通”速拨键(3-10)与留言提取功能;免提电路采用IC，2米内免提清晰通话，适用高端酒店。

"Adopted" light touch buttons, press touch light, comfortable, strong stability; Appearance design is novel, fashion, has contemporary feeling extremely; With "one key" speed dial keys (3 ~ 10) and message extraction function; Hands-free circuit adopts IC, clear hands-free calls within 2 meters, suitable for high-end hotels.



**B125-1**  
电话机  
Bedroom telephone  
黑色/银色 Black / Silver



**B125-2**  
电话机  
Bedroom telephone  
黑色 Black



**B125-3**  
电话机  
Bedroom telephone  
黑色 Black



**B125-4**  
电话机  
Bedroom telephone  
黑色/银色 Black / Silver



**B125-5**  
电话机  
Bedroom telephone  
黑色 Black



**B125-6**  
电话机  
Bedroom telephone  
黑色 Black



BATHROOM TELEPHONE



**B126-1**  
电话机  
Bedroom telephone  
23.7x16.5x8.2cm  
24-60v  
黑色/白色 Black/White



**B126-2**  
电话机  
Bedroom telephone  
23.8x17x9.5cm  
24-60v  
黑色/白色 Black/White



**B126-3**  
电话机  
Bedroom telephone  
22x16x8.5cm  
24-60v  
黑色/白色 Black/White



**B126-4**  
电话机  
Bedroom telephone  
22.7x16x9.5cm  
24-60v  
黑色/白色 Black/White



**B126-5**  
浴室电话机  
Bathroom telephone  
22.5x6.6x6.6cm  
24-60v  
米色 White



**B126-6**  
浴室电话机  
Bathroom telephone  
22.5x6.6x6.6cm  
24-60v  
米色 White



## BEDROOM TELEPHONE

一键通：0-10个快捷服务键  
 留言灯：高低压全制式留言灯，且按键可直接听取留言  
 免提功能：清晰免提通话效果，免提音量四级可调  
 闪断转接：闪断时间100/300/600ms可调，配合各种交换机实现转接功能  
 保留：具有保留和保留音乐，保留可由分机解除  
 铃声：柔和悦耳，铃声音量大小可调节  
 快捷键号码存储：采用EPROM2芯片记忆，长时间掉电不掉码  
 重拨：具有重拨功能

A key: key 0 to 10 and quick service  
 Message light: high and low voltage system message all lights, and button can be directly to listen to a message  
 Hands-free function: clear hands-free calls effect, hands-free volume level 4 is adjustable  
 Flash off time, failure \ transfer: 100/300/600 ms is adjustable, cooperate with each kind of switch switching functions  
 Keep: music has retained and retention, reserves can be released from the extension  
 Bell: soft and melodious bell volume can be adjusted  
 Shortcuts number storage: use EPROM2 memory chips, long time power lost not to drop code  
 Redial: with functions of redial



**B127-1**  
 电话机  
 Bedroom telephone  
 黑色/白色 Black/White



**B127-2**  
 电话机  
 Bedroom telephone  
 黑色/白色 Black/White



**B127-3**  
 电话机  
 Bedroom telephone  
 黑色/白色 Black/White



**B127-4**  
 浴室电话机  
 Bathroom telephone  
 黑色/白色 Black/White



**B128-1**  
 电话机  
 Bedroom telephone  
 黑色/白色 Black/White



**B128-2**  
 电话机  
 Bedroom telephone  
 黑色/白色 Black/White



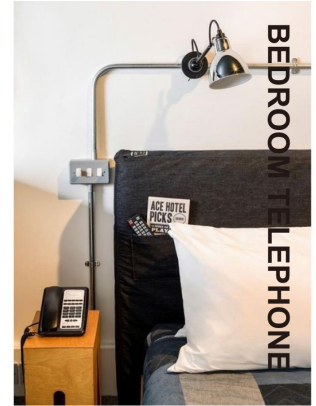
**B128-3**  
 电话机  
 Bedroom telephone  
 黑色/白色 Black/White



**B128-4**  
 电话机  
 Bedroom telephone  
 黑色/白色 Black/White



**B128-6**  
 浴室电话机  
 Bathroom telephone  
 黑色/白色 Black/White



酒店电话机经典外形，流线外形、精致、典雅，线条符合大众型审美观。可定制清晰的清晰大面板。  
 塑胶外壳采用进口ABS材料，耐磨耐摔加防紫外线。  
 耐用不变色机芯板采用双面贴片玻纤板，防潮阻燃抗氧化。  
 元器件采用进口SMT贴片元器件。  
 使用优质听筒曲线，线绳长且回弹性能强，不易打结打折。  
 使用镀金接插件，防止氧化致接触不良。

Hotel telephone classic appearance, streamline appearance, exquisite, elegant, line is popular type of aesthetics Customizable clear panel.  
 Fastness, with imported ABS plastic shell material, and add uv and.  
 Durable don't change color machine core board adopts double patch glass fiber board, moistureproof flame retardant antioxidant.  
 Imported SMT components, components.  
 Using high quality receiver curve, cord length and resilience to is strong, not easy to play screw at a discount.  
 Using gold plated connectors, prevent oxidation caused by poor contact.

## BEDROOM TELEPHONE

壁挂、台式及线电话机，多种功能与特色操作方便，多达十个可编程一个按键的速拨功能就能显示“灯键合一”的技术，信息灯兼备提取留言功能近距离超强抗电磁干扰闪断时间可调响铃音量可编程调节重拨、保留、静音、闪断功能

Hanging, desktop and telephone line, a variety of functions and features of easy operation, as many as ten programmable function of a speed dial button to display "the unity of" light key technology, information function and extracting message lamp close strong resistance to electromagnetic interference failure time adjustable ring ring tone of programmable control redial, retain, mute, the failure function



**B129-6**  
客房无线电话机  
Bedroom radio telephone  
黑色 Black



**B129-7**  
电话机  
Bedroom telephone  
黑色 Black



**B129-8**  
电话机  
Bedroom telephone  
黑色+红色 Black+Red



**B129-9**  
客房无线电话机  
bedroom radio telephone  
黑色+银色 Black+Silver



**B129-10**  
电话机  
Bedroom telephone  
黑色+银色 Black+Silver



**B129-11**  
电话机  
Bedroom telephone  
黑色+银色 Black+Silver



**B129-1**  
客房无线电话机  
Bedroom radio telephone  
黑色 Black



**B129-2**  
客房无线电话机  
Bedroom radio telephone  
黑色+银色 Black+Silver



**B129-3**  
浴室电话机  
Bathroom telephone  
黑色 Black



**B129-4**  
浴室电话机  
Bathroom telephone  
银色 Silver



**B129-5**  
浴室电话机  
Bathroom telephone  
米色 White



**B130-1**  
电话机  
Bedroom telephone  
黑色 Black



**B130-2**  
电话机  
Bedroom telephone  
黑色 Black



**B130-3**  
电话机  
Bedroom telephone  
黑色 Black



**B130-4**  
电话机  
Bedroom telephone  
黑色 Black



**B130-5**  
电话机  
Bedroom telephone  
黑色 Black

## BEDROOM TELEPHONE



BEDROOM SAFE



**B131-1**  
刷卡式密码箱  
Electronic password boxes  
45x40x20cm  
14kg  
米色



**B131-2**  
电子密码箱  
Electronic password boxes  
40x35x20cm  
12kg  
灰色/米色



**B131-3**  
电子密码箱  
Electronic password boxes  
40x34x22cm  
14kg  
灰色/米色



**B131-4**  
电子密码箱  
Electronic password boxes  
43x37x19.5cm  
12kg  
灰色/米色



**B131-5**  
电子密码箱  
Electronic password boxes  
43x37x19.5cm  
12kg  
灰色/米色



**B131-6**  
电子密码箱  
Electronic password boxes  
45x40x20cm  
14kg  
黑色



**B131-7**  
电子密码箱  
Electronic password boxes  
45x40x20cm  
14kg  
灰蓝色



**B132-1**  
电子密码箱  
Electronic password boxes  
34x37x14.5cm  
17.5kg  
黑色/米色



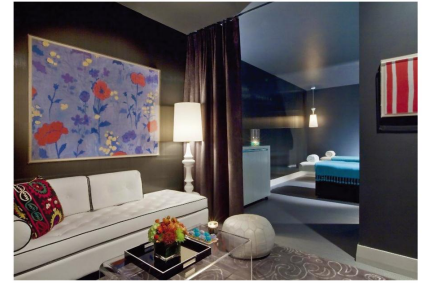
**B132-2**  
电子密码箱  
Electronic password boxes  
43x35x23cm  
17.5kg  
黑色/米色



**B132-3**  
电子密码箱  
Electronic password boxes  
43x235x23cm  
17.5kg  
黑色/米色



**B132-4**  
电子密码箱  
Electronic password boxes  
43x35x23cm  
17.5kg  
黑色/米色



**B132-5**  
电子密码箱  
Electronic password boxes  
42x37x20cm  
13kg  
黑色/米色



**B132-6**  
电子密码箱  
Electronic password boxes  
42x37x20cm  
13kg  
灰色/米色



**B132-7**  
电子密码箱  
Electronic password boxes  
42x37x20cm  
11kg  
35x25x25cm  
9kg  
30x20x20cm  
7kg  
灰色/米色

BEDROOM SAFE

## BEDROOM SAFE



**B133-1**  
电子密码箱  
Electronic safe  
47.5x61.6x19.5cm  
15kg  
红色 Red



**B133-2**  
电子密码箱  
Electronic safe  
42x37x20cm  
10.7kg  
黑色/米色 Black / white



**B133-3**  
电子密码箱  
Electronic safe  
42x37x20cm  
10.7kg  
黑色/米色 Black / white



**B133-4**  
电子密码箱  
Electronic safe  
44.5x38x20cm  
14kg  
灰色 Gray

## OFFICE SAFE



**B133-5**  
电子密码箱  
Electronic password boxes  
61.6x35x50cm  
31kg  
灰色 Gray

## HOSTING ARK



**B133-6**  
托警箱  
Hosting ark  
90x60x40cm

Front Office Safes Features:  
Made of high density stainless steel plate, beautiful fashion, spraying the surface smooth and delicate. The key pair, simple operation, high durability, high safety. Can be customized according to customer requirements.



**B134-1**  
客房小冰箱  
Guest room mini-bar  
新型二代吸收式制冷机芯 智能自动除霜系统  
节能电子温度控制系统  
带停机功能简易操作温控器  
磁感应（非机械式）内置LED照明灯  
豪华钢化玻璃层架（带防饮料滑落）X 1  
可更换左/右开门方向  
100%环保无害化材料

Standard Feature  
Innovative II generation cooling system  
Intelligent automatic defrost system  
Energy-saving & frost-free electronic thermostat system  
Easy-controlled thermal regulator for convenient adjustment with OFF function  
Door controlled LED light (magnet sensor) Strong deluxe tempered glass shelf with stoppers X 1  
Reversible door opening direction  
100% green & HSF (Hazardous Substances Free)

30L  
220-240V / 100-110V 70W  
4-6C / 7-9C  
40X41X50cm  
15kg



**B134-2**  
客房小冰箱  
Guest room mini-bar  
三层钢化玻璃门结构，抽真空并灌注氢气  
新型二代吸收式制冷机芯  
智能自动除霜系统  
节能电子温度控制系统  
带停机功能简易操作温控器  
磁感应（非机械式）内置LED照明灯  
豪华钢化玻璃层架（带防饮料滑落）X 2  
可更换左/右开门方向  
100%环保无害化材料

Standard Feature  
Three-layer tempered glass door structure with argon gas-filled Innovative II generation cooling system  
Intelligent automatic defrost system  
Energy-saving & frost-free electronic thermostat system  
Easy-controlled thermal regulator for convenient adjustment with OFF function  
Door controlled LED light (magnet sensor) Strong deluxe tempered glass shelf with stoppers X 2  
Reversible door opening direction  
100% green & HSF (Hazardous Substances Free)

40L  
220-240V / 100-110V 70W  
4-6C / 7-9C  
40X44X56cm  
22kg



## GUEST ROOM MINI-BAR



## GUEST ROOM MINI-BAR



**B135-1**  
客房小冰箱  
Guest room mini-bar

半导体制冷技术  
无氟利昂, 无制冷剂, 真正绿色环保  
40 L  
-3° C (环境温度25° C)  
220-240V/50Hz 或 110-120V/60Hz  
70W  
40.5 x 44.3 x 54.5 cm  
13.2kg  
加锁/滑动铰/玻璃门



**B135-2**  
客房小冰箱  
Guest room mini-bar

半导体制冷技术  
无氟利昂, 无制冷剂, 真正绿色环保  
40 L  
-3° C (环境温度25° C)  
220-240V/50Hz 或 110-120V/60Hz  
70W  
40.5 x 44.3 x 54.5 cm  
13.2kg  
加锁/滑动铰/玻璃门



**B135-3**  
客房小冰箱  
Guest room mini-bar

半导体制冷技术  
无氟利昂, 无制冷剂, 真正绿色环保  
40 L  
-3° C (环境温度25° C)  
220-240V/50Hz 或 110-120V/60Hz  
70W  
40.5 x 44.3 x 54.5 cm  
13.2kg  
加锁/滑动铰/玻璃门



**B135-4**  
客房小冰箱  
Guest room mini-bar

半导体制冷技术  
无氟利昂, 无制冷剂, 真正绿色环保  
40 L  
-3° C (环境温度25° C)  
220-240V/50Hz 或 110-120V/60Hz  
70W  
40.5 x 44.3 x 54.5 cm  
13.2kg  
加锁/滑动铰/玻璃门



**B136-1 A/B**  
客房小冰箱 静音/无噪音  
Guest room mini-bar

半导体制冷技术  
无氟利昂, 无制冷剂, 真正绿色环保  
无噪音 无震动  
28 L  
5-8° C (环境温度25° C)  
220-240V/50Hz 或 110-120V/60Hz  
60W  
380 x 380 x 475 mm  
9.2kg  
可选: A加锁/B滑动铰/C玻璃门



**B136-2 A/B**  
客房小冰箱 静音/无噪音  
Guest room mini-bar

半导体制冷技术  
无氟利昂, 无制冷剂, 真正绿色环保  
无噪音 无震动  
40 L  
5-8° C (环境温度25° C)  
220-240V/50Hz 或 110-120V/60Hz  
65W  
380 x 445 x 475 mm  
11.2kg  
可选: A加锁/B滑动铰/C玻璃门

**B136-3 A/B**  
客房小冰箱 静音/无噪音  
Guest room mini-bar

半导体制冷技术  
无氟利昂, 无制冷剂, 真正绿色环保  
无噪音 无震动  
40 L  
5-8° C (环境温度25° C)  
220-240V/50Hz 或 110-120V/60Hz  
65W  
405 x 443 x 545 mm  
13.2kg  
可选: A加锁/B滑动铰/C玻璃门

## GUEST ROOM MINI-BAR

## REC WNE CABINET



**B136-4**

红酒柜  
Red wine ark  
28pcs / 70 L  
12-18° C (常口25° C)  
220-240V/50Hz 或 110-120V/60Hz  
63W  
430 x 520 x 740 mm  
21.5kg  
可选: A不锈钢门/蓝色LED灯  
S/S door / Blue LED lights



**B136-5**

红酒柜  
Red wine ark  
19pcs / 50 L  
5-18° C  
220-240V/50Hz 或 110-120V/60Hz  
60W  
475 x 435 x 515 mm  
15.6kg  
可选: A不锈钢门/蓝色LED灯  
S/S door / Blue LED lights



**B105-1**

A 电水壶  
Electric kettle  
1.0L  
230v/2000w  
水开时间: 4分钟45秒  
Water boiling time: 3 minutes 45 seconds  
壳光/砂光  
light/inferior smooth s/s  
Brand: WIK

B 电水壶托  
Electric Kettle tray  
42x26x1.8cm  
亚克力 Acrylic

C 玻璃水杯  
Glass  
ØX9.5cm

## ELECTRIC KETTLE

先进的电热压力系统, 味美醇香, 有益健康;  
高效能电磁泵, 保留咖啡的原质原味;  
三极独立式开关, 各个开关独立且职能明确, 操作简便;  
发泡仪管和蒸汽喷嘴, 根据个人口感选择加入不同量的泡沫, 风味独特;  
暖杯盘, 使用更省心, 使咖啡味道更纯美;  
分离式储水器, 方便操作, 省心省力;  
可拆除式盛水盘, 清洁卫生;  
电线收藏装置, 轻松保持工作区的整洁而有序。

Advanced electric pressure system, delicious fragrance, good health;  
Highly efficient electromagnetic pump, keep the hypostasis of coffee;  
Three independent type switch, switch functions of independent and clear, easy to operate;  
Foaming tube and the steam nozzle, choose according to personal taste to join different amount of foam, unique flavor;  
Warm plates, use more save worry, make coffee taste more pure;  
Separate storage device, convenient operation, easier then.  
Removable disk, water cleaning and hygiene;  
Wre collecting device, easy to keep neat and orderly work area.



**B138-1**  
咖啡机  
Coffee machine 230v/1050w  
黑色+银色 Black+Silver  
Brand: WIK



**B138-2**  
咖啡壶  
Coffeemaker  
220-240v/355-400w  
500mlx6杯cup  
烹制时间: 6分钟 cooking time: 6 minutes  
Brand: WIK



**B137-1**  
电水壶  
Electric kettle  
1.0L  
230v/2000w  
水开时间: 3分钟  
Water boiling time: 3 minutes  
壳光/砂光 light/inferior smooth s/s  
Brand: WIK



**B137-2**  
电水壶  
Electric kettle  
1.0L  
220-240v/2000w  
水开时间: 3分钟10秒  
Water boiling time: 3 minutes 10 seconds  
壳光 light stainless steel  
Brand: WIK



**B137-4**  
电水壶  
Electric kettle  
1.2L  
230v/2000w  
水开时间: 4分钟36秒  
Water boiling time: 4 minutes 36 seconds  
壳光 light stainless steel  
Brand: WIK



**B137-3**  
电水壶  
Electric kettle  
1.0L  
220-240v/2000w  
水开时间: 4分钟45秒  
Water boiling time: 4 minutes 45 seconds  
米色+紫色食用胶 White+purple plastic  
Brand: WIK



**B137-5**  
电水壶  
Electric kettle  
1.2L  
230v/2000w  
水开时间: 3分钟45秒  
Water boiling time: 3 minutes 45 seconds  
壳光 light stainless steel  
Brand: WIK



**B138-4**  
电水壶  
Electric kettle  
1.0L  
220-240v/1850-2200w  
水开时间: 3分钟10秒  
Water boiling time: 3 minutes 10 seconds  
白色食用胶 White plastic  
Brand: WIK



**B138-3**  
电水壶  
Electric kettle  
1.5L  
220-240v/1850-2200w  
水开时间: 4分钟45秒  
Water boiling time: 5 minutes 45 seconds  
砂光 inferior smooth s/s  
Brand: WIK



**B138-5**  
电水壶  
Electric kettle  
1.5L  
220-240v/1850-2200w  
水开时间: 4分钟45秒  
Water boiling time: 5 minutes 45 seconds  
砂光 inferior smooth s/s  
Brand: WIK



**B139-1A**  
电水壶  
Electric kettle  
1.2L  
220v/1500w  
3C/CE  
银色 Silver  
**B139-1B**  
电水壶托  
Electric kettle tray



**B139-2A**  
电水壶  
Electric kettle  
1.2L  
220v/1500w  
3C/CE  
黑色+砂钢 / 米色+砂钢  
Black/white+inferior smooth s/s  
**B139-2B**  
电水壶托  
Electric kettle tray



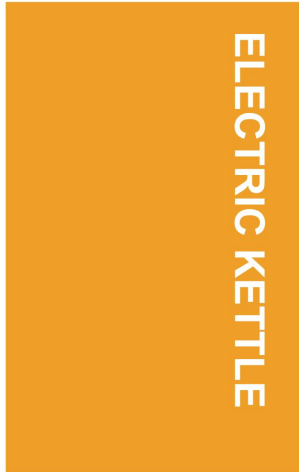
**B139-3**  
电水壶  
Electric kettle  
1.2L  
220v/1500w  
3C/CE  
砂光 inferior smooth s/s



**B139-4**  
电水壶  
Electric kettle  
1.2L  
220v/1500w  
3C/CE  
砂光 inferior smooth s/s



**B139-5**  
电水壶  
Electric kettle 1.0L  
220v/1000w  
3C/CE  
米色+紫色食用胶  
White+purple plastic



**B140-1**

- A 电水壶  
Electric kettle  
1.2L  
220v/1000w  
3C/CE
- B 白色/黑色 White/Black
- C 电水壶托  
Electric kettle tray  
40x30x22cm
- D 咖啡杯托  
Coffee cup tray  
32.5x13x2cm
- E 茶品盒  
Tea box  
13x10x4cm
- F 咖啡杯  
Coffee cup



**B140-2**

- A 电水壶  
Electric kettle  
1.2L  
220v/1500w  
3C/CE
- B 砂光 inferior smooth s/s
- C 电水壶托  
Electric kettle tray  
40x30x22cm
- D 茶品盒  
Tea box  
13x10x4cm



**B140-3**

- 保温水壶  
Thermal insulation kettle  
1.8L  
自动加热和保温，可以直流电控制地2段出水开关，童锁  
Automatic heating and heat preservation  
Can direct current (dc) 2 section to control water swit  
Child lock





**B141-1**

- A** 电水壶  
Electric kettle  
0.8L  
220v/1000w  
黑色/白色  
Black/white
- B** 电水壶托  
Electric kettle tray  
39.5x29x2.4cm  
黑色/白色  
Black/white
- C** 咖啡杯托  
Coffee cup tray  
34.5x13.8x2cm  
黑色/白色  
Black/white
- D** 茶品盒  
Tea box  
18x14.3x5cm  
黑色/白色  
Black/white



**B141-3**

- A** 电水壶  
Electric kettle  
0.8L  
220v/1000w  
黑色/白色  
Black/white
- B** 电水壶托  
Electric kettle tray  
39.5x29x2.4cm  
黑色/白色  
Black/white
- C** 咖啡杯托  
Coffee cup tray  
34.5x13.8x2cm  
黑色/白色  
Black/white
- D** 茶品盒  
Tea box  
18x14.3x5cm  
黑色/白色  
Black/white



**B141-5**

- A** 双层电水壶  
Double electric kettle  
0.8L  
220v/1000w  
3C/CE  
米色 White
- B** 电水壶托  
Electric kettle tray  
38.5x30.8x22.5cm  
黑色/白色 Black/white
- C** 咖啡杯托  
Coffee cup tray  
33.5x11.2x1.1cm  
黑色/白色 Black/white
- D** 茶品盒  
Tea box  
15.5x11.5x5cm  
黑色/白色 Black/white



**B141-2**

- A** 电水壶托  
Electric kettle tray  
42x35x2.6cm  
220v/1500w  
亮钢 light stainless steel
- B** 电水壶托  
Electric kettle tray  
42x35x2.6cm  
亮钢 light stainless steel
- C** 茶品盒  
Tea box  
18x14.3x5cm  
黑色/白色 Black/white
- D** 咖啡杯  
Coffee cup



**B141-4**

- A** 电水壶  
Electric kettle  
1.2L  
220v/1350w  
3C/CE  
亮钢/砂光  
light/inferior smooth s/s
- B** 咖啡杯托  
Coffee cup tray  
33.5x13.2x1.1cm  
黑色/白色 Black/white
- C** 电水壶托  
Electric kettle tray  
38.5x30.8x22.5cm  
黑色/白色 Black/white
- D** 茶品盒  
Tea box  
15.5x11.5x5cm  
黑色/白色 Black/white
- F** 咖啡杯  
Coffee cup



**B141-6**

- A** 电水壶  
Electric kettle  
1.2L  
220v/1500w  
黑色/白色 Black/white



- B142-1A**  
电水壶  
Electric kettle  
1.0L  
220v/1000w/50Hz  
亮钢/砂光 light/inferior smooth s/s
- B142-1B**  
木质电水壶托  
Wood electric kettle tray



- B142-2B**  
电水壶托  
Electric kettle tray
- B142-2A**  
电水壶  
Electric kettle  
1.2L  
220v/1200w/50Hz  
砂光 inferior smooth s/s



**B142-3**

- A** 电水壶  
Electric kettle  
1.2L  
220v/1000w/50Hz  
3C/CE  
黑色/白色  
Black/white



**B142-4**

- A** 电水壶  
Electric kettle  
1.0L  
220v/1000w/50Hz  
白色  
white



**B142-5**

- A** 电水壶  
Electric kettle  
1.0L  
220v/1000w/50Hz  
亮钢/砂光  
light/inferior smooth s/s



**B142-6**

- A** 电水壶  
Electric kettle  
1.2L  
220v/1000w  
亮钢/砂光 light/inferior smooth s/s



**B142-7**

- A** 电水壶  
Electric kettle  
1.2L  
220v/1000w/50Hz  
亮钢  
light stainless steel







# COFFEE MACHINE



**B143-1**  
红色/绿色 胶囊咖啡机  
Coffee Capsule Machine  
220-240V  
50Hz  
1250-1450W  
组合式咖啡胶囊回收盒,便于  
清洗2种机器喷嘴风格选择



**B143-2**  
胶囊咖啡机  
Coffee capsules machine



**B143-3**  
咖啡机  
Coffee machine



**B143-4**  
咖啡机  
Coffee machine 220-240v/650w  
0.6litri-6杯cup  
黑色 Black  
Brand: PHILIPS

- A  米兰浓  
Short Milano
  - B  弥之星海  
Mera Ocean
  - C  罗马假日  
Roma Romanc
  - D  蒙地卡罗  
Mnte Carlo
- B143-5**  
咖啡胶囊  
Coffee capsules



**B144-1**  
冲茶器  
Tea pot  
750ml  
13x20cm



**B144-9**  
玻璃茶杯  
Glass cup



**B144-6**  
玻璃茶壶  
Glass tea pot  
1200ml  
10x26.8cm



**B144-2**  
冲茶器  
Tea pot  
450ml  
13x17cm



**B144-10**  
玻璃茶杯  
Glass cup



**B144-7**  
玻璃凉水壶  
Glass pot  
1500ml  
10x27cm  
绿色盖 Green



**B144-3**  
冲茶器  
Tea pot  
10x16cm



**B144-11**  
玻璃茶杯  
Glass cup



**B144-8**  
玻璃凉水壶  
Glass pot  
1500ml  
10x27cm  
黑色盖 Black



**B144-4**  
不锈钢咖啡压榨壶  
Coffee pot



**B144-5**  
不锈钢咖啡压榨壶  
Coffee pot





**B145-1**  
优质不锈钢水果刀叉  
Stainless steel fruit knife and fork  
刀/Knife 21.5cm  
叉/fork 20.2cm



**B145-2**  
优质不锈钢水果刀叉  
Stainless steel fruit knife and fork  
刀/Knife 21.5cm  
叉/fork 20.2cm



**B145-3**  
优质不锈钢水果刀叉  
Stainless steel fruit knife and fork  
刀/Knife 21.9cm  
叉/fork 18.3cm



**B145-4**  
优质不锈钢水果刀叉  
Stainless steel fruit knife and fork  
刀/Knife 21cm  
叉/fork 18.1cm



**B145-5**  
优质不锈钢水果刀叉  
Stainless steel fruit knife and fork  
刀/Knife 21.5cm  
叉/fork 17.9cm



**B145-6**  
小吃架  
Snack plate  
15x12x16cm



**B145-7**  
双层小吃架  
Snack plate  
25x28cm



**B146-1**  
咖啡杯  
Coffee cup  
0.08L  
优质不锈钢  
Stainless steel



A 12.5cm



B 11.4cm



C 11.7cm



D 12.5cm



E 13.4cm



F 11cm

**B146-4**  
优质不锈钢咖啡更  
Stainless steel coffee spoon



**B146-2**  
陶瓷咖啡杯  
Ceramic coffee cup  
13.5x6.5cm



**B146-3**  
陶瓷咖啡杯  
Ceramic coffee cup  
13.5x6.5cm



**B146-5**  
红酒杯 Wine glass



**B146-6**  
红酒杯 Wine glass



**B146-7**  
红酒杯 Wine glass



**B146-8**  
水杯 Glass



**B146-9**  
水杯 Glass



**B146-10**  
茶杯/水杯  
Tea cup  
9x11cm



**B146-11**  
茶杯  
Tea cup  
7x10cm



**B146-12**  
茶杯/水杯  
Tea cup  
9x11.5cm



**B146-13**  
茶杯/水杯  
Tea cup  
7x11.5cm



**B146-14**  
茶杯/水杯  
Tea cup  
8x13cm



**B147-1**  
陶瓷茶具套装  
Tea utensils set 32x20x10cm



**B147-2**  
陶瓷茶具套装  
Tea utensils set 18.5x14.5x15cm



**B147-3**  
茶壶  
Tea pot 250ml  
12.5x7cm  
茶杯/水杯  
Tea pot 8.8x8cm  
茶盘托  
Tray 36x26x2.2cm



**B147-4**  
陶瓷茶具套装  
Tea utensils set 36x26x16cm



**B147-5**  
茶壶  
Tea pot 1200ml  
16x10.5cm



**B147-6**  
陶瓷茶具套装  
Tea utensils set  
一壶四杯  
one cup four cups



**B147-7**  
陶瓷茶具套装  
Tea utensils set  
一壶四杯  
one cup four cups



**B148-1**  
茶品盒  
Tea box 11x7.5cm



**B148-2**  
茶品盒  
Tea box 11x7.5cm



**B148-3**  
茶品盒  
Tea box 12x7.5cm



**B148-4**  
茶品盒  
Tea box 12x10.5cm



**B148-5**  
茶品盒  
Tea box 13x9.5cm



**B148-6**  
茶杯/水杯  
Tea cup 7.5x15cm



**B148-7**  
茶品盒  
Tea box 10x12cm



**B148-8**  
陶瓷茶具套装  
Tea utensils set  
34x24cm





**B149-1**  
冰桶  
Ice bucket  
1.2L  
优质不锈钢  
Stainless steel



**B149-2**  
冰桶  
Ice bucket  
1.2L  
优质不锈钢  
Stainless steel



**B149-3**  
冰桶  
Ice bucket  
0.9L  
不锈钢  
Stainless steel



**B149-4**  
冰桶  
Ice bucket  
1.2L  
优质不锈钢  
Stainless steel



**B149-5**  
冰桶  
Ice bucket  
1.2L  
柱状不锈钢  
Stainless steel



**B149-6**  
冰桶  
Ice bucket  
1.2L  
不锈钢  
Stainless steel



**B149-7**  
冰桶  
Ice bucket  
1.2L  
食用胶  
Plastic tank



**B149-8**  
酒桶  
Wine barrel  
12.5x12.5x22cm  
亚克力  
Acrylic



**B149-9**  
酒桶  
Wine barrel  
13.8x19.5cm  
优质不锈钢  
Stainless steel

ICE BUCKET



DRINKING UTENSILS



**B150-1**  
开瓶器  
Bottle opener



**B150-2**  
开瓶器  
Bottle opener



**B150-3**  
开瓶器  
Bottle opener



**B150-4**  
开瓶器  
Bottle opener



**B150-5**  
开瓶器  
Bottle opener



**B150-6**  
开瓶器  
Bottle opener



**B150-7**  
不锈钢冰夹  
Ice nip  
优质不锈钢  
13.1x2.5cm  
Stainless steel



**B150-8**  
保温壶  
Heat preservation pot  
1.0L  
16x12x20cm  
优质不锈钢  
Stainless steel



**B150-9**  
保温壶  
Heat preservation pot  
1.0L  
21x10x10cm  
优质不锈钢  
Stainless steel



**B150-10**  
保温壶  
Heat preservation pot  
1.0L  
13x13x22cm  
优质不锈钢  
Stainless steel



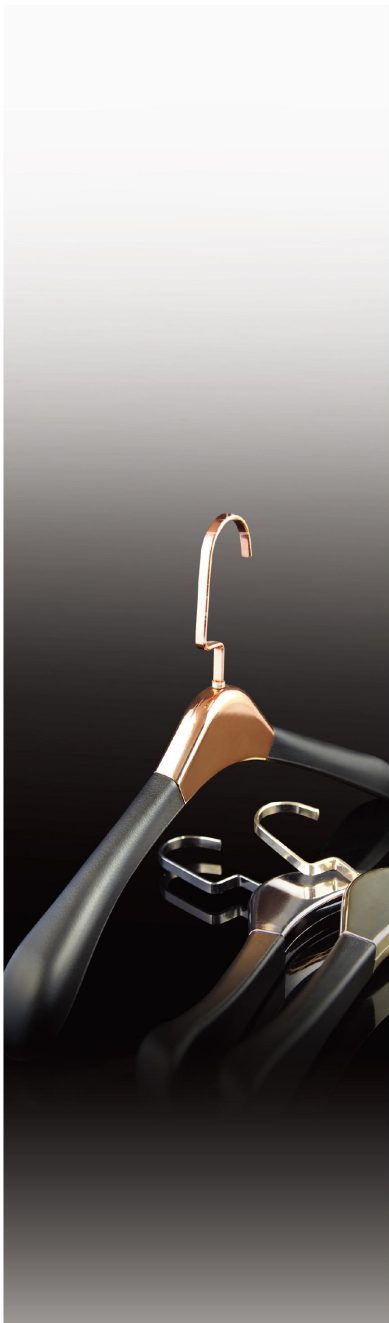
**B150-11**  
保温壶  
Heat preservation pot  
0.75L / 1.0L / 1.5L / 2.0L  
不锈钢  
Stainless steel



**B150-12**  
保温壶  
Heat preservation pot  
1.2L / 1.5L / 2.0L  
不锈钢  
Stainless steel



**B150-13**  
保温壶  
Heat preservation pot  
1.2L / 1.5L / 2.0L  
不锈钢  
Stainless steel



**B151-1**  
加强型西装衣架  
Suit hangers  
45x28cm



**B151-2**  
西装衣架  
Suit hangers  
45x28cm



**B151-3**  
西装衣架  
Suit hangers  
45x28cm



**B151-4**  
衬衣架  
Shirt hangers  
45x28cm



**B151-5**  
衬衣架  
Shirt hangers  
45x28cm



**B151-6**  
一字裤/裙夹  
Trousers/skirt clip  
33x15cm



**B151-7**  
一字裤/裙夹  
Trousers/skirt clip  
34x22cm

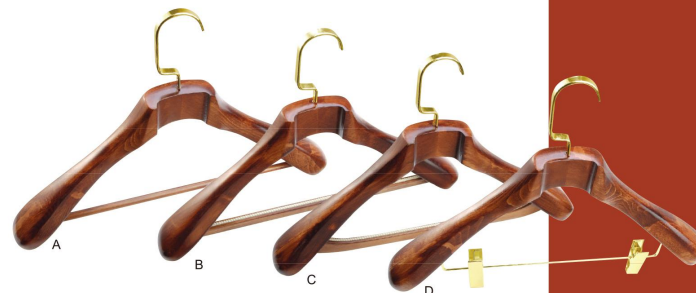


**B151-7**  
一字裤/裙夹  
Trousers/skirt clip  
34x21.5cm

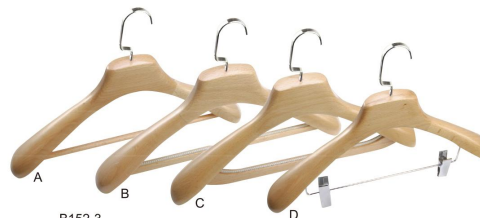
Colour



**B152-1**  
榉木豪华衣架  
LUXURE HANGER  
木色 Wooden color



**B152-2**  
榉木豪华衣架  
LUXURE HANGER  
熏色 Smoked color



**B152-3**  
榉木豪华衣架  
LUXURE HANGER  
木色 Wooden color



**B152-4**  
榉木豪华衣架  
LUXURE HANGER  
熏色 Smoked color

HANGER SERIES



**B153-1** 木色西装衣架  
Suit hangers  
44.5x4.8cm

**B153-2** 木色钢芯西装衣架  
Belt clip Suit hangers  
44.5x4.8cm

**B153-3** 木色钢芯加肩西装衣架  
Belt clip Suit hangers  
44.5x4.8cm

**B153-4** 木色衬衫衣架  
Shirt hangers  
44.5x1.6cm

**B153-5** 木色钢芯衬衫衣架  
Belt clip shirt hangers  
44.5x1.6cm

**B153-6** 木色一字裤/裙夹  
Trousers/skirt clip  
18x3cm



**B153-7** 一字裤/裙夹  
Trousers/skirt clip  
36x3cm



**B153-8** 红木色西装衣架  
Suit hangers  
44.5x4.8cm

**B153-9** 红木色钢芯西装衣架  
Belt clip Suit hangers  
44.5x4.8cm

**B153-10** 红木色钢芯加肩西装衣架  
Belt clip Suit hangers  
44.5x4.8cm



**B153-11** 红木色衬衫衣架  
Shirt hangers  
44.5x1.6cm

**B153-12** 红木色钢芯衬衫衣架  
Belt clip shirt hangers  
44.5x1.6cm

**B153-12** 红木色一字裤/裙夹  
Trousers/skirt clip  
18x3cm



**B154-1** 鞋抽  
Shoes pry  
51x3cm

**B154-2** 鞋抽  
Shoes pry  
38cm

**B154-3** 方头衣刷  
Clothes brush  
38cm

**B154-4** 圆头衣刷  
Clothes brush  
38cm



**B154-5** 双用衣刷  
Multifunctional clothes brush  
38cm



**B154-6** 鞋撑  
Shoe tree  
30cm



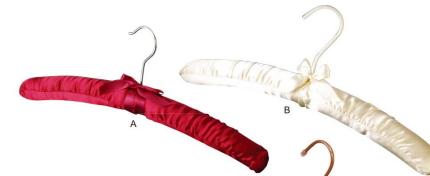
**B154-7** 鞋撑  
Shoe tree  
30cm



**B154-8** 领带夹  
Stickpin  
18x2cm



**B154-9** 领带夹  
Stickpin  
18.5x2cm



**B154-10** 丝袜衣架  
Silk hangers  
39x3.5cm







HANGER SERIES



**B155-1**  
落地衣架  
Clothes tree  
43.5x30x123cm



**B155-2**  
落地衣架  
Clothes tree  
43.5x30x123cm



**B155-3**  
落地衣架  
Clothes tree  
46.2x22x112cm



**B155-4**  
落地衣架  
Clothes tree  
47x140cm



**B155-5**  
落地衣架  
Clothes tree  
47x140cm



**B155-6**  
落地衣架  
Clothes tree  
47x140cm



**B155-7**  
落地衣架  
Clothes tree  
46x40x112cm



**B155-8**  
落地衣架  
Clothes tree  
46x35x116cm



**B155-9**  
落地衣架  
Clothes tree  
43x40x115cm



**B156-1**  
木质行李架  
Wooden luggage rack  
60x45x68cm



**B156-2**  
木质行李架  
Wooden luggage rack  
60x45x68cm



**B156-3**  
木质行李架  
Wooden luggage rack  
60x45x68cm



**B156-4**  
木质行李架  
Wooden luggage rack  
60x45x50cm



**B156-5**  
木质行李架  
Wooden luggage rack  
60x45x50cm



**B156-6**  
木质行李架  
Wooden luggage rack  
60x45x50cm



**B156-7**  
不锈钢行李架  
Stainless steel luggage rack  
60x50x68cm



**B156-8**  
不锈钢行李架  
Stainless steel luggage rack  
60x42x50cm



**B156-9**  
不锈钢行李架  
Stainless steel luggage rack  
50x40x50cm



**B156-10**  
木质行李架  
Wooden luggage rack  
60x45x68cm



**B156-11**  
木质行李架  
Wooden luggage rack  
60x46x52cm



**B156-12**  
金属行李架  
Painting luggage rack  
61x43x54cm



**B157-1**  
毛巾篮  
Towel basket  
竹制  
Bamboo  
45x30cm



**B157-2**  
毛巾篮  
Towel basket  
竹制  
Bamboo  
36x36x30cm



**B157-3**  
毛巾篮  
Towel basket  
竹制  
Bamboo  
36x25cm



**B157-4**  
毛巾篮  
Towel basket  
竹制  
Bamboo  
36x25cm



**B157-5**  
毛巾篮  
Towel basket  
藤制  
Rattan  
38x30x42cm



**B157-6**  
毛巾篮  
Towel basket  
藤制  
Rattan  
34x28x35cm



**B157-7**  
毛巾篮  
Towel basket  
仿藤  
PVC  
44x35x35cm



**B157-8**  
毛巾篮  
Towel basket  
仿藤  
Pvc  
47x27x39cm



**B157-9**  
毛巾篮  
Towel basket  
仿藤  
Pvc  
32x28x32cm



**B157-10**  
毛巾篮  
Towel basket  
仿藤  
Pvc  
33x34cm



**B157-11**  
毛巾篮  
Towel basket  
仿藤  
Pvc  
45x40cm



**B157-12**  
毛巾篮  
Towel basket  
仿藤  
Pvc  
45x27.5x42.5/55cm



**B158-1**  
鞋篮  
Shoes basket  
竹制  
Bamboo  
35x26x16cm



**B158-2**  
鞋篮  
Shoes basket  
竹制  
Bamboo  
35x26x16cm



**B158-3**  
鞋篮  
Shoes basket  
藤制  
Rattan  
38x30x19cm



**B158-4**  
衬衣篮  
Shirt basket  
仿藤  
PVC  
45x32x13cm



**B158-5**  
鞋篮  
Shoes basket  
仿藤  
PVC  
38x29x13cm



**B158-6**  
鞋篮  
Shoes basket  
仿藤  
PVC  
40x31x9cm



**B158-7**  
鞋篮  
Shoes basket  
仿藤  
Pvc  
36x26x9cm



**B158-8**  
鞋篮  
Shoes basket  
仿藤  
Pvc  
26x37x12cm



**B158-9**  
鞋篮  
Shoes basket  
仿藤  
Pvc  
36x26x9cm



**B158-10**  
鞋篮  
Shoes basket  
不锈钢  
Stainless steel  
30x38x11cm



**B158-11**  
鞋篮  
Shoes basket  
不锈钢  
Stainless steel  
30x38x11cm



**B158-12**  
毛巾篮  
Towel basket  
不锈钢  
Stainless steel  
35.5x36cm

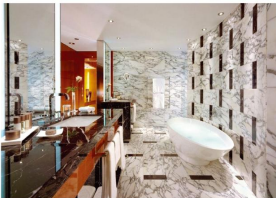


**B158-13**  
毛巾篮  
Towel basket  
不锈钢  
Stainless steel  
45x45cm



**B158-14**  
毛巾篮  
Towel basket  
不锈钢  
Stainless steel  
36x44cm

TOWEL BASKET SERIES  
SHOE BASKET SERIES  
TOWEL BASKET SHOES BASKET





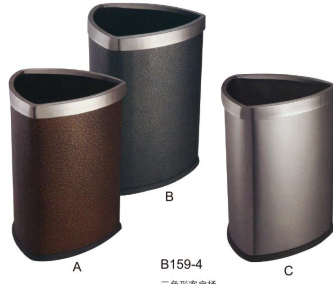
**B159-1**  
桶盖客房桶  
Room dustbin  
20x30cm



**B159-2**  
桶盖客房桶  
Room dustbin  
20x28cm



**B159-3**  
圆锥形分类客房桶  
Room dustbin  
22x30cm



**B159-4**  
三角形客房桶  
Room dustbin  
22x22x30cm



**B159-5**  
加高双层客房桶  
Room dustbin  
20x30cm



**B159-6**  
加高双层客房桶  
Room dustbin  
20x30cm



**B159-7**  
圆形单层客房桶  
Room dustbin  
20x30cm



**B159-8**  
圆形单层客房桶  
Room dustbin  
20x30cm



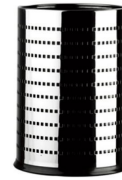
**B159-9**  
圆形单层客房桶  
Room dustbin  
20x30cm



**B160-1**  
圆形不锈钢冲孔  
客房桶  
Room dustbin  
21x28cm



**B160-2**  
方形不锈钢冲孔  
客房桶  
Room dustbin  
18x18x27cm



**B160-3**  
房间垃圾桶  
Room dustbin  
不锈钢  
Stainless steel  
20x30cm



**B160-4**  
房间垃圾桶  
Room dustbin  
不锈钢  
Stainless steel  
20x30cm



**B160-5**  
房间垃圾桶  
Room dustbin  
烤漆  
Painting  
23.5x16.5x27.5cm



**B160-6**  
浴室垃圾桶  
Bathroom dustbin  
烤漆  
Painting  
22x27cm



**B160-7**  
浴室垃圾桶  
Bathroom dustbin  
阻燃  
Fireproof material  
22x27cm



**B160-8**  
浴室垃圾桶  
Bathroom dustbin  
阻燃  
Fireproof material  
8L / 10L  
黑色/米色  
Black/White



**B160-9**  
浴室垃圾桶  
Bathroom dustbin  
阻燃  
Fireproof material  
8L / 10L  
黑色/米色  
Black/White



**B160-10**  
浴室垃圾桶  
Bathroom dustbin  
阻燃  
Fireproof material  
8L / 10L  
黑色/米色  
Black/White



BATHROOM DUSTBIN  
BEDROOM DUSTBIN