

# GLASS HARDWARE

2018年版



ADD: NO. 244, QING LAN ROAD, HIGH-NEW INDUSTRIAL PARK, JIANGMEN, GUANGDONG, CHINA.  
TEL: 0086-750-3410888 (50 LINES) FAX: 0086-750-3410838  
WEBSITE: <http://www.jmjiangyi.com> <http://www.jiangyihardware.com>  
EMAIL: [jiangyi@jmjiangyi.com](mailto:jiangyi@jmjiangyi.com)



# COMPANY PROFILE

## 公司简介



江门市江艺实业有限公司成立于1987年，自创立以来，一直致力于玻璃深加工工具和玻璃五金的生产和进出口贸易，在此行业中享有盛名。公司的发展从生产玻璃深加工砂轮、玻璃工具到玻璃五金，在江门拥有独立厂房，占地面积10万平方米。

经过多年的努力，公司现成为集研发、生产、销售为一体的综合性企业，产品畅销全国各地，并远销东南亚、中东、欧美等国家。公司本着“诚信经营、科学管理、互惠互利”的核心理念，以其专业的销售队伍，不遗余力地为客户提供专业指导及周到服务，愿与社会各界新老朋友携手共进，缔造双赢。

Jiangmen Jiangyi Industrial Co., Ltd. was established in 1987. Since its establishment, it has been committed to the production of glass grinding wheels, polishing wheels, glass tools to glass hardware, enjoying a good reputation in this industry. Our company develops from production of glass grinding wheels, polishing wheels, glass tools to glass hardware, with an independent factory in Jiangmen city with an area of 100 thousand square meters. After years of effort, we have become a comprehensive company that integrating R&D, manufacturing and sales. Our products are highly recognized by our customers all over the country and exported to Southeast Asia, Middle East, Europe, United States and other countries. Our tenet is "Integrity Management, Scientific Management, Mutual Benefit", with its professional sales team, spare no effort to provide customers with professional guidance and service. We are willing to work together with old and new friends from all walks of life to create a win-win situation.



VR全景视频



# S015

## TWO-WAY SLIDING DOOR

-   
**DOOR WHEEL**  
S015-1-4

  
**ANTI-DERAIL FITTING**  
S015-2-4
-   
**DOOR GUIDER**  
S015-3-1

  
**DOOR STOPPER**  
S15-4-8
-   
**DECORATIVE COVER**  
S015-5-4

  
**DOOR HANDLE**  
KA-S90-4
-   
**LEFT SIDE FRAME**  
S015-6-1

  
**RIGHT SIDE FRAME**  
S015-7-1
-   
**TOP RAIL**  
S015-8-1

  
**BOTTOM FRAME**  
S015-9-1





《《《 SLIDING DOOR



S001

-   
Sliding Door Roller  
Item No.: S002-1-2
-   
Glass To Track Bracket  
Item No.: S002-2-2
-   
L Track Bracket  
Item No.: S001-3-1
-   
Door Stoper  
Item No.: S001-5-2
-   
Door Guider  
Item No.: SLD-B-003
-   
Sliding Door Handle  
Item No.: KA-S90-4
-   
Wall To Track Bracket  
Item No.: S002-4-2
-   
30\*10mm Track  
Item No.: S002-8-1
-   
8mm Rod  
Item No.: 8mm Solid Rod

标准配置  
Standard Application



S002

-   
Sliding Door Roller  
Item No.: S002-1-2
-   
Glass To Track Bracket  
Item No.: S002-2-2
-   
Anti-Derail Fitting  
Item No.: S002-3-2
-   
Door Stoper  
Item No.: S002-5-2
-   
Wall To Track Bracket  
Item No.: S002-4-2
-   
Door Guider  
Item No.: SLD-B-003
-   
Sliding Door Handle  
Item No.: KA-S90-4
-   
30\*10mm Track  
Item No.: S002-8-1

标准配置  
Standard Application

《《《 SLIDING DOOR



S003

-   
Sliding Door Roller  
Item No.: S003-1-2
-   
Glass To Track Bracket  
Item No.: S004-3-4
-   
Wall To Track Bracket  
Item No.: S002-4-2
-   
Door Stoper  
Item No.: S002-5-2
-   
Door Guider  
Item No.: SLD-B-003
-   
Sliding Door Handle  
Item No.: KA-S90-4
-   
30\*10mm Track  
Item No.: S002-8-1

标准配置  
Standard Application



S005

-   
Sliding Door Roller  
Item No.: S005-1-4
-   
Glass To Track Bracket  
Item No.: S005-2-4
-   
Wall To Track Bracket  
Item No.: S005-3-2
-   
Door Stoper  
Item No.: S005-4-4
-   
Door Guider  
Item No.: SLD-B-003
-   
Sliding Door Handle  
Item No.: KA-S90-4
-   
L Track Bracket  
Item No.: S005-7-1
-   
25mm Round Track  
Item No.: 25mm Track
-   
8mm Rod  
Item No.: 8mm Solid Rod

标准配置  
Standard Application

《《《 SLIDING DOOR



S007



标准配置  
Standard Application



S011



标准配置  
Standard Application

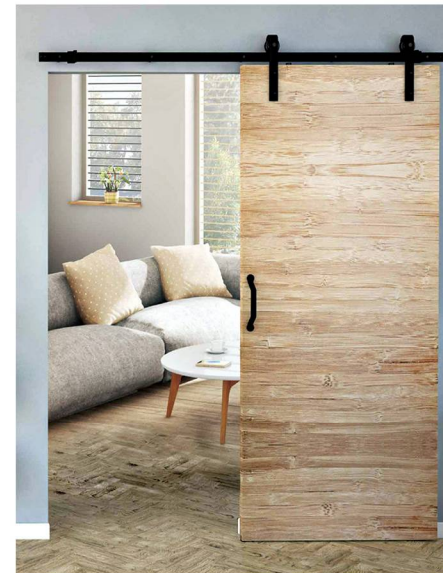
《《《 SLIDING DOOR



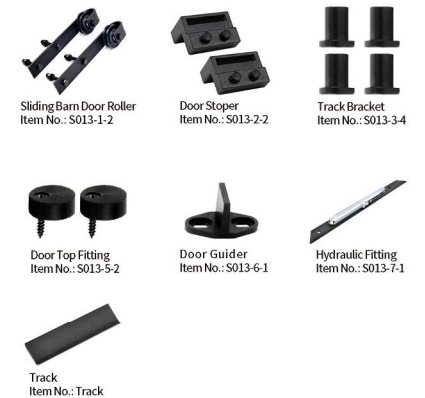
S012



标准配置  
Standard Application



S013



标准配置  
Standard Application





Sliding Door Roller  
Item No.: SLD-A-001



Glass To Track Bracket  
Item No.: SLD-A-003

OR



Wall To Track Bracket  
Item No.: SLD-A-002



Door Stopper  
Item No.: SLD-A-004L,R



Door Guide  
Item No.: SLD-B-003



Sliding Door Handle  
Item No.: SLH-02



Track Cap  
Item No.: SLD-A-007



25mm Round Track  
Item No.: 25mm Track

## SLD-a SET

标准配置  
Standard Application



Sliding Door Wheel

Item No.: SLD-A-001  
Material : SUS 304  
Surface : Satin / Polish



Sliding Door Wheel

Item No.: SLD-A-001P  
Material : SUS 304  
Surface : Satin / Polish



Sliding Door Wheel

Item No.: SLD-A-001S  
Material : SUS 304  
Surface : Satin / Polish



Sliding Door Wheel

Item No.: SLD-A-009  
Material : SUS 304  
Surface : Satin / Polish



Sliding Door Wheel

Item No.: SLD-B-001  
Material : SUS 304  
Surface : Satin / Polish



Wall To Track Bracket

Item No.: SLD-A-006  
Material : SUS 304  
Surface : Satin / Polish



Wall To Track Bracket

Item No.: SLD-A-002  
Material : SUS 304  
Surface : Satin / Polish



Glass To Track Bracket

Item No.: SLD-A-003  
Material : SUS 304  
Surface : Satin / Polish



Wall To Track Bracket

Item No.: SLD-A-002B  
Material : SUS 304  
Surface : Satin / Polish



Door Guide

Item No.: SLD-B-003  
Material : SUS 304  
Surface : Satin / Polish



Glass To Track Bracket

Item No.: SLD-A-003B  
Material : SUS 304  
Surface : Satin / Polish



Door Stopper

Item No.: SLD-A-001  
Material : SUS 304  
Surface : Satin / Polish

《《《《 SLIDING DOOR



**Door Stoper**  
Item No.: SLD-B-004  
Material: SUS 304  
Surface: Satin / Polish



**Door Stoper**  
Item No.: SLD-B-005  
Material: SUS 304  
Surface: Satin / Polish



**Track Cap**  
Item No.: SLD-A-007  
Material: SUS 304  
Surface: Satin / Polish



**Track Cap**  
Item No.: SLD-A-007B  
Material: SUS 304  
Surface: Satin / Polish



**Door Pull Handle**  
Item No.: KA-S90-4  
Material: SUS 304  
Surface: Satin / Polish



**Door Pull Handle**  
Item No.: S002-7-1  
Material: SUS 304  
Surface: Satin / Polish



**Door Pull Handle**  
Item No.: SLH-02  
Material: SUS 304  
Surface: Satin / Polish



**Door Pull Handle**  
Item No.: SLH-04  
Material: SUS 304  
Surface: Satin / Polish



**Door Pull Handle**  
Item No.: SLH-09  
Material: SUS 304  
Surface: Satin / Polish



**Round Track**  
Item No.: 19/25mm Round Track  
Material: SUS 304  
Surface: Satin / Polish



**Square Track**  
Item No.: 30\*10mm / 40\*15mm Track  
Material: SUS 304  
Surface: Satin / Polish



**Solid Rod**  
Item No.: 8mm Solid Rod  
Material: SUS 304  
Surface: Satin / Polish

《《《《 SLIDING DOOR



**Sliding door Roller**  
Item No.: S002-1-2  
Material: SUS304  
Surface: Satin/Polish



**Sliding door Roller**  
Item No.: S005-1-4  
Material: SUS304  
Surface: Satin/Polish



**Sliding door Roller**  
Item No.: S003-1-2  
Material: SUS304  
Surface: Satin/Polish



**Door Stoper**  
Item No.: S002-5-2  
Material: SUS304  
Surface: Satin/Polish



**Door Stoper**  
Item No.: S001-5-2  
Material: SUS304  
Surface: Satin/Polish



**Door Stoper**  
Item No.: S005-4-4  
Material: SUS304  
Surface: Satin/Polish



**Glass To Track Bracket**  
Item No.: S002-2-2  
Material: SUS304  
Surface: Satin/Polish



**Anti-Derail Fitting**  
Item No.: S002-3-2  
Material: SUS304  
Surface: Satin/Polish



**Wall To Track Bracket**  
Item No.: S002-4-2  
Material: SUS304  
Surface: Satin/Polish



**Glass To Track Bracket**  
Item No.: SLH-09  
Material: SUS 304  
Surface: Satin / Polish



**Door Guider**  
Item No.: SLD-B-003  
Material: SUS 304  
Surface: Satin/Polish



**Door Guider**  
Item No.: S011-6-1  
Material: SUS304  
Surface: Satin/Polish





Wall To Track Bracket  
Item No.: KA-07  
Material: SUS304  
Surface: Satin/Polish



L Track Bracket  
Item No.: S001-3-1  
Material: SUS304  
Surface: Satin/Polish



Support Bar Fitting  
Item No.: S011-8-1  
Material: SUS304  
Surface: Satin/Polish



L Track Bracket  
Item No.: S005-7-1  
Material: SUS304  
Surface: Satin/Polish



Wall To Track Bracket  
Item No.: S002-2-2B  
Material: SUS304  
Surface: Satin/Polish



Support Bar Fitting  
Item No.: S011-9-1  
Material: SUS304  
Surface: Satin/Polish

# SLIDING DOOR SERIES



SLD-W01 SET



SLD-F SET



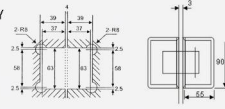
SLD-E SET



ALUMINUM TRACK

**SHOWER GLASS HINGE  
BEVELED PANEL**

MATERIAL: BRASS/ STAINLESS STEEL/ ZINC ALLOY  
SIZE: 90 X 55 MM  
FINISH: CHROME PLATED/ NICKEL PLATED/ SATIN  
(MATT)/ POLISHED  
SUITABLE FOR GLASS: 6-12 MM  
MAX. DOOR WEIGHT: 45 KGS  
AUTOMATICALLY CLOSE AT: 25°



SH-1-T1



SH-1-180



SH-1-135



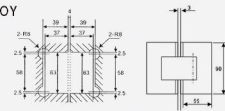
SH-1-T2



SH-1-L1

**SHOWER GLASS HINGE  
STRAIGHT PANEL**

MATERIAL: BRASS/ STAINLESS STEEL/ ZINC ALLOY  
SIZE: 90 X 55 MM  
FINISH: CHROME PLATED/ NICKEL PLATED/ SATIN  
(MATT)/ POLISHED  
SUITABLE FOR GLASS: 6-12 MM  
MAX. DOOR WEIGHT: 45 KGS  
AUTOMATICALLY CLOSE AT: 25°



SH-2-T1



SH-2-T2



SH-2-180



SH-2-135



SH-2-L1



SH-2-L1N



SH-2-T1N



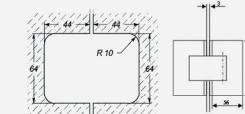
SH-2-135N



SH-2-T2N



SH-2-180N



MATERIAL: SOLID FULL BRASS  
SIZE: 92 X 56 MM  
GLASS CUT-OUT: SQUARE  
FINISH: CHROME PLATED/ NICKEL PLATED  
SUITABLE FOR GLASS: 6-12 MM

**SHOWER GLASS HINGE  
AUSTRALIAN MARKET**



SH-4-T1



SH-4-180



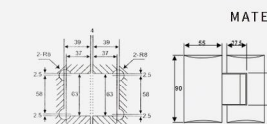
SH-4-135



SH-4-L1



SH-4-T2



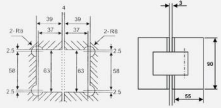
MATERIAL: BRASS/ STAINLESS STEEL/ ZINC ALLOY  
SIZE: 90 X 55 MM  
FINISH: CHROME PLATED/ NICKEL PLATED/ SATIN  
(MATT)/ POLISHED  
SUITABLE FOR GLASS: 6-12 MM  
MAX. DOOR WEIGHT: 45 KGS  
AUTOMATICALLY CLOSE AT: 25°

**SHOWER GLASS HINGE  
ARC PANEL**



## SHOWER GLASS HINGE ROUND ANGLE

MATERIAL: BRASS/ STAINLESS STEEL 304  
SIZE: 90 X 55 MM  
FINISH: CHROME PLATED/ NICKEL PLATED/ SATIN (MATT)/ POLISHED  
SUITABLE FOR GLASS: 6-12 MM  
MAX. DOOR WEIGHT: 45 KGS  
AUTOMATICALLY CLOSE AT: 25°



SH-8-T1



SH-11-T2



SH-11-180



SH-11-135



SH-11-L1



SH-8-T2



SH-8-180



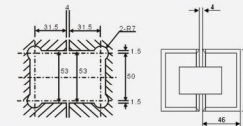
SH-8-135



SH-8-L1



SH-11-T1

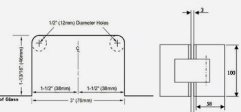


MATERIAL: BRASS  
SIZE: 75 X 46 MM  
FINISH: CHROME PLATED/ NICKEL PLATED  
SUITABLE FOR GLASS: 6-10 MM  
MAX. DOOR WEIGHT: 40 KGS  
AUTOMATICALLY CLOSE AT: 25°

## SMALL SHOWER HINGE

## CRL GLASS HINGE

MATERIAL: SOLID FULL BRASS  
SIZE: 100 X 58 MM  
PANEL THICKNESS: 6 MM  
GLASS CUT-OUT: SQUARE  
FINISH: CHROME PLATED/ NICKEL PLATED  
SUITABLE FOR GLASS: 6-12 MM



SH-2-T1CL



SH-22-T2



SH-22-180



SH-22-135



SH-22-L1



SH-2-T1CLH



SH-2-180CL



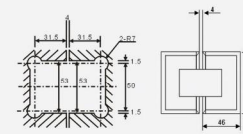
SH-2-135CL



SH-2-L1CL



SH-22-T1

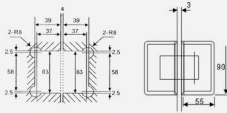


MATERIAL: BRASS  
SIZE: 75 X 46 MM  
FINISH: CHROME PLATED/ NICKEL PLATED  
SUITABLE FOR GLASS: 6-10 MM  
MAX. DOOR WEIGHT: 40 KGS  
AUTOMATICALLY CLOSE AT: 25°

## SMALL SHOWER HINGE

## ADJUSTABLE GLASS HINGE BEVELED PANEL

MATERIAL: BRASS  
SIZE: 90 X 55 MM  
FINISH: CHROME PLATED/ NICKEL PLATED  
SUITABLE FOR GLASS: 6-12 MM  
MAX. DOOR WEIGHT: 45 KGS  
AUTOMATICALLY CLOSE AT: 25°



SH-1-T1AD



SH-1-T2AD



SH-1-180AD



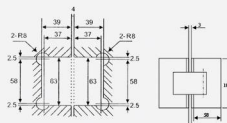
SH-1-135AD



SH-1-L1AD

## ADJUSTABLE GLASS HINGE STRAIGHT PANEL

MATERIAL: SOLID FULL BRASS  
SIZE: 100 X 58 MM  
PANEL THICKNESS: 6 MM  
GLASS CUT-OUT: SQUARE  
FINISH: CHROME PLATED/ NICKEL PLATED  
SUITABLE FOR GLASS: 6-12 MM



SH-2-T1AD



SH-2-T2AD



SH-2-180AD



SH-2-135AD



SH-2-L1AD



SH-4-T2AD



SH-4-180AD



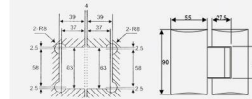
SH-4-135AD



SH-4-L1AD



SH-4-T1AD



MATERIAL: BRASS  
SIZE: 90 X 55 MM  
FINISH: CHROME PLATED/ NICKEL PLATED  
SUITABLE FOR GLASS: 6-12 MM  
MAX. DOOR WEIGHT: 45 KGS  
AUTOMATICALLY CLOSE AT: 25°

## ADJUSTABLE GLASS HINGE ARC PANEL



SH-8-T2AD



SH-8-180AD



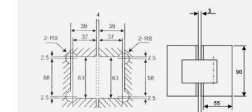
SH-8-135AD



SH-8-L1AD



SH-8-T1AD



MATERIAL: BRASS  
SIZE: 90 X 55 MM  
FINISH: CHROME PLATED/ NICKEL PLATED  
SUITABLE FOR GLASS: 6-12 MM  
MAX. DOOR WEIGHT: 45 KGS  
AUTOMATICALLY CLOSE AT: 25°

## ADJUSTABLE GLASS HINGE ROUND ANGLE PANEL





SH-7-51



SH-7-52



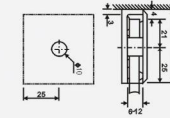
SH-7-53



SH-7-54



GC-00CD1



MATERIAL: BRASS/STAINLESS STEEL/ZINE ALLOY  
SIZE: 45 X 45MM/50 X 50MM  
FINISH: CHROME PLATED/ NICKEL PLATED/SATIN  
(MATT)/POLISHED  
SUITABLE FOR GLASS: 6-12 MM

SHOWER GLASS CLAMP



SH-6-11



SH-6-13



SH-7-45



SH-7-46



GC-00CD4



GC-00CD5



GC-90C



GC-90CD



SH-7-71



SH-7-72



SH-76



SH-7-85



GC-135C



GC-135CD



GC-180C



GC-180CD



GC-7-0



GC-7-0A



GC-7-90A



GC-7-90B



SH-5-360A



SH-5-360B



SH-1-T2 Antique Copper



SH-2-T1 Matte Black



GC-7-135A



GC-7-135B



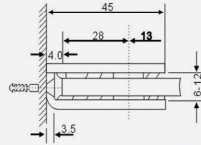
GC-7-180A



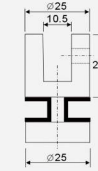
GC-7-180B

## SHOWER GLASS CLAMP

MATERIAL: BRASS/STAINLESS STEEL/ZINC ALLOY  
 SIZE: 45X45MM/50X50MM  
 FINISH: CHROME PLATED/ NICKEL PLATED/SATIN (MATT)/POLISHED  
 SUITABLE FOR GLASS: 6-12 MM



GC-2-0

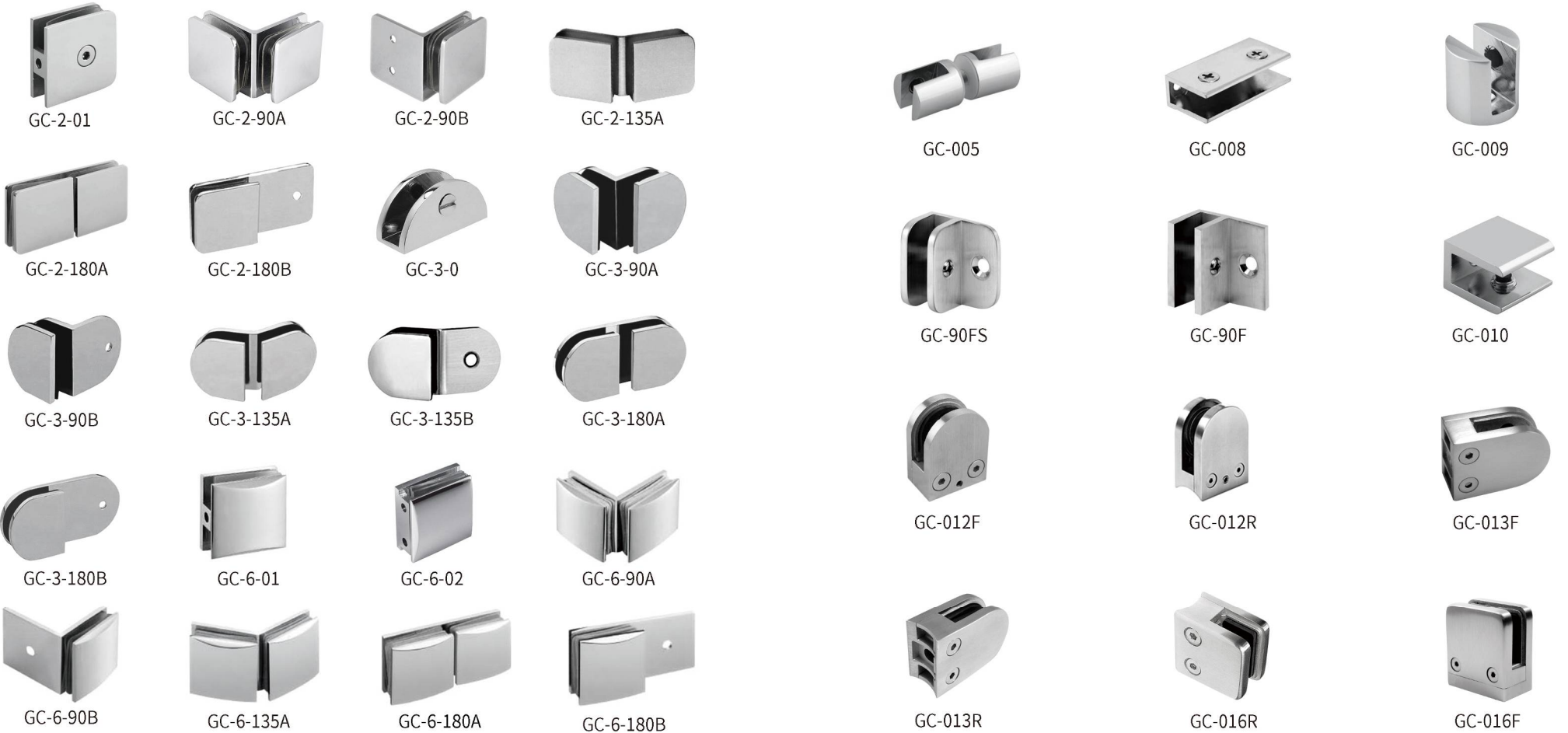


MATERIAL: BRASS/STAINLESS STEEL/ZINC ALLOY  
 DIAMETER: 25MM  
 FINISH: CHROME PLATED/ NICKEL PLATED/SATIN (MATT)/POLISHED  
 SUITABLE FOR GLASS: 8-10 MM



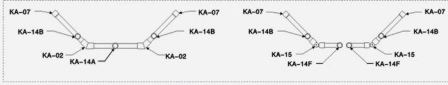
GC-004

## GLASS CLAMP

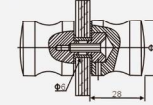


# SHOWER CONNECTOR

MATERIAL: BRASS/STAINLESS STEEL/ZINE ALLOY  
DIAMETER: 19MM/22MM/25MM  
FINISH: CHROME PLATED/ NICKEL  
PLATED/SATIN(MATT)/POLISHED



KA-07



MATERIAL: BRASS/STAINLESS STEEL/ZINE ALLOY  
SIZE: 28\*30MM  
FINISH: CHROME PLATED/ NICKEL  
PLATED/SATIN(MATT)/POLISHED

# SHOWER DOOR KNOB



SDK-12



SDK-13



SDK-14



SDK-15



SDK-16



SDK-17



SDK-19



SDK-215



SDK-221



SDK-238



SDK-211



SDK-235



SDK-230



SDK-226



KA-S90-4



SLH-02



SDK-01GL



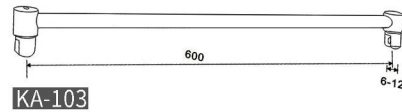
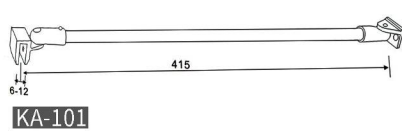
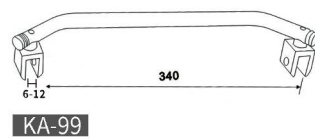
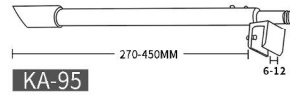
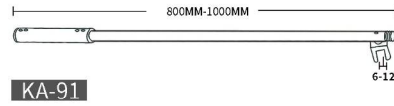
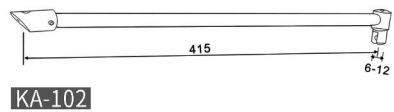
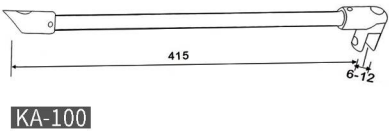
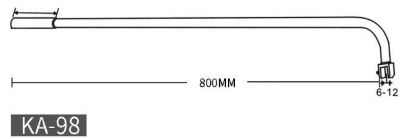
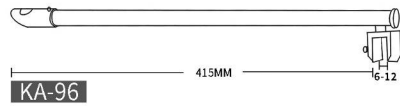
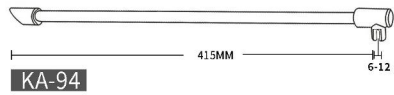
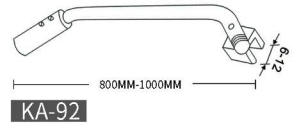
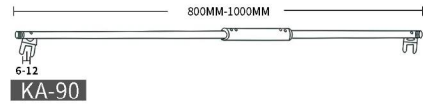
SDK-02GL



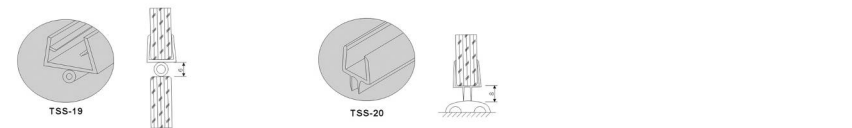
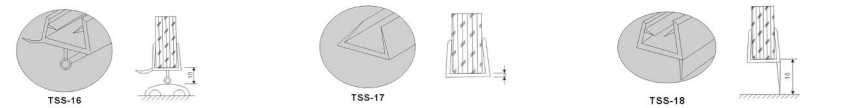
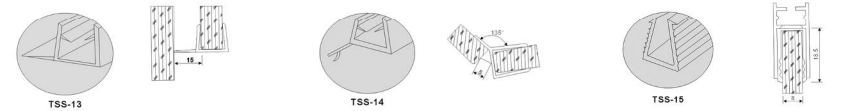
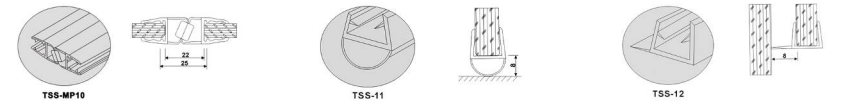
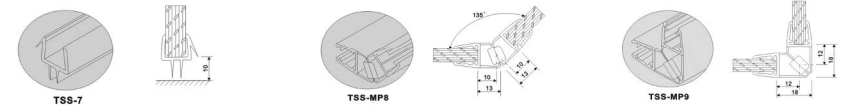
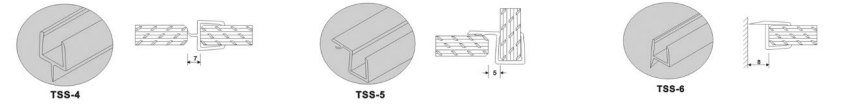
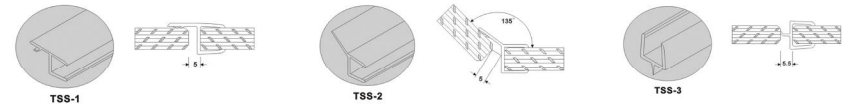
SDK-03GL



SHOWER RODS



SEALING STRIP



## DOOR HANDLE

MATERIAL: BRASS/STAINLESS STEEL  
TUBE DIAMETER: 19MM/25MM/32MM/38MM  
SIZE CAN BE CUSTOMIZED  
FINISH: CHROME PLATED/ NICKEL PLATED  
/SATIN(MATT)/POLISHED



GDH-02



GDH-10



GDH-163



GDH-105D



GDH-108-4



GDH-27



GDH-27R



GDH-27S



GDH-108R



GDH-108-1



GDH-108-3



GDH-108LS



GDH-108-6



GLDH-101S



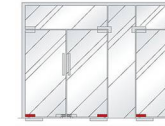
HDL-06

## PATCH FITTING

Material: Aluminum Alloy and stainless steel cover plates  
Finish: chrome, gilding, sanded. Recommended toughened glass door thickness: 8mm-12mm



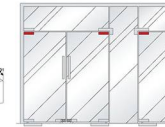
PF-010



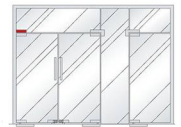
PF-010D



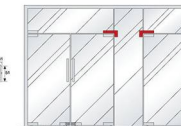
PF-020



PF-030



PF-040



PF-041



PF-042

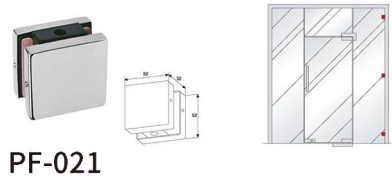


PF-051A

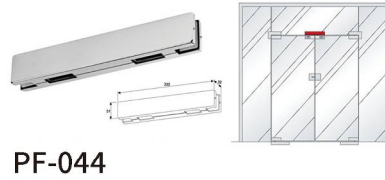


# PATCH FITTING

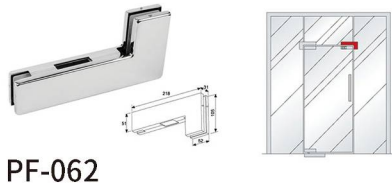
Material: Aluminum Alloy and stainless steel cover plates  
Finsih: chrome, gilding, sanded. Recommended toughened glass door thickness: 8mm-12mm



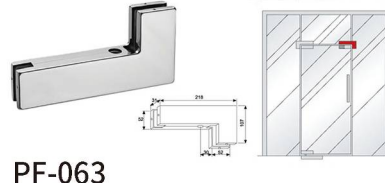
PF-021



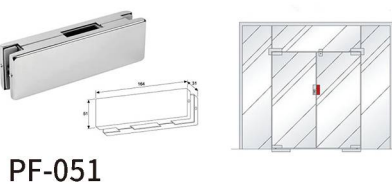
PF-044



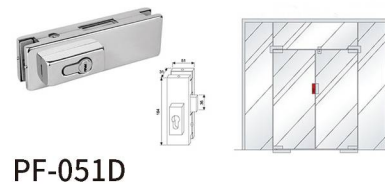
PF-062



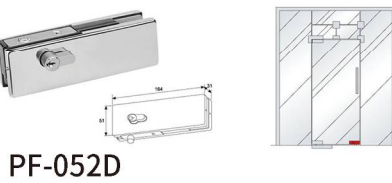
PF-063



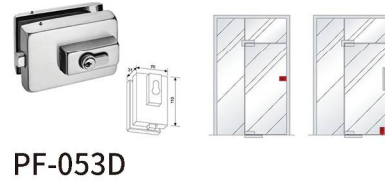
PF-051



PF-051D



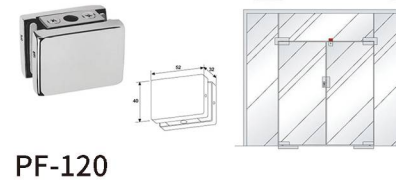
PF-052D



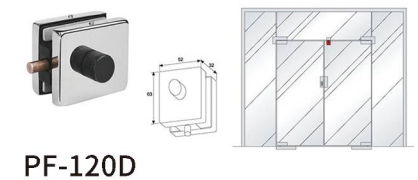
PF-053D

# PATCH FITTING

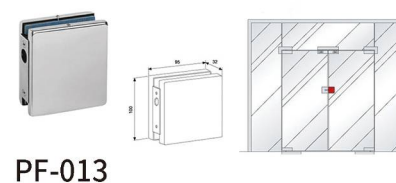
Material: Aluminum Alloy and stainless steel cover plates  
Finsih: chrome, gilding, sanded. Recommended toughened glass door thickness: 8mm-12mm



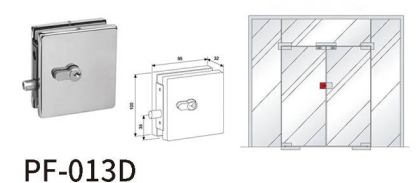
PF-120



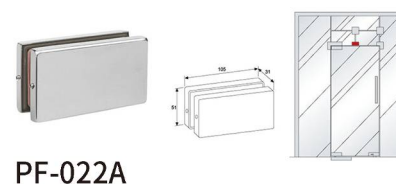
PF-120D



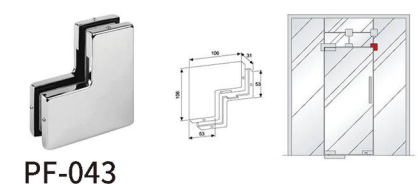
PF-013



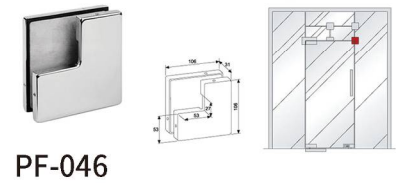
PF-013D



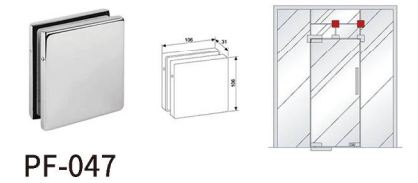
PF-022A



PF-043



PF-046

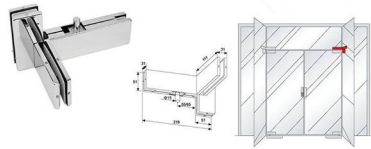


PF-047

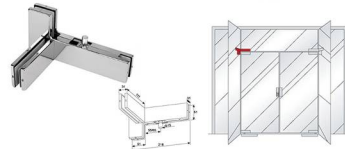


# PATCH FITTING

Material: Aluminum Alloy and stainless steel cover plates  
Finsih: chrome, gilding, sanded. Recommended toughened glass door thickness: 8mm-12mm



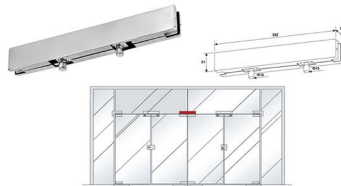
PF-480R



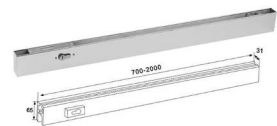
PF-480L



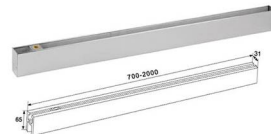
PF-490T



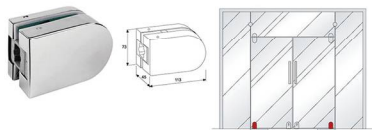
PF-045



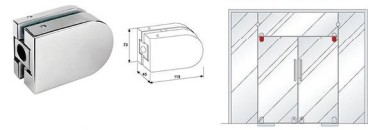
PF-L1001



PF-L1002



PF-R010



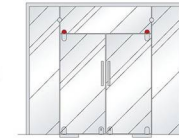
PF-R020

# PATCH FITTING

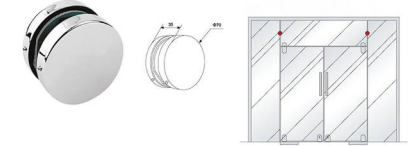
Material: Aluminum Alloy and stainless steel cover plates  
Finsih: chrome, gilding, sanded. Recommended toughened glass door thickness: 8mm-12mm



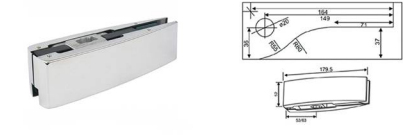
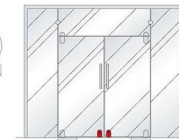
PF-R030



PF-R040



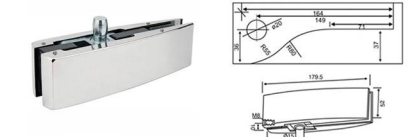
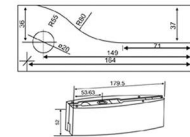
PF-R051D



MPF-010



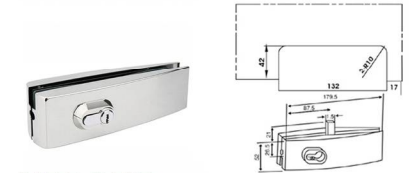
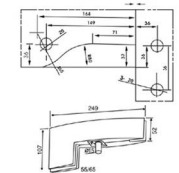
MPF-020



MPF-030



MPF-040



MPF-010D



**PF-ES001**  
Material: Stainless Steel



**PF-ES002**  
Material: Stainless Steel



**PF-ES003**  
Material: Stainless Steel



**PF-ES010**  
Material: Stainless Steel



**PF-ES004**  
Material: Stainless Steel



**PF-ES041**  
Material: Stainless Steel



**PF-ES020**  
Material: Stainless Steel



**PF-ES042**  
Material: Stainless Steel



**PF-ES040**  
Material: Stainless Steel

# HYDRAULIC PATCH FITTING

COVER MATERIAL : STAINLESS STEEL 304 COVER  
 BASE MATERIAL : SOLID STAINLESS STEEL 304 BASE  
 GLASS THICKNESS: 8-12MM GLASS  
 MAX DOOR WEIGHT: 80KGS / 90KGS / 100KGS  
 KINDS OF GASKETS : PE, PVC, ASBESTOS, NON ASBESTOS, BLACK PVC  
 ONE OIL CIRCUIT SET IN THE BODY, WITH 2 SPEED  
 FOR ADJUSTING THE SPEED,  
 NUMBER 1 FOR 90 TO 15 DEGREE , AND NUMBER 2 FOR 15 TO 0 DEGREE,  
 WHICH IS IN CHARGE OF CONTROL  
 THE WHOLE OIL CIRCUIT. THE DOOR CAN BE FIXED AT 90 OR 92 DEGREE.



**PF-010H1**



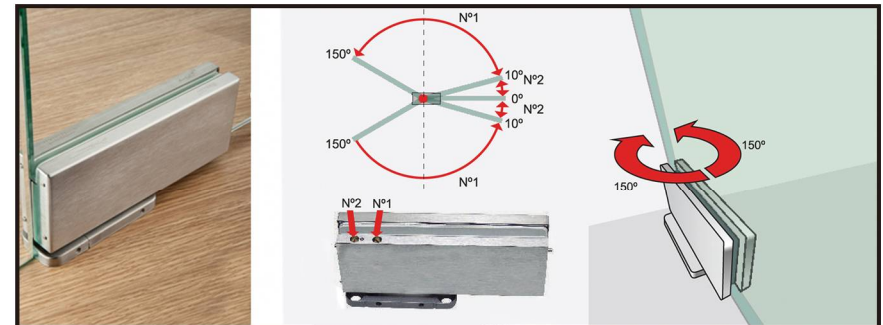
**PF-020B1**



**PF-010H2**



**PF-020B2**



《《《 FLOOR SPRING



**FLS-28**  
Dorma head  
Size: 270\*130\*50mm  
Degree: 90 Degrees Positioning  
Max door weight: 90kg



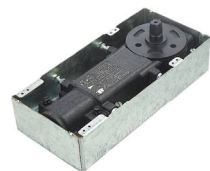
**FLS-65**  
MAB head  
Size: 28.3\*13\*6.5cm  
Degree: 90 Degrees Positioning  
Max door weight: 100kg



**FLS-68**  
Dorma head  
Size: 10.8\*27.5\*4cm  
Degree: 90 Degree positioning,  
Max open 130 degree  
Max door weight: 120kg



**FLS-90**  
MAB head  
Size: 295\*150\*70mm  
Degree: 180 Degrees positioning  
Max door weight: 120kg



**FLS-25**  
Speedy head  
Size: 28.3\*13\*6.5cm  
Degrees: 90 Degrees Positioning  
Max door weight: 90kg



**FLS-75**  
Dorma head  
Size: 28.5\*8.25\*5cm  
Degree: 180 Degrees, 360Degrees  
Max door weight: 150kg



**FLS-68V**  
Dorma head  
Size: 10.8\*27.5\*4cm  
Degree: 90 Degree positioning,  
Max open 130 degree  
Max door weight: 120kg



**V503D & V503E**  
Material: Stainless steel 304  
Stainless steel 316

《《《 DOOR LOCK



**DL-017A**  
Material: Zinc Alloy  
Finish: Chrome, Gold, Sanded, Mirror  
Glass door thickness: 10mm-12mm  
Type: Double door and double lock.



**DL-018B**  
Material: Zinc Alloy/Stainless Steel  
Finish: Chrome, Gold, Sanded, Mirror  
Glass door thickness: 10mm-12mm  
Type: Single door with knob.



**DL-071A**  
Material: Zinc Alloy/Steel/Iron  
Finish: Chrome, Gold, Sanded, Mirror  
Glass door thickness: 10mm-12mm  
Type: Double door with knob.



**DL-071A**  
Material: Stainless Steel  
Finish: Mirror, Sanded  
Glass door thickness: 10mm-12mm



**LH-101D**  
Material: Zinc Alloy/Stainless Steel  
Finish: Chrome, Sanded, Mirror  
Glass door thickness: 10mm-12mm



**DL-017B**  
Material: Zinc Alloy/Stainless Steel  
Finish: Chrome, Gold, Sanded, Mirror  
Glass door thickness: 10mm-12mm  
Type: Single door and double lock.



**DL-070A**  
Material: Zinc Alloy/Steel/Iron  
Finish: Chrome, Gold, Sanded, Mirror  
Glass door thickness: 10mm-12mm  
Type: Double door and double lock.



**DL-071B**  
Material: Zinc Alloy/Steel/Iron  
Finish: Chrome, Gold, Sanded, Mirror  
Glass door thickness: 10mm-12mm  
Type: Single door with knob.



**DL-093**  
Material: Zinc Alloy  
Finish: Chrome  
Glass door thickness: 10mm-12mm



**LH-102D**  
Material: Zinc Alloy  
Finish: Chrome  
Glass door thickness: 10mm-12mm



**DL-018A**  
Material: Zinc Alloy/Stainless Steel  
Finish: Chrome, Gold, Sanded, Mirror  
Glass door thickness: 10mm-12mm  
Type: Single door with knob.



**DL-070B**  
Material: Zinc Alloy/Steel/Iron  
Finish: Chrome, Gold, Sanded, Mirror  
Glass door thickness: 10mm-12mm  
Type: Single door and double lock.



**DL-022B**  
Material: Stainless Steel  
Finish: Sanded, Mirror, Red bronze  
Glass door thickness: 10mm-12mm



**LH-100D**  
Material: Zinc Alloy/Stainless Steel  
Finish: Chrome, Sanded, Mirror  
Glass door thickness: 10mm-12mm



**LH-105**  
Material: Stainless Steel  
Finish: Sanded, Mirror  
Glass door thickness: 10mm-12mm



《《《《 DOOR CLOSER



**DC-051**  
Loading Weight:25-45KG  
Door Size:500-800MM



**DC-061B**  
Loading Weight:45-60KG  
Door Size:600-900MM



**DC-061A**  
Loading Weight:45-60KG  
Door Size:600-900MM



**DC-071B**  
Loading Weight:60-80KG  
Door Size:600-1000MM



**DC-071A**  
Loading Weight:60-80KG  
Door Size:600-1000MM



**DC-82**  
Loading Weight:80-120KG  
Door Size:<1100MM



**DC-063**  
Loading Weight:40-60KG  
Door Size:<900MM



**DC-061A**  
Loading Weight:45-60KG  
Door Size:600-900MM

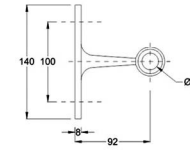


**DC-061A**  
Loading Weight:45-60KG  
Door Size:600-900MM

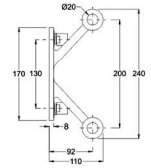
《《《《 SPIDER FITTING



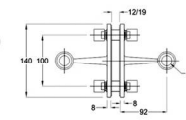
**FK200-45A**



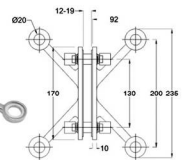
**FK200-45**



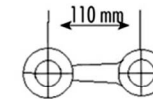
**FK200-45AB**



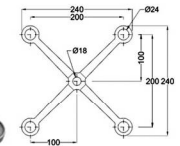
**FK200-4**



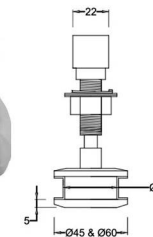
**F220-1S**



**F200-4**



**PT-2**



**CN-001**



Model	Diameter	Total Height	Load Capacity	Model	Diameter	Total Height	Load Capacity
MN001-1	12mm	22mm	40kg	MN001-17	19mm	33mm	40kg
MN001-2	12mm	25mm	40kg	MN001-18	19mm	40mm	40kg
MN001-3	12mm	30mm	40kg	MN001-19	19mm	50mm	40kg
MN001-4	12mm	40mm	40kg	MN001-20	19mm	60mm	30kg
MN001-5	12mm	50mm	40kg	MN001-21	19mm	70mm	30kg
MN001-6	12mm	60mm	30kg	MN001-22	19mm	80mm	30kg
MN001-7	12mm	70mm	30kg	MN001-23	19mm	100mm	30kg
MN001-8	12mm	80mm	40kg	MN001-24	19mm	120mm	30kg
MN001-9	16mm	25mm	40kg	MN001-25	25mm	30mm	40kg
MN001-10	16mm	30mm	40kg	MN001-26	25mm	40mm	40kg
MN001-11	16mm	40mm	40kg	MN001-27	25mm	50mm	40kg
MN001-12	16mm	50mm	40kg	MN001-28	25mm	60mm	30kg
MN001-13	16mm	60mm	30kg	MN001-29	25mm	70mm	30kg
MN001-14	16mm	70mm	30kg	MN001-30	25mm	80mm	30kg
MN001-15	16mm	80mm	30kg	MN001-31	25mm	100mm	30kg
MN001-16	16mm	100mm	30kg	MN001-32	25mm	120mm	30kg

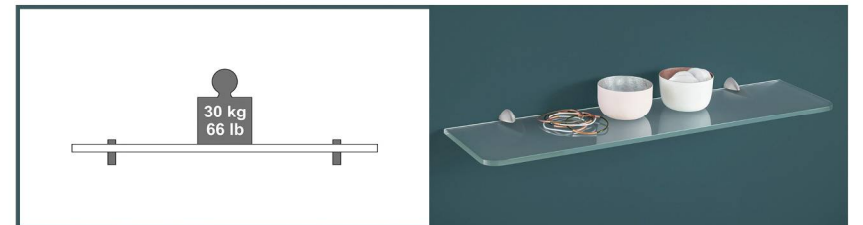


MN001

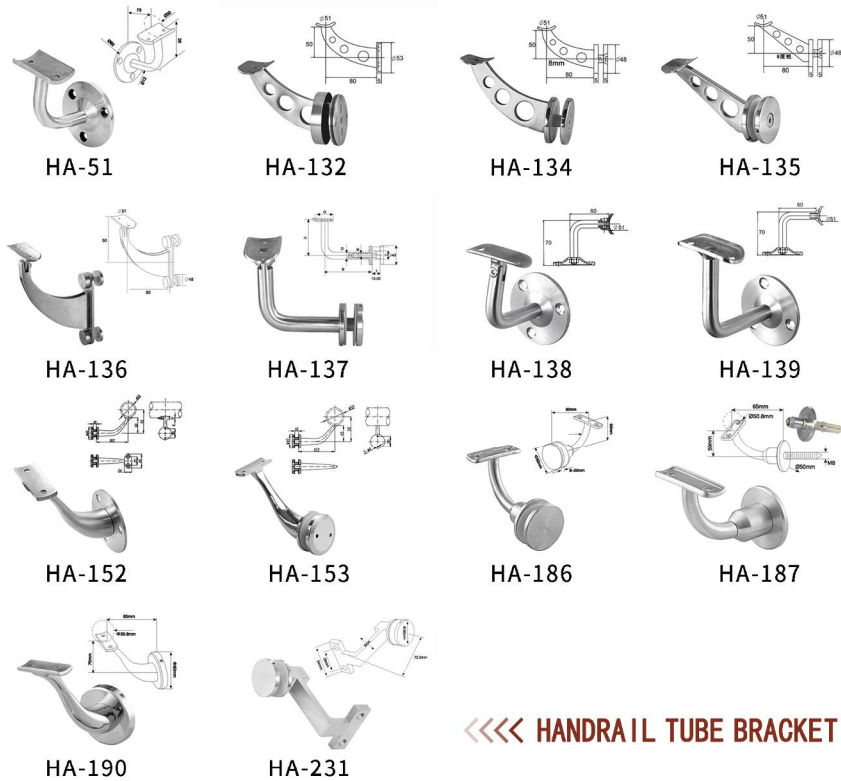
**PRODUCT OVERVIEW**

- MIRROR STANDOFFS CAN BE USED WITH MIRROR AND GLASS PANEL.
- EACH STANDOFF CONSISTS OF A BASE AND CAP
  - REGARDLESS OF BASE HEIGHT, HOLES MUST BE DRILLED IN THE GLASS FOR ASSEMBLY
  - AVAILABLE IN MANY FINISHES
  - SUITABLE FOR INTERIOR USE
  - CONTACT OUR PROJECT MANAGEMENT TEAM FOR HELP WITH PROJECT-SPECIFIC REQUIREMENTS

**OFFICE GLASS FITTING**



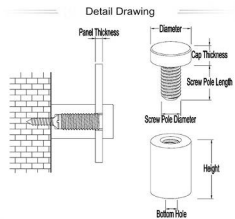
**SHELF BRACKET**



《《《 HANDRAIL TUBE BRACKET



HA-36



**IMPORTANT INFORMATION**  
Ideal for signage, displays, railing, presentation and desk tops For safety purposes, use tempered glass.  
The use of power tools during installation may damage the hinges and decorative hardware.  
Always set the product in a suitable material.  
Never exceed the load or maximum size recommended by the manufacturer. Contact our project management team for help with project-specific requirements



《《《 SOLID METAL STANDOFF

《《《 REGULAR PRODUCTS FINISH



1 Chrome



2 Brushed Nickel



3 Antique Brass



4 Antique Copper



5 Oil Rubbed Bronze



6 Matte Black



7 Gold Plated



8 Polished Brass



9 Satin Chrome