

### Brief Introduction



Established in 1990, Zhejiang Leili Auto Parts Co., Ltd. is specialized in manufacturing auto parts. It is a modern corporation integrated with technology, exploration, manufacture and sales. It has strong technical department. Based on innovation in science and technology as well as scientific management, it has obtained its ISO9001-2000 Quality System Certification & ISO/TS16949 Quality Management System Certification. And obtained the honorary title named "Excellent Supplier" awarded by many famous buses & trucks manufacturer.

**MAIN PRODUCTS:**

- Windshield Wiper Series: wiper motor, wiper blade, wiper arm, wiper linkage, wiperhead washer
- Door Lock Series for buses
- Luggage Storeroom Lock Series for buses
- Digital Electronic Clock for buses

**WE ARE OEM FOR MANY FAMOUS BUSES & TRUCKS MANUFACTURERS AS BELOW IN CHINA,**

- Yangtze Benz Company
  - Yangtze Young Motor Coach Co., Ltd.
  - Xiamen Golden Dragon Bus Co., Ltd.
  - Changchun Hweifang Bus Factory
  - DFAC, Dongfeng Bus Co., Ltd.
  - Zonda Group Bus Manufacture Co., Ltd.
  - Chongqing Heavy Vehicle Group Co., Ltd.
  - Shandong Nujun Automobile Co., Ltd.
- Our products also sell well in Oceania, South Africa, Middle East and Southeast Asia.

Leili advocated "Customer is First" and "Human Oriented" to build international brand. We will strive hard to give experience and innovation to serve our customers and help the partners all over the world to cooperate with us and build a brilliant future together.

浙江雷力汽车零部件有限公司，创建于1990年，是一家集技术、开发、生产、销售于一体的现代化汽车零部件企业。公司技术力量雄厚，注重科技创新，科学管理，已通过ISO9001-2000国际质量管理体系认证和ISO/TS16949汽车行业质量管理体系标准认证，多次荣获国内知名主机厂“优秀供应商”称号。

- 公司主营产品：**
- 汽车雨刮器系列雨刮电机、雨刮片、雨刮臂、雨刮架、雨刮连杆、雨刮头盖
  - 门锁总成、洗涤器
  - 客车门锁系列
  - 客车行李架系列
  - 数字电子钟系列

- 雷力公司在国内是OEM生产商，产品长期为多家主机厂配套。**
- 雷星、奔驰、福田康明斯
  - 厦门金龙
  - 重庆康明斯
  - 东风客车
  - 中大集团
  - 重庆北汽
  - 四川南骏
- 雷力产品远销欧美、南非、中东及东南亚等国家。

雷力一贯秉承“以人为本”的管理理念，构建“以客户为中心”的完善服务体系，雷力打造“雷力”世界品牌，竭诚欢迎海内外同仁，莅临雷力，真诚合作，携手并进，共创辉煌。



### Our Equipments 我们的设备



Each employee in LEILI always has precise working attitude. They regard the product quality as life and never accept one piece of unqualified product. Standing on customer benefit they know 0.1% defect means 100% repeat. The quality consciousness and responsibility, which guarantee the reliable quality of products in LEILI, have been planted deeply into employee's heart.

在雷力公司，每一位员工都拥有严谨的工作态度，他们视产品质量为生命，站在用户的角度，深知“0.1%的不合格品，就是100%的不满意”。这种深植于人心的质量意识，是雷力公司品牌的可靠保证。



### Quality Guideline

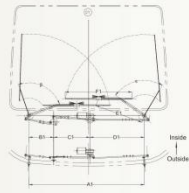
- 质量为本  
Outstanding Quality
- 持续改进  
Continuous Improvement
- 追求卓越  
Aspiring After Excellence
- 精耕品牌  
Brand Building



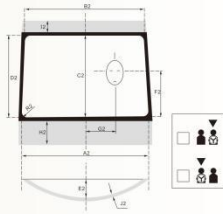
**Bus Wiper Assembly Series 客车刮水器系列**

**Bus Wiper Assembly Series 客车刮水器系列**

Installing Drawing  
安装图



Windshield Model Drawing  
玻璃模型图



**KG-001** 重叠式刮水器总成  
Overlapped Wiper Assembly



适用车型 Application	传动机构中心距 Center Distance of Wiper Linkage	电机型号 Motor Model	刮片规格 Wiper Blade	刮臂规格 Wiper Arm	配置洗涤剂 Washer
大客车 Big bus	1980-1720mm	180w 24v 180w 12v	1000-900mm	850-750mm	3.5L

**KG-002** 重叠式刮水器总成  
Overlapped Wiper Assembly



适用车型 Application	传动机构中心距 Center Distance of Wiper Linkage	电机型号 Motor Model	刮片规格 Wiper Blade	刮臂规格 Wiper Arm	配置洗涤剂 Washer
大客车 Big bus	1980-1640mm	150w 24v 150w 12v	1000-800mm	780-700mm	3.5L

**KG-003** 重叠式刮水器总成  
Overlapped Wiper Assembly



适用车型 Application	传动机构中心距 Center Distance of Wiper Linkage	电机型号 Motor Model	刮片规格 Wiper Blade	刮臂规格 Wiper Arm	配置洗涤剂 Washer
大客车 Big bus	1980-1720mm	180w 24v 180w 12v	1000-900mm	850-750mm	3.5L

**Bus Wiper Assembly Series 客车刮水器系列**

**Bus Wiper Assembly Series 客车刮水器系列**

**KG-004** 重叠式刮水器总成  
Overlapped Wiper Assembly



适用车型 Application	传动机构中心距 Center Distance of Wiper Linkage	电机型号 Motor Model	刮片规格 Wiper Blade	刮臂规格 Wiper Arm	配置洗涤剂 Washer
大客车 Big bus	1980-1640mm	150w 24v 150w 12v	1000-800mm	780-700mm	2L

**KG-005** 重叠式刮水器总成  
Overlapped Wiper Assembly



适用车型 Application	传动机构中心距 Center Distance of Wiper Linkage	电机型号 Motor Model	刮片规格 Wiper Blade	刮臂规格 Wiper Arm	配置洗涤剂 Washer
大客车 Big bus	1720-1420mm	130w 24v 130w 12v	800-700mm	750-430mm	2L

**KG-006** 直立刮水器总成  
Vertical Wiper Assembly



适用车型 Application	传动机构中心距 Center Distance of Wiper Linkage	电机型号 Motor Model	刮片规格 Wiper Blade	刮臂规格 Wiper Arm	配置洗涤剂 Washer
大客车 Big bus	1450-1020mm	120w 24v 120w 12v	800-700mm	800-650mm	2L

**KG-007** 顺序刮水器总成  
Ordered Wiper Assembly



适用车型 Application	传动机构中心距 Center Distance of Wiper Linkage	电机型号 Motor Model	刮片规格 Wiper Blade	刮臂规格 Wiper Arm	配置洗涤剂 Washer
大客车 Big bus	810-710mm	80w 24v 80w 12v	700-600mm	700-650mm	1.5L

**Bus Wiper Assembly Series 客车刮水器系列**

**Bus Wiper Motor Series 客车雨刮电机系列**

**KG-008 顺序式刮水器总成**  
Ordered Wiper Assembly

适用车型 Application	传动机构中心距 Center Distance of Wiper Linkage	电机型号 Motor Model
客车Bus	655-655mm	80-120W 24V 80-120W 12V
刮片规格 Wiper Blade	刮臂规格 Wiper Arm	配套清洗剂 Washer
800-600mm	750-630mm	2L



**KG-009 分体直立刮水器总成**  
Single Vertical Wiper Assembly

适用车型 Application	传动机构中心距 Wiper Linkage	电机型号 Motor Model
客车Bus	单立式	60-80W 24V 60-80W 12V
刮片规格 Wiper Blade	刮臂规格 Wiper Arm	配套清洗剂 Washer
800-650mm	800-600mm	2L



**KG-010 直立刮水器总成**  
Vertical Wiper Assembly

适用车型 Application	传动机构中心距 Center Distance of Wiper Linkage	电机型号 Motor Model
大客车Big Bus	1300-1100mm	150W 24V 150W 12V
刮片规格 Wiper Blade	刮臂规格 Wiper Arm	配套清洗剂 Washer
900-700mm	900-700mm	3.5L



ZD 2735 180W 24V  
ZD 1735 180W 12V



ZD 2733 150W 24V  
ZD 1733 150W 12V



ZD 2732 130W 24V  
ZD 1732 130W 12V



ZD 2730 120W 24V  
ZD 1730 120W 12V



ZD 2633 80W 24V  
ZD 1633 80W 12V



ZD 2632 80W 24V  
ZD 1632 80W 12V

注: 正负电控制为标配  
Note: Controlled by anode or cathode

**Wiper Motor Series 雨刮电机系列**

**Wiper Motor Series 雨刮电机系列**



ZD 2637 70W 24V  
ZD 1637 70W 12V



ZD 2635 70W 24V  
ZD 1635 70W 12V



ZD 1530FB 50W 12V  
ZD 2530FB 50W 24V



ZD 2532 50W 24V  
ZD 1532 50W 12V



ZD 2631L 50W 24V  
ZD 1631L 50W 12V



ZD 2631R 50W 24V  
ZD 1631R 50W 12V



ZD 2533 50W 24V  
ZD 1533 50W 12V



ZD 2535 50W 24V  
ZD 1535 50W 12V



ZD 2630 60W 24V  
ZD 1630 60W 12V



ZD 2531 50W 24V  
ZD 1531 50W 12V



ZD 2331 30W 24V  
ZD 1331 30W 12V



ZD 2332 30W 24V  
ZD 1332 30W 12V



ZD 2530L 50W 24V  
ZD 1530L 50W 12V



ZD 2530R 50W 24V  
ZD 1530R 50W 12V



ZD 2230 20W 24V  
ZD 1230 20W 12V



ZD 2537 L 50W 24V  
ZD 1537 L 50W 12V



ZJB 2633 80W 24V  
ZJB 1633 80W 12V



ZJA 2733 150W 24V  
ZJA 1733 150W 12V

**Special Motor Series 专用电机系列**



ZY-001  
150W 24V  
150W 12V



ZY-002  
100W 24V  
100W 12V



ZY-003  
80W 24V  
80W 12V



ZY-004  
70W 24V  
70W 12V



ZY-005  
70W 24V  
70W 12V



ZY-006  
30W 24V  
30W 12V



ZY-007  
30W 24V  
30W 12V



ZY-008  
30W 24V  
30W 12V

**Bus Washer Series 客车洗涤器系列**



**Nozzle Series 喷水嘴系列**



**Wiper Linkage Series 雨刮连杆杆系列**

**Wiper Linkage Series 雨刮连杆杆系列**



注: 连杆杆尺寸可根据用户需求设计  
Note: The length can be designed as per customer's demand

注: 连杆杆尺寸可根据用户需求设计  
Note: The length can be designed as per customer's demand

**Wiper Blade Series 雨刮片系列**

**Wiper Blade Series 雨刮片系列**



**Car wiper series**



**Wiper Arm Series 雨刮臂系列**

**Bus Lock Series 客车锁具系列**



Bus Lock Series 客车锁具系列

Bus Lock Series 客车锁具系列



LL-181A 行李仓锁  
LL-181A Luggage Storehouse Lock



LL-181B 行李仓锁  
LL-181B Luggage Storehouse Lock



LL-136 外推门锁  
LL-136 Outside Swing Door Lock



LL-136A 外推门锁  
LL-136A Outside Swing Door Lock



LL-182 行李仓锁  
LL-182 Luggage Storehouse Lock



LL-168 行李仓锁  
LL-168 Luggage Storehouse Lock



LL-134 外推门锁  
LL-134 Outside Swing Door Lock



LL-134A 外推门锁  
LL-134A Outside Swing Door Lock



LL-168A 行李仓锁  
LL-168A Luggage Storehouse Lock



LL-168B 行李仓锁  
LL-168B Luggage Storehouse Lock



LL-134B 外推门锁  
LL-134B Outside Swing Door Lock



LL-165 余物箱锁  
LL-165 Sunshies Tank Lock

Bus Lock Series 客车锁具系列

Bus Lock Series 客车锁具系列



LL-K94 考斯特前门锁  
LL-K94 Coaster Front Door Lock



LL-A125 考斯特中门锁  
LL-A125 Coaster Middle Door Lock



LL-159A(L, H) 仓门锁  
LL-159A(Long, short) Storehouse Door Lock



LL-163A 仓门锁  
LL-163A Storehouse Door Lock



LL-163B 仓门锁  
LL-163B Storehouse Door Lock



LL-CT157 考斯特后门锁  
LL-CT157 Coaster Rear Door Lock



LL-157E 考斯特后门锁  
LL-157E Coaster Rear Door Lock



LL-125 外推门锁芯  
LL-125 Outside Swing Door Lock



LL-125 内推门锁芯  
LL-125 Inside Swing Door Lock



LL-161 162 164 油箱锁芯  
LL-161 162 164 Fuel Tank Lock



LL-188A 通用锁  
LL-188A Current Lock



LL-188C 通用锁  
LL-188C Current Lock



LL-100 电子锁  
LL-100 Electronic Lock



LL-176 门栓  
LL-176 Door Bolt



LL-166 地板锁  
LL-166 Floor Lock



行李仓通用锁体  
Current Lock Body of Luggage Storehouse



车门锁柱  
Door Lock Pin

车门拉锁  
Door Pull Lock



LL-115 司机门锁  
LL-115 Driver Door Lock



LL-502 拖车门拉锁  
LL-502 Door Pull Lock

**Truck Lock Series 卡车锁具系列**



斯太尔门锁总成  
STYRE Door Lock Assy



解放CA-150P 门锁总成  
JEFANG CA-150P Door Lock Assy



The special technology help and the latest products data is available wherever the clients is.  
无论我们的客户在哪里都能得到专业的技术咨询。  
广泛的产品资料及一流的销售服务。